

Pickleball Expansion Proposal

© 2024

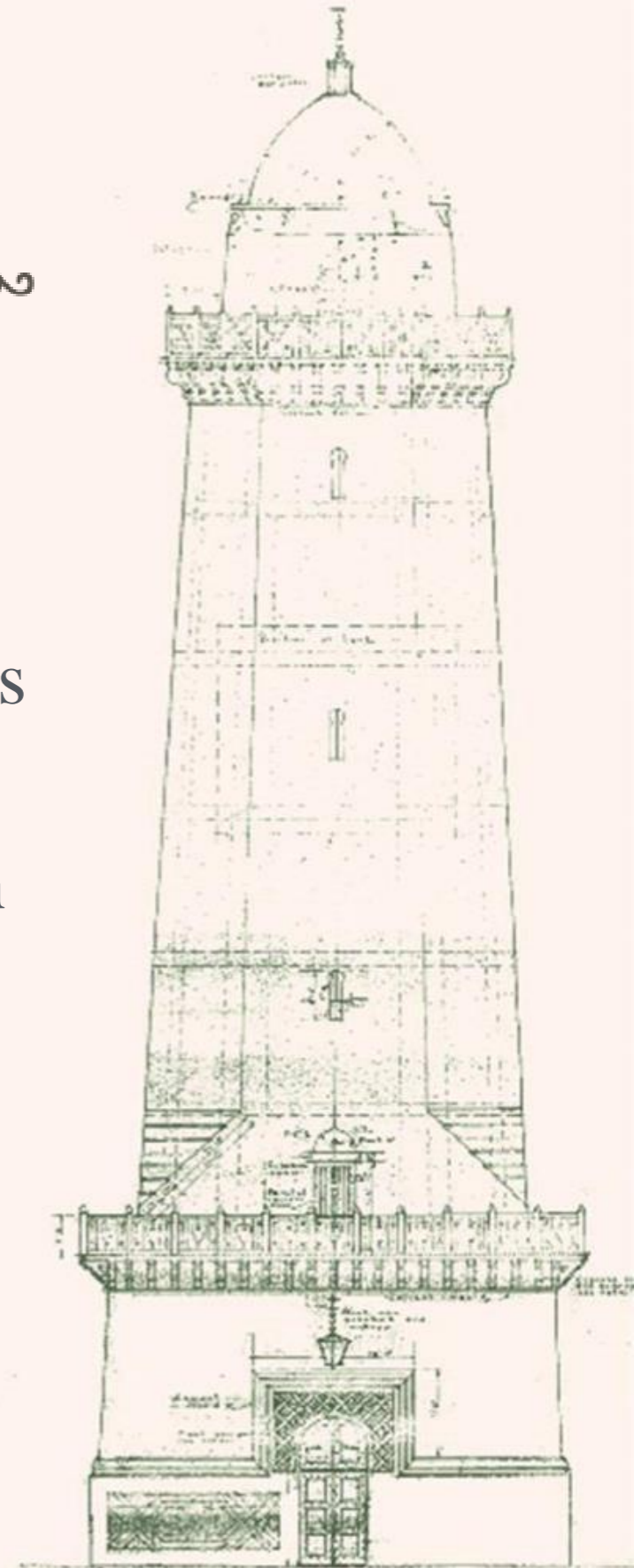
DISCUSSION ON POSSIBLE
PICKLEBALL INSTALLATIONS
SEPTEMBER 27, 2022

**CORAL
GABLES**[®]
THE CITY BEAUTIFUL



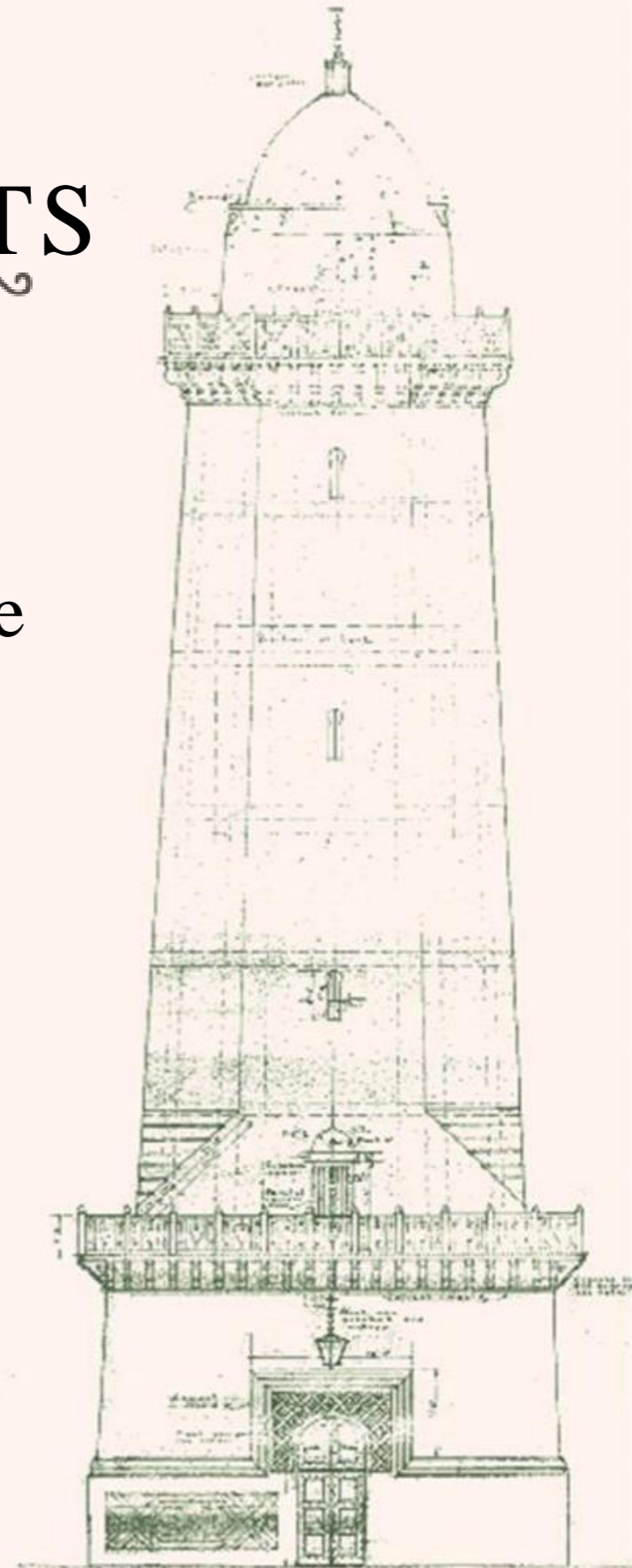
PICKLEBALL COURT REQUIREMENTS

- A regulation pickleball court is 44 feet long and 20 feet wide. In addition to the court, it is recommended that there is use zone of five additional feet on all four sides of the court. This makes the needed space 54 feet by 30 feet.
- Pickleball is played on a hard court surface, with common tennis court surfaces such as Har-Tru being preferable.
- A 36 inch net that is the width of the court (20 feet) is also used.
- Players use hard (usually plastic or other hard material) paddles and perforated plastic ball (similar to a wiffleball).



CURRENT CITY COURTS

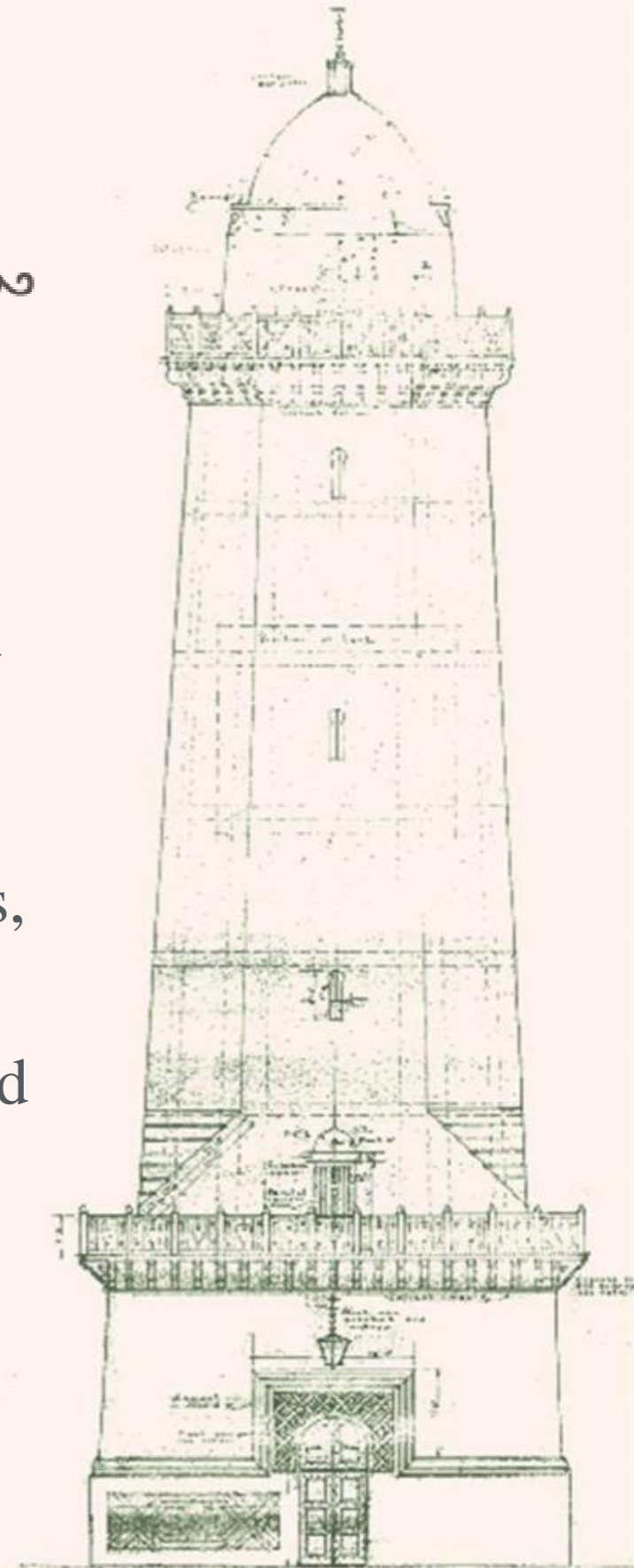
- This City currently has four pickleball courts in different formats and options.
- Salvadore Tennis Center has two courts that have been converted into dedicated pickleball courts.
- Coral Gables Youth Center has two portable courts that have been retro-fit at the Outdoor basketball courts with court lines and portable nets. A third court will be added.
- The Adult Activity Center has one indoor court retrofit in the great room.



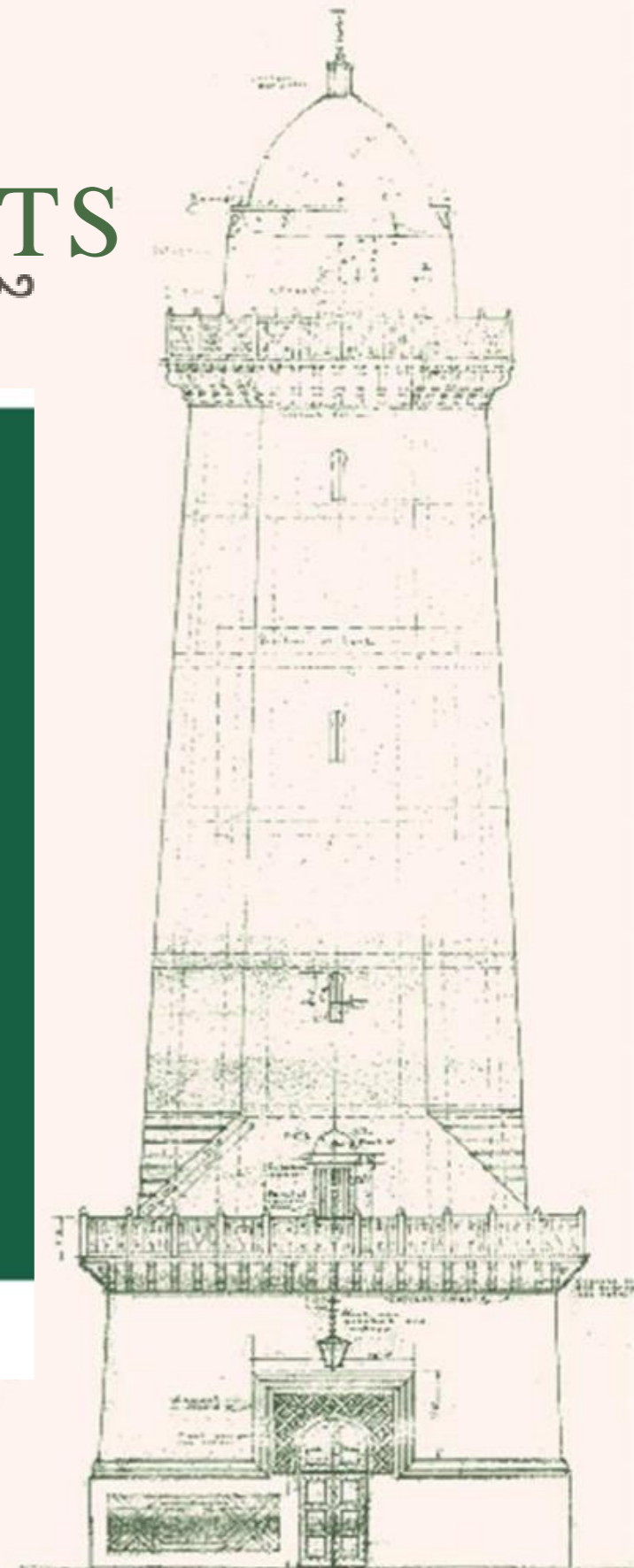
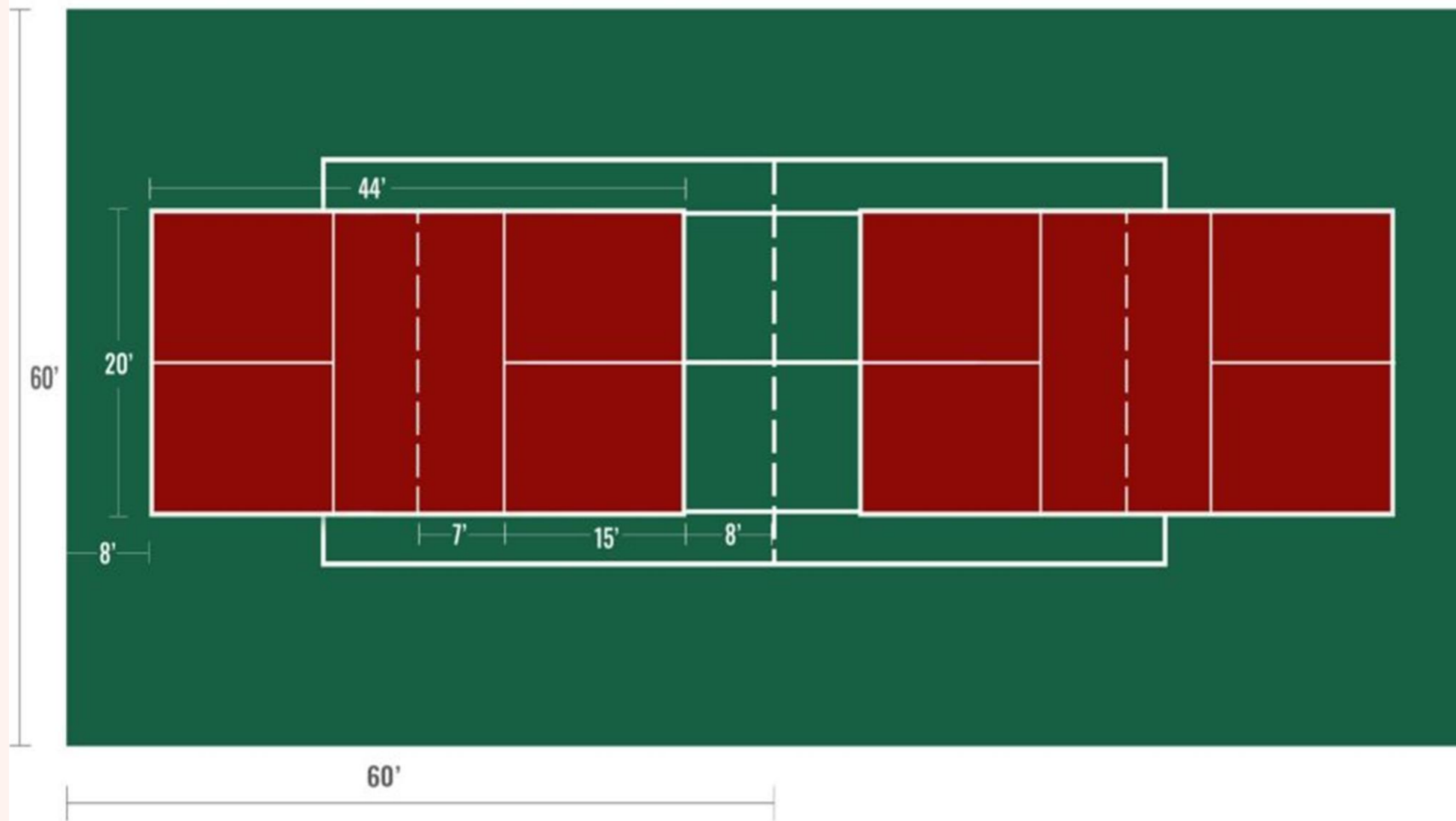
DIFFERENT COURT OPTIONS: RETROFIT



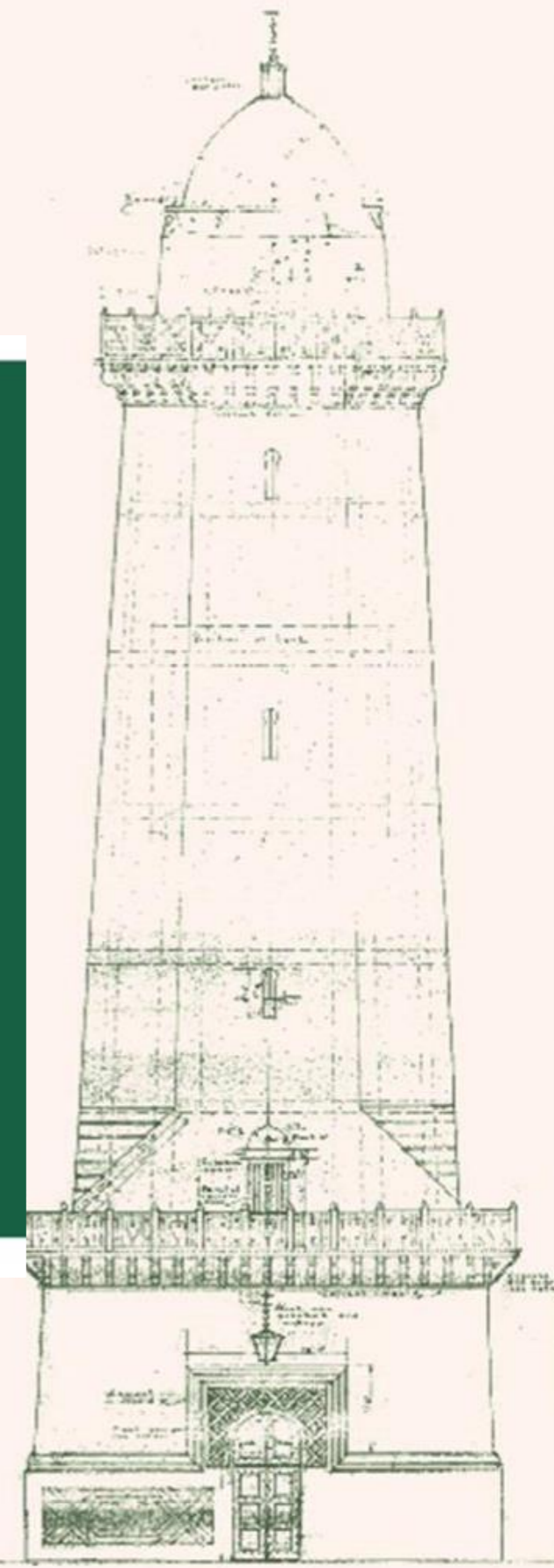
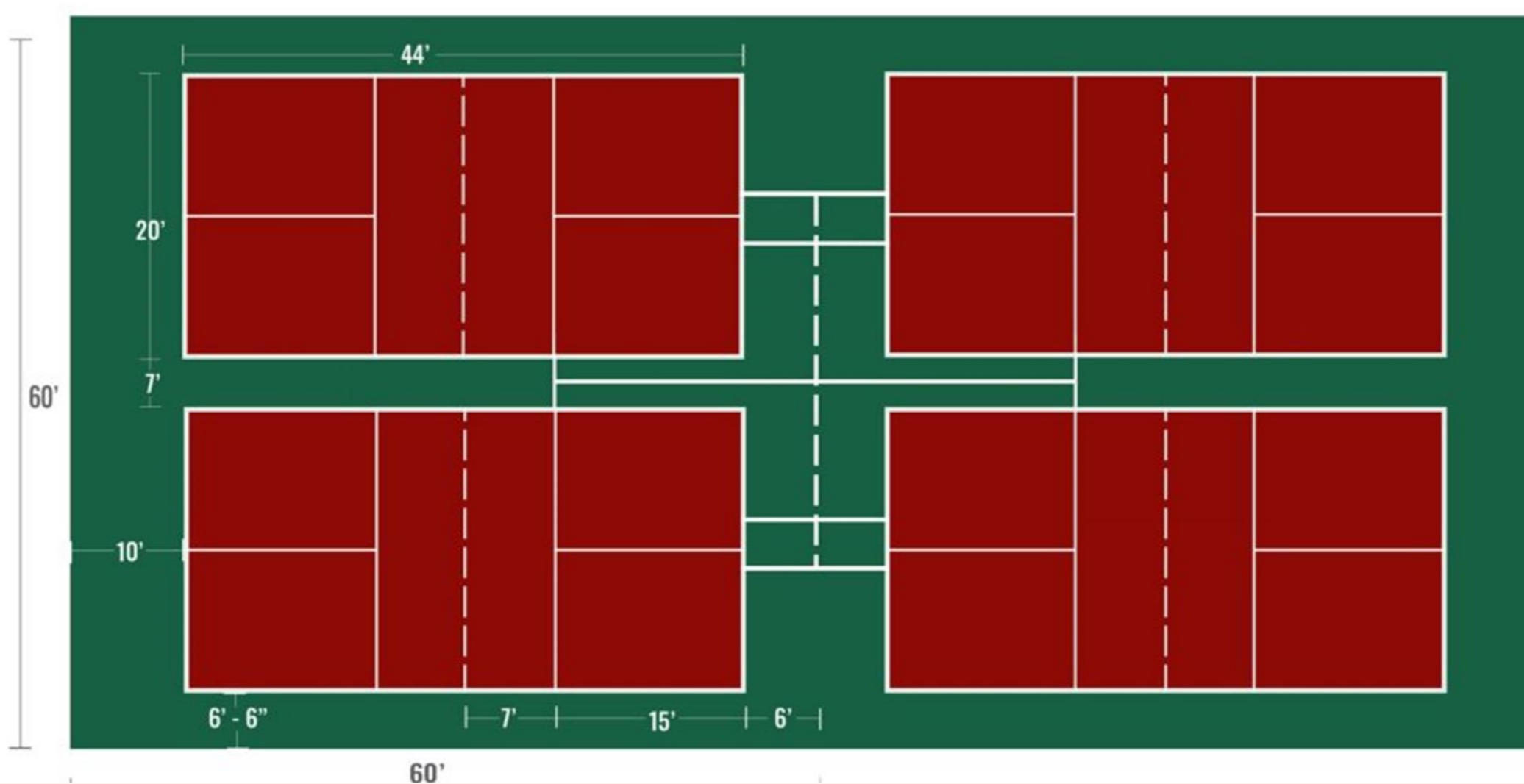
- Pickleball courts can be created through two different methods.
- Retro-fit courts involve utilizing existing hard-court surfaces used for other sports and providing availability for pickleball use within those surfaces. This is usually done through the painting or taping of court lines and the provision of portable/temporary nets. In some cases, this retro-fit can be made permanent.
- Advantage is less cost, utilization of existing spaces, and there is already presence of other needed facilities such as restrooms and lights.
- Disadvantage is court lines can be confusing when integrated into other lines, bordering around each court is usually unavailable, and the possibility of having to share court space with other sports.



COURT MEASUREMENTS

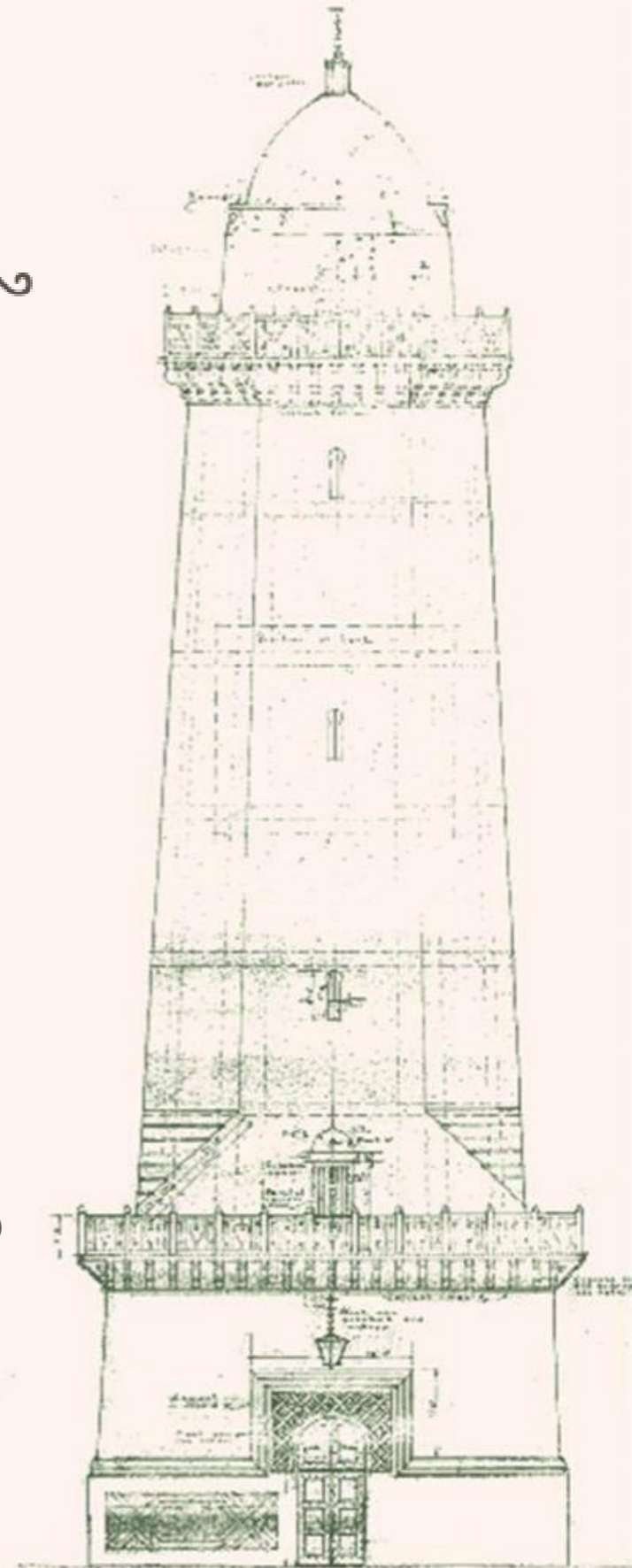


COURT MEASUREMENTS CONTINUED



RETRO-FIT OPTIONS

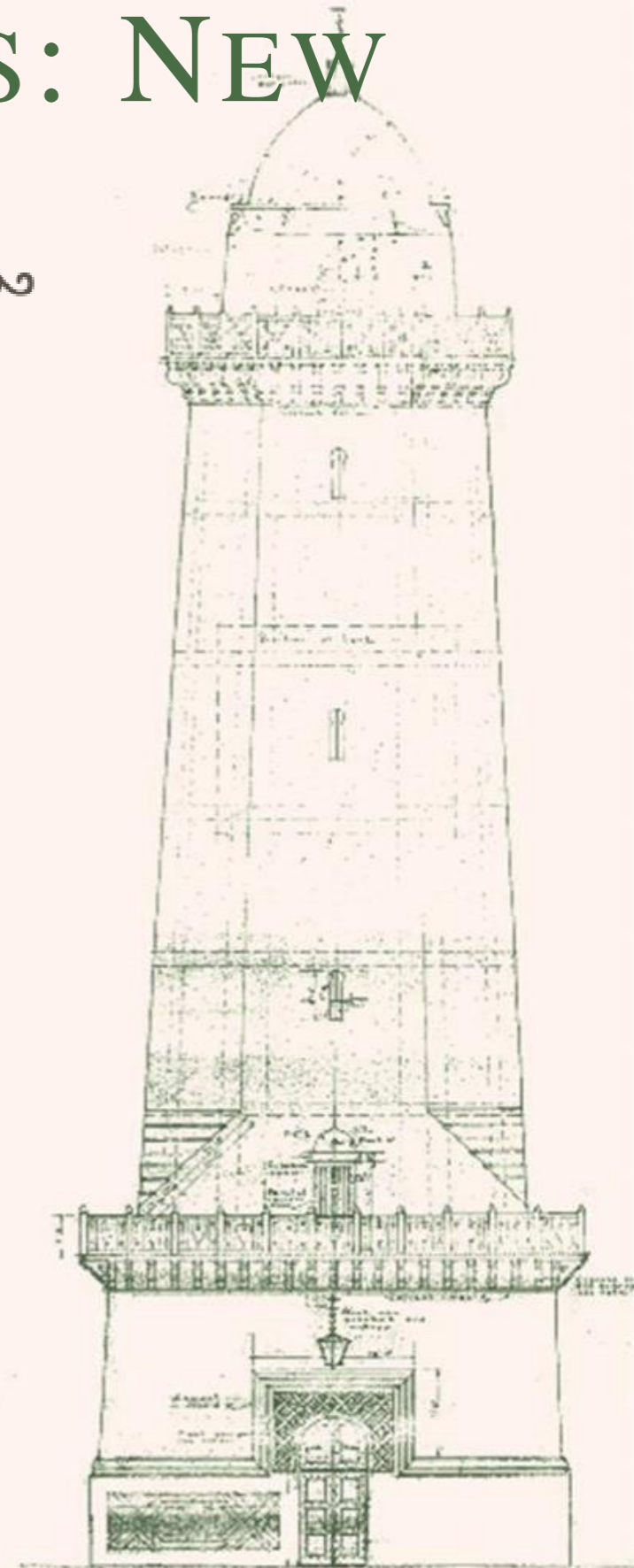
- Additional Courts can be added to provide more pickleball court opportunities.
- The Practice Wall at the Biltmore Tennis Center can be painted to add an additional pickleball court.
- One tennis court at Phillips Park can be painted to add two possible pickleball courts.
- The tennis court at Jaycee Park can be painted to add two possible pickleball courts.



DIFFERENT COURT OPTIONS: NEW CONSTRUCTION



- New Construction would be the building of a dedicated pickleball facility. This would include multiple courts dedicated solely for pickleball. Each court would have the side divisions, proper fencing and permanent netting.
- New construction would also include restrooms and if approved, lighting. If the courts are staffed, an office space and storage space would be needed.
- Advantage is the courts are solely used for pickleball and would be the best play experience.
- Disadvantage is the cost for construction and the land space needed.

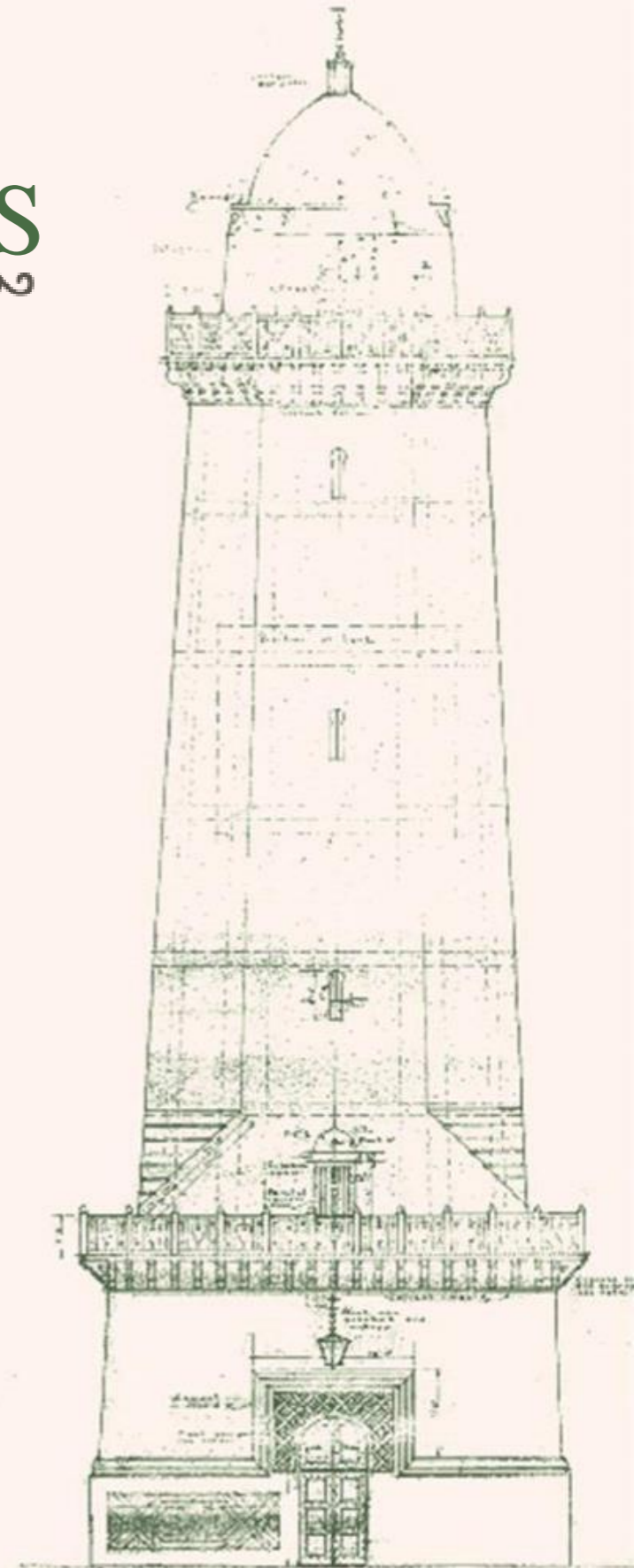


NEW COURT OPTIONS

2

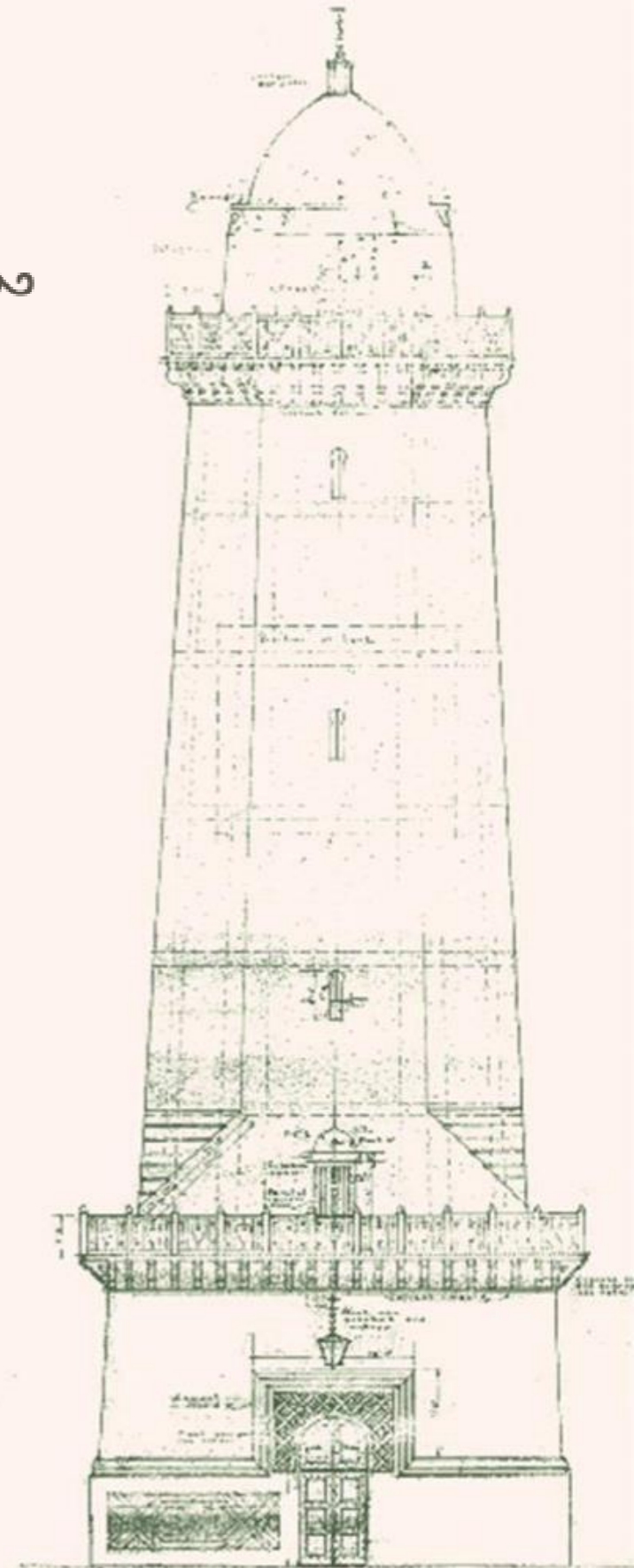
2

- William Kerdyk and Family Park has a large open area that can be used for pickleball courts. There is a 40,000 square feet plus area. A four to the six-court facility can be constructed in the space.
- The renovation of Phillips Park can include two dedicated pickleball courts.
- Two additional courts can be constructed at the Biltmore Tennis Center Practice Wall area.
- The Coral Gables Country Club can have two courts installed to the west of the tennis court facility.



COURT COSTS

- Retro-fit court costs range from \$1,500 to \$3,500 per court dependent on resurfacing and striping.
- New court construction ranges from \$7,500 to \$10,000 per court dependent on resurfacing.
- Additional new court construction costs may include restrooms, office space, storage space, lights, and fencing.



Thank You



CORAL
GABLES
THE CITY BEAUTIFUL