

Alhambra Circle Sidewalk

March 11, 2025

CORAL
GABLES®
THE CITY BEAUTIFUL

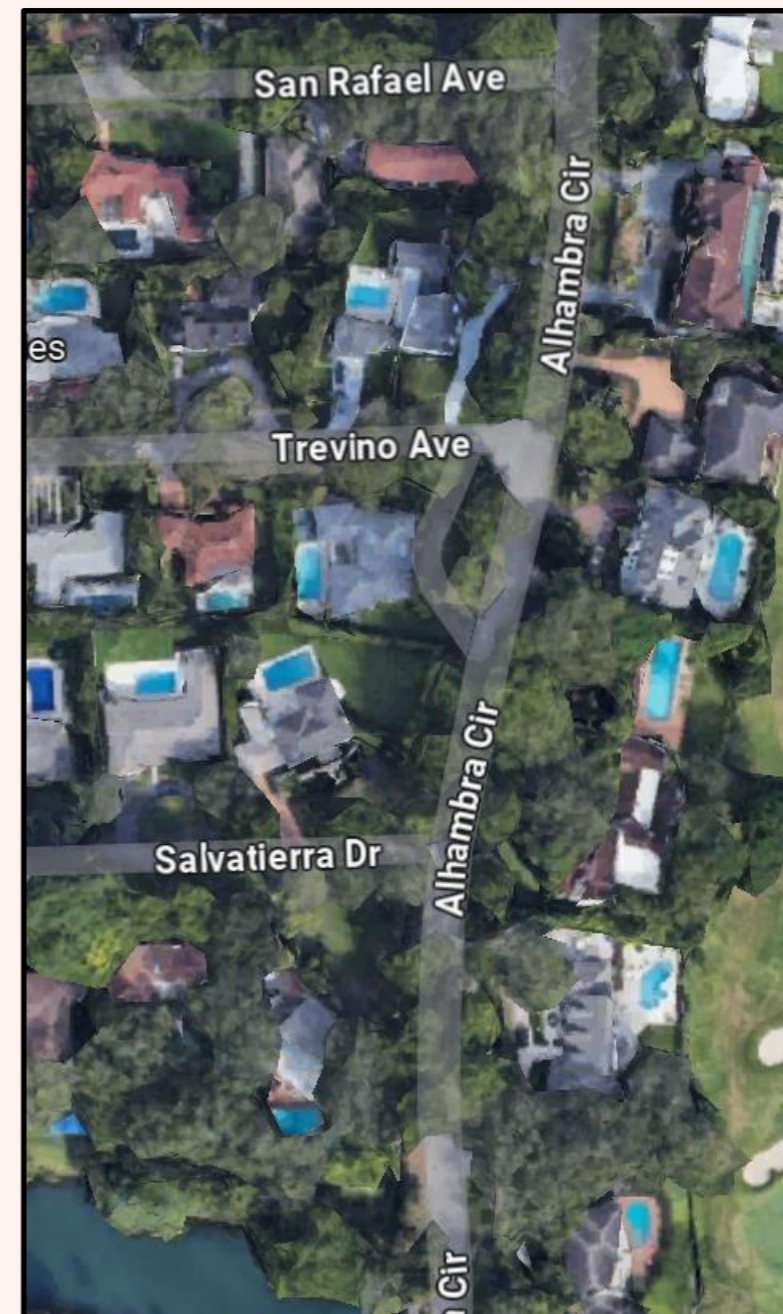


INTRODUCTION

2

2

- ❖ Staff was directed at the October 22, 2024, Commission meeting to present an additional option for the Alhambra Circle sidewalk to shift the road East and provide a 3' minimum buffer between the proposed curb and sidewalk
- ❖ Tree impacts were analyzed based on criteria established in the City Code
- ❖ Based on our analysis, this revised option will increase the number of trees that will be impacted.



CORAL GABLES TREE PROTECTION STANDARDS

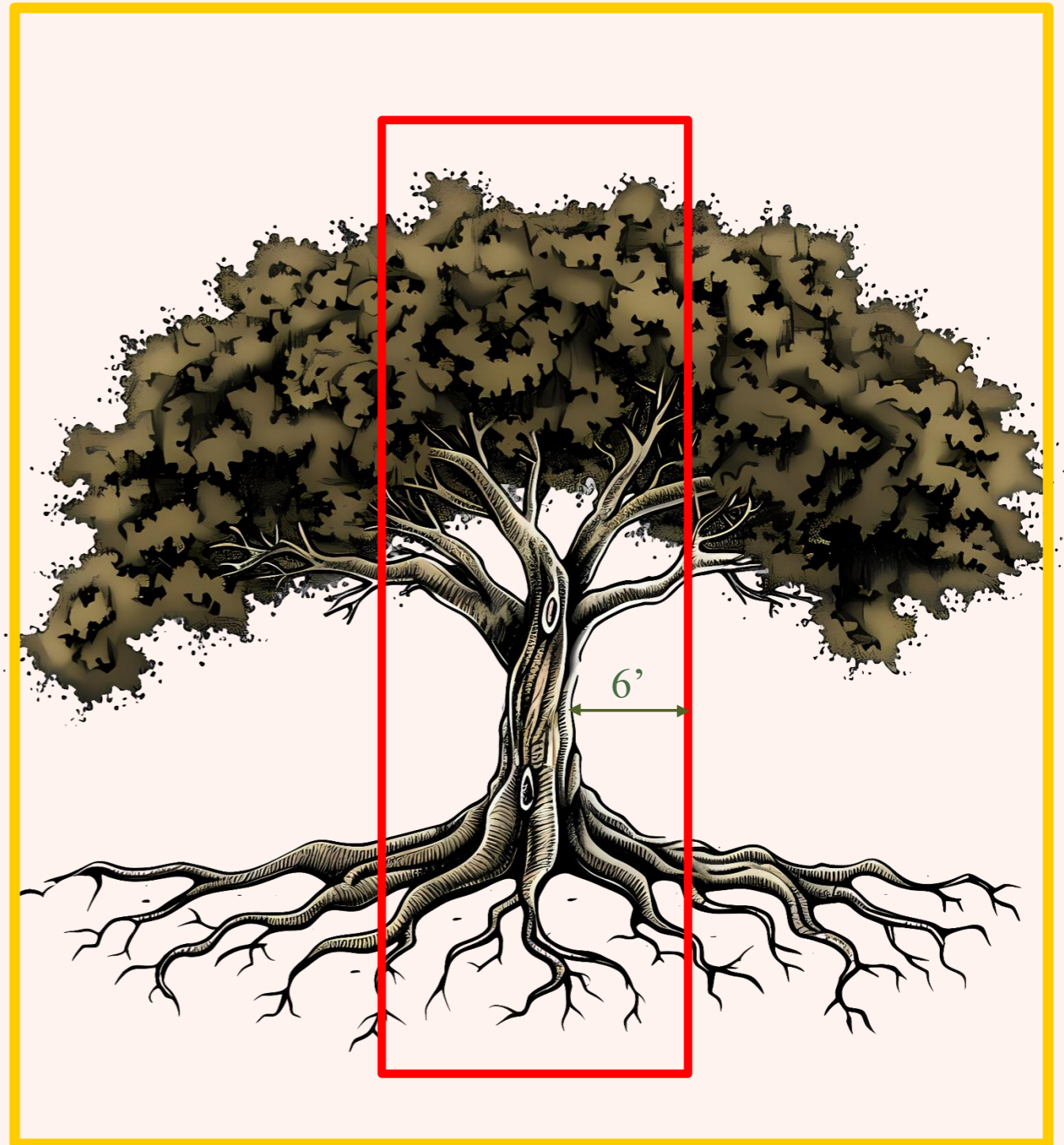


Tree Modification includes :

- Cutting any roots greater than two inches in diameter of a specimen tree within six feet of the trunk
- Cutting more than 25 percent of the roots of a specimen tree within the drip line of the tree to a depth greater than six inches

Tree Protection Zone – minimum of 1 foot away from the trunk for every one inch of trunk radius

- No more than 25 percent of roots in this zone should be cut at one time.



TREE PROTECTION ZONE
(1-INCH FOR EVERY 1-INCH TRUNK RADIUS)

ROOT PROTECTION ZONE (EAST)



TREE NO.	TREE DIAMETER (IN)	TREE RPZ DIAMETER	SIDEWALK IMPACT AREA	PERCENTAGE SIDEWALK IN RPZ	CRITICAL ROOT ZONE IMPACT
19	6	6.50	2.90	9%	N
20	5	5.42	4.04	18%	N
21	32	34.67	370.24	39%	N
22	24	26.00	102.40	19%	Y
23	24	26.00	78.17	15%	N
24	35	37.92	346.40	31%	N
25	30	32.50	246.08	30%	N
26	27	29.25	179.52	27%	N
27	13	14.08	7.43	5%	N
28	8	8.67	2.81	5%	N
29	7	7.58	0.00	0%	N
30	8	8.67	0.00	0%	N
31	24	26.00	165.69	31%	N
32	8	8.67	7.99	14%	N
33	4	4.33	3.62	25%	N
34	24	26.00	120.68	23%	Y
35	18	19.50	18.95	6%	N

**** Percentage calculations based on 6-foot sidewalk**

ROOT PROTECTION ZONE (WEST)



TREE NO.	TREE DIAMETER (IN)	TREE RPZ DIAMETER	SIDEWALK IMPACT AREA	PERCENTAGE SIDEWALK IN RPZ	CRITICAL ROOT ZONE IMPACT	CONDITION RATING	
1	26	28	619.42	100%	N	Poor	
2	39	42	395.30	28%	N	Fair	
3	28	30	0.00	0%	N	Poor	
4	32	35	0.00	0%	N	Fair	
5	6	7	32.99	100%	Y	Fair	
6	18	20	0.00	0%	N	Good	
7	24	26	22.67	4%	N	Poor	
8	43	47	506.43	30%	N	Fair	
9	21	23	154.87	38%	N	Fair	
10	31	34	189.49	22%	N	Poor	
11	33	36	427.13	43%	N	Good	
12	40	43	334.01	23%	N	Good	*
13	24	26	55.55	11%	N	Fair	
14	37	40	271.44	22%	N	Fair	*
15	20	22	30.99	8%	N	Fair	
16	30	33	395.71	48%	N	Poor	

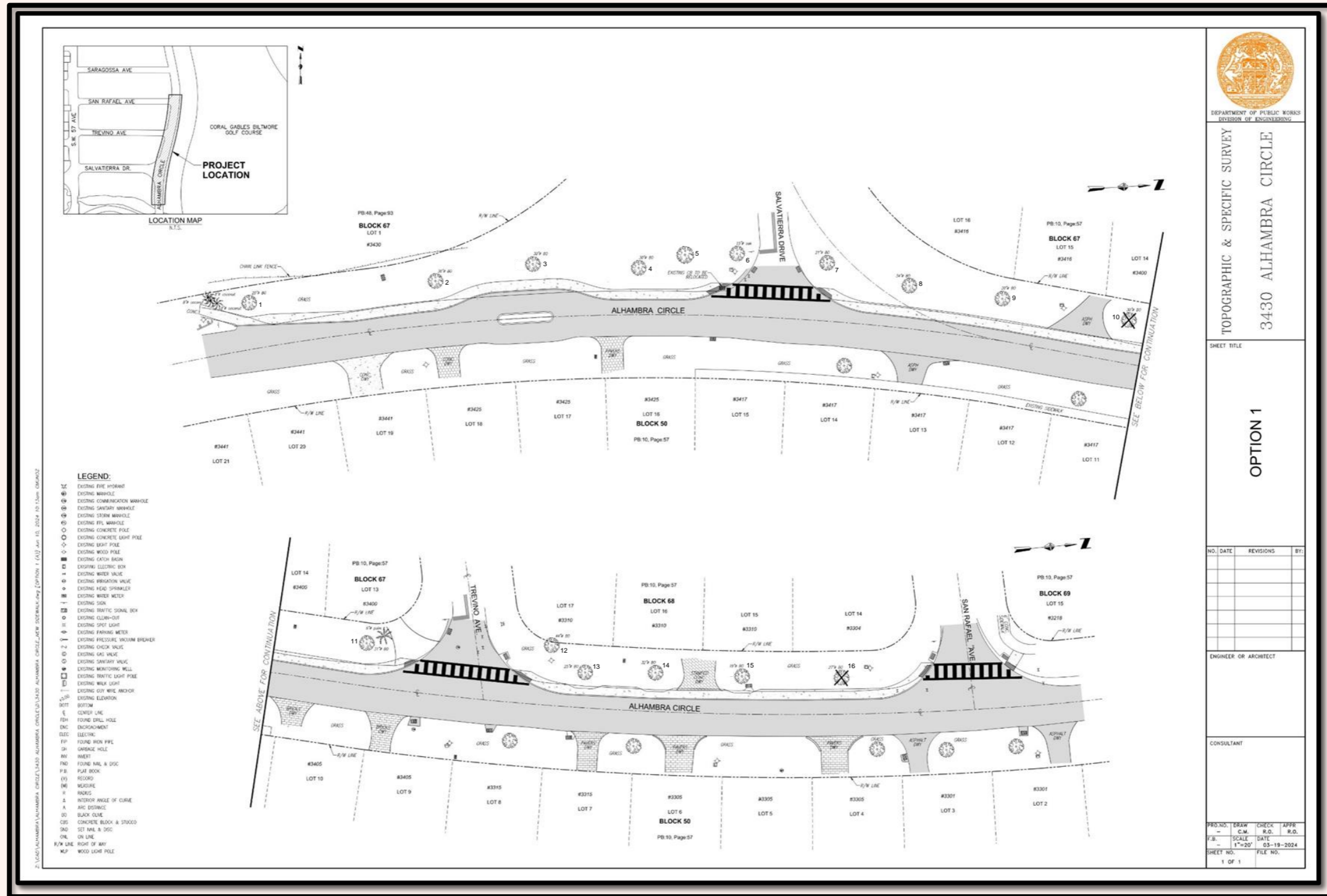
* Denotes sidewalks that were reduced to 5-feet

** Percentage calculations based on 6-foot sidewalk

PLAN VIEW – OPTION 1 (BALLOTTED)

2

2



TREE NO. 1

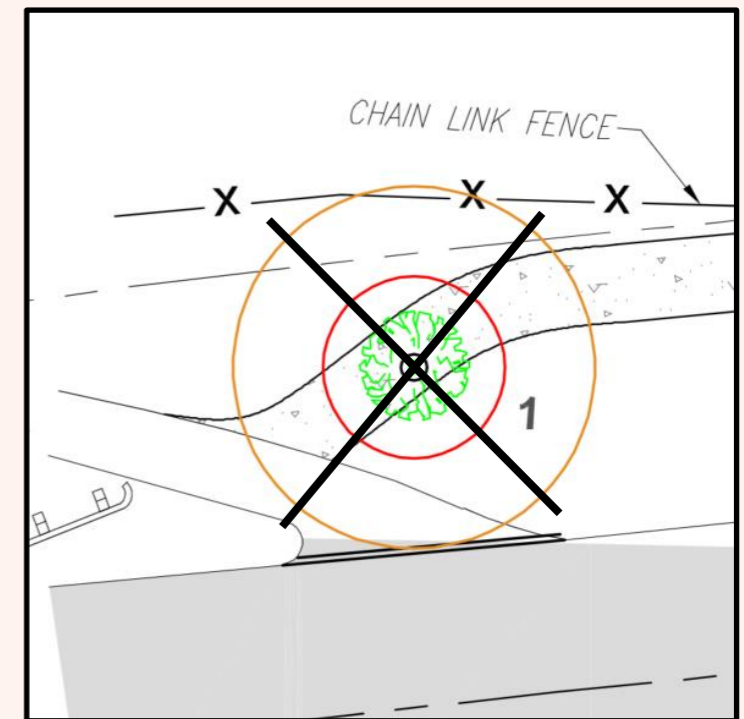
2

2



Tree Details:

- Black Olive (Specimen)
- Poor Condition
- 26-inch diameter
- 28-foot RPZ
- 100% sidewalk (6') impact in RPZ



TREE NO. 2

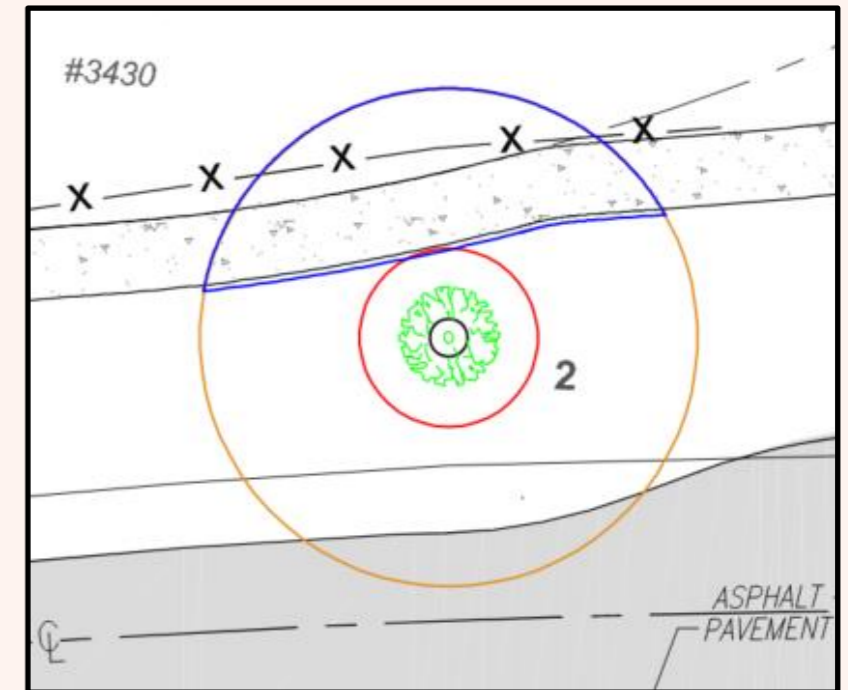
2

2



Tree Details:

- Black Olive (Specimen)
- Fair Condition
- 39-inch diameter
- 42-foot RPZ
- 28% sidewalk (6') impact in RPZ
- 26% sidewalk (5') impact in RPZ

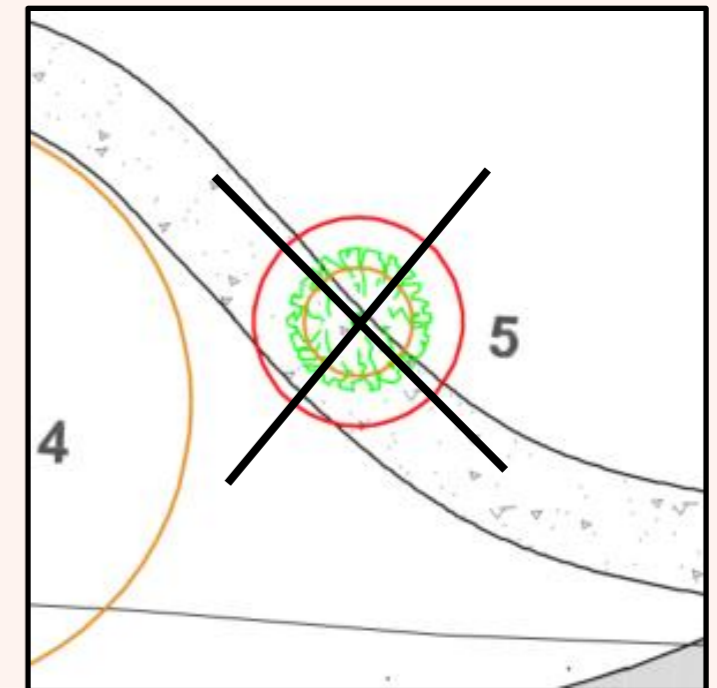


TREE NO. 5



Tree Details:

- Crape Myrtle
- Fair Condition
- 6-inch diameter
- 7-foot RPZ
- 100% sidewalk (6') impact in RPZ

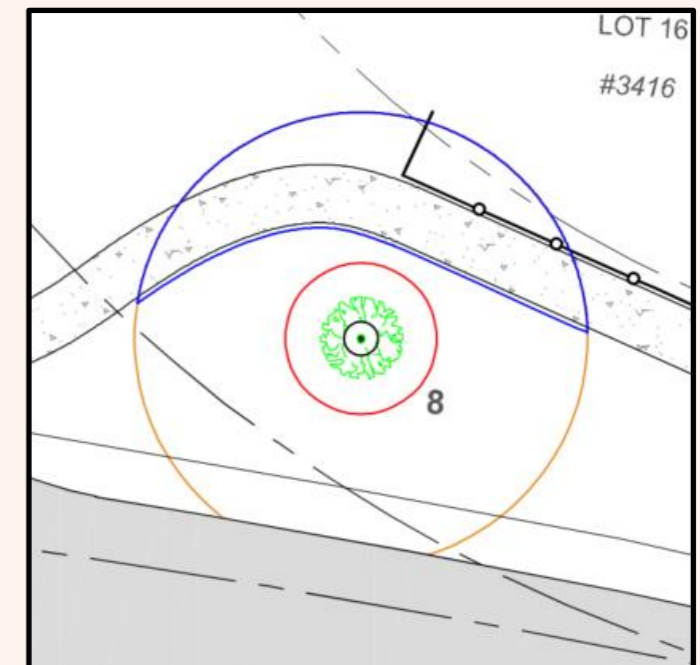


TREE NO. 8



Tree Details:

- Black Olive (Specimen)
- Fair Condition
- 43-inch diameter
- 47-foot RPZ
- 30% sidewalk (6') impact in RPZ
- 27% sidewalk (5') impact in RPZ



TREE NO. 9

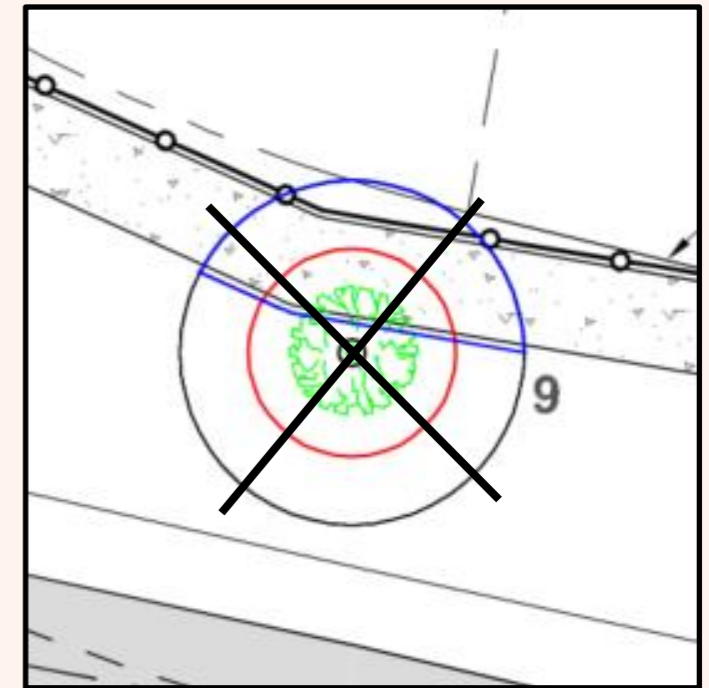
2

2



Tree Details:

- Black Olive (Specimen)
- Fair Condition
- 21-inch diameter
- 23-foot RPZ
- 38% sidewalk (6') impact in RPZ



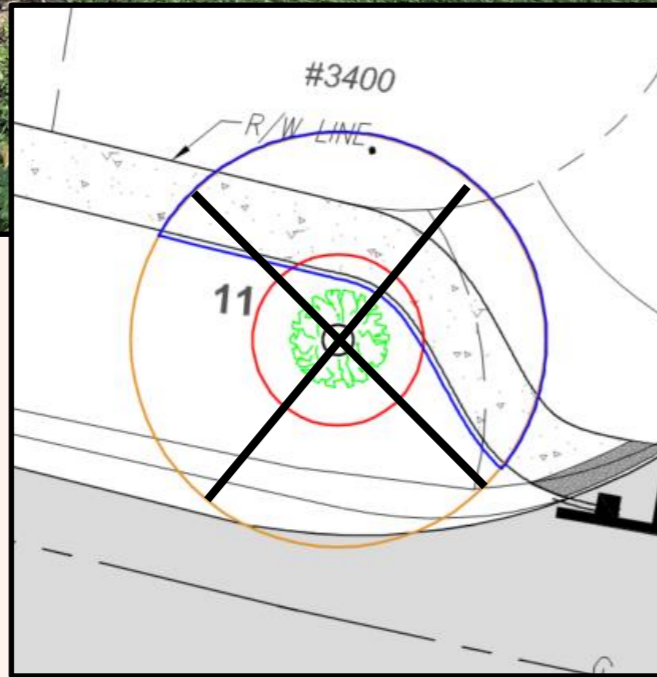
TREE NO. 11

2

2

Tree Details:

- Black Olive (Specimen)
- Good Condition
- 33-inch diameter
- 36-foot RPZ
- 43% sidewalk (6') impact in RPZ
- Driveway approach will need to be relocated as part of the project

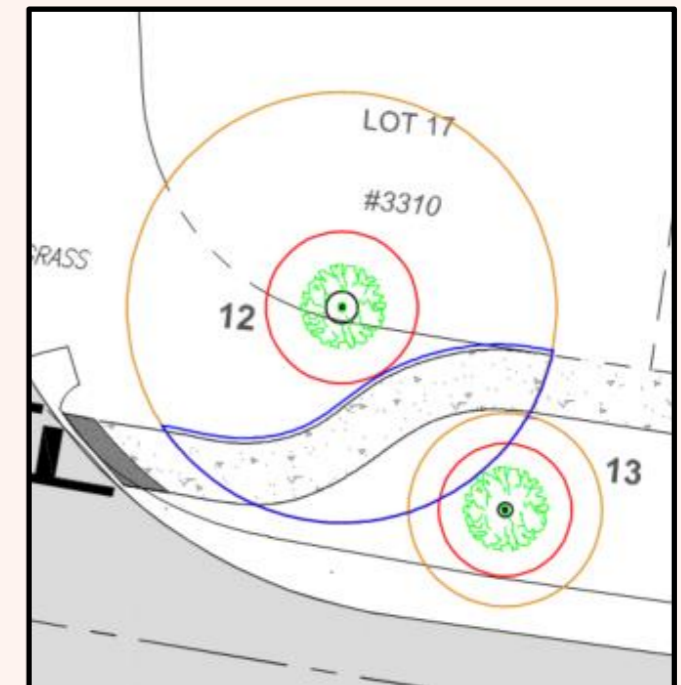


TREE NO. 12



Tree Details:

- **Black Olive (Specimen)**
- **Good Condition**
- **40-inch diameter**
- **43-foot RPZ**
- **26% sidewalk (6') impact in RPZ**
- **23% sidewalk (5') impact in RPZ**

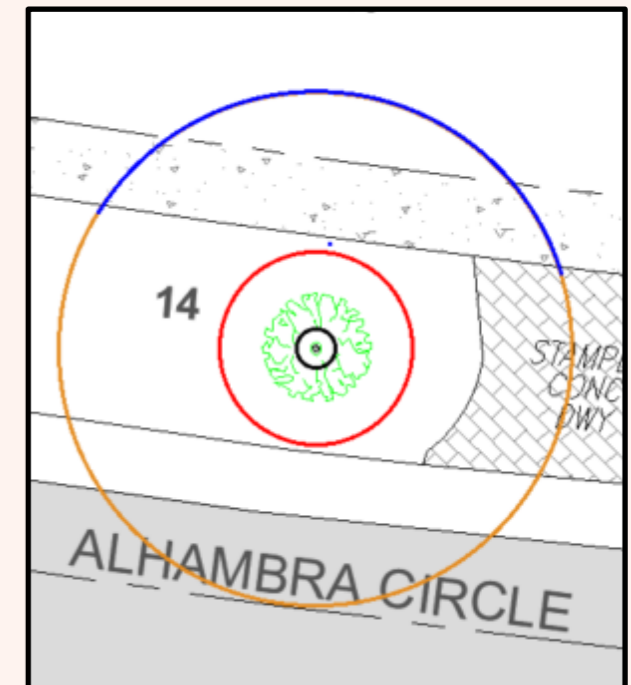


TREE NO. 14



Tree Details:

- Black Olive (Specimen)
- Fair Condition
- 37-inch diameter
- 40-foot RPZ
- 25% sidewalk (6') impact in RPZ
- 22% sidewalk (5') impact in RPZ



TREE NO. 16

2

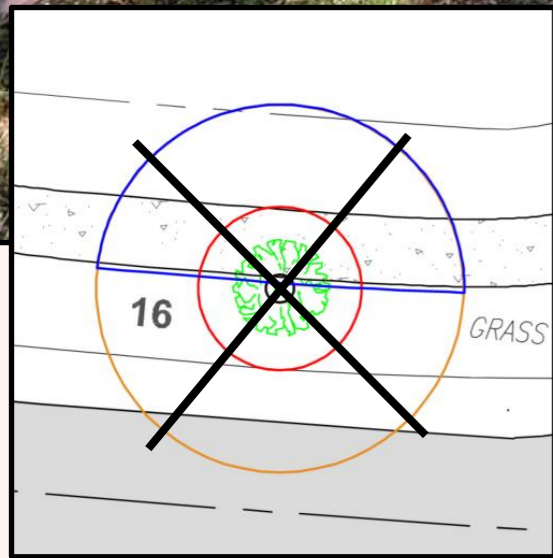
2



Tree Details:

- Black Olive (Specimen)
- Poor Condition
- 30-inch diameter
- 33-foot RPZ
- 48% sidewalk (6') impact in RPZ

- Recommend removal and offsetting sidewalk



SUMMARY



SIDEWALK OPTION	# OF TREES TO BE REMOVED
OPTION 1 (WITH CURB)	2
OPTION 3 (6' SIDEWALK AT ROW LINE)	7
OPTION 3 (MODIFIED)	5 <i>(WILL MONITOR TREE #2 AND TREE# 8)</i>
OPTION 4 (CURB WITH 3' LANDSCAPE STRIP) (INCLUDES TWO TREES FROM OPTION 1)	8 <i>(WILL MONITOR TREE #26)</i>

Thank you!

Public Works Department: *Keeping the City Beautiful Yesterday, Today & Tomorrow*

PWDepartment@coralgables.com

**CORAL
GABLES**
THE CITY BEAUTIFUL