

EXHIBIT A



ARTS IN PUBLIC PLACES APPLICATION

January 2025

4241 AURORA – JAUME PLENSA



REQUEST FOR ARTIST PRE-QUALIFICATION

- An Artist Statement including a brief statement of the artist's professional background, working methods, and public art experience
 - The artist has worked in over 60 major cities across the world showcasing exhibitions of public art. Please refer to Exhibit A for a detailed list of the artists' projects in public space. Also, please refer to the artists website for a map of all public art exhibitions - <https://jaumeplensa.com/biography/projects-in-public-space>
 - Please refer to the artist website for detailed information of all past work and experience as it pertains to public art. All private collections are kept confidential - <https://jaumeplensa.com/>
- Current resume
 - Jaume Plensa, born in 1955 in Barcelona, Spain, is a renowned contemporary sculptor celebrated for his large-scale public installations that explore themes of humanity, language, and spirituality. His work spans public art, graphic art, and collaborations with theater and opera. Plensa studied at the Llotja School of Art and Design and the Sant Jordi School of Fine Arts in Barcelona. He launched his career with his first exhibition in 1980. Plensa has held teaching positions and delivered lectures at numerous institutions worldwide. He has taught at the École Nationale Supérieure des Beaux-Arts in Paris and the School of the Art Institute of Chicago. Plensa's work has been exhibited in prominent museums and galleries across Europe, the United States, and Asia. His public sculptures are installed in major cities worldwide, including Chicago, New York, London, and Tokyo.
 - Exhibit for artists past awards to be provided upon request
 - Exhibit for artists' public space exhibitions to be provided upon request
 - Exhibit for the Artists' Solo Exhibitions to be provided upon request
 - Exhibit for the Artists' Group Exhibitions to be provided upon request
 - Exhibit for the Artists' Opera Projects to be provided upon request
 - Exhibit for the Artists' Past Lectures to be provided upon request
- At least three (3) professional references for public art related work, including the contact information for each reference
 - Coconut Grove Tigertail Park – Patria Garcia Velez Hannah – (305)-431-5067 phannah@relatedgroup.com
 - City of Leuven, Belgium – UK Leuven University Permanent Exhibition (500 Year Anniversary) – Geert Bouckaert +32163232980 geert.bouckaert@kuleuven.be
 - Ayuntamiento de Madrid – Plaza Colon – Masaveu Family – fernando@masaveu.com
- Up to six (6) images of past work, which may include detail images. Please include an image list with image number, title, medium, dimensions, date, location, client/agency, size, budget, completion date, and a brief written description. Please limit images to no more than two per project.
 - Exhibit to be provided upon request
- You may also include reviews, new articles, or related information
 - Exhibit to be provided upon request. For a full list of articles please refer to the artist website in the following link - <https://jaumeplensa.com/bibliography/press-pdf>



PUBLIC ART IN PRIVATE DEVELOPMENT:

- A description of the proposed development
 - 4241 Aurora is a mixed-use development project located at 4241 Aurora Street in the Design and Innovation District of Coral Gables. The building will feature luxury residential units, a boutique office component and ground level retail. In addition, the project will also include a 5,000 +/- square foot park to be deeded to the City of Coral Gables as stipulated in the project's site plan approval. The developer wishes to place the artwork within the perimeter of this deigned park which serves as a focal point of connectivity between the Shoppes of Merrick Park and the surrounding residential community and major local thoroughfares. The project's architect of record is Arquitectonica and the landscape designer for the project and park is Arquitectonica GEO.
- A description of the proposed artwork
 - Jaume Plensa (Barcelona, 1955) is a world know artist of materials, sensations and ideas. His references include literature, especially poetry, music, religion and thought. He considers himself, above all, a sculptor, although his creative process has included multiple disciplines including sculpture, of course, painting, opera, theater, etc.
 - His work addresses the very condition of being: its physical and spiritual essence, ontological awareness of present and past, moral codes and dogmas, and our relationship with nature. What we cannot explain is, precisely, what makes us human. Plensa's objective is not to create objects, but to develop relationships that embrace everyone. A clear example is Millenium Park in Chicago or any other examples in 5 continents.
 - Minna presents itself as a monumental presence of iconological young lady that simultaneously emanates peace and serenity. This sculpture cast in bronze depicting a young woman with her eyes closed in a state of repose rising from a firm raw and pure stone.
- Artist rendering (to scale). Please include day and night views from different angles in context to the site
 - Please refer to Exhibit A for artwork renderings and Exhibit B for site installation renderings. Please note, the renderings and site plan reflect the art work's proposed location within the park as a result of feedback from city and neighborhood meetings during the project's site plan approval and per the recommendation of approval from the Arts Advisory Panel.
- An artist scope of work and a site plan showing the location of the artwork
 - The artist will manufacture the artwork in the studio located in Barcelona, Spain. Upon completion the artist will ship the artwork to Coral Gables. Furthermore, the artist will be present at the park opening. Please refer to Exhibit C for the site plan and Exhibit D for the location of the artwork.
- A statement of how the proposed artwork addresses broader City urban design goals
 - Fascinated by the duality of the tangible and intangible, Jaume Plensa, who is considered one of the most influential artists on public space, creates monumental sculptures that appear to transcend time and space, despite their formidable size. His works in the public realm are celebrations of life that elevate their own physical material to the unseeable. This idealistic portrait evokes a sense of stillness and serenity, despite being situated amidst the bustling urban landscape of Coral Gables.
- Specific goals for the artwork
 - Minna will alter the area's streetscape and anchor a reimagined public space: The portrait of a young girl with her eyes closed in quiet (inside)contemplation is created with the intention of passersby looking inward. Plensa's vision is for the art to act as a metaphor for humanity's



dreams for the future and for a shared human experience; a concept needed now more than ever before. A pure invitation to the most needed internal silence.

- The process used for selection of the artist
 - The artist selection process was conducted through a combination of direct outreach to renowned artists, galleries, and art consultant specializing in public art. Jaume Plensa was selected based on his international reputation and his ability to deliver a site-specific piece that resonates with the themes of identity, connection, and community. The selection panel included representatives from the development team, art consultants, and local stakeholders.
- The budget, including any set-aside for project management
 - The price of the art work: \$700,000
 - Transport from Barcelona to Coral Gables: as per previous experiences would be estimated between \$9,000 to \$13,000
- A schedule for the development and commissioning of the artwork
 - The artist is already working on the sculpture. We can estimate a month for it to be finished and shipping can be arranged then. Express shipping can be hired if needed too.
- The intended approach to managing the project
 - Project management will be overseen by Constellation and the Boschetti Group, who have extensive experience in the planning and execution of mixed-use developments and green-space planning. Regular progress meetings will be held with Jaume Plensa and his consultants to ensure timelines and quality standards are met. A dedicated liaison will be assigned to facilitate communication between all parties and address any issues promptly.
- Credentials of any consultants who will facilitate the process
 - Jaume Plensa Studio and Galeria Senda.
- Planned maintenance of the piece
 - The paint covering the sculpture is a two-component polyurethane topcoat, FINITION 911 CROMATIC PU MS MAT M7-671 (FP911), designed to protect the piece from environmental damage. For maintenance, the sculpture should be cleaned with water and receive a fresh coat of paint as needed to preserve its appearance.
 - Once the park is dedicated to the City upon project completion, all maintenance responsibilities for the artwork will be assumed by the City of Coral Gables. The City will oversee inspections, cleaning, and any necessary repairs to ensure the longevity and integrity of the piece over time.
 - This park dedication, part of a broader entitlement campaign led by the Sponsor, is a key feature of the development plan, aligning with community and urban planning goals set forth by the City.
- General Specifications
 - **Title:** Minna
 - **Year:** 2025 (to be produced)
 - **Edition:** This sculpture will be the first (the “Mother”) in a limited series of five, with Jaume Plensa’s commitment that this will be the only edition installed in Miami-Dade County
 - **Material:**
 - Sculpture: White painted bronze (2,000 Kg)
 - Base: Macael Marble (2,000 Kg)



EXHIBIT A (Artwork Renderings)

FRONT VIEW





BACK VIEW





MATERIALS



White painted bronze



Macael marble



GENERAL WEIGHTS



1 Piece Sculpture
White painted bronze
2.000 Kg

1 Piece Base
Macael marble
2.000 Kg

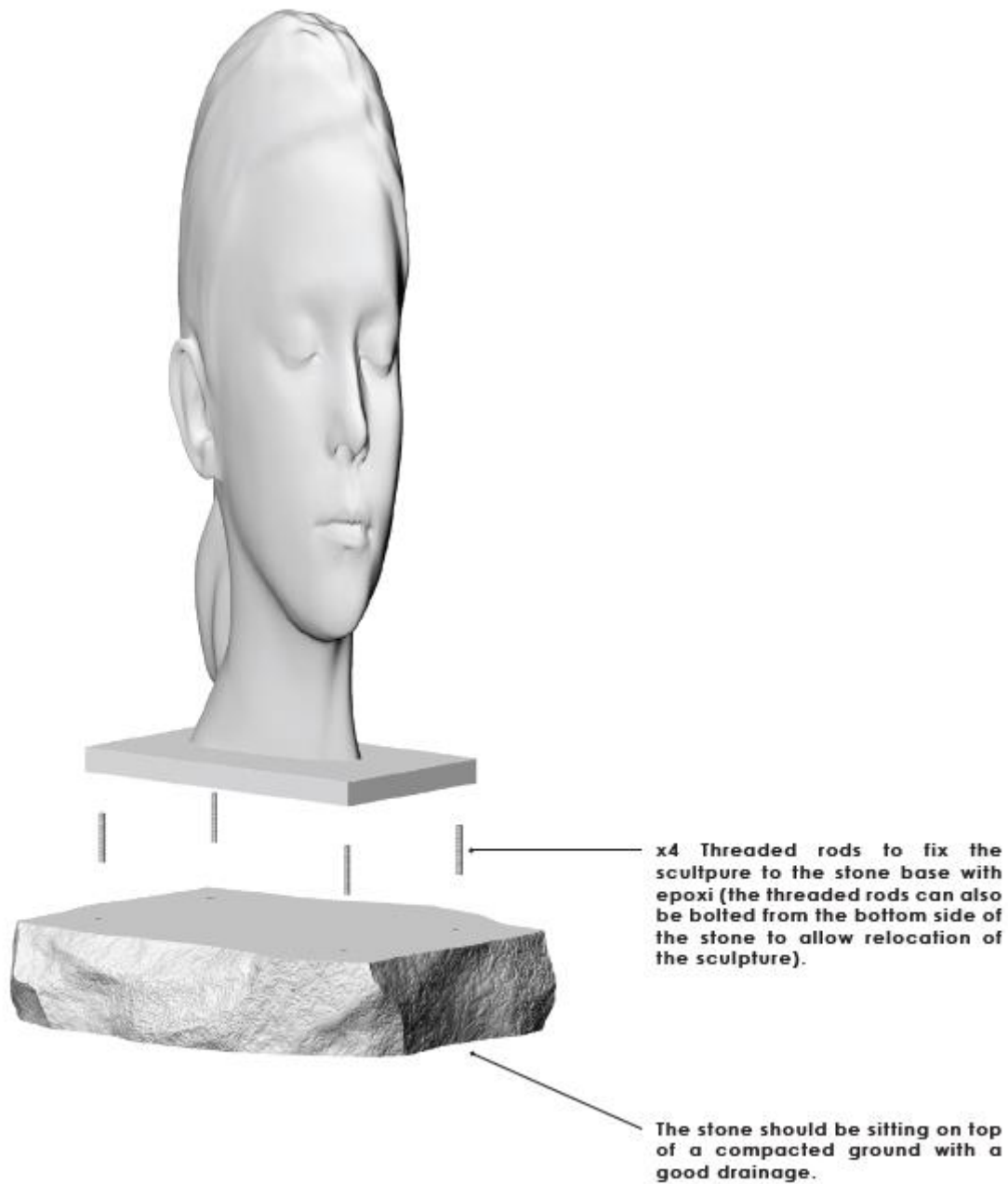


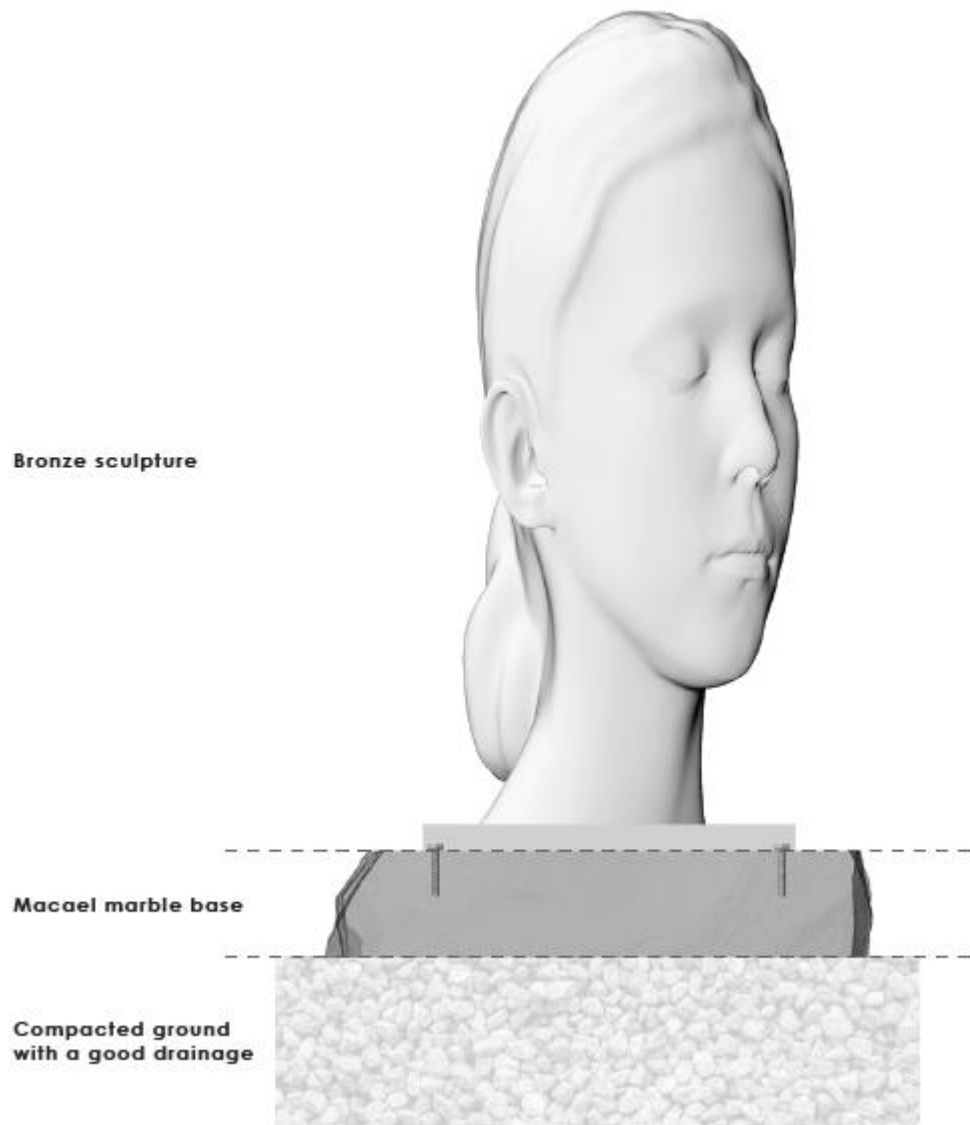
GENERAL DIMENSIONS





ANCHOR PROPOSAL





The paint covering the sculpture is FINITION 911 CROMATIC PU MS MAT M7-671 (FP911), a two components polyurethane topcoat. For maintenance of the piece, clean with water and apply a coat of paint when necessary.



EXHIBIT B (Project Renderings)







EXHIBIT C (Park Art Installation Site Plan)



EXHIBIT C (Park Art Installation Site Plan Cont.)



BUTTERFLY GARDEN

BUTTERFLY GARDEN

BUTTERFLY GARDEN

BUTTERFLY GARDEN

BUTTERFLY GARDEN

BUTTERFLY GARDEN



Zinnia hybrids



Impatiens spp.



Milkweed Asclepias spp.



Vervain Glandularia tamponsis



Purple Coneflower Echinacea purpurea



Blanket Flower Gaillardia pulchella



Plumbago Plumbago auriculata



Firebush Hamelia patens

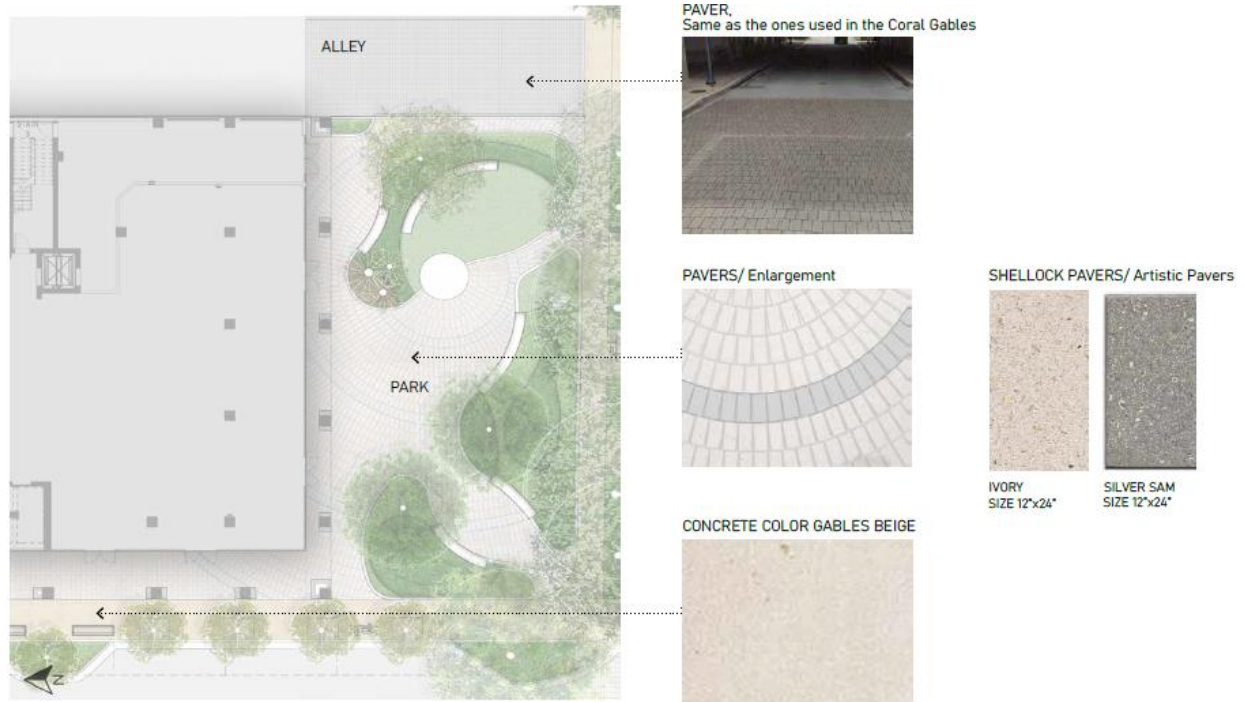


EXHIBIT D (Location)

