

*ALHAMBRA CIRCLE  
SIDEWALK*

---

AUGUST 24, 2022

**CORAL  
GABLES**®  
THE CITY BEAUTIFUL





# BACKGROUND

**PROJECT LIMITS:** ALHAMBRA CIRCLE FROM SALVATIERRA DRIVE TO SAN RAFAEL DRIVE

**PROJECT LENGTH**

APPROXIMATELY 0.12 MILES

**THREE INTERSECTIONS**

SALVATIERRA DRIVE

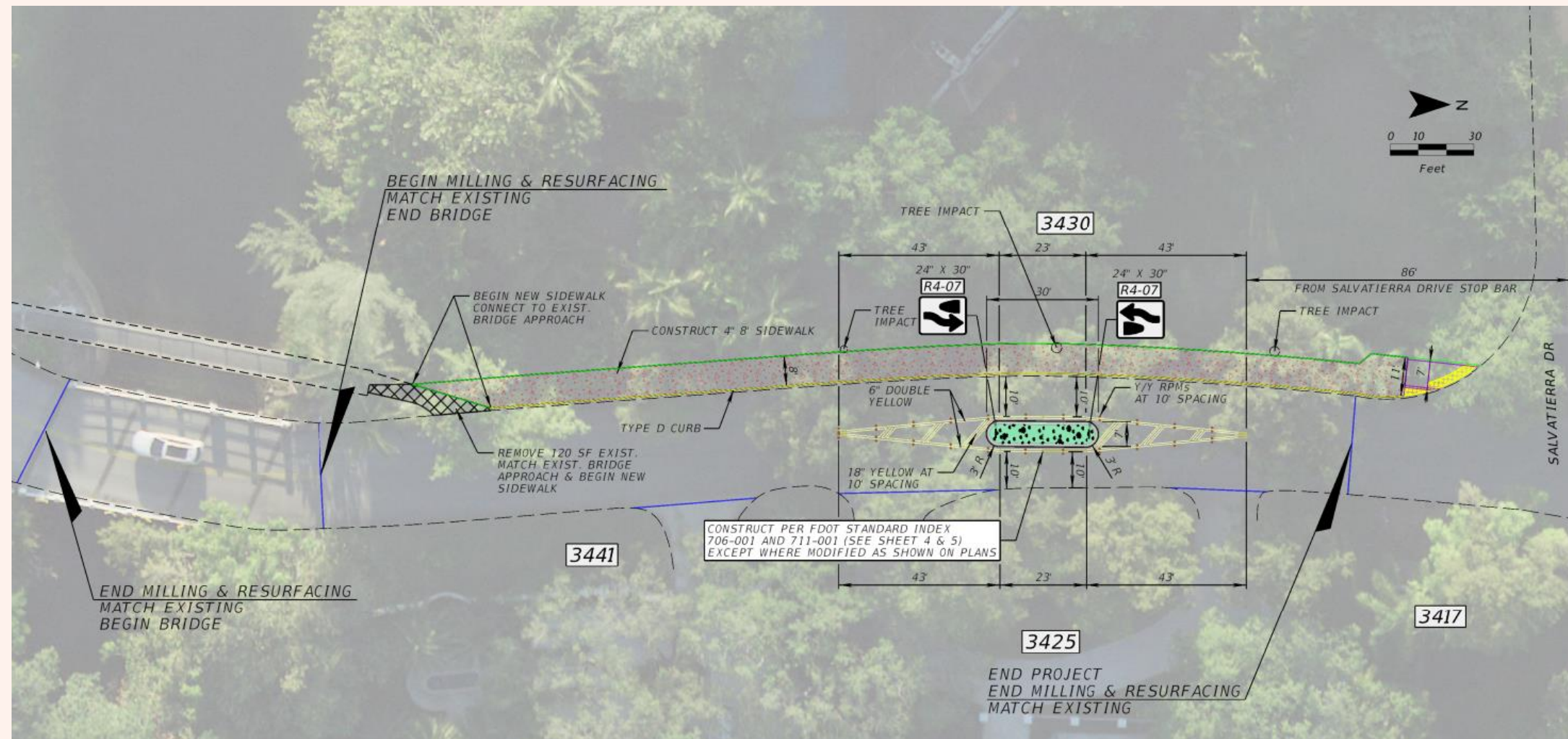
TREVINO AVENUE

SAN RAFAEL AVENUE



# BACKGROUND

- SIDEWALK CONNECTION FROM CORAL GABLES WATERWAY BRIDGE TO LE JEUNE ROAD
- TRAFFIC CALMING PROJECT ON SALVATIERRA DRIVE WILL INCLUDE SIDEWALK ON WEST SIDE OF THE PROJECT TO PROVIDE ACCESS TO BRIDGE
- COMPLETE MISSING CONNECTION FOR APPROXIMATELY 2.93 MILES OF CONTINUOUS SIDEWALK ALONG ALHAMBRA CIRCLE





# PROPOSED SIDEWALK

## SALVATIERRA DRIVE TO TREVINO AVE

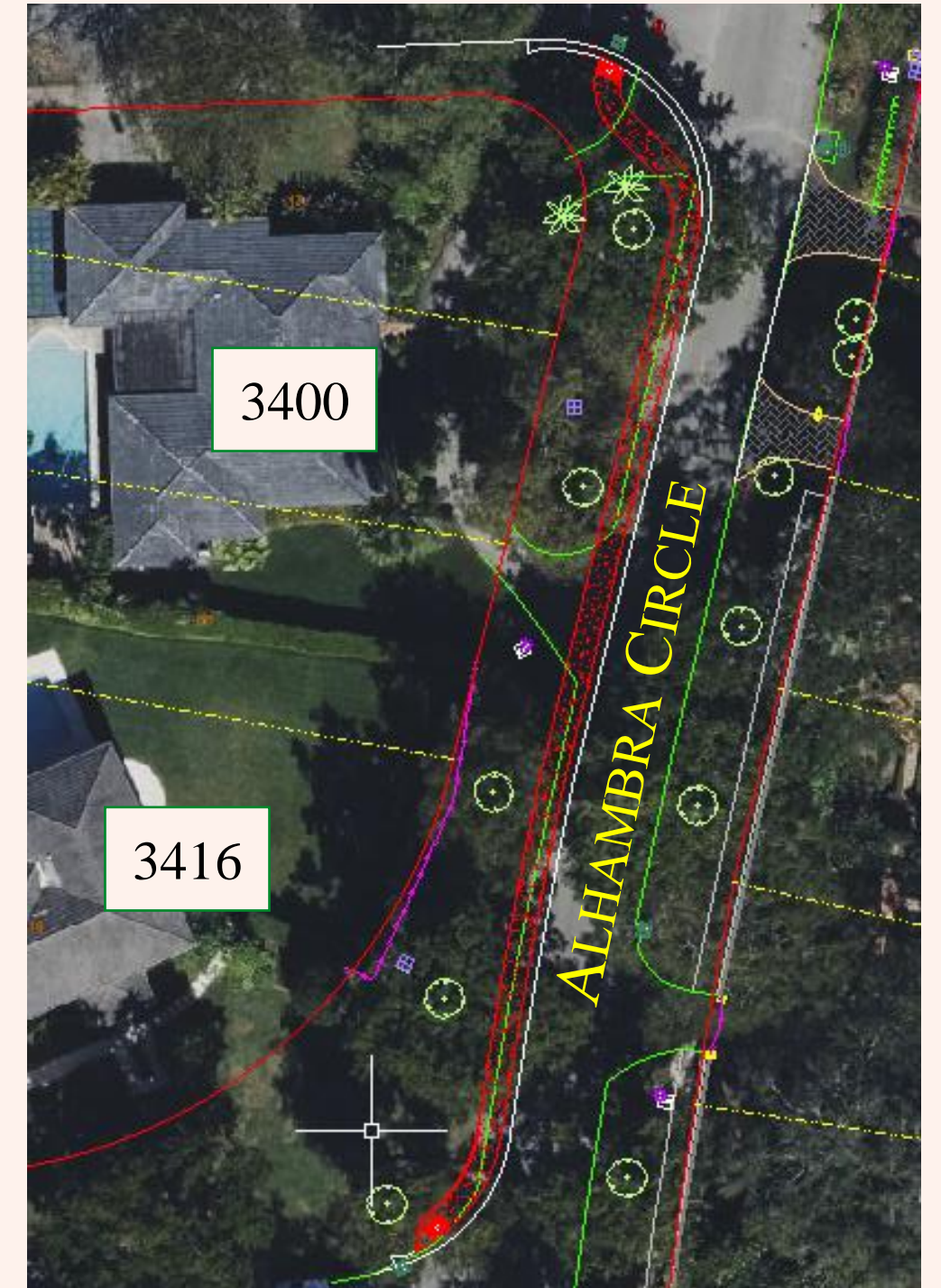
3416 AND 3400 ALHAMBRA CIRCLE

6-FOOT PROPOSED CONCRETE SIDEWALK

CONCRETE CURB

PAVEMENT NARROWING

HIGH EMPHASIS CROSSWALKS





# 3416 ALHAMBRA CIRCLE





# 3400 ALHAMBRA CIRCLE

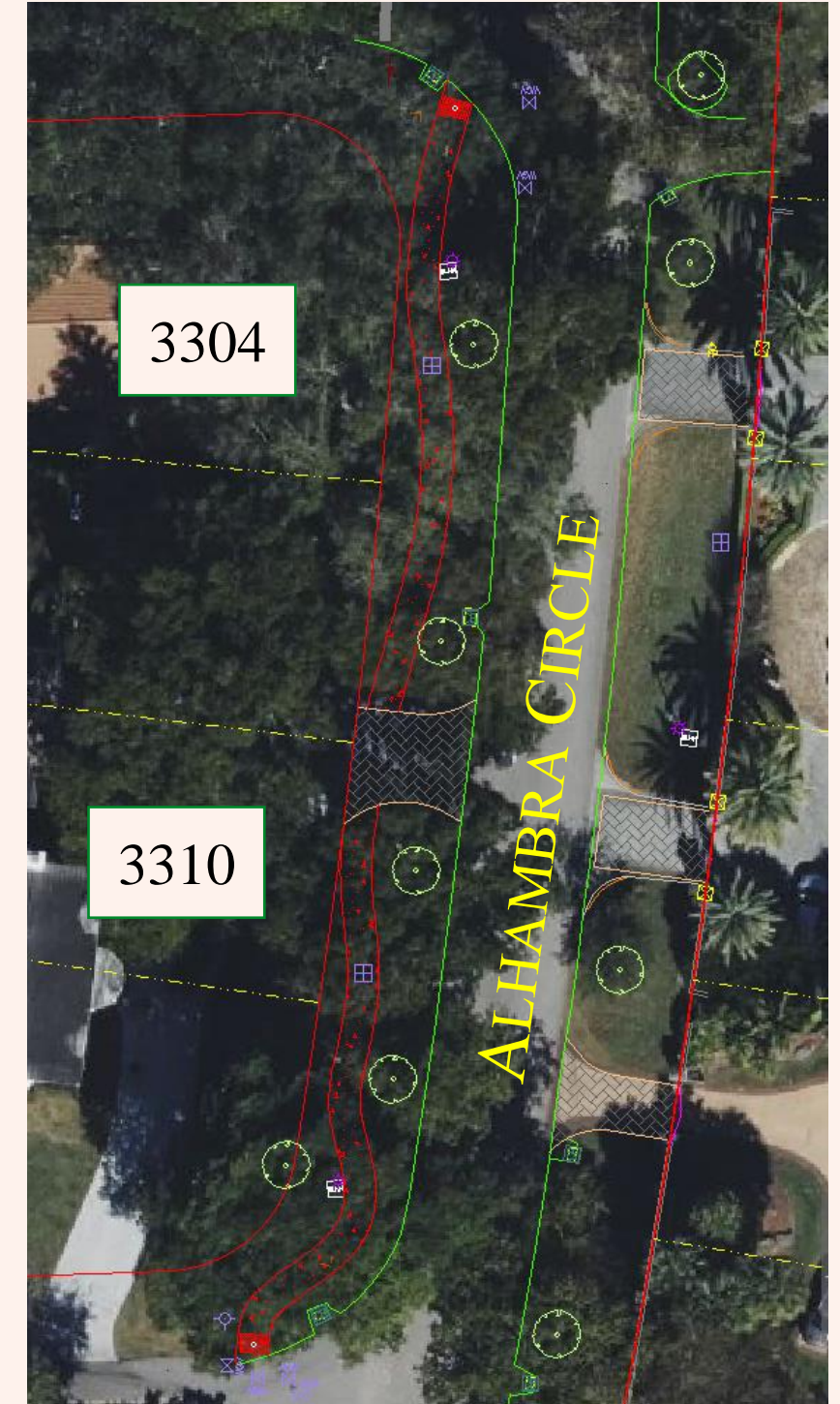




# PROPOSED SIDEWALK

## TREVINO AVE TO SAN RAFAEL AVE

- 3310 AND 3304 ALHAMBRA CIRCLE
- 6-FOOT PROPOSED CONCRETE SIDEWALK
- HIGH EMPHASIS CROSSWALKS





# 3310 ALHAMBRA CIRCLE





# 3304 ALHAMBRA CIRCLE

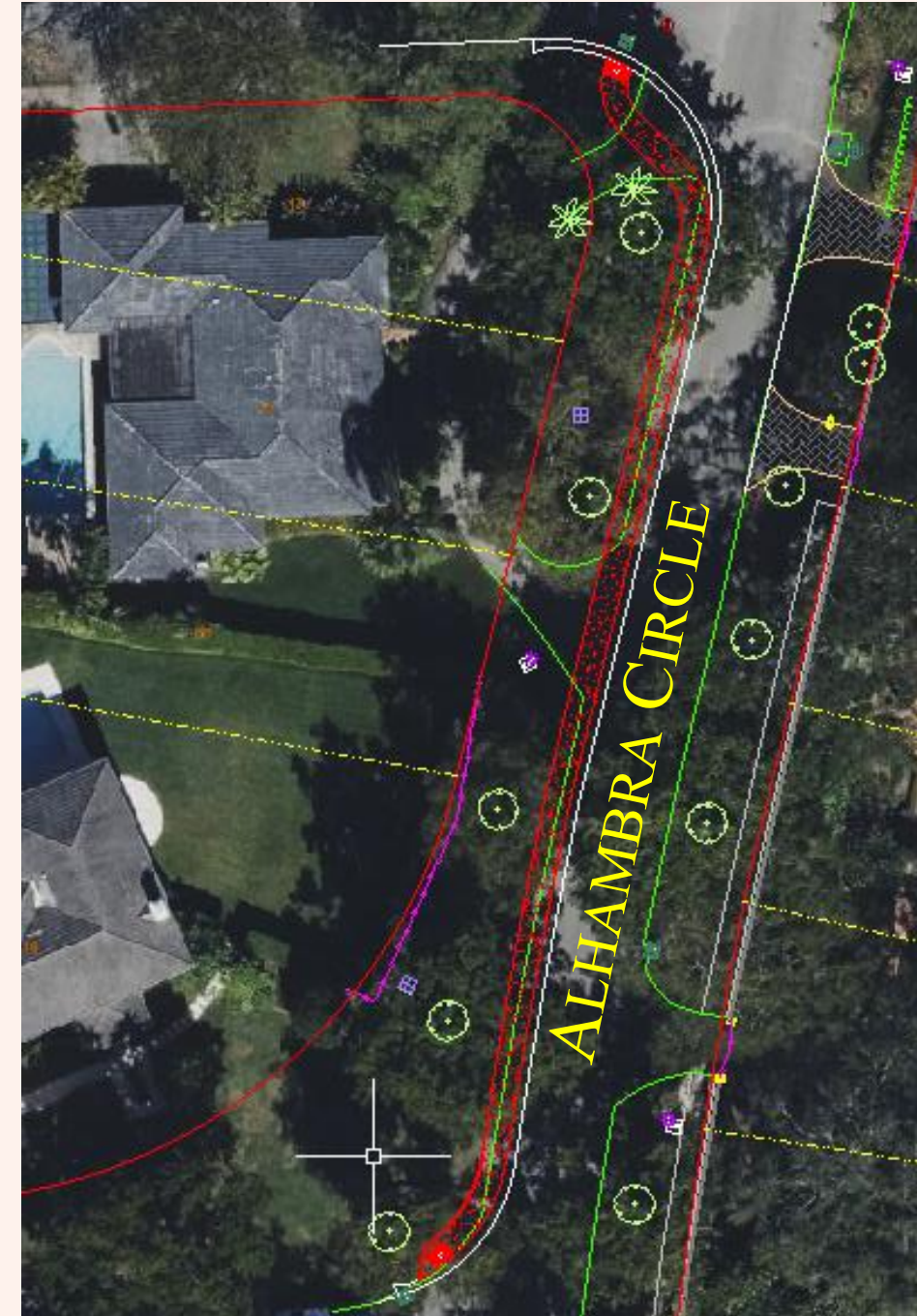




# SUMMARY



- NO TREES WILL BE REMOVED OR RELOCATED
- TWO (2) DRIVEWAYS WILL BE IMPACTED
  - TWO (2) ASPHALT DRIVEWAYS
  - DRAINAGE WILL BE IMPACTED
    - NEW CURB
  - ONE (1) CATCH BASIN TO BE RELOCATED
- PAVEMENT WILL BE NARROWED AND RESURFACED
- CONSTRUCTION ESTIMATE (NOT ESCALATED)
- SIDEWALK - \$56,000 (50% OWNER EXPENSE)
  - PAVING – \$25,000
  - DRAINAGE – TO BE DETERMINED





THANK YOU



CORAL  
GABLES  
THE CITY BEAUTIFUL

