

**CITY OF CORAL GABLES, FLORIDA**

**RESOLUTION NO. 2025-143**

A RESOLUTION OF THE CITY COMMISSION DIRECTING STAFF TO PROCEED WITH THE INSTALLATION OF A SIDEWALK WITH A CONCRETE CURB ALONG THE EDGE OF PAVEMENT AS APPROVED BY THE PROPERTY OWNERS ALONG ALHAMBRA CIRCLE FROM SOUTH OF SALVATIERRA DRIVE TO SAN RAFAEL AVENUE.

**WHEREAS**, the City of Coral Gables has identified the need for improved pedestrian infrastructure along Alhambra Circle from South of Salvatierra Drive to San Rafael Avenue; and

**WHEREAS**, on January 19, 2024, a Sunshine Meeting was held to discuss a proposed sidewalk installation to enhance pedestrian safety, accessibility, and infrastructure within the neighborhood; and

**WHEREAS**, during the May 21, 2024, City Commission meeting, City staff were directed to obtain concurrence from the property owners immediately abutting the proposed sidewalks; and

**WHEREAS**, the returned ballots from impacted property owners were unanimously in favor of the installation of a sidewalk along the edge of the pavement with a concrete curb (Exhibit “A”); and

**WHEREAS**, the proposed installation will be designed and constructed in accordance with applicable engineering standards and specifications;

**NOW, THEREFORE, BE IT RESOLVED BY THE COMMISSION OF THE CITY OF CORAL GABLES:**

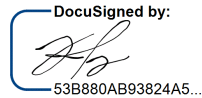
**SECTION 1.** That the foregoing “**WHEREAS**” clauses are hereby ratified and confirmed as being true and correct and are hereby made a specific part of this Resolution upon adoption hereof.

**SECTION 2.** That the City Commission directs staff to proceed with the design and construction of a sidewalk along the edge of pavement with a concrete curb as approved by the property owners immediately abutting the proposed sidewalks along Alhambra Circle from South of Salvatierra Drive to San Rafael Avenue.

**SECTION 3.** That this Resolution shall become effective upon the date of its passage and adoption herein.

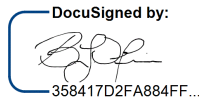
PASSED AND ADOPTED THIS TWENTIETH DAY OF MAY, A.D., 2025.  
(Moved: Anderson / Seconded: Lago)  
(Yeas: Anderson, Lara, Lago)  
(Nays: Castro, Fernandez)  
(Majority: (3-2) Vote)  
(Agenda Item: F-13)

APPROVED:

DocuSigned by:  
  
53B880AB93824A5...

VINCE LAGO  
MAYOR

ATTEST:

DocuSigned by:  
  
358417D2FA884FF...

BILLY Y. URQUIA  
CITY CLERK

APPROVED AS TO FORM AND  
LEGAL SUFFICIENCY:

DocuSigned by:  
  
9A595ED64D304E8...

CRISTINA M. SUÀREZ  
CITY ATTORNEY

TOPOGRAPHIC &amp; SPECIFIC SURVEY

3430 ALHAMBRA CIRCLE

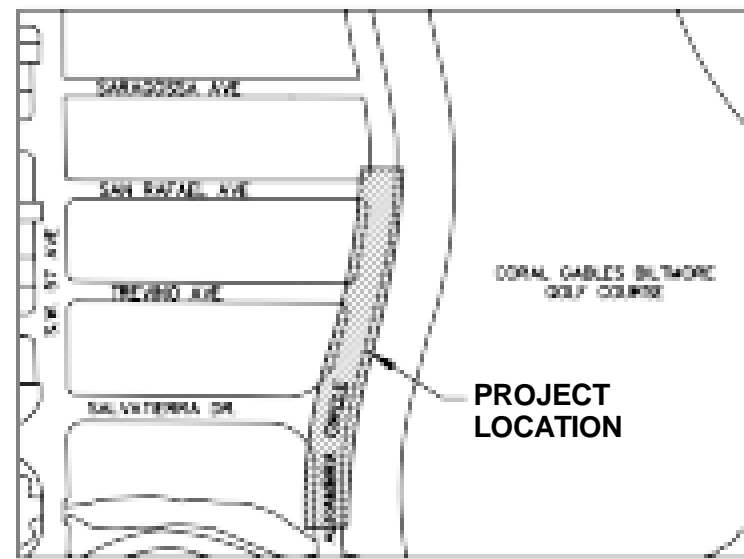
# EXHIBIT "A"

[illegible]

## CHAPTER 20 ARCHITECT

**DELLA**

PROJ. NO. -	DRAW C.M.	CHECK R.O.	APP. R.O.
V.B. -	SCALE 1"=20'	DATE 03-19-2024	
SHEET NO. 1 OF 1		FILE NO.	

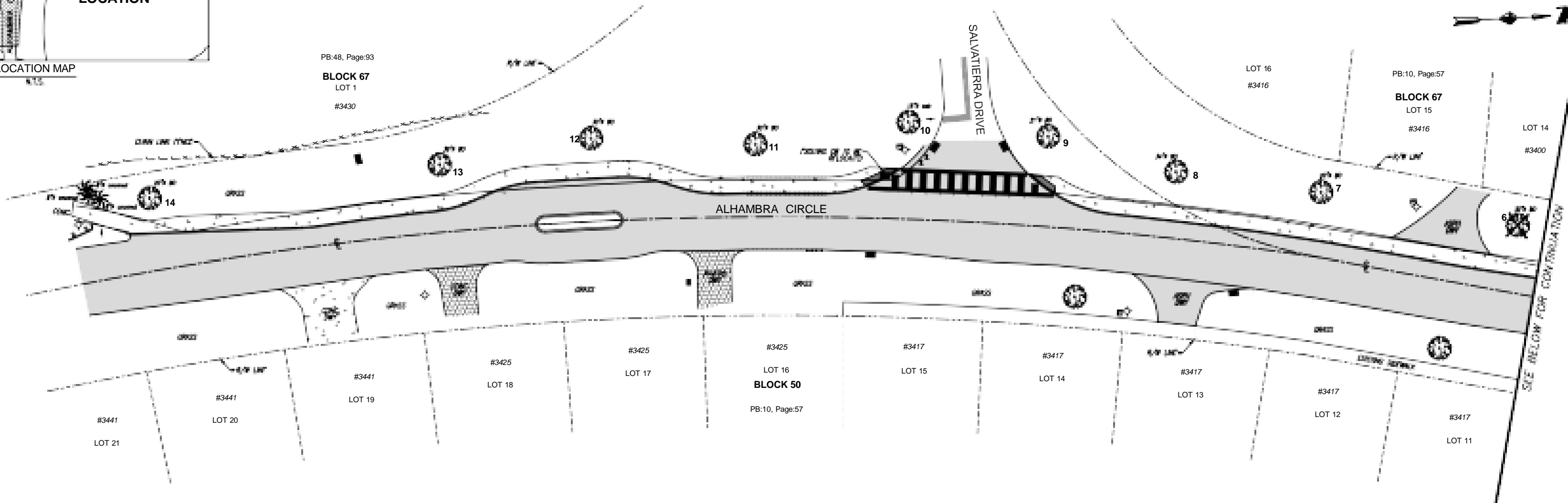


## LOCATION MAP

PB:48, Page:93

**BLOCK 67**  
LOT 1

#3430



LEGEND:

- 11 LITTING OVER MONDAY  
 12 LITTING MONDAY  
 13 LITTING COMMISSIONER MONDAY  
 14 LITTING JAWHAT MONDAY  
 15 LITTING FROM MONDAY  
 16 LITTING IN MONDAY  
 17 LITTING MONDAY POL  
 18 LITTING MONDAY LIGHT POL  
 19 LITTING LIGHT POL  
 20 LITTING WOOD POL  
 21 LITTING CATCH WASH  
 22 LITTING ELECTRIC WASH  
 23 LITTING WATER WASH  
 24 LITTING PROCTOR WASH  
 25 LITTING WASH PROCTOR  
 26 LITTING WATER WASH  
 27 LITTING WASH  
 28 LITTING WATER WASH, BOX  
 29 LITTING CULLEN-OUT  
 30 LITTING SPOT WASH  
 31 LITTING MONDAY WASH  
 32 LITTING PROCTOR WASH PROCTOR  
 33 LITTING CULLEN WASH  
 34 LITTING WASH WASH  
 35 LITTING JAWHAT WASH  
 36 LITTING MONDAY WASH  
 37 LITTING WASH LIGHT POL  
 38 LITTING WASH POL  
 39 LITTING CULLEN WASH  
 40 LITTING WASH  
 41 LITTING CULLEN WASH  
 42 LITTING WASH  
 43 LITTING WASH  
 44 LITTING WASH  
 45 LITTING WASH  
 46 LITTING WASH  
 47 LITTING WASH  
 48 LITTING WASH  
 49 LITTING WASH  
 50 LITTING WASH  
 51 LITTING WASH  
 52 LITTING WASH  
 53 LITTING WASH  
 54 LITTING WASH  
 55 LITTING WASH  
 56 LITTING WASH  
 57 LITTING WASH  
 58 LITTING WASH  
 59 LITTING WASH  
 60 LITTING WASH  
 61 LITTING WASH  
 62 LITTING WASH  
 63 LITTING WASH  
 64 LITTING WASH  
 65 LITTING WASH  
 66 LITTING WASH  
 67 LITTING WASH  
 68 LITTING WASH  
 69 LITTING WASH  
 70 LITTING WASH  
 71 LITTING WASH  
 72 LITTING WASH  
 73 LITTING WASH  
 74 LITTING WASH  
 75 LITTING WASH  
 76 LITTING WASH  
 77 LITTING WASH  
 78 LITTING WASH  
 79 LITTING WASH  
 80 LITTING WASH  
 81 LITTING WASH  
 82 LITTING WASH  
 83 LITTING WASH  
 84 LITTING WASH  
 85 LITTING WASH  
 86 LITTING WASH  
 87 LITTING WASH  
 88 LITTING WASH  
 89 LITTING WASH  
 90 LITTING WASH  
 91 LITTING WASH  
 92 LITTING WASH  
 93 LITTING WASH  
 94 LITTING WASH  
 95 LITTING WASH  
 96 LITTING WASH  
 97 LITTING WASH  
 98 LITTING WASH  
 99 LITTING WASH  
 100 LITTING WASH

**BLOCK 67**

PB:10, Page:57

**BLOCK 69**

