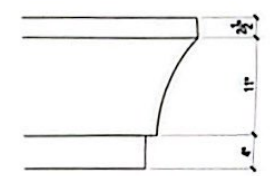


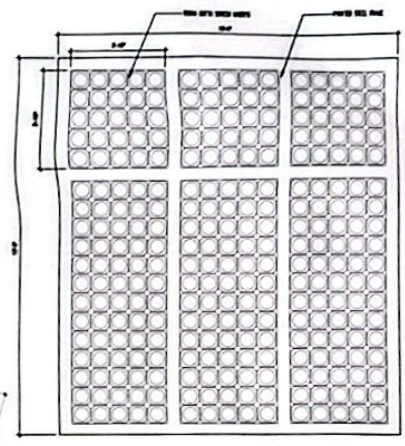
1 GROUND FLOOR PLAN
A-201 Scale: 3/32" = 1'-0"



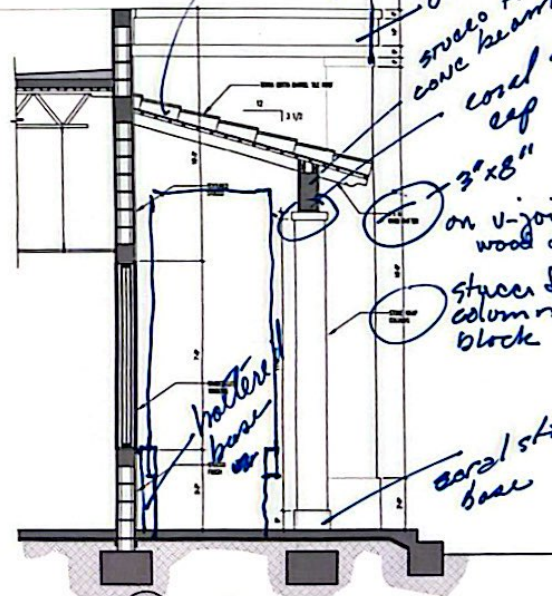
5 Cornice Detail
A-201 Scale: 1 1/2" = 1'-0"



3 Rafter Detail
A-201 Scale: 3" = 1'-0"



4 Stone Screen Detail
A-201 Scale: 1/2" = 1'-0"



2 Wall Section
A-201 Scale: 1/2" = 1'-0"

happened cap of pan
happened rafter
mission tile
omit
stucco finish
coral stone
cap
3"x8"
on v-joint
wood decking
stucco finish on
column
block
coral stone
base

CONSULTANTS
 LANDSCAPE ARCHITECT
 LAURA LILLENFELD & ASSOCIATES
 1000 W. 10th St. #100
 Southfield, MI 48034
 313.281.1100

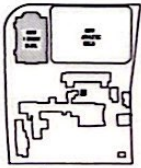
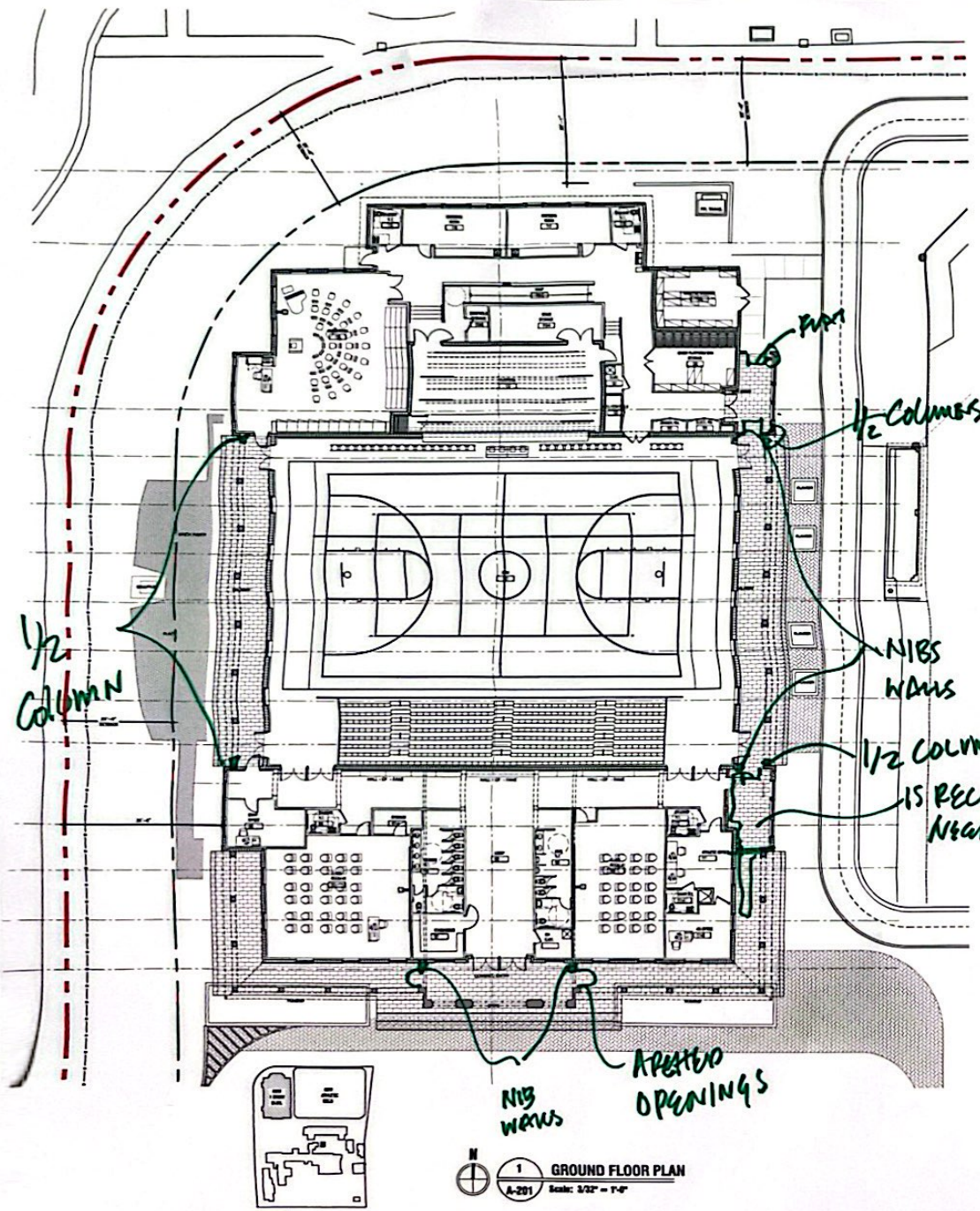

**ST. THERESA SCHOOL
 NEW MULTI-PURPOSE BLDG. &
 ATHLETIC FIELD**
 899 Indian Mound Trail Court
 Goshen, VT 05144


**ZYSKOVICH
 ARCHITECTS**
 ARCHITECTS
 100 W. 10th St. #100
 Southfield, MI 48034
 313.281.1100

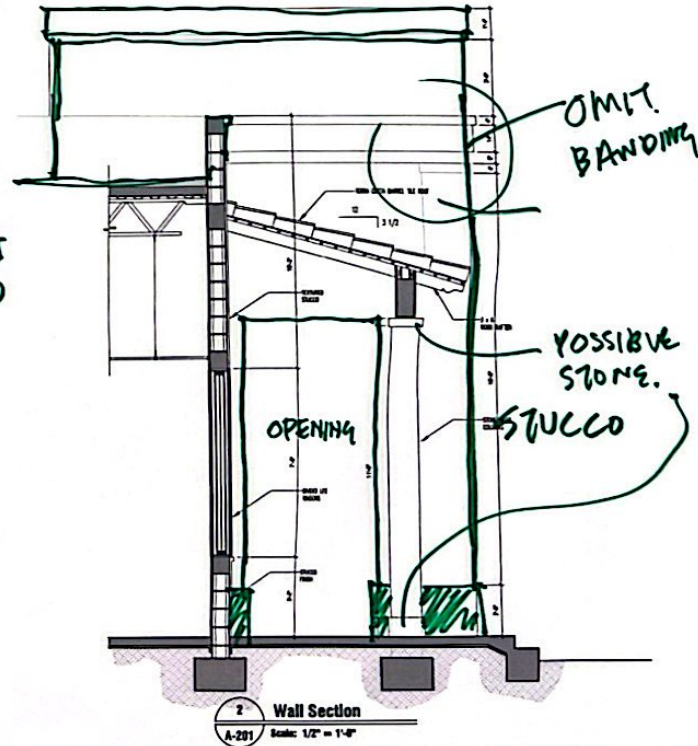
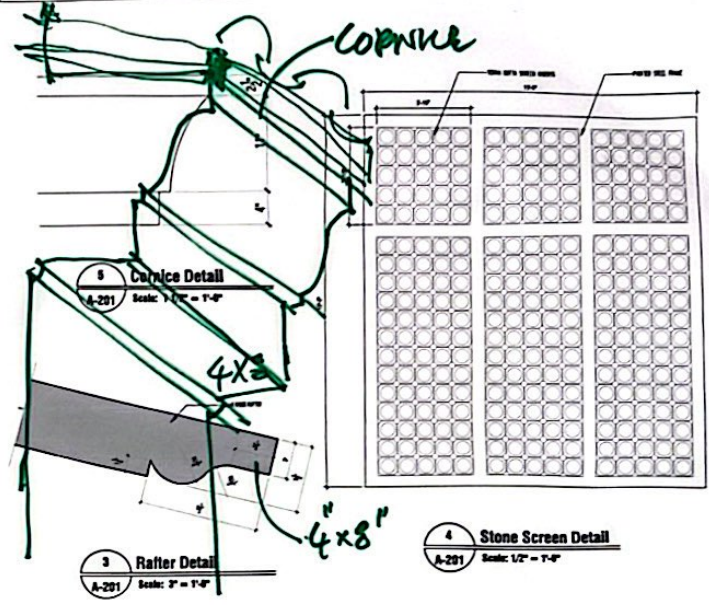
ARCHITECT
JOSE MURILLO
 Reg. No. AR-10870

**GROUND FLOOR
 PLAN**
 2024-0113 11-01-2024
A-201

BOARD OF ARCHITECTS REVIEW NOT FOR CONSTRUCTION



1 GROUND FLOOR PLAN
A-201 Scale: 3/32" = 1'-0"



2 Wall Section
A-201 Scale: 1/2" = 1'-0"

CHIEF ARCHITECT
LARISSA LERENA & ASSOCIATES
1000 N. 10th St., Suite 100
Phoenix, AZ 85006
PH: 602.425.1100

**ST. THERESA SCHOOL
NEW MULTI-PURPOSE BLDG. &
ATHLETIC FIELD**
1701 Indian School Trail Court
Phoenix, AZ 85016

**ZYSCOVICH
ARCHITECTS
ARCHITECTS**
1100 N. 10th St., Suite 100
Phoenix, AZ 85006
PH: 602.425.1100

JOSE L. MARQUEZ
Reg. No. 144-10010

NOT FOR CONSTRUCTION

NO.	DATE	REVISION

GROUND FLOOR PLAN
2024-01-13 11-21-2024
A-201