

# *City of Coral Gables Digital Transformation and Smart City and Initiatives and Awards*

*Sustainability, Resilience, Workability, Livability*

---

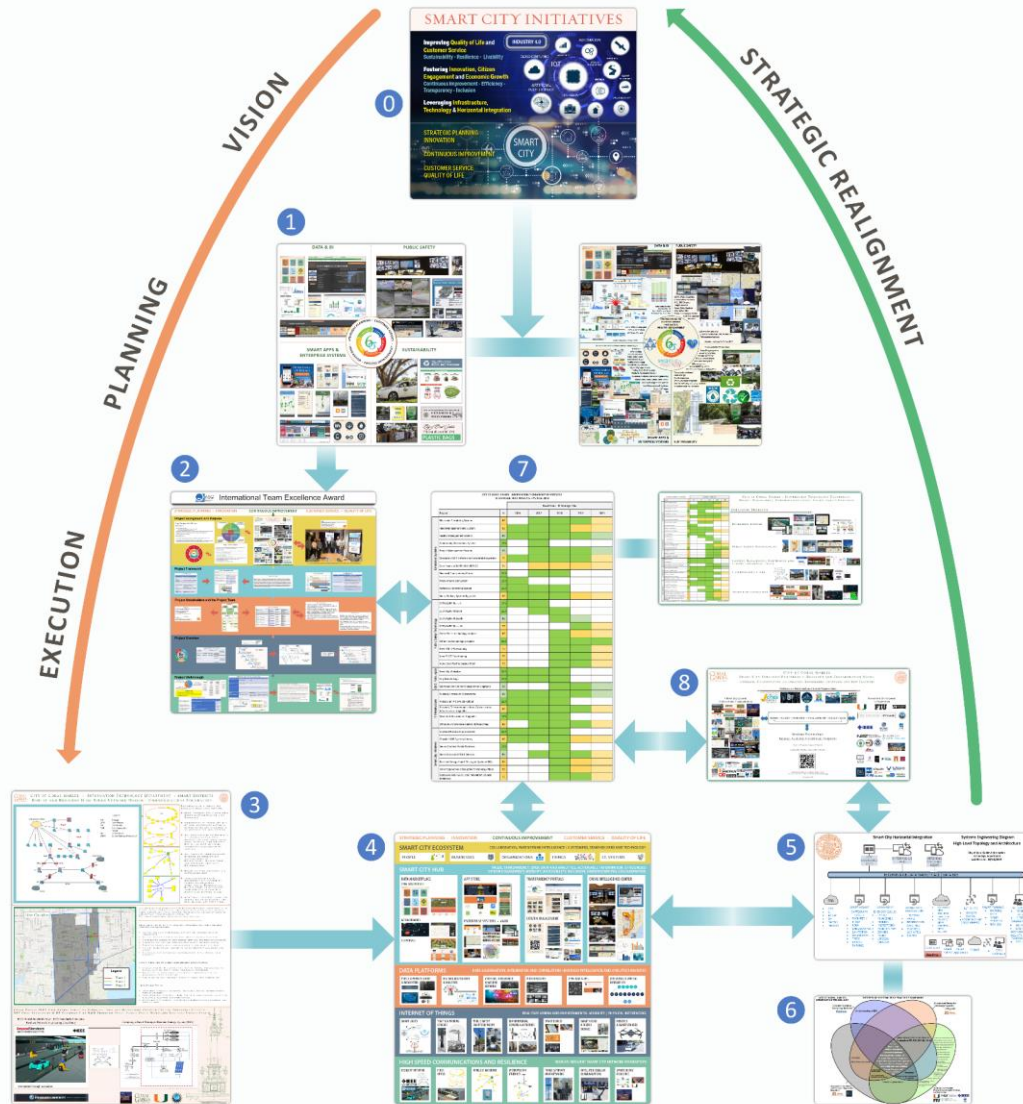
RAIMUNDO RODULFO, P.E., MSEM, PMP, CSSBB  
DIRECTOR OF INFORMATION TECHNOLOGY / CHIEF INNOVATION OFFICER

MAY 2021

**CORAL  
GABLES**®  
THE CITY BEAUTIFUL







- 0. Coral Gables Industry 4.0/Quality 4.0 Smart City Vision
- 1. Smart City Strategic Focus Areas Chart
- 2. CGIT Quality Engineering & Process Improvement Framework
- 3. Robust and Resilient High-Speed Network Design
- 4. Coral Gables Smart City Engineering Framework
- 5. Smart City Interoperability Systems Engineering Model
- 6. CGIT Enterprise Systems Best Practice Framework
- 7. Strategic Project Portfolio Management Framework
- 8. Coral Gables Smart City Strategic Partnership, Research & Collaboration Model



## Smart City Strategic Management Framework Architecture

Sustainability, Resilience, Workability, Livability → **Mission-Driven Alignment**

**Continuous Improvement of Customer Service and Quality of Life**

**Fostering Innovation, Digital Inclusion, Citizen Engagement, Economic Growth**

Synergy, Agility, Composability, Visibility, Hyper-Connectivity

- 0. Industry 4.0 / Quality 4.0 Smart City Vision**  
Exponential Quality → Safe, Resilient & Productive Communities
- 1. Smart City Strategic Focus Areas Chart**  
Applied STEM → Holistic Strategies, Focus on Service, Quality of Life – **Strategic Alignment**
- 2. Quality Engineering & Process Improvement Framework**  
Total Quality Management → Industry Best Practices, Efficiencies – **Customer Satisfaction**
- 3. Robust and Resilient High-Speed Network Design**  
Robust and Resilient Foundation → Engineering for Hyper-connectivity and Capacity
- 4. Smart City Engineering Framework**  
Value-Driven Cyberinfrastructure Stack → Multi-layered Presence, Value & Trust for the Smart City Ecosystem
- 5. Smart City Interoperability Systems Engineering Model**  
Complex, Data Rich Environment → Cohesive Governance and **Service Delivery Strategies**
- 6. Enterprise Systems Best Practice Framework**  
Digital Transformation and IIoT → **Enterprise Business Capabilities**
- 7. Strategic Project Portfolio Management Framework**  
Smart City Project Alignment → In-depth Planning and Integration  
**Full-cycle Management**: Idea/Plan/Design/Production
- 8. Strategic Partnership, Research & Collaboration Model**  
Smart City Solutions → **Synergetic Approach**, Continuous Learning and Cross-pollination  
Developing and Organically Growing a Smart City Ecosystem that Fosters Innovation



## SMART CITY INITIATIVES



### Smart City Strategic Management Framework Architecture Sustainability, Resilience, Workability, Livability → **Mission-Driven Alignment**

#### Continuous Improvement of Customer Service and Quality of Life

Fostering Innovation, Digital Inclusion, Citizen Engagement, Economic Growth  
Synergy, Agility, Composability, Visibility, Hyper-Connectivity

0. **Industry 4.0 / Quality 4.0 Smart City Vision**  
Exponential Quality → Safe, Resilient & Productive Communities
1. **Smart City Strategic Focus Areas Chart**  
Applied STEM → Holistic Strategies, Focus on Service, Quality of Life – **Strategic Alignment**
2. **Quality Engineering & Process Improvement Framework**  
Total Quality Management → Industry Best Practices, Efficiencies – **Customer Satisfaction**
3. **Robust and Resilient High-Speed Network Design**  
Robust and Resilient Foundation → Engineering for Hyper-connectivity and Capacity
4. **Smart City Engineering Framework**  
Value-Driven Cyberinfrastructure Stack →  
Multi-layered Presence, Value & Trust for the Smart City Ecosystem
5. **Smart City Interoperability Systems Engineering Model**  
Complex, Data Rich Environment → Cohesive Governance and **Service Delivery Strategies**
6. **Enterprise Systems Best Practice Framework**  
Digital Transformation and IIoT → **Enterprise Business Capabilities**
7. **Strategic Project Portfolio Management Framework**  
Smart City Project Alignment → In-depth Planning and Integration  
**Full-cycle Management:** Idea/Plan/Design/Production
8. **Strategic Partnership, Research & Collaboration Model**  
Smart City Solutions → **Synergetic Approach**, Continuous Learning and Cross-pollination  
Developing and Organically Growing a Smart City Ecosystem that Fosters Innovation







# CITY OF CORAL GABLES SMART CITY FRAMEWORK ARCHITECTURE 8 INTERCONNECTED STRATEGIC MANAGEMENT FRAMEWORKS



VISION



STRATEGIC REALIGN

1



## Smart City Strategic Management Framework Architecture Sustainability, Resilience, Workability, Livability → **Mission-Driven Alignment**

**Continuous Improvement of Customer Service and Quality of Life**  
**Fostering Innovation, Digital Inclusion, Citizen Engagement, Economic Growth**  
Synergy, Agility, Composability, Visibility, Hyper-Connectivity

0. Industry 4.0 / Quality 4.0 Smart City Vision  
Exponential Quality → Safe, Resilient & Productive Communities
1. **Smart City Strategic Focus Areas Chart**  
Applied STEM → Holistic Strategies, Focus on Service, Quality of Life – **Strategic Alignment**
2. **Quality Engineering & Process Improvement Framework**  
Total Quality Management → Industry Best Practices, Efficiencies – **Customer Satisfaction**
3. **Robust and Resilient High-Speed Network Design**  
Robust and Resilient Foundation → Engineering for Hyper-connectivity and Capacity
4. **Smart City Engineering Framework**  
Value-Driven Cyberinfrastructure Stack → Multi-layered Presence, Value & Trust for the Smart City Ecosystem
5. **Smart City Interoperability Systems Engineering Model**  
Complex, Data Rich Environment → Cohesive Governance and **Service Delivery Strategies**
6. **Enterprise Systems Best Practice Framework**  
Digital Transformation and IIoT → **Enterprise Business Capabilities**
7. **Strategic Project Portfolio Management Framework**  
Smart City Project Alignment → In-depth Planning and Integration  
**Full-cycle Management:** Idea/Plan/Design/Production
8. **Strategic Partnership, Research & Collaboration Model**  
Smart City Solutions → **Synergetic Approach**, Continuous Learning and Cross-pollination  
Developing and Organically Growing a Smart City Ecosystem that Fosters Innovation

- 01 Coral Gables Industry 4.0/Quality 4.0 Smart City Vision
- 02 Smart City Strategic Focus Areas Chart
- 03 CGIT Quality Engineering & Process Improvement Framework
- 04 Robust and Resilient High-Speed Network Design
- 05 Coral Gables Smart City Engineering Framework

- 06 Smart City Interoperability Systems Engineering Model
- 07 CGIT Enterprise Systems Best Practice Framework
- 08 Strategic Project Portfolio Management Framework
- 09 Coral Gables Smart City Strategic Partnership, Research & Collaboration Model





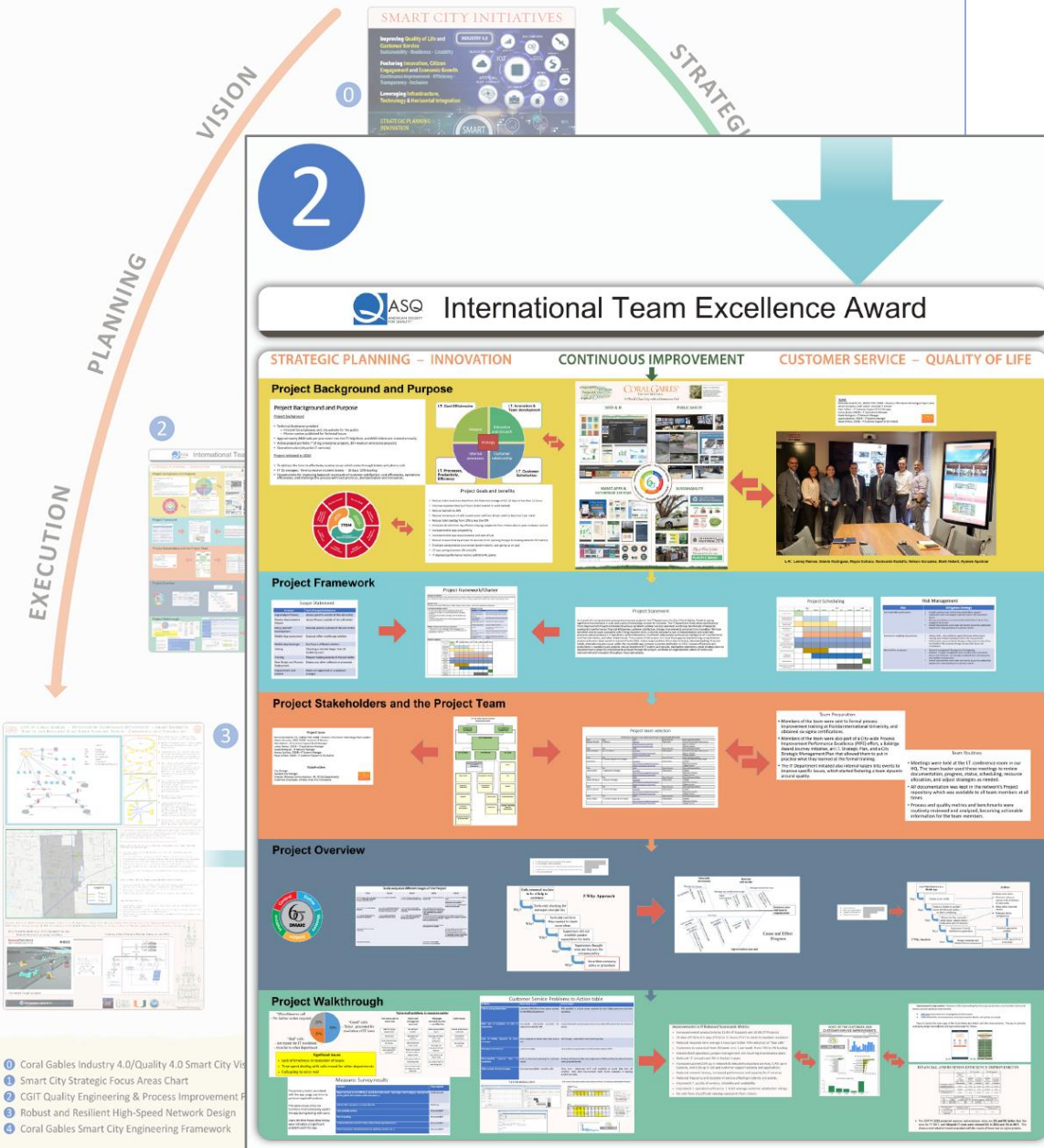


## Smart City Strategic Management Framework Architecture

Sustainability, Resilience, Workability, Livability → **Mission-Driven Alignment**

**Continuous Improvement of Customer Service and Quality of Life**  
**Fostering Innovation, Digital Inclusion, Citizen Engagement, Economic Growth**  
Synergy, Agility, Composability, Visibility, Hyper-Connectivity

- 0. Industry 4.0 / Quality 4.0 Smart City Vision**  
Exponential Quality → Safe, Resilient & Productive Communities
- 1. Smart City Strategic Focus Areas Chart**  
Applied STEM → Holistic Strategies, Focus on Service, Quality of Life – **Strategic Alignment**
- 2. Quality Engineering & Process Improvement Framework**  
Total Quality Management → Industry Best Practices, Efficiencies – **Customer Satisfaction**
- 3. Robust and Resilient High-Speed Network Design**  
Robust and Resilient Foundation → Engineering for Hyper-connectivity and Capacity
- 4. Smart City Engineering Framework**  
Value-Driven Cyberinfrastructure Stack → Multi-layered Presence, Value & Trust for the Smart City Ecosystem
- 5. Smart City Interoperability Systems Engineering Model**  
Complex, Data Rich Environment → Cohesive Governance and **Service Delivery Strategies**
- 6. Enterprise Systems Best Practice Framework**  
Digital Transformation and IIoT → **Enterprise Business Capabilities**
- 7. Strategic Project Portfolio Management Framework**  
Smart City Project Alignment → In-depth Planning and Integration  
**Full-cycle Management:** Idea/Plan/Design/Production
- 8. Strategic Partnership, Research & Collaboration Model**  
Smart City Solutions → **Synergetic Approach**, Continuous Learning and Cross-pollination  
Developing and Organically Growing a Smart City Ecosystem that Fosters Innovation







3

## Smart City Strategic Management Framework Architecture Sustainability, Resilience, Workability, Livability → **Mission-Driven Alignment**

### Continuous Improvement of Customer Service and Quality of Life

Fostering Innovation, Digital Inclusion, Citizen Engagement, Economic Growth  
Synergy, Agility, Composability, Visibility, Hyper-Connectivity

#### 0. Industry 4.0 / Quality 4.0 Smart City Vision

Exponential Quality → Safe, Resilient & Productive Communities

#### 1. Smart City Strategic Focus Areas Chart

Applied STEM → Holistic Strategies, Focus on Service, Quality of Life – **Strategic Alignment**

#### 2. Quality Engineering & Process Improvement Framework

Total Quality Management → Industry Best Practices, Efficiencies – **Customer Satisfaction**

#### 3. Robust and Resilient High-Speed Network Design

Robust and Resilient Foundation → Engineering for Hyper-connectivity and Capacity

#### 4. Smart City Engineering Framework

Value-Driven Cyberinfrastructure Stack →  
Multi-layered Presence, Value & Trust for the Smart City Ecosystem

#### 5. Smart City Interoperability Systems Engineering Model

Complex, Data Rich Environment → Cohesive Governance and **Service Delivery Strategies**

#### 6. Enterprise Systems Best Practice Framework

Digital Transformation and IIoT → **Enterprise Business Capabilities**

#### 7. Strategic Project Portfolio Management Framework

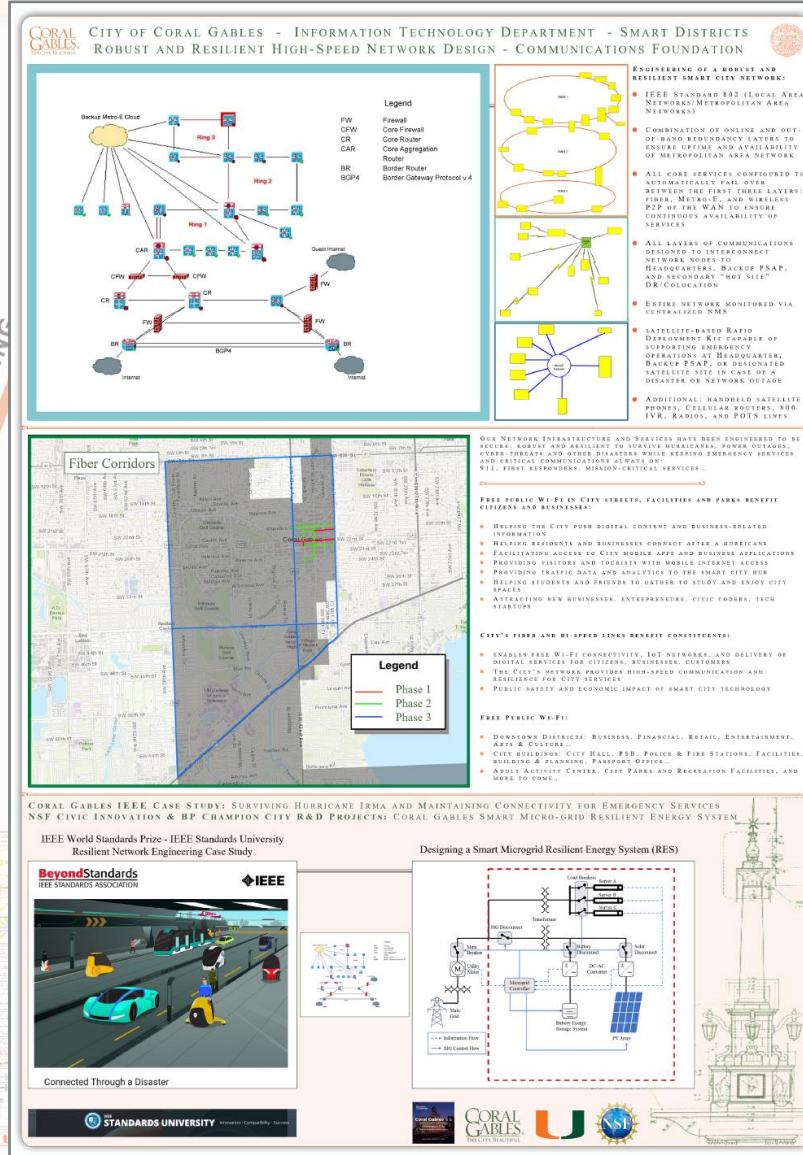
Smart City Project Alignment → In-depth Planning and Integration  
**Full-cycle Management:** Idea/Plan/Design/Production

#### 8. Strategic Partnership, Research & Collaboration Model

Smart City Solutions → **Synergetic Approach**, Continuous Learning and Cross-pollination  
Developing and Organically Growing a Smart City Ecosystem that Fosters Innovation

PLANNING

EXECUTION



1. Coral Gables Industry 4.0/Quality 4.0 Smart City Vision
2. Smart City Strategic Focus Areas Chart
3. CGIT Quality Engineering & Process Improvement Framework
4. Robust and Resilient High-Speed Network Design
5. Coral Gables Smart City Engineering Framework

6. Smart City Interoperability Systems Engineering Model
7. CGIT Enterprise Systems Best Practice Framework
8. Strategic Project Portfolio Management Framework
9. Coral Gables Smart City Strategic Partnership, Research & Collaboration Model







4



## Smart City Strategic Management Framework Architecture Sustainability, Resilience, Workability, Livability → **Mission-Driven Alignment**

### Continuous Improvement of Customer Service and Quality of Life

Fostering Innovation, Digital Inclusion, Citizen Engagement, Economic Growth  
Synergy, Agility, Composability, Visibility, Hyper-Connectivity

0. Industry 4.0 / Quality 4.0 Smart City Vision  
Exponential Quality → Safe, Resilient & Productive Communities
1. Smart City Strategic Focus Areas Chart  
Applied STEM → Holistic Strategies, Focus on Service, Quality of Life – **Strategic Alignment**
2. Quality Engineering & Process Improvement Framework  
Total Quality Management → Industry Best Practices, Efficiencies – **Customer Satisfaction**
3. Robust and Resilient High-Speed Network Design  
Robust and Resilient Foundation → Engineering for Hyper-connectivity and Capacity
4. **Smart City Engineering Framework**  
Value-Driven Cyberinfrastructure Stack →  
Multi-layered Presence, Value & Trust for the Smart City Ecosystem
5. Smart City Interoperability Systems Engineering Model  
Complex, Data Rich Environment → Cohesive Governance and **Service Delivery Strategies**
6. Enterprise Systems Best Practice Framework  
Digital Transformation and IIoT → **Enterprise Business Capabilities**
7. Strategic Project Portfolio Management Framework  
Smart City Project Alignment → In-depth Planning and Integration  
**Full-cycle Management:** Idea/Plan/Design/Production
8. Strategic Partnership, Research & Collaboration Model  
Smart City Solutions → **Synergetic Approach**, Continuous Learning and Cross-pollination  
Developing and Organically Growing a Smart City Ecosystem that Fosters Innovation

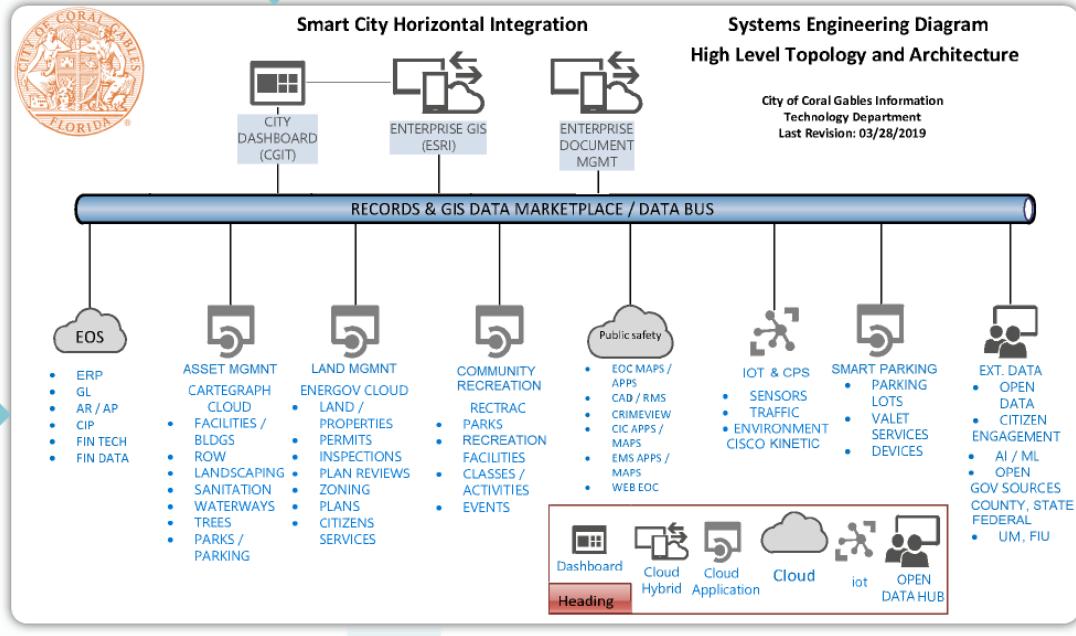




# CITY OF CORAL GABLES SMART CITY FRAMEWORK ARCHITECTURE 8 INTERCONNECTED STRATEGIC MANAGEMENT FRAMEWORKS



5



## Smart City Strategic Management Framework Architecture Sustainability, Resilience, Workability, Livability → **Mission-Driven Alignment**

**Continuous Improvement of Customer Service and Quality of Life**  
**Fostering Innovation, Digital Inclusion, Citizen Engagement, Economic Growth**  
Synergy, Agility, Composability, Visibility, Hyper-Connectivity

0. **Industry 4.0 / Quality 4.0 Smart City Vision**  
Exponential Quality → Safe, Resilient & Productive Communities
1. **Smart City Strategic Focus Areas Chart**  
Applied STEM → Holistic Strategies, Focus on Service, Quality of Life – **Strategic Alignment**
2. **Quality Engineering & Process Improvement Framework**  
Total Quality Management → Industry Best Practices, Efficiencies – **Customer Satisfaction**
3. **Robust and Resilient High-Speed Network Design**  
Robust and Resilient Foundation → Engineering for Hyper-connectivity and Capacity
4. **Smart City Engineering Framework**  
Value-Driven Cyberinfrastructure Stack → Multi-layered Presence, Value & Trust for the Smart City Ecosystem
5. **Smart City Interoperability Systems Engineering Model**  
Complex, Data Rich Environment → Cohesive Governance and **Service Delivery Strategies**
6. **Enterprise Systems Best Practice Framework**  
Digital Transformation and IIoT → **Enterprise Business Capabilities**
7. **Strategic Project Portfolio Management Framework**  
Smart City Project Alignment → In-depth Planning and Integration  
**Full-cycle Management:** Idea/Plan/Design/Production
8. **Strategic Partnership, Research & Collaboration Model**  
Smart City Solutions → **Synergetic Approach**, Continuous Learning and Cross-pollination  
Developing and Organically Growing a Smart City Ecosystem that Fosters Innovation



1. Coral Gables Industry 4.0/Quality 4.0 Smart City Vision
2. Smart City Strategic Focus Areas Chart
3. CGIT Quality Engineering & Process Improvement Framework
4. Robust and Resilient High-Speed Network Design
5. Coral Gables Smart City Engineering Framework

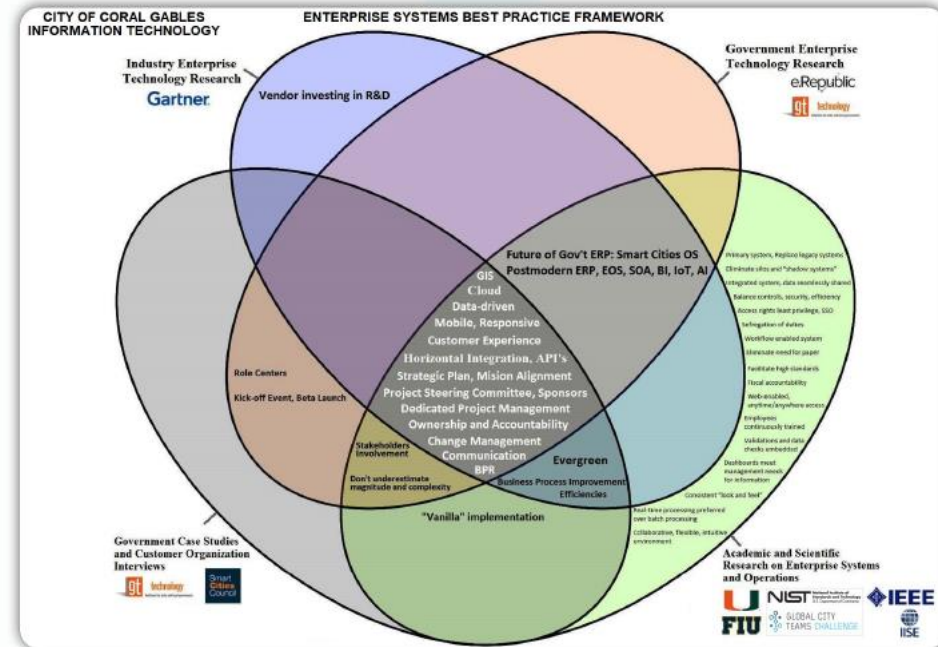
6. Smart City Interoperability Systems Engineering Model
7. CGIT Enterprise Systems Best Practice Framework
8. Strategic Project Portfolio Management Framework
9. Coral Gables Smart City Strategic Partnership, Research & Collaboration Model







6



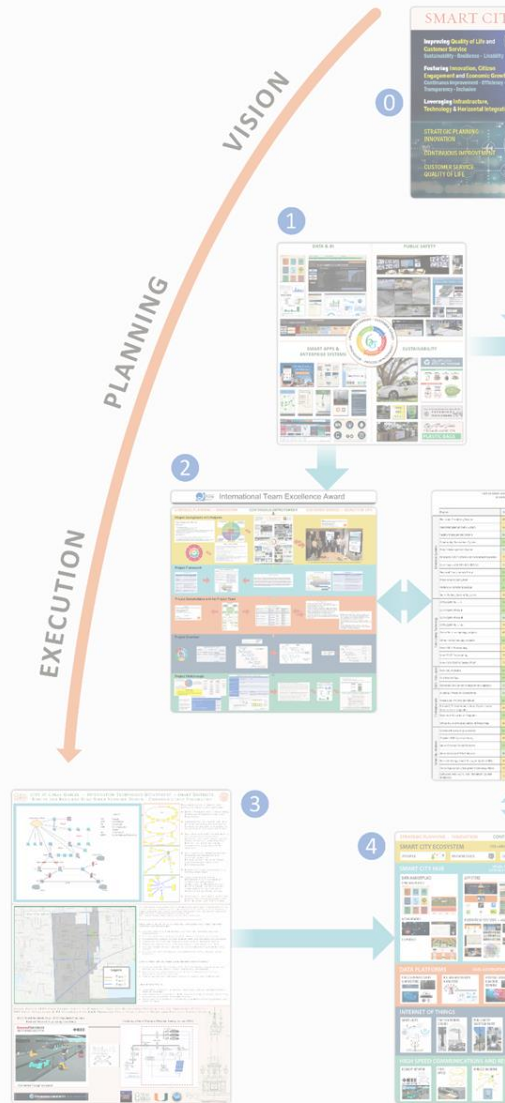
## Smart City Strategic Management Framework Architecture

### Sustainability, Resilience, Workability, Livability → **Mission-Driven Alignment**

**Continuous Improvement of Customer Service and Quality of Life**  
**Fostering Innovation, Digital Inclusion, Citizen Engagement, Economic Growth**  
Synergy, Agility, Composability, Visibility, Hyper-Connectivity

- 0. Industry 4.0 / Quality 4.0 Smart City Vision**  
Exponential Quality → Safe, Resilient & Productive Communities
- 1. Smart City Strategic Focus Areas Chart**  
Applied STEM → Holistic Strategies, Focus on Service, Quality of Life – **Strategic Alignment**
- 2. Quality Engineering & Process Improvement Framework**  
Total Quality Management → Industry Best Practices, Efficiencies – **Customer Satisfaction**
- 3. Robust and Resilient High-Speed Network Design**  
Robust and Resilient Foundation → Engineering for Hyper-connectivity and Capacity
- 4. Smart City Engineering Framework**  
Value-Driven Cyberinfrastructure Stack →  
Multi-layered Presence, Value & Trust for the Smart City Ecosystem
- 5. Smart City Interoperability Systems Engineering Model**  
Complex, Data Rich Environment → Cohesive Governance and **Service Delivery Strategies**
- 6. Enterprise Systems Best Practice Framework**  
Digital Transformation and IIoT → **Enterprise Business Capabilities**
- 7. Strategic Project Portfolio Management Framework**  
Smart City Project Alignment → In-depth Planning and Integration  
**Full-cycle Management:** Idea/Plan/Design/Production
- 8. Strategic Partnership, Research & Collaboration Model**  
Smart City Solutions → **Synergetic Approach**, Continuous Learning and Cross-pollination  
Developing and Organically Growing a Smart City Ecosystem that Fosters Innovation





1. Coral Gables Industry 4.0/Quality 4.0 Smart City Vision
2. Smart City Strategic Focus Areas Chart
3. CGIT Quality Engineering & Process Improvement Framework
4. Robust and Resilient High-Speed Network Design
5. Coral Gables Smart City Engineering Framework

6. Smart City Interoperability Systems Engineering Model
7. CGIT Enterprise Systems Best Practice Framework
8. Strategic Project Portfolio Management Framework
9. Coral Gables Smart City Strategic Partnership, Research & Collaboration Model



7

CITY OF CORAL GABLES - INFORMATION TECHNOLOGY DEPARTMENT IT STRATEGIC PLAN PROJECTS, FY'S 2016-2020		Fiscal Years - IT Strategic Plan				
Project	%	2016	2017	2018	2019	2020
<b>Enterprise Systems</b>						
Electronic Permitting System	60					
Fleet Management GPS System	60					
Facility Management System	90					
Community Recreations System	100					
Project Management System	90					
Enterprise GIS Platform and horizontal integration	75					
Core Financial & HR EBC/ERP/EOS	15					
Financial Transparency Portal	100					
Procurement Bid System	100					
Parking e-Permitting System	100					
Smart Parking System Upgrades	40					
<b>Public Safety Technology</b>						
CCTV/ALPR Phase I	100					
CCTV/ALPR Phase II	100					
CCTV/ALPR Phase III	90					
CCTV/ALPR Phase IV	75					
Other Police technology projects	60					
Other Fire technology projects	100					
New PSB IT Provisioning	75					
New FS2 IT Provisioning	75					
New e911 PSAP & Backup PSAP	75					
<b>City Web Apps</b>						
New City Websites	100					
City Mobile Apps	100					
<b>IT Infrastructure</b>						
Electronic Document Management Upgrades	90					
Public & Private Wi-Fi Networks	90					
Voice over IP Citywide Rollout	100					
Network, Telecommunications, Cybersecurity Infrastructure Upgrades	80					
Systems Infrastructure Upgrades	100					
Office 365 Citywide & Central BI/Reporting	80					
Citywide Process Improvement	100					
<b>Smart City Initiatives</b>						
Citywide SOP System/Library	60					
Smart City Hub Public Platform	100					
Smart Districts CPS IoT Sensors	90					
Resilient Energy Smart Microgrid System (RES)	30					
Other Exponential/Disruptive Technology Pilots	50					
DataGovs, NIST GCTC, and Innovation Council Initiatives	75					

## Smart City Strategic Management Framework Architecture

Sustainability, Resilience, Workability, Livability → **Mission-Driven Alignment**

**Continuous Improvement of Customer Service and Quality of Life**

**Fostering Innovation, Digital Inclusion, Citizen Engagement, Economic Growth**

Synergy, Agility, Composability, Visibility, Hyper-Connectivity

### 0. Industry 4.0 / Quality 4.0 Smart City Vision

Exponential Quality → Safe, Resilient & Productive Communities

### 1. Smart City Strategic Focus Areas Chart

Applied STEM → Holistic Strategies, Focus on Service, Quality of Life – **Strategic Alignment**

### 2. Quality Engineering & Process Improvement Framework

Total Quality Management → Industry Best Practices, Efficiencies – **Customer Satisfaction**

### 3. Robust and Resilient High-Speed Network Design

Robust and Resilient Foundation → Engineering for Hyper-connectivity and Capacity

### 4. Smart City Engineering Framework

Value-Driven Cyberinfrastructure Stack →

Multi-layered Presence, Value & Trust for the Smart City Ecosystem

### 5. Smart City Interoperability Systems Engineering Model

Complex, Data Rich Environment → Cohesive Governance and **Service Delivery Strategies**

### 6. Enterprise Systems Best Practice Framework

Digital Transformation and IIoT → **Enterprise Business Capabilities**

### 7. Strategic Project Portfolio Management Framework

Smart City Project Alignment → In-depth Planning and Integration

**Full-cycle Management:** Idea/Plan/Design/Production

### 8. Strategic Partnership, Research & Collaboration Model

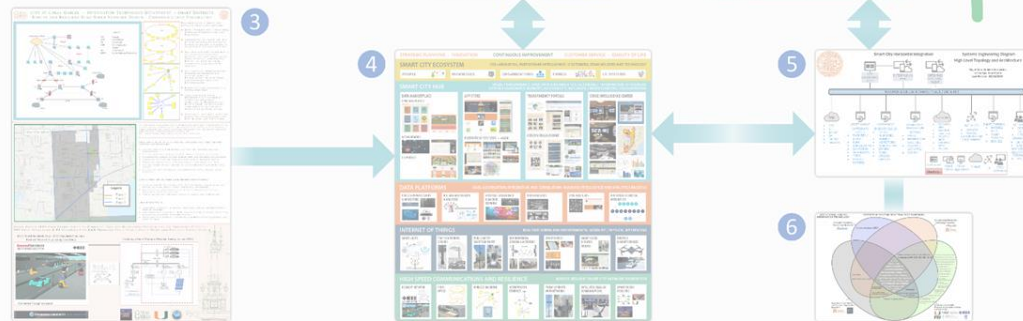
Smart City Solutions → **Synergetic Approach**, Continuous Learning and Cross-pollination

Developing and Organically Growing a Smart City Ecosystem that Fosters Innovation





8



1. Coral Gables Industry 4.0/Quality 4.0 Smart City Vision
2. Smart City Strategic Focus Areas Chart
3. CGIT Quality Engineering & Process Improvement Framework
4. Robust and Resilient High-Speed Network Design
5. Coral Gables Smart City Engineering Framework

6. Smart City Interoperability Systems Engineering Model
7. CGIT Enterprise Systems Best Practice Framework
8. Strategic Project Portfolio Management Framework
9. Coral Gables Smart City Strategic Partnership, Research & Collaboration Model



## Smart City Strategic Management Framework Architecture

Sustainability, Resilience, Workability, Livability → **Mission-Driven Alignment**

**Continuous Improvement of Customer Service and Quality of Life**

**Fostering Innovation, Digital Inclusion, Citizen Engagement, Economic Growth**

Synergy, Agility, Composability, Visibility, Hyper-Connectivity

### 0. Industry 4.0 / Quality 4.0 Smart City Vision

Exponential Quality → Safe, Resilient & Productive Communities

### 1. Smart City Strategic Focus Areas Chart

Applied STEM → Holistic Strategies, Focus on Service, Quality of Life – **Strategic Alignment**

### 2. Quality Engineering & Process Improvement Framework

Total Quality Management → Industry Best Practices, Efficiencies – **Customer Satisfaction**

### 3. Robust and Resilient High-Speed Network Design

Robust and Resilient Foundation → Engineering for Hyper-connectivity and Capacity

### 4. Smart City Engineering Framework

Value-Driven Cyberinfrastructure Stack →

Multi-layered Presence, Value & Trust for the Smart City Ecosystem

### 5. Smart City Interoperability Systems Engineering Model

Complex, Data Rich Environment → Cohesive Governance and **Service Delivery Strategies**

### 6. Enterprise Systems Best Practice Framework

Digital Transformation and IIoT → **Enterprise Business Capabilities**

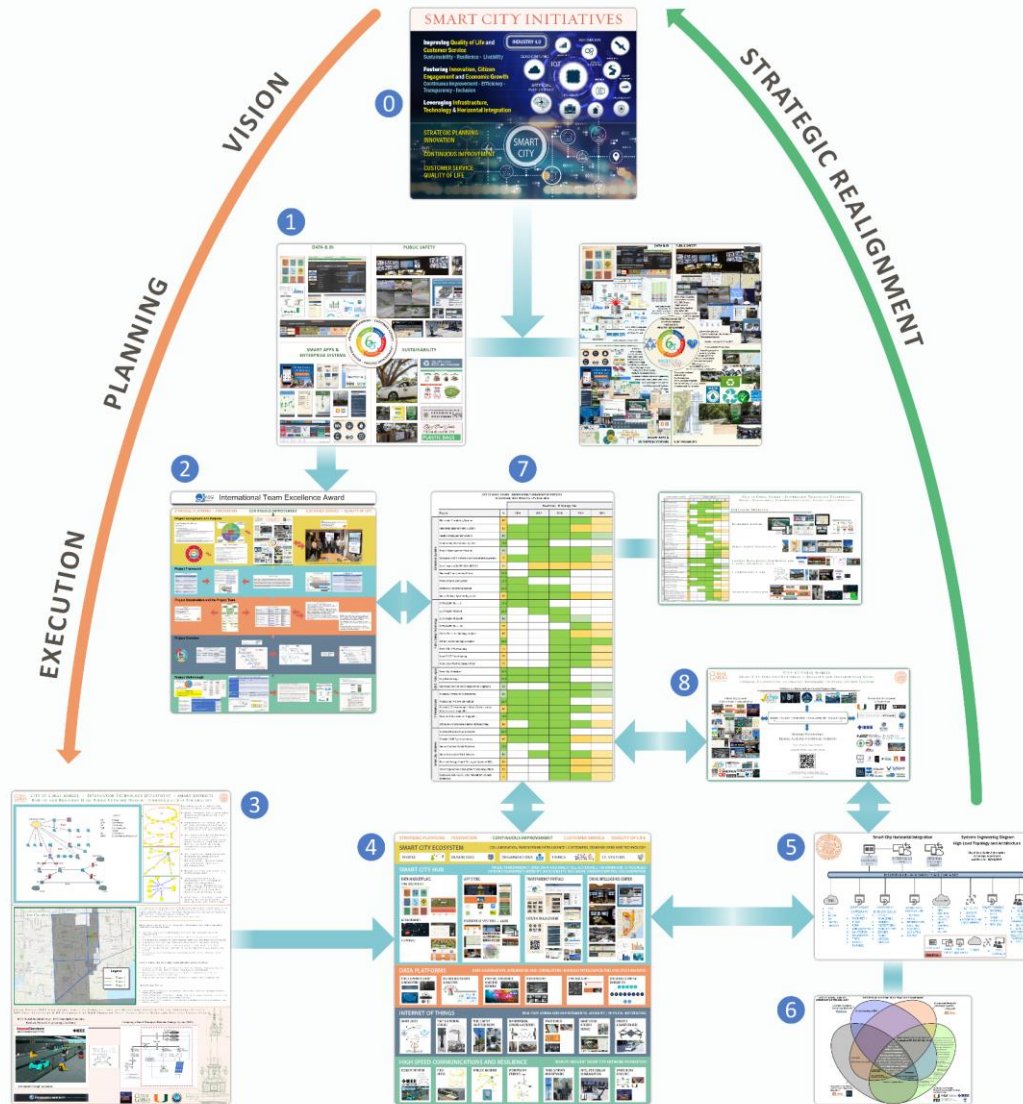
### 7. Strategic Project Portfolio Management Framework

Smart City Project Alignment → In-depth Planning and Integration

**Full-cycle Management:** Idea/Plan/Design/Production

### 8. Strategic Partnership, Research & Collaboration Model

Smart City Solutions → **Synergetic Approach**, Continuous Learning and Cross-pollination  
Developing and Organically Growing a Smart City Ecosystem that Fosters Innovation



- 0. Coral Gables Industry 4.0/Quality 4.0 Smart City Vision
- 1. Smart City Strategic Focus Areas Chart
- 2. CGIT Quality Engineering & Process Improvement Framework
- 3. Robust and Resilient High-Speed Network Design
- 4. Coral Gables Smart City Engineering Framework
- 5. Smart City Interoperability Systems Engineering Model
- 6. CGIT Enterprise Systems Best Practice Framework
- 7. Strategic Project Portfolio Management Framework
- 8. Coral Gables Smart City Strategic Partnership, Research & Collaboration Model



## Smart City Strategic Management Framework Architecture

### Sustainability, Resilience, Workability, Livability → **Mission-Driven Alignment**

**Continuous Improvement of Customer Service and Quality of Life**  
**Fostering Innovation, Digital Inclusion, Citizen Engagement, Economic Growth**  
Synergy, Agility, Composability, Visibility, Hyper-Connectivity

- 0. Industry 4.0 / Quality 4.0 Smart City Vision**  
Exponential Quality → Safe, Resilient & Productive Communities
- 1. Smart City Strategic Focus Areas Chart**  
Applied STEM → Holistic Strategies, Focus on Service, Quality of Life – **Strategic Alignment**
- 2. Quality Engineering & Process Improvement Framework**  
Total Quality Management → Industry Best Practices, Efficiencies – **Customer Satisfaction**
- 3. Robust and Resilient High-Speed Network Design**  
Robust and Resilient Foundation → Engineering for Hyper-connectivity and Capacity
- 4. Smart City Engineering Framework**  
Value-Driven Cyberinfrastructure Stack → Multi-layered Presence, Value & Trust for the Smart City Ecosystem
- 5. Smart City Interoperability Systems Engineering Model**  
Complex, Data Rich Environment → Cohesive Governance and **Service Delivery Strategies**
- 6. Enterprise Systems Best Practice Framework**  
Digital Transformation and IIoT → **Enterprise Business Capabilities**
- 7. Strategic Project Portfolio Management Framework**  
Smart City Project Alignment → In-depth Planning and Integration  
**Full-cycle Management**: Idea/Plan/Design/Production
- 8. Strategic Partnership, Research & Collaboration Model**  
Smart City Solutions → **Synergetic Approach**, Continuous Learning and Cross-pollination  
Developing and Organically Growing a Smart City Ecosystem that Fosters Innovation



# CITY OF CORAL GABLES INFORMATION TECHNOLOGY DEPARTMENT

## SMART CITY ALIGNMENT, STRATEGIC PLANNING, ENGINEERING & DESIGN

**CORAL GABLES**  
THE CITY BEAUTIFUL  
A World Class City with a Hometown Feel

**SMART CITY INITIATIVES**  
Six Sigma Process Improvement  
Data Science & Business Intelligence  
Public Safety Team Initiatives  
Sustainability Master Plan  
Smart Apps & Enterprise Systems

**DATA & BI**  
EARS Applications Dashboard  
EARS Dashboard

**PUBLIC SAFETY**  
Stolen Vehicle or Vehicle  
CRIME VIEW Dashboard

**SMART APPS & ENTERPRISE SYSTEMS**  
CORAL GABLES ON THE GO  
Coral Gables City Hall

**SUSTAINABILITY**  
City of Coral Gables RECYCLING PROGRAM  
EXPANDED POLYSTYRENE  
City of Coral Gables PROHIBITION ON PLASTIC BAGS

**STRATEGIC PLANNING • CUSTOMER SERVICE**  
**INNOVATION • PROCESS IMPROVEMENT**

Visit the City of Coral Gables Web Site:  
[www.coralgables.com](http://www.coralgables.com)

Like us on Facebook  
Facebook.com/cityofcoralgables

Coral Gables City Hall • 405 Biltmore Way, Coral Gables, FL 33134 • 305-446-6800

**CORAL GABLES**  
THE CITY BEAUTIFUL  
A World Class City with a Hometown Feel

**SMART DISTRICT PROJECTS**

**STRATEGIC PLANNING – INNOVATION**   **CONTINUOUS IMPROVEMENT**   **CUSTOMER SERVICE – QUALITY OF LIFE**

**SMART CITY ECOSYSTEM**   COLLABORATION, PARTNERSHIP, INTELLIGENCE / CUSTOMERS, STAKEHOLDERS AND TECHNOLOGY

**PEOPLE**   **BUSINESSES**   **ORGANIZATIONS**   **THINGS**   **I.T. SYSTEMS**

**SMART CITY HUB**   VALUE, TRANSPARENCY, OPEN DATA AND ANALYTICS, ACTIONABLE INFORMATION, EFFICIENCIES  
CITIZEN ENGAGEMENT, MOBILITY, ACCESSIBILITY, INCLUSION, CROWDSOURCING, COLLABORATION

**DATA MARKETPLACE**   **APP STORE**   **TRANSPARENCY PORTALS**   **CRIME INTELLIGENCE CENTER**

**DATA PLATFORMS**   DATA AGGREGATION, INTEGRATION AND CORRELATION / BUSINESS INTELLIGENCE AND ANALYTICS BACKEND

**INTERNET OF THINGS**   REAL-TIME URBAN AND ENVIRONMENTAL VISIBILITY / PHYSICAL INTERFACING

**HIGH SPEED COMMUNICATIONS AND RESILIENCE**   ROBUST, RESILIENT SMART CITY NETWORK FOUNDATION

Visit the City of Coral Gables website:  
[www.CoralGables.com](http://www.CoralGables.com)

like us: Facebook.com/cityofcoralgables  
follow us on Twitter: @CityCoralGables

More information: visit [www.coralgables.com/IT](http://www.coralgables.com/IT) and [www.coralgables.com/SmartCity](http://www.coralgables.com/SmartCity)

Coral Gables City Hall • 405 Biltmore Way, Coral Gables FL 33134 • 305-446-6800

Our smart city plan implements **several interconnected and interoperable elements** that include:

- A Smart City Hub
- Data Platforms
- Internet of Things
- Horizontal Integration
- A robust and resilient technology infrastructure with high-speed communications.
- Smart Mobility Technology, Cyberphysical Infrastructure, Citizen Services, and hyper-connectivity.

# CITY OF CORAL GABLES - INFORMATION TECHNOLOGY DEPARTMENT

## PROJECT MANAGEMENT, CYBERINFRASTRUCTURE, DIGITAL EQUITY PORTFOLIO

CITY OF CORAL GABLES - INFORMATION TECHNOLOGY DEPARTMENT  
IT STRATEGIC PLAN PROJECTS, FY's 2016-2020

		Fiscal Years - IT Strategic Plan				
Project	%	2016	2017	2018	2019	2020
Enterprise Systems	Electronic Permitting System	60				
	Fleet Management GPS System	60				
	Facility Management System	90				
	Community Recreations System	100				
	Project Management System	90				
	Enterprise GIS Platform and horizontal integration	75				
	Core Financial & HR EBC/ERP/EOS	15				
	Financial Transparency Portal	100				
	Procurement Bid System	100				
	Parking e-Permitting System	100				
	Smart Parking System Upgrades	40				
Public Safety Technology	CCTV/ALPR Phase I	100				
	CCTV/ALPR Phase II	100				
	CCTV/ALPR Phase III	90				
	CCTV/ALPR Phase IV	75				
	Other Police technology projects	60				
	Other Fire technology projects	100				
	New PSB IT Provisioning	75				
	New FS2 IT Provisioning	75				
CMS, Web, Apps	New City Websites	100				
	City Mobile Apps	100				
	Electronic Document Management Upgrades	90				
IT Infrastructure	Public & Private Wi-Fi Networks	90				
	Voice over IP Citywide Rollout	100				
	Network, Telecommunications, Cybersecurity Infrastructure Upgrades	80				
	Systems Infrastructure Upgrades	100				
	Office 365 Citywide & Central BI/Reporting	80				
Smart City Initiatives	Citywide Process Improvement	100				
	Citywide SOP System/Library	60				
	Smart City Hub Public Platform	100				
	Smart Districts CPS IoT Sensors	90				
	Resilient Energy Smart Microgrid System (RES)	30				
	Other Exponential/Disruptive Technology Pilots	50				
	DataGovs, NIST GCTC, and Innovation Council Initiatives	75				

## STRATEGIC PROJECTS

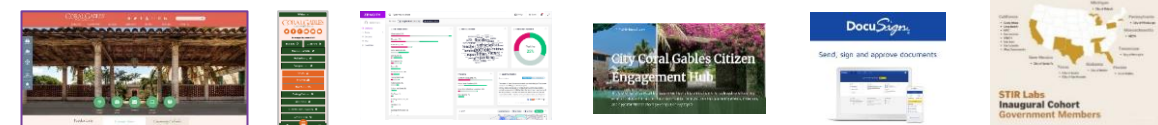
### ENTERPRISE SYSTEMS



### PUBLIC SAFETY TECHNOLOGIES



### CONTENT MANAGEMENT, WEB/MOBILE APPS, DXP, CITIZEN ENGAGEMENT/UX



### CYBERINFRASTRUCTURE



### SMART CITY INITIATIVES



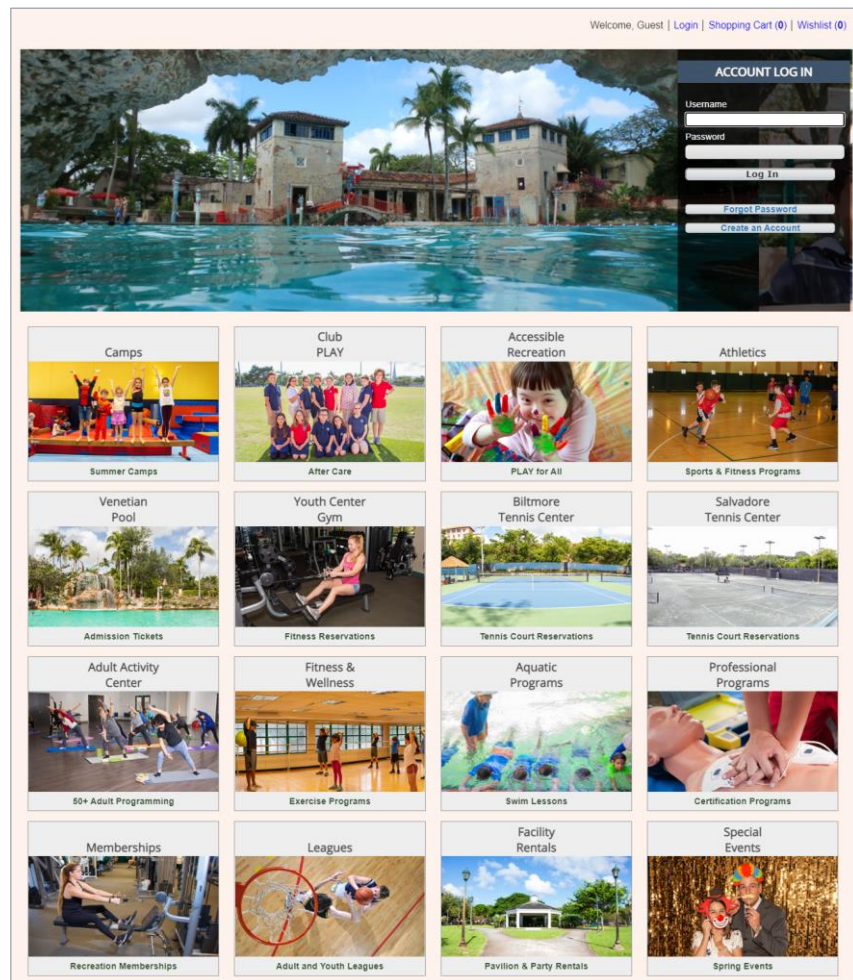


**ENTERPRISE SYSTEMS – DIGITAL TRANSFORMATION – EFFICIENCIES – PAPERLESS PROCESSES**

**RECTRAC** – COMMUNITY RECREATION PROGRAMS, CLASSES, PROGRAMS, BOOKING, REGISTRATIONS

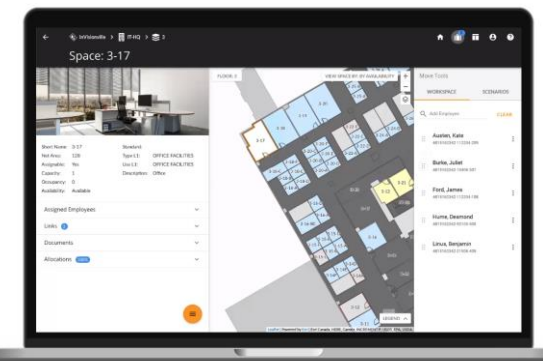
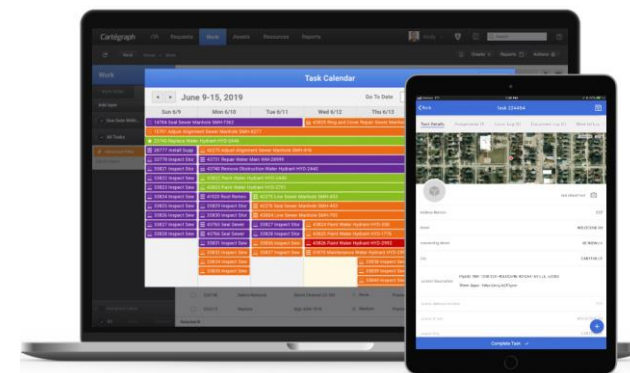
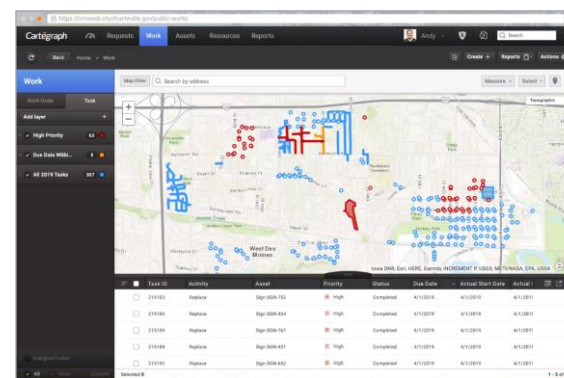
**CARTEGRAPH** – ENTERPRISE ASSET MANAGEMENT, OPERATIONS MANAGEMENT, FACILITIES, RIGHT OF WAY, SANITATION, LANDSCAPING, UTILITIES, PARKS FACILITIES, PROPERTIES

## RECTRAC – WENT LIVE IN 2017



## CARTEGRAPH CLOUD SUITE

- FACILITY MANAGEMENT: WENT LIVE IN 2018
  - LANDSCAPING, TREES, SANITATION: WENT LIVE IN 2019
  - UTILITIES: WENT LIVE IN 2020
  - COMMUNITY RECREATION / PARKS : WENT LIVE IN 2021
- NEW: PROPERTY MANAGEMENT: STARTS FY'21, GO-LIVE FY'22



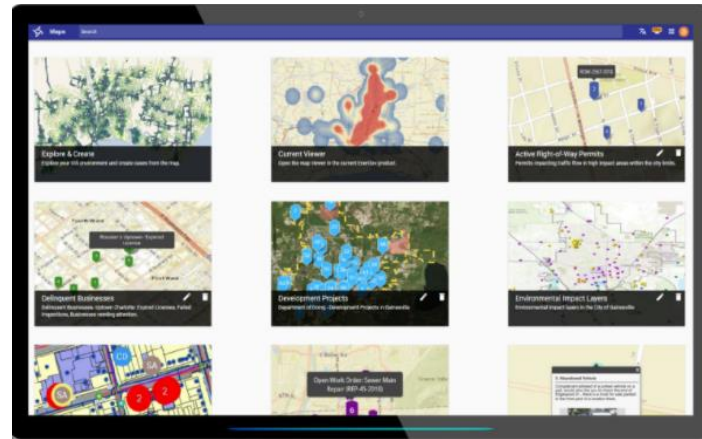
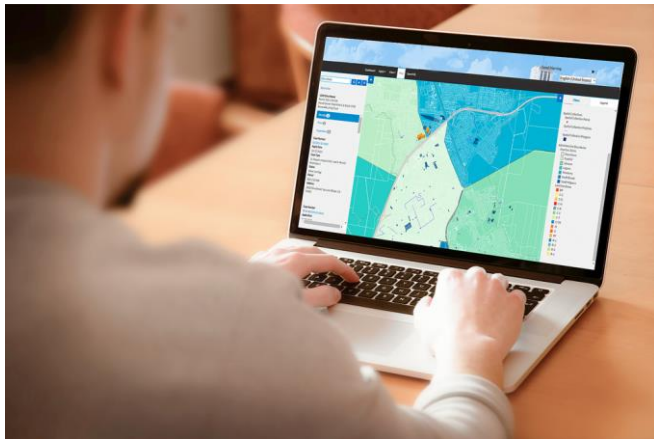
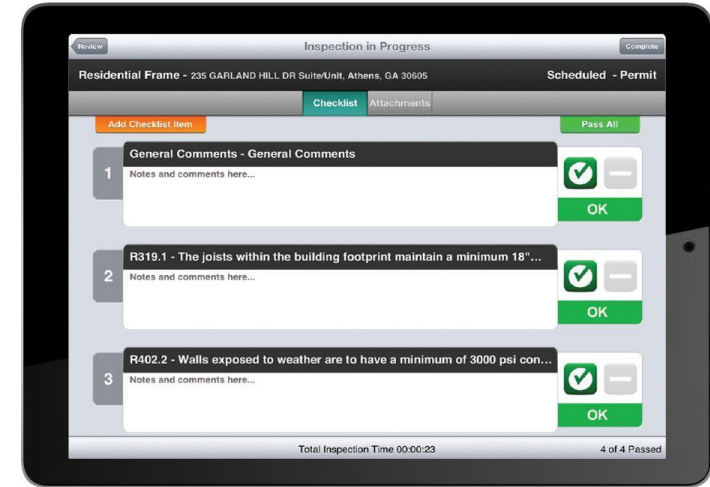
## CITY OF CORAL GABLES

### ENTERPRISE SYSTEMS – DIGITAL TRANSFORMATION – EFFICIENCIES – PAPERLESS PROCESSES

#### **ENERGOV** – ELECTRONIC PERMIT / PLAN REVIEW / LAND MANAGEMENT / LICENSING AT IMPLEMENTATION PHASE (GO-LIVE IN 2021)

2

2



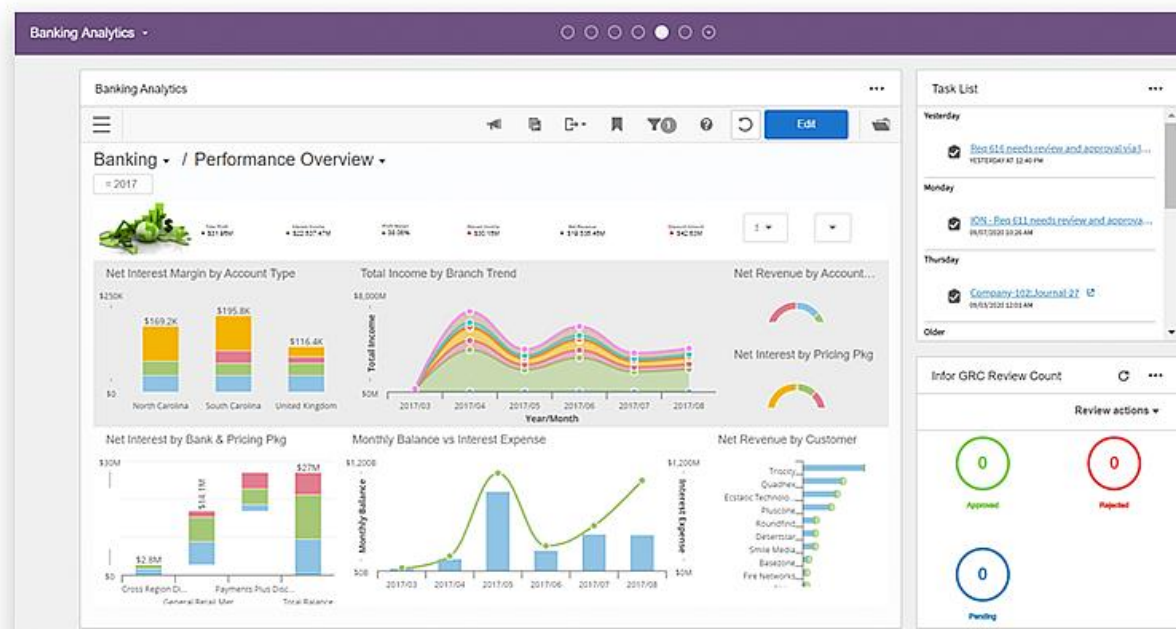
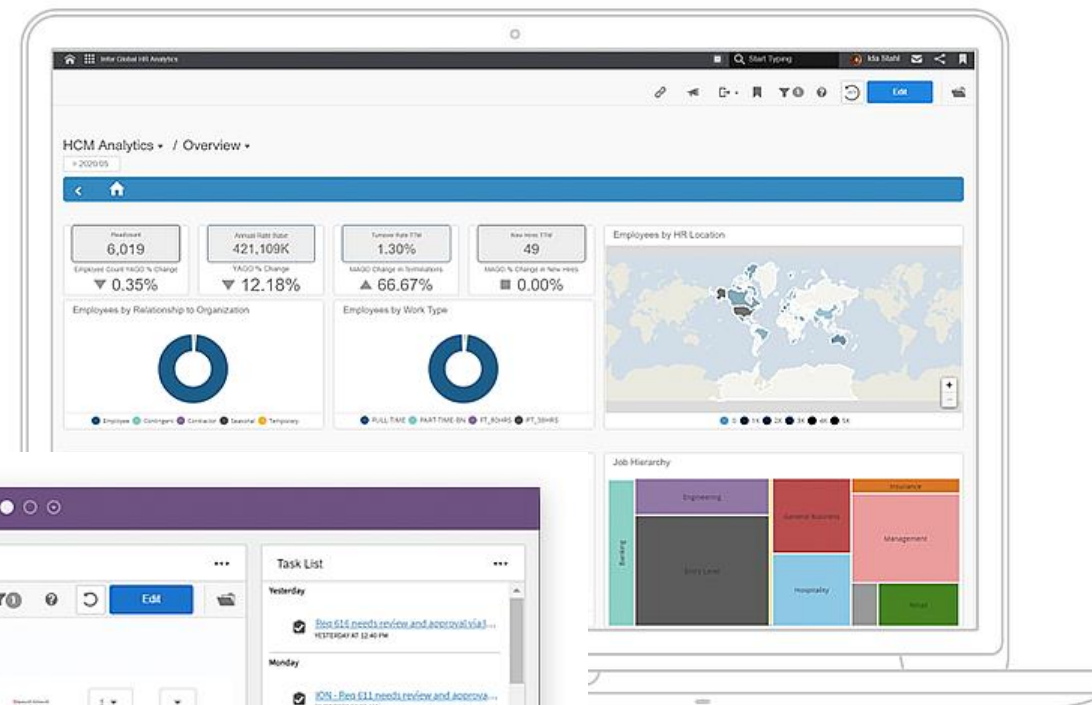
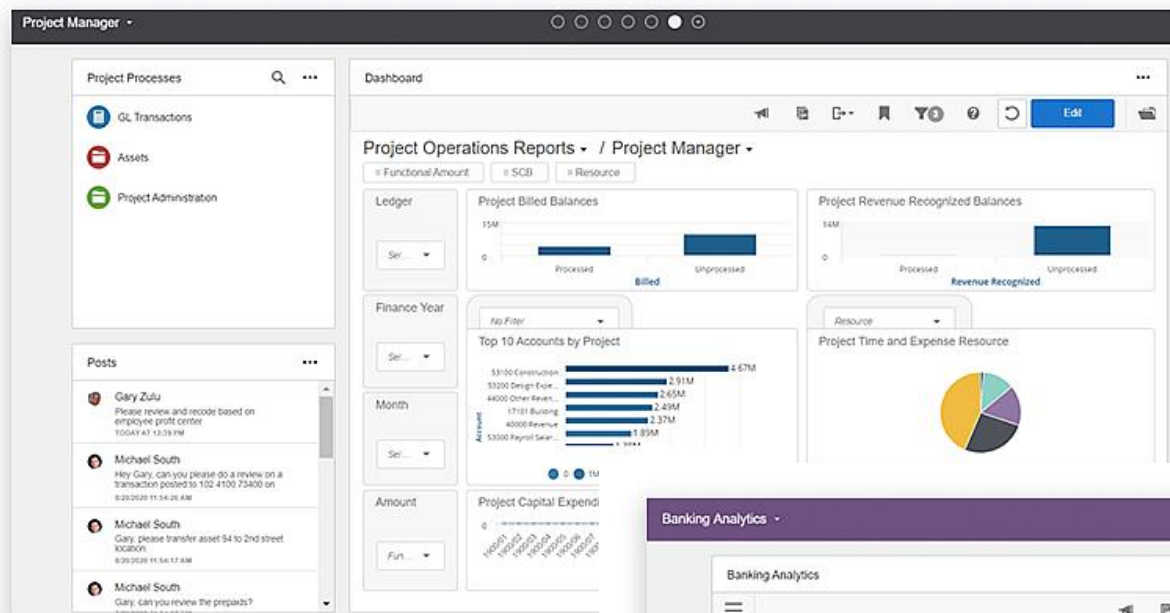
#### ELECTRONIC PLAN REVIEW MOCKUP STATION:



1. WACOM INTUOS PRO CAD GRAPHIC TABLET or higher model
2. HIGH-SPECS WINDOWS 2-IN-1 LAPTOP/TABLET (eg: 8-core i7 CPU, 16 GB RAM, FAST GPU, 4K 17" display, built-in Mic, HD Webcam, speakers, fastest USB ports...)
3. MULTIPOINT DOCKING STATION + KBD AND MOUSE
4. DUAL 32" HD MONITORS
5. HEADSET FOR VIRTUAL MEETINGS

**SOFTWARE:**  
WINDOWS 10 PRO LATEST OS VERSION, WITH NATIVE HAPTIC CONTROLS AND VOICE COMMANDS  
- ENERGOV (CLOUD NATIVE) and BLUEBEAM (integrated)  
- LASERFICHE and CRM (CLOUD BASED), City and County GIS and open data portals, Cartegraph, etc.  
**OTHER TOOLS:** ADOBE PRO (CLOUD), ESRI ArcGIS 3D, etc.





# Infor Deployment Method (IDM)

Kickoff



Live



## Inception

Project Kickoff  
Scope Definition  
IA Workshops  
GL Workshops  
Executive Summary

## Elaboration

System Design  
To-Be Processes  
Business Blueprint  
Core Team Training  
Conference Room Pilot (CRP)

## Construction

Application Configuration  
Technical Design/Development  
Testing (SIT) & Documentation  
Interface Testing

## Transition

Acceptance Testing (UAT)  
End User Training (EUT)  
Production Environment  
Cut-over / LIVE

## Optimize

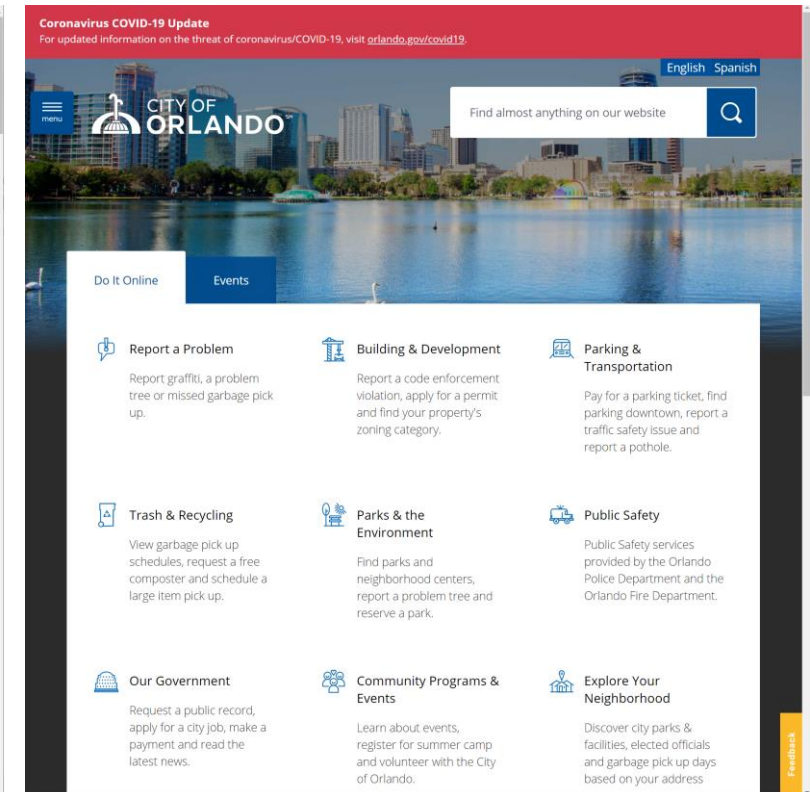
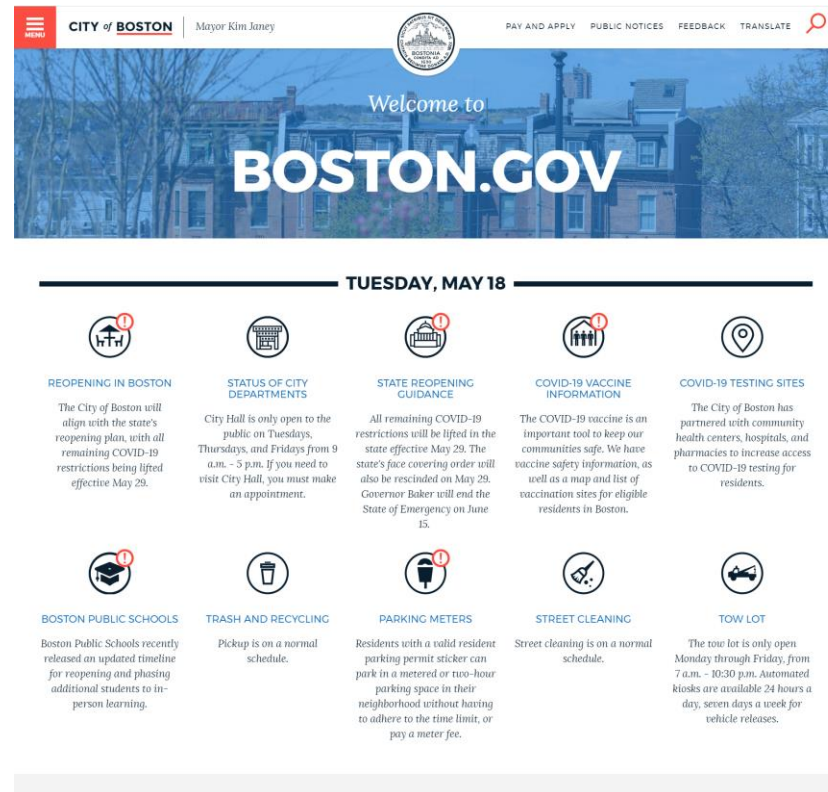
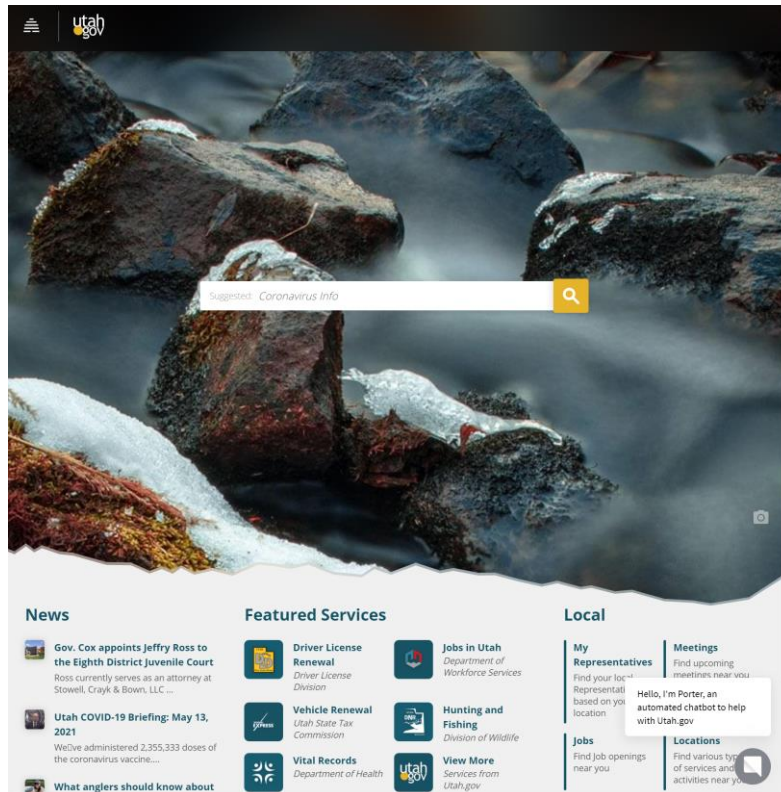


# CITY OF CORAL GABLES

## ENTERPRISE SYSTEMS – DIGITAL TRANSFORMATION – EFFICIENCIES – PAPERLESS PROCESSES DIGITAL EXPERIENCE PLATFORM (DXP) / NEW CITY WEBSITE AT INITIATION PHASE (GO-LIVE IN FY 2022)



### UX EXAMPLES:



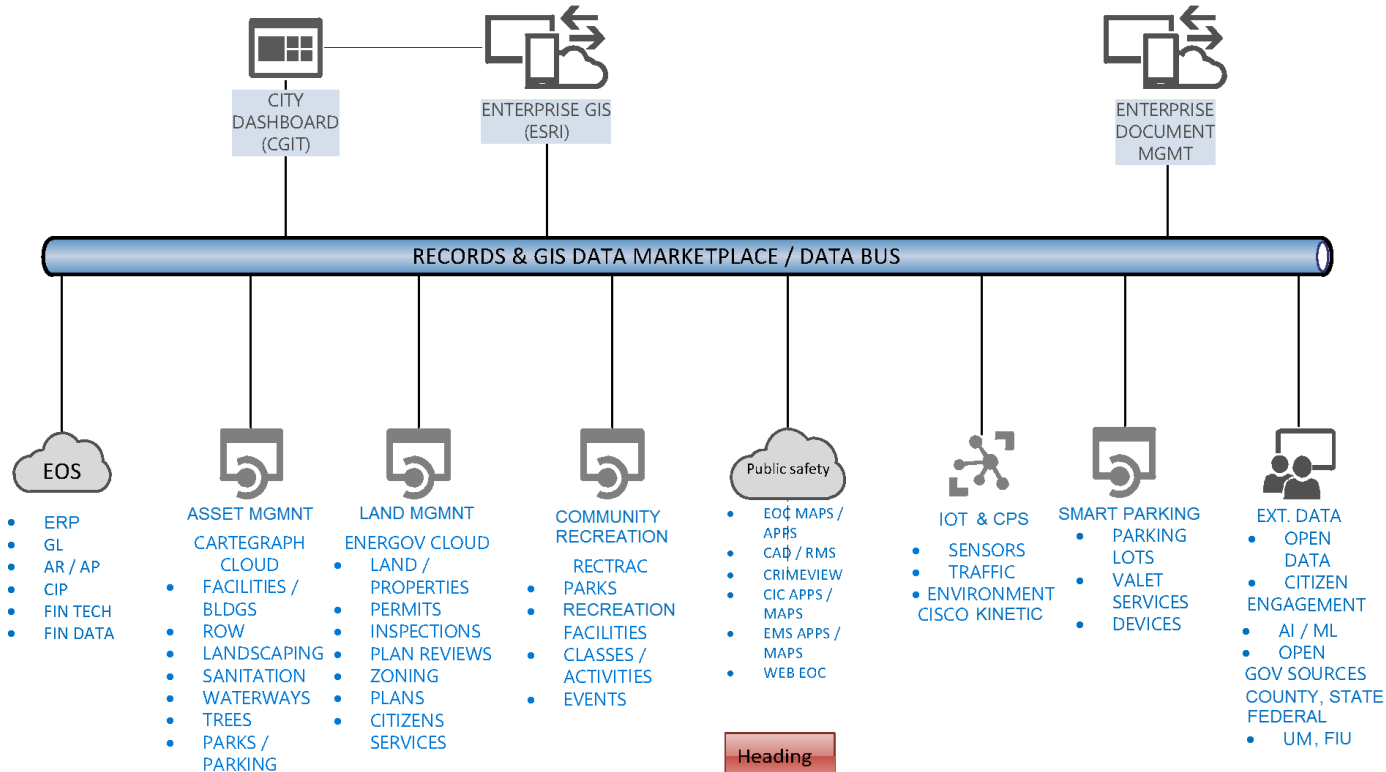
# CITY OF CORAL GABLES - INFORMATION TECHNOLOGY DEPARTMENT

## BEST PRACTICES – ENTERPRISE SYSTEMS & SMART CITY HORIZONTAL INTEGRATION

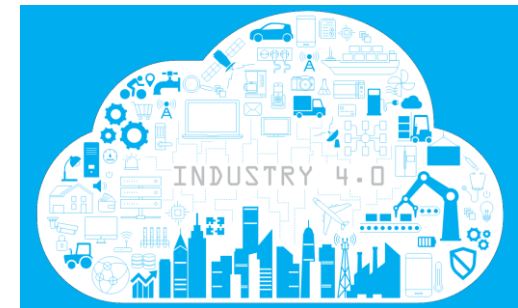
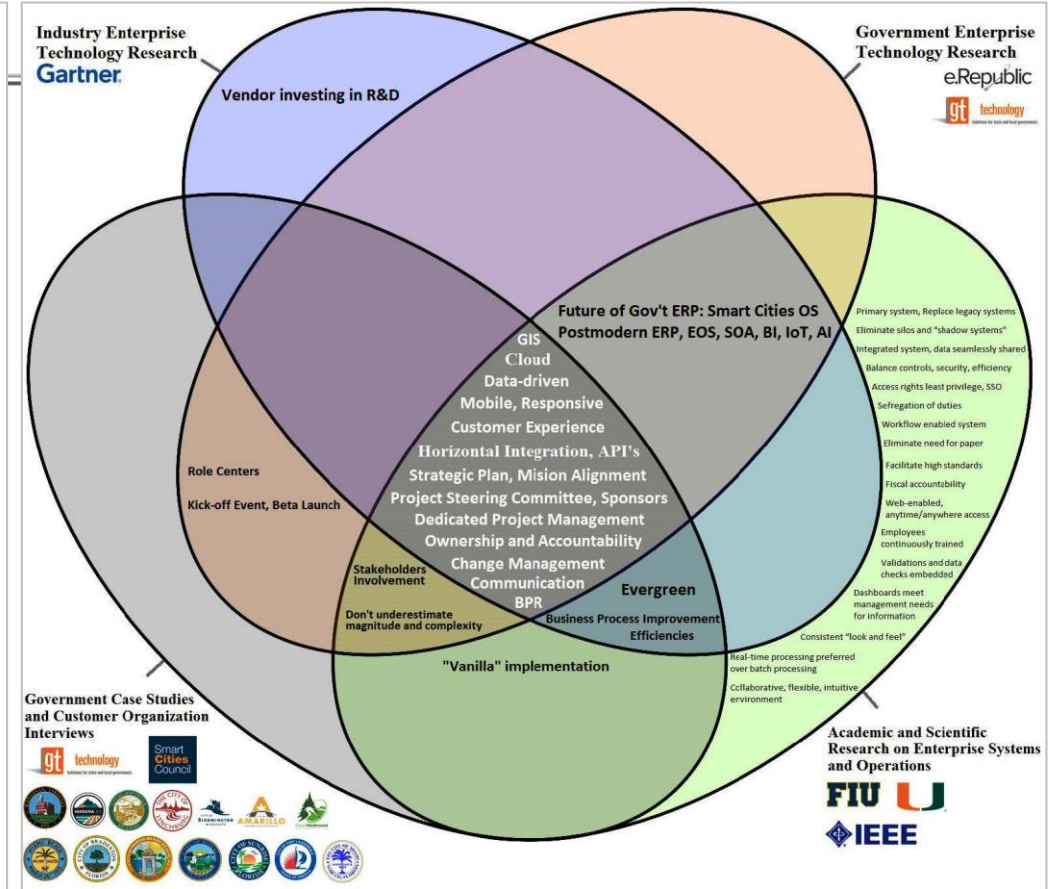
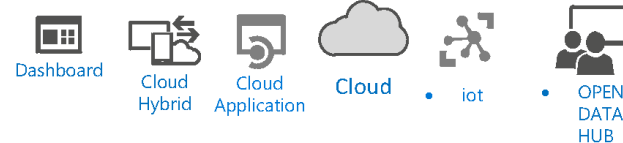


City of Coral Gables Information  
Technology Department  
Last Revision: 03/28/2019

### Smart City Horizontal Integration Systems Engineering Diagram High Level Topology and Architecture



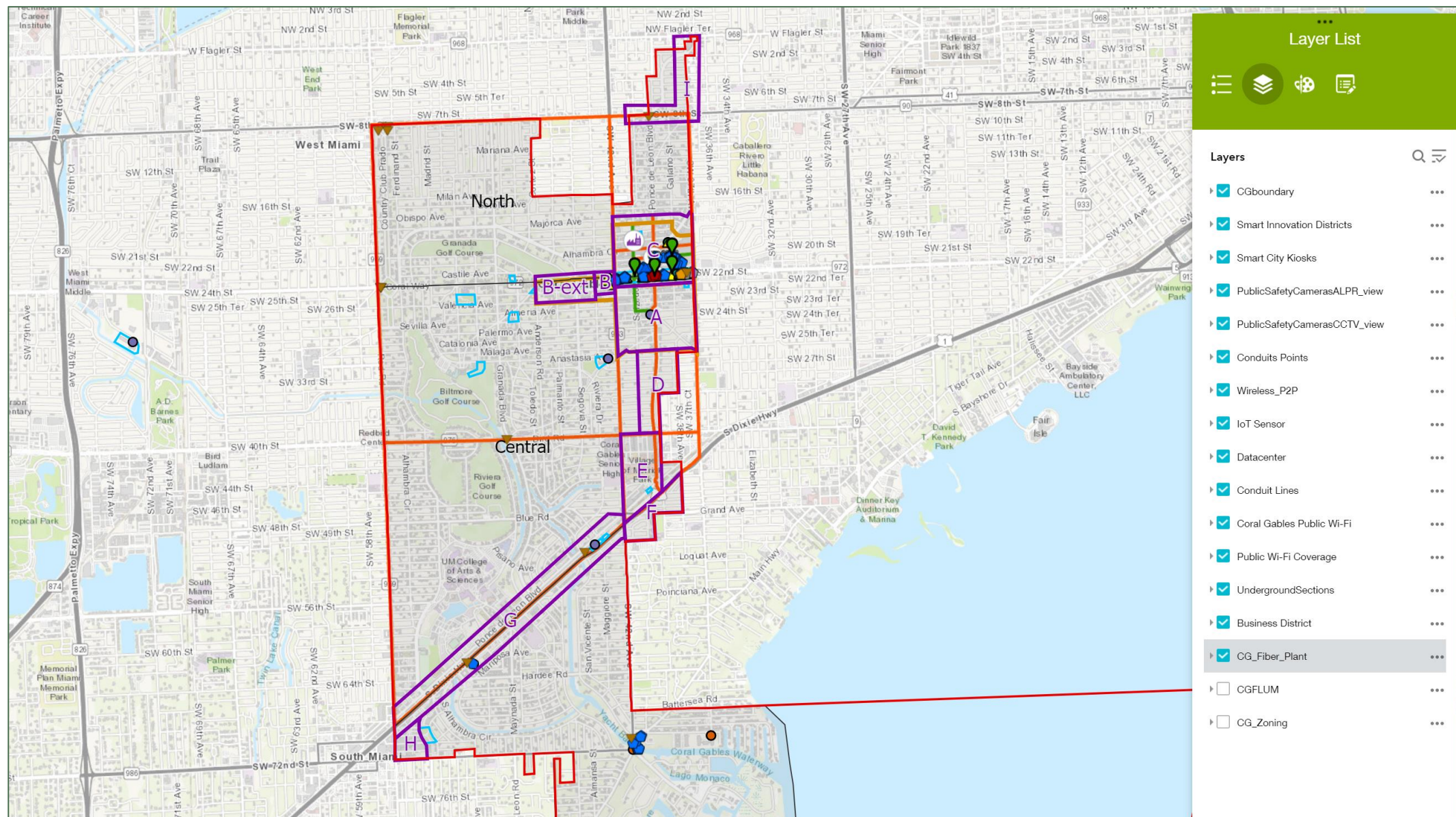
Heading





# CITY OF CORAL GABLES

## SMART DISTRICTS, INNOVATION DISTRICTS - STRATEGIC PLANNING, ENGINEERING & DESIGN

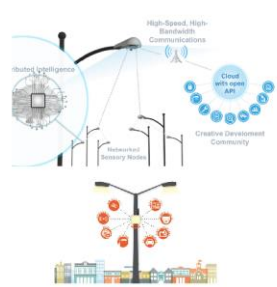




## INTERNET OF THINGS

## REAL-TIME URBAN AND ENVIRONMENTAL VISIBILITY / PHYSICAL INTERFACING

### SMART LIGHTS



### TRAFFIC & PARKING SENSORS



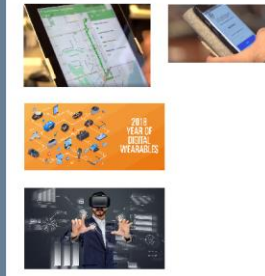
### PUBLIC SAFETY SMART EQUIPMENT



### ENVIRONMENTAL SENSORS & ACTUATORS



### SMART DEVICES



### SMART KIOSKS & DIGITAL SIGNAGE

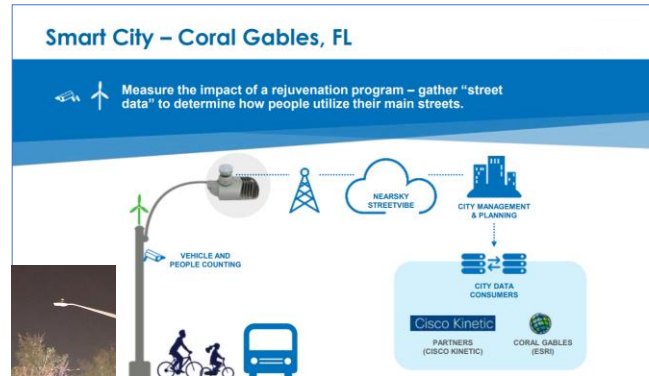


### ROBOTICS & SMART VEHICLES



- CCTV cameras, ALPR, and public safety smart devices
- **Traffic sensors:** pedestrians, vehicles, bicycles, visitors, RF
- Environmental sensors (waterways, air quality, noise)
- **Smart Parking sensors** (counting available/busy spots)
- Smart Lighting controllers & IoT network / Smart Poles
- Smart City Digital Kiosks; Smart Building SHM sensors
- Telemetry sensors and actuators; **Fleet Management**, etc.
- IoT and Urban Analytics AI Platforms

- IoT sensor data is strategic and becomes **actionable information** (traffic engineers, public safety officers, urban planners, city management, researchers, businesses, public in general)
- Open IoT data aggregated in the smart city hub and private IoT data is studied by researchers, marketing and city analysts and used by businesses, planners, public safety officials, traffic engineers, city officials and constituents that are part of the **smart city ecosystem**
- Constituents benefit from **actionable sensor data** with dashboards visualization and statistics by hour/day/week/month
- Used for **urban planning and design**, for **traffic and civil engineering to design better and safer roads and infrastructure**
- Used by businesses to design strategies (retail, service), grow sales, understand market and consumer needs.



SMART CITY HUB PUBLIC PLATFORM:

[WWW.CORALGABLESMART.CITY](http://WWW.CORALGABLESMART.CITY) - [WWW.CORALGABLES.COM/SMARTCITY](http://WWW.CORALGABLES.COM/SMARTCITY)



**PUBLIC & PRIVATE CLOUDS & DATACENTERS**

**BIG DATA-AGGREGATION & ANALYTICS**

**ARTIFICIAL INTELLIGENCE & MACHINE LEARNING**

**VIDEO ANALYTICS**

**OPEN DATA & APIs**

**HORIZONTAL & VERTICAL INTEGRATION**

**Multi-camera street intersection view**

**Street-level view of a sensor unit**

**Car with a sensor unit and a video frame showing object detection**

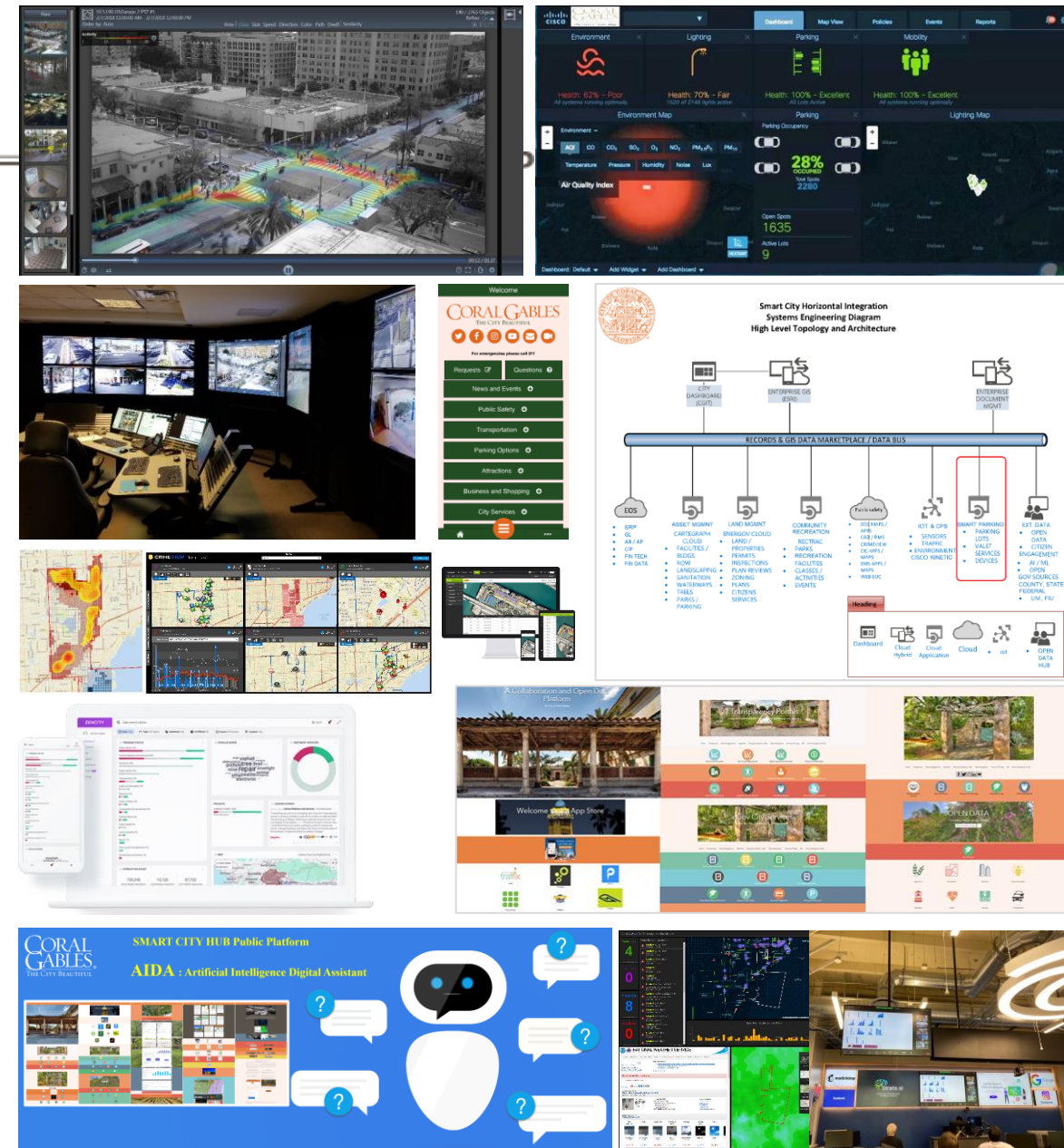
**Street-level view of a sensor unit**

**Street-level view of a sensor unit**

**Street-level view of a sensor unit**

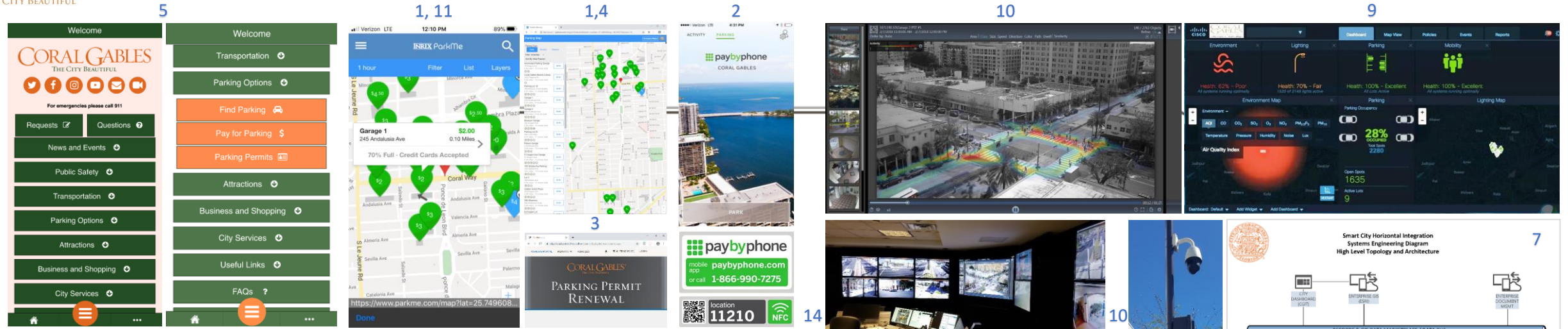
1. Computer vision, AI & ML for IOT/CPS applications.
2. Producing & sharing actionable AI analytics on the smart city hub public platform: [www.coralgables.com/smartcity](http://www.coralgables.com/smartcity)
3. Predictive crime analytics using machine learning algorithms. Traffic accidents and crime prevention/reduction.
4. Public sentiment analytics
5. LiDAR photonics Right of Way analytics.
6. Cybersecurity AI applications (behavior analytics, heuristics).
7. Situational awareness and traffic analytics at our **Community Intelligence Center** (use case: using AI our analysts found a missing child in the middle of a crowded event in Miracle Mile.)
8. Smart City Hub AI Virtual Assistant Chatbot pilot, Robotic Process Automation and other hyper-automation cases.
9. NIST Data Supercluster co-chair; open AI framework, platform

- End users: **drivers and commuters**, researchers, marketing and city analysts, businesses, planners, public safety officials, first responders, **traffic engineers**, city officials and all members of the smart city ecosystem.
- Constituents benefit from **actionable data, predictive analytics and insight** generated and processed by AI/ML-capable engines with dashboard visualization in the Smart City Hub public platform.
- **High visibility, predictability and automation** drive efficiencies and enhance operations and effectiveness.
- Used for **situational awareness**, urban planning, **traffic & civil engineering** to **design safer roads and infrastructure**.
- Used by businesses to design strategies (retail, service), grow sales, understand market and consumer needs.





# CITY OF CORAL GABLES - SMART PARKING AND SMART MOBILITY TECHNOLOGIES (1)



## Smart Parking and Mobility Platforms, Portals and Apps:

1. Inrix/ParkMe smart parking mobile/web app, cloud platform: Finding parking (GIS, GPS), cost information/comparison, real-time occupancy
2. Pay by Phone parking payment app & cloud platform: Pay for parking
3. T2 Parking Permit portal: Renew, manage parking permits
4. GIS parking facility management data layers
5. Coral Gables Mobile App: aggregates all parking apps
6. Coral Gables Smart City Hub public platform: aggregates all parking apps and open data
7. Horizontal Integration of Smart Parking Systems and Data
8. WIP: Automated Gateless Parking Guidance Systems Cloud Data Platforms (next page)
  - **Smart Mobility:** Trolley app, Freebee app, AVL, connected vehicles, Transit platform, GTFS transit data integration, AV pilots, Waze CCP platform, Mobility Hubs projects, Micro-mobility data platforms...

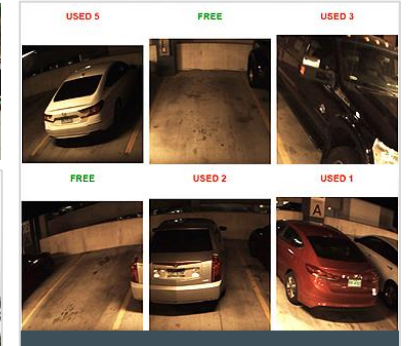
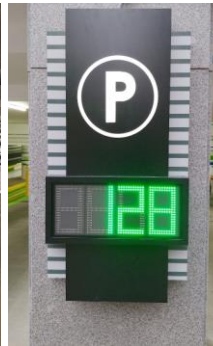
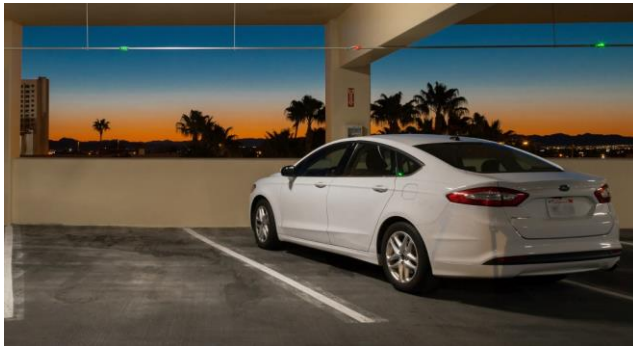
## Smart Parking and Mobility IoT (Internet of Things) and Data Analytics:

9. Parking Sensors: Pilot in Downtown. City IoT Platform and dashboards.
10. Computer Vision and Artificial Intelligence: Pilot in Downtown, detecting and analyzing used/occupied street parking in Miracle Mile and other streets
11. Connected gate systems: Garage occupancy data API interface on the City's app
12. ALPR (Automated License Plate Readers): in Parking Garages and Parking enforcement vehicles
13. Connected parking devices: Parkeon and other devices
14. Community Intelligence Center (CIC): aggregates all video analytics for parking locations and sensors. Video management systems, ALPR systems, server analytics backend. CIC cmd room.
15. Automated Gateless Parking Guidance IoT Systems





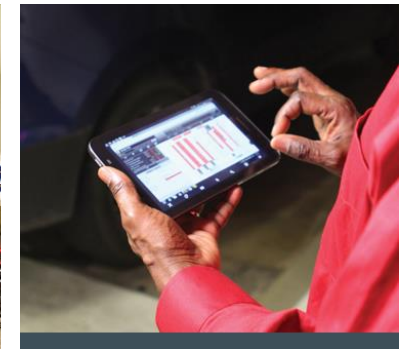
P	Gates A1-A15
Level 5	706
Level 4	82
Level 3	7
Level 2	118
Level 1	432



## Automated Parking Guidance Systems

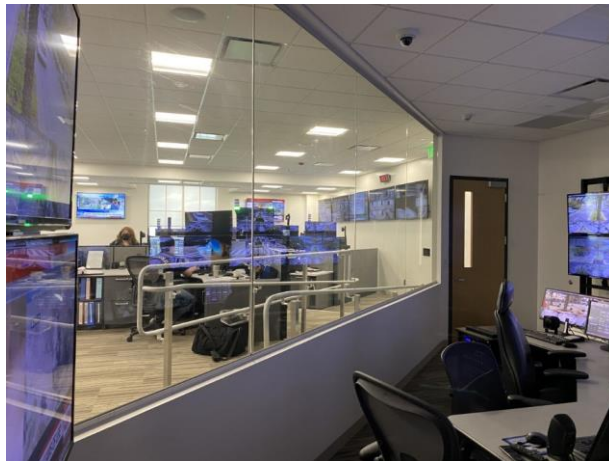
WIP in PG7, New PSB and other City buildings:

- Automated Gateless Parking Guidance Systems (planned for PG7, New PSB, and others)
- Real time, accurate Parking Space Counting
- Wayfinding signage; Color-coded guidance lighting; Parking signage
- User interfaces; Enhances Customer Parking Experience; Customers can park faster and safer
- Car finder/locator; Electronic parking kiosks
- Security Features; Camera-based multi-function sensor system
- Maximizes garage parking efficiency; Speeds up parking process.
- User Interface software, cloud data platform, mobile apps



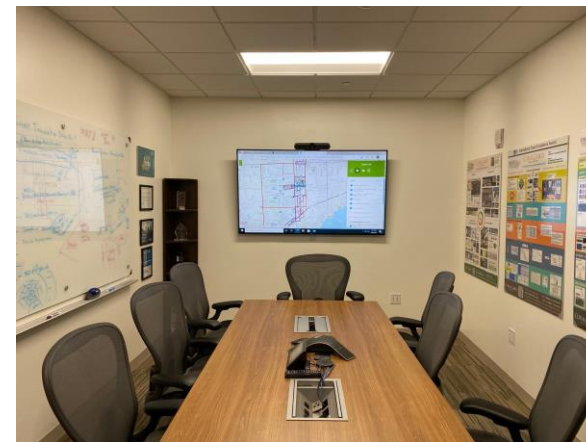
SMART CITY HUB PUBLIC PLATFORM:  
[WWW.CORALGABLESMART.CITY](http://WWW.CORALGABLESMART.CITY)  
[WWW.CORALGABLES.COM/SMARTCITY](http://WWW.CORALGABLES.COM/SMARTCITY)





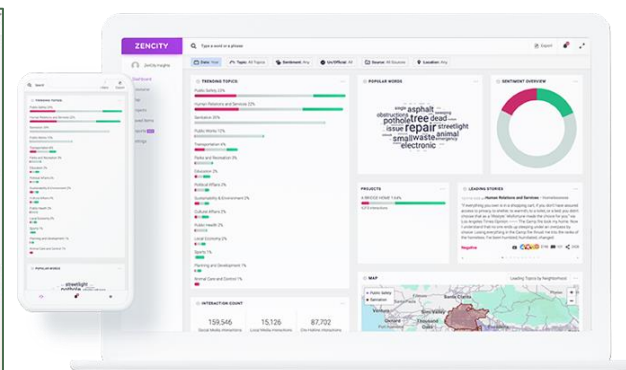
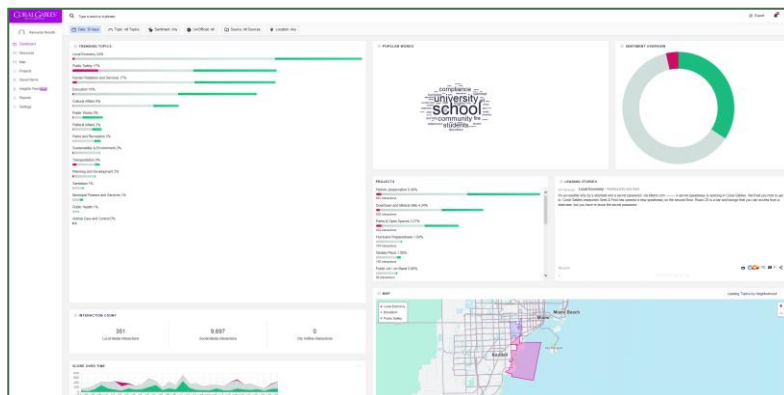
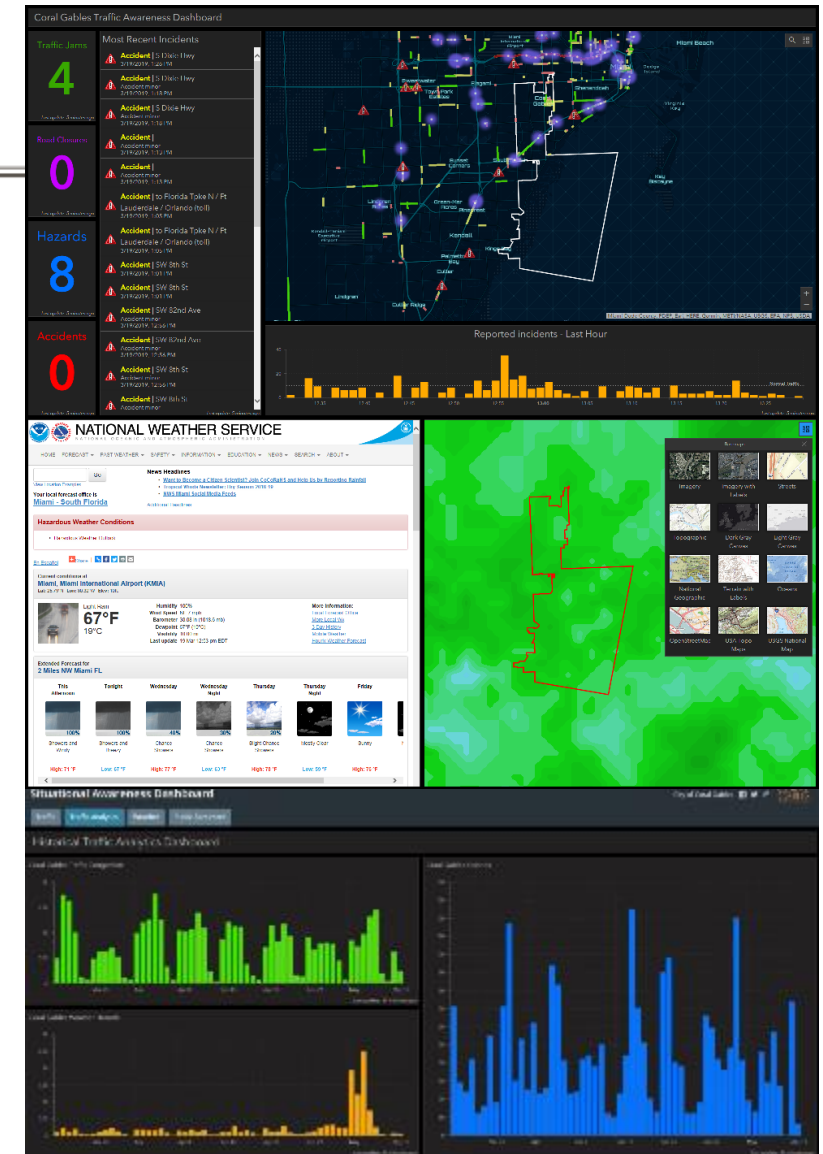
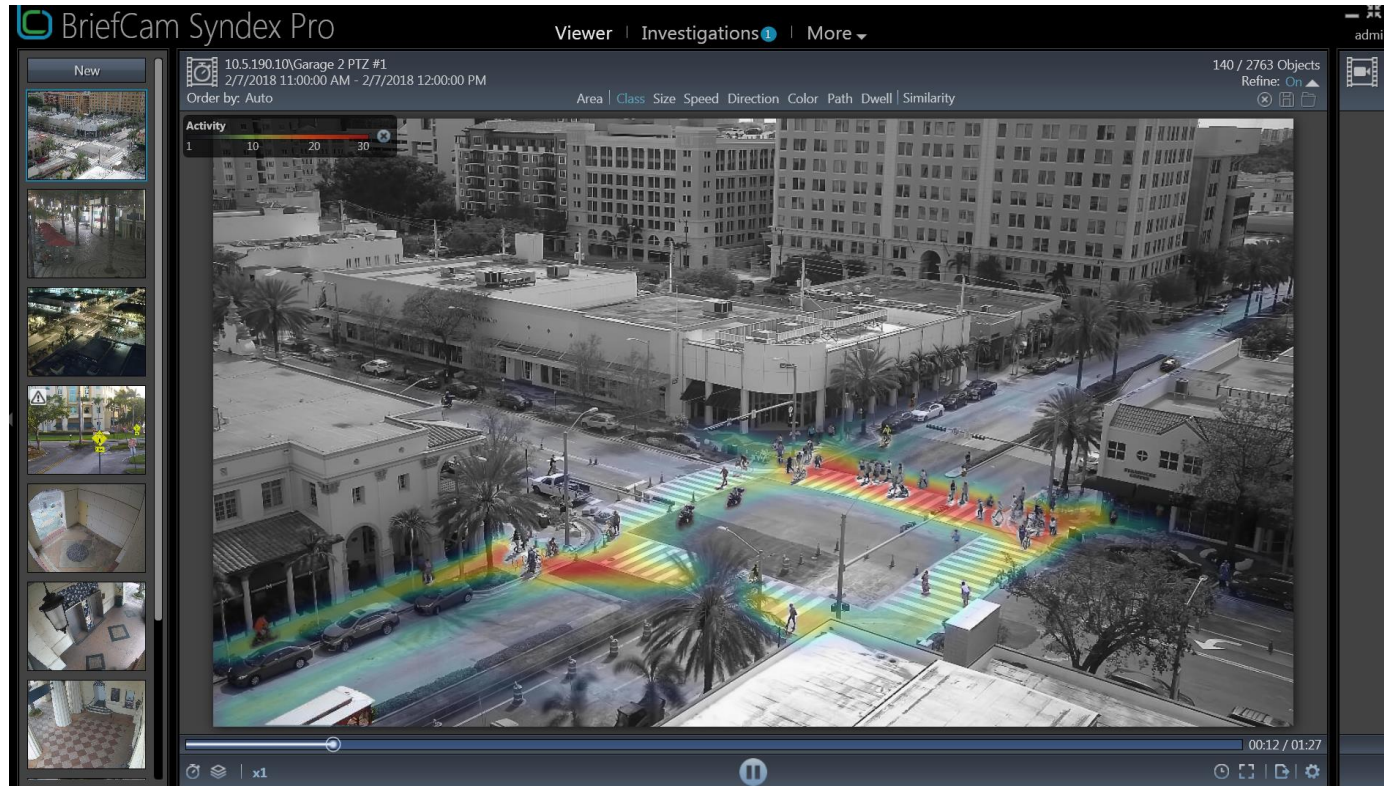


CITY OF CORAL GABLES – SMART BUILDINGS – PSHQ, FS2/TROLLEY  
NETWORK HQ, 1RY DATA CENTER, BACKUP 911 PSAP



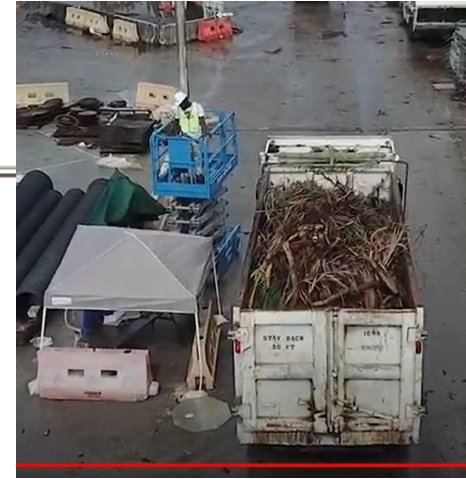
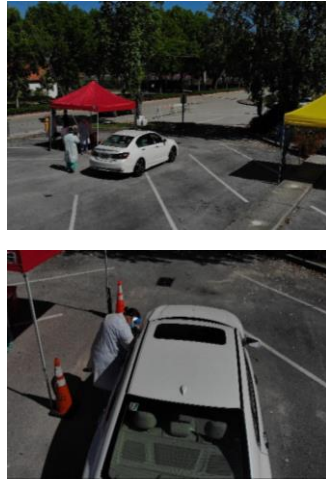
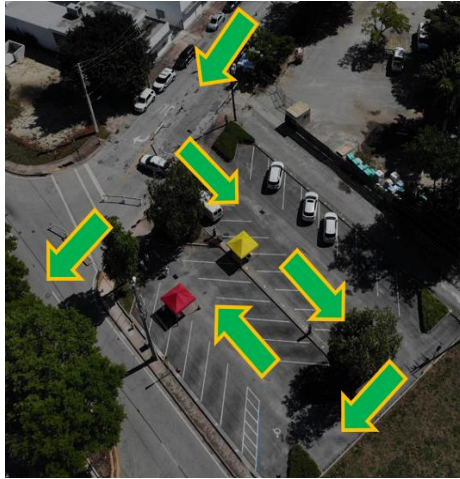


# CITY OF CORAL GABLES - SMART CITY DATA PLATFORMS LAYER – USE CASES



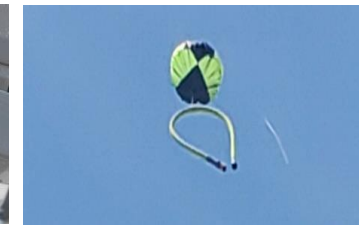
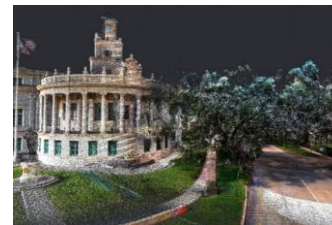
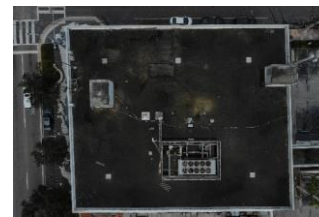
- VIDEO ANALYTICS – COMPUTER VISION & AI FOR TRAFFIC ENGINEERING AND PUBLIC SAFETY
- SITUATIONAL AWARENESS DASHBOARD – WAZE CONNECTED CITIZENS PARTNERSHIP (CCP)
- AI AND MACHINE LEARNING FOR CITIZEN ENGAGEMENT AND PUBLIC SENTIMENT ANALYTICS





## City of Coral Gables Drones/UAS, Robotics, Autonomous Systems Use Cases:

- Drones/UAS use cases:
  - Hurricane rescue recon and damage assessment.
  - **Combined use cases** with IoT, AI/ML, autonomous routes, computer vision, crowd analysis, data analytics, real-time video feeds on Incident Command Post.
  - Drone delivery for rescue recon and other emergency management scenarios.
  - With live video broadcasting; with autonomous routes; with cellular or satellite communications. **Traffic Management and Mobility Applications.**
  - Outdoor Covid-19 testing sites monitoring.
  - Building rooftop water damage/accumulation assessment.
  - **Public safety operations.**
  - Fire accreditation, site operations/inspections.
  - Telecom tower/antennae inspections.
  - **LiDAR GIS 3D modeling** in collaboration with universities and GIS aerial photography.
  - Video analytics.
  - Communications / Public Affairs / CGTV drones with special cameras, dedicated for TV production for our PEG TV channel, YouTube, social media and webcasting channels.
- **Autonomous Vehicles.**
- **Smart and connected mobility pilots.**
- Public Safety and Public Works robotics technologies.





## SMART CITY HUB

OPEN DATA, TRANSPARENCY AND COLLABORATION. SMART TOOLS AND APPS FOR CITIZENS, BUSINESSES AND CUSTOMERS

**SMART CITY HUB**

VALUE, TRANSPARENCY, OPEN DATA AND ANALYTICS, ACTIONABLE INFORMATION, EFFICIENCIES  
CITIZEN ENGAGEMENT, MOBILITY, ACCESSIBILITY, INCLUSION, CROWDSOURCING, COLLABORATION

**DATA MARKETPLACE**  
OPEN DATA PORTALS

**APP STORE**

**TRANSPARENCY PORTALS**

**CRIME INTELLIGENCE CENTER**

**IoT DASHBOARDS**

**GIS PORTALS**

**ENTERPRISE SYSTEMS • eGOV**

**CITIZEN ENGAGEMENT**

### SMART CITY HUB PUBLIC PLATFORM:

[WWW.CORALGABLESMART.CITY](http://WWW.CORALGABLESMART.CITY) - [WWW.CORALGABLES.COM/SMARTCITY](http://WWW.CORALGABLES.COM/SMARTCITY)

#### Benefits:

- Free open data from pedestrian and traffic sensors; provides statistics by hour/day/week/month; it can be used to design business strategies (retail, service, etc.)
- Digital services, mobile apps and applications for residents, businesses and their customers (transportation, parking, public safety, customer services connect...)
- Transparent government data that benefits all constituents (property tax, public records, business licenses, vendor services, open bids, demographics, dashboards, City agendas and legislative documents...)
- Tools that engage citizens and attract visitors and customers (social media, news, events, attractions, City virtual tours, parks and recreation digital services...)
- Open GIS mapping data that is useful for residents, developers, real estate agents, contractors and businesses in general
- Actionable information from business databases; among other features that foster economic growth and business innovation



# COVID-19 PANDEMIC: HIGH VISIBILITY – SITUATIONAL AWARENESS – ACTIONABLE INSIGHT

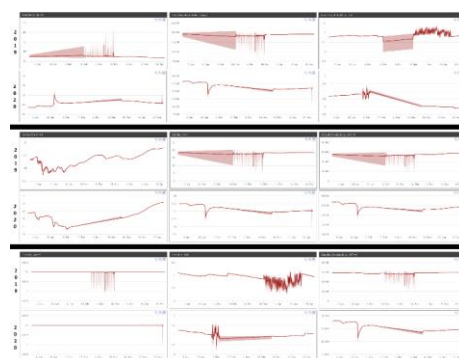
## TRAFFIC CPS/IOT DATA



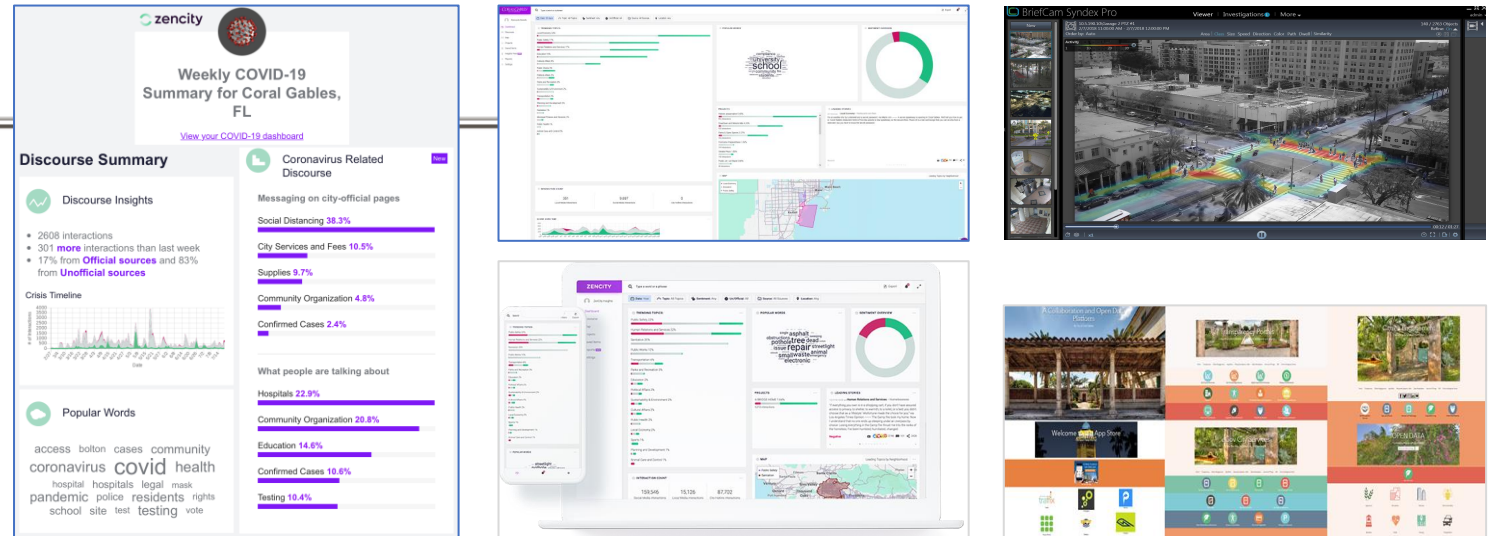
## ENERGY CPS/IOT DATA



## ENVIRONMENTAL IOT DATA



## A.I., PUBLIC SENTIMENT ANALYTICS, SE DATA MODELS, DATA HUBS



## High-Visibility from IoT/CPS Sensors for First Responders - Integrated into SOPs and Business Continuity Plans Smart City Response to the COVID-19 Pandemic Crisis - Organic Resilience → Mission-Driven Alignment

### ➤ Strategic Planning, Preparedness

- Incident Response, Emergency Management, Continuity of Operations
- Collaboration & Interoperability, Mobile Workforce, Risk Assessment
- Concurrent Crises Management

### ➤ Engineering Framework

- Scalable Capacity, Resilient, Secure Design, Industry Standards, Best Practices
- Business Composability, Hyperconnectivity
- **High Visibility, Data Insight**

### ➤ Adaptability and Agility

- Cybersecurity Awareness, Digital Literacy & Adoption, Continuous Improvement / Learning
- Adaptable COOP, Agile response & Solution delivery, Resourcefulness



## Cyber-physical Systems, Smart Lighting, IoT, AI, Data Science... Coral Gables Smart City Case Studies - Papers and Publications

IEEE Internet of Things Magazine, June 2020 Edition

Smart Cities Case Study:

City of Coral Gables Leverages the Internet of Things to Improve Quality of Life

<https://ieeexplore.ieee.org/document/9125438>

ASPA PA Times Magazine, Fall 2020 Edition

Dealing with COVID-19:

How Coral Gables, FL is Using IoT and Data Analytics to Respond

<https://patimes.org>



PAGE 9  
Managing a City in a  
Pandemic

PAGE 22  
Can ALICE Households  
Survive the COVID-19  
Pandemic?

PAGE 39  
The Response to  
COVID-19 in Mexico



NIST GCTC, Covid-19 Resource Kit

Smart Cities Case Study:

City of Coral Gables COVID-19 CPS/IoT Data Analysis

[https://gctc.opencommons.org/images/a/a5/CGIT\\_COVID-19\\_IOTDataAnalysis.pdf](https://gctc.opencommons.org/images/a/a5/CGIT_COVID-19_IOTDataAnalysis.pdf)

OneWater Academy, Covid-19 Resource Kit

Smart Cities Case Study:

Smart City Technology Strategies for Water Management

<https://onewateracademy.org/onewaterblog/blogpost/5e9e3bfec7f2310017e68994>

Other Published Papers (Walkability Data Studies, GIS, Smart City Planning, etc.):

[https://www.coralgables.com/media/IT/CGIT\\_PublishedOriginalPapers.pdf](https://www.coralgables.com/media/IT/CGIT_PublishedOriginalPapers.pdf)





CITY OF CORAL GABLES  
SMART CITY AWARDS AND RECOGNITION



2018 Digital Cities Award, First Place  
>75K Population Category



2020 Smart 50 Award Winner  
Urban Infrastructure Category



Named to 8 Smart Cities to Watch in 2020  
StateTech Magazine



2020 Open Cities Index Award  
Winner, U.S. 1st Place



American Society for Quality  
2019 International Team Excellence Award  
Case Study Competition - 3rd Place



Selected as one of 17 public agencies in the  
inaugural STIR Labs program funded by NSF



IEEE 2017 World Standard Day  
Smart City Video Contest Prize



National Institute of Science and Technology (NIST)  
Global City Teams Challenge (GCTC)  
Supercluster Co-Chair, Action Cluster Chair



2019 Open Cities Index Award  
Winner, U.S. 1st Place



Named to 10 Top-Performing ITEA Teams from  
around the world, 2019, Quality Progress Magazine

# CITY OF CORAL GABLES

## SMART CITY STRATEGIC PARTNERSHIP, RESEARCH AND COLLABORATION MODEL

OUTREACH, CO-INNOVATION, CO-CREATION, BENCHMARKS, STANDARDS AND BEST PRACTICES

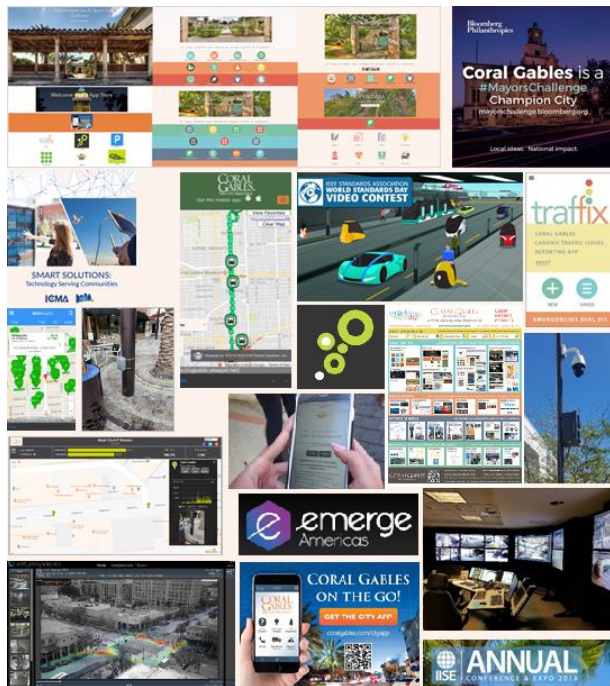
### Performance Benchmark and Awards Organizations



### Research & Development Co-Innovation



### Citizen Engagement, Outreach and Communication



SHARE → LEARN → PARTNER → COLLABORATE → BUILD VALUE

### Strategic Partnerships:

Industry, Academia, Government, Nonprofits

Improve Programs, Augment Capacity

Sustainability, Resilience, Workability, Livability



Raimundo Rodulfo, P.E., MSEM, PMP, CSSBB  
Chief Innovation Officer / Director of Information Technology

May 2021

