

A photograph of a dense, lush green tree canopy. The trees have thick, gnarled trunks and thick, waxy leaves. In the center, there is a large, rectangular orange box with a slightly textured, paper-like appearance. The box contains the text 'Coral Gables' in a white, elegant serif font, followed by a horizontal line with arrowheads at both ends, and then 'PUBLIC ART' in a smaller, white, all-caps serif font. At the bottom center of the image, there is a logo for 'CORAL GABLES' in a large, white, serif font, with 'THE CITY BEAUTIFUL' in a smaller, white, all-caps serif font below it.

Coral Gables

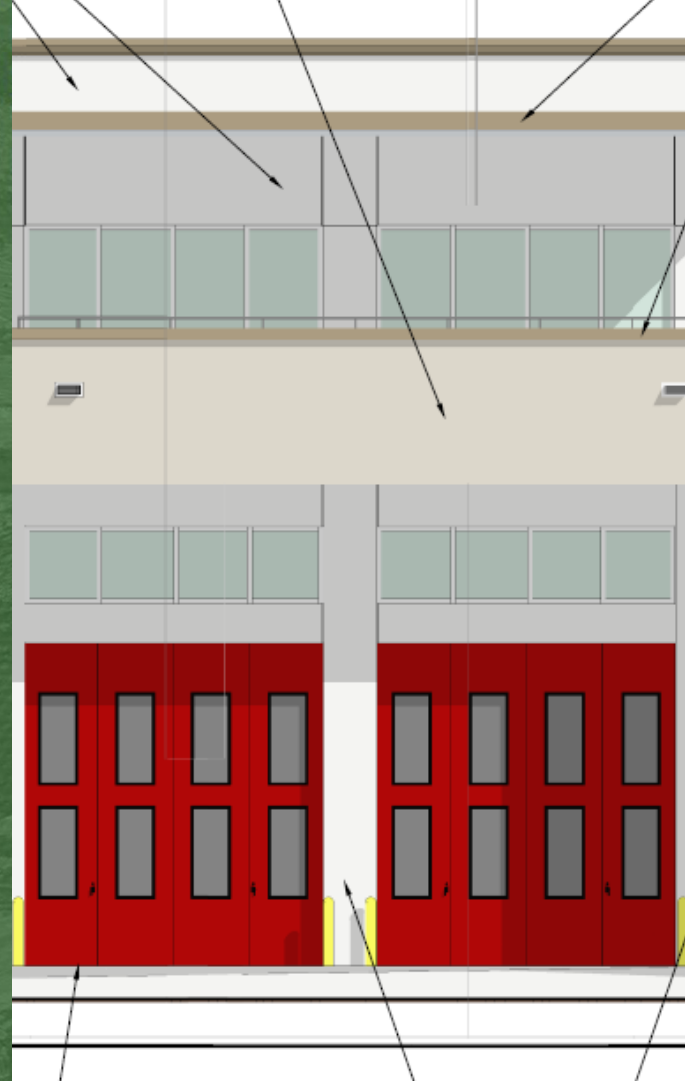
PUBLIC ART

CORAL
GABLES
THE CITY BEAUTIFUL

Art in Public Places

FIRE STATION 4
PROPOSAL ARTISTS

CORAL
GABLES®
THE CITY BEAUTIFUL



FIRE STATION 4



PROJECT LOCATION



VICINITY MAP
NTS



FIRE STATION 4



PERSPECTIVE VIEW

SCALE: N.T.S.

TIMELINE

Arts Advisory Panel met to discuss Fire Station 4 public art:

- May 26, 2021
- June 23, 2021 with Architect and Fire Chief
 - Motion to develop a pre-qualified roster of artists
 - Panel members to recommend up to three artists each
 - Project budget recommendation of \$100,000
- August 25, 2021
 - Motion recommending artists: Thomas Bils, Beatriz Monteavaro, Ana Samoylova, Onajide Shabaka, Antonia Wright & Ruben Millares
 - Proposal recommendation of \$1,500 per artist team

Staff recommended additional artist: Cara Despain

TIMELINE



Cultural Development Board met to discuss Fire Station 4 public art:

- October 19, 2021
 - Motion recommending artists: Thomas Bils, Cara Despain, Beatriz Monteavaro, Ana Samoylova, Onajide Shabaka, Antonia Wright & Ruben Millares
 - Project budget recommendation of \$100,000
 - Proposal recommendation of \$1,500 per artist team

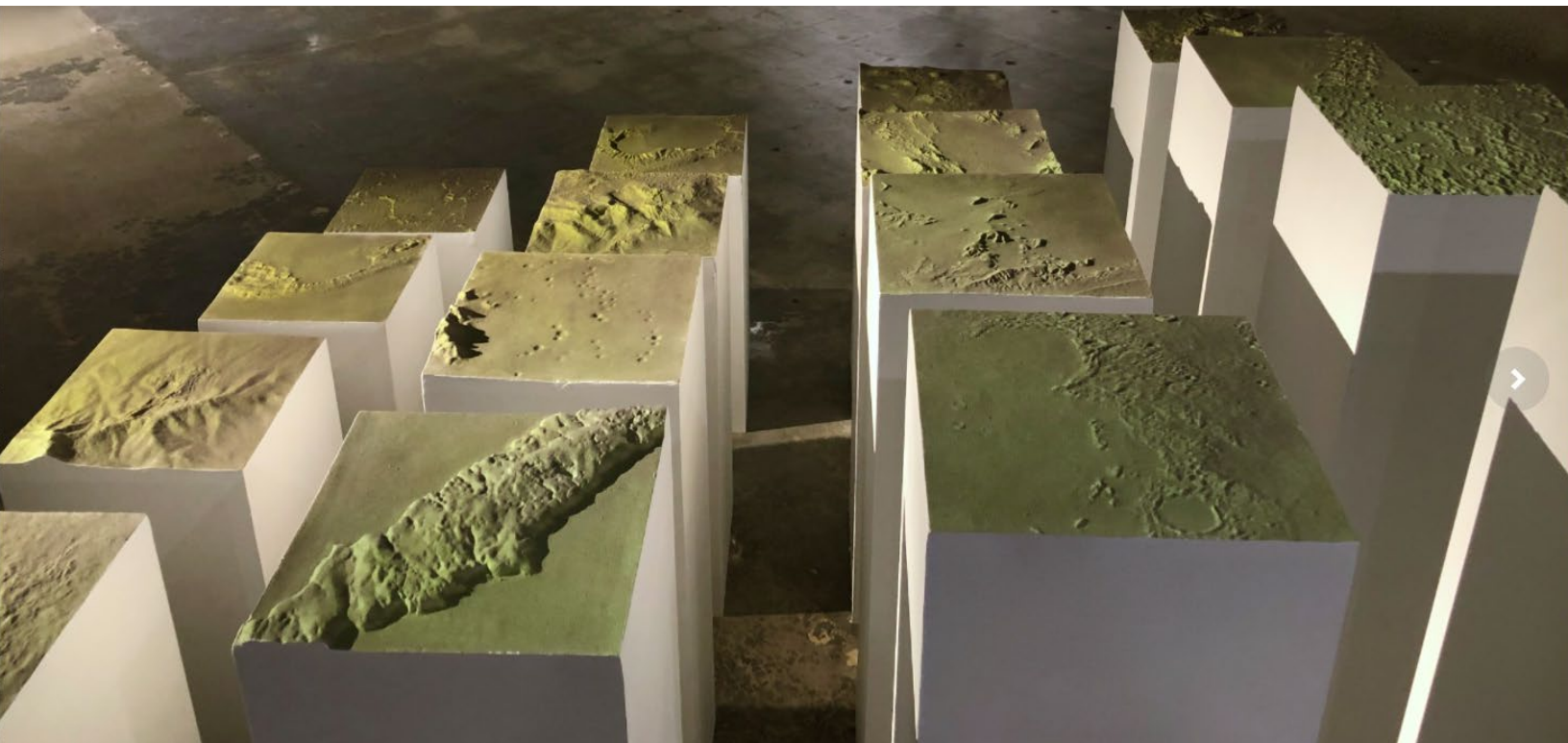
Three artists stated their interest in developing a proposal concept. Cara Despain, Ana Samoylova, and Onajide Shabaka

ARTISTS

Cara Despain
Ana Samoylova
Onajide Shabaka

CARA DESPAIN

- Born 1983, Salt Lake City, UT
- BFA, University of Utah
- Lives and works in Miami
- Primary media: multi-media
- Work addresses issues of land use, climate change, effect of human impact on Earth's geology and ecosystems
- Solo and Group exhibits: Southern Oregon University, Contemporary Utah Art Center, Spinello Projects, University of Tennessee Knoxville, Emerson Dorsch, Brigham Young University; among others
- Multiple residencies and awards
- Recent commission of artwork for the Underline, Brickell
- <https://caradespain.com/>



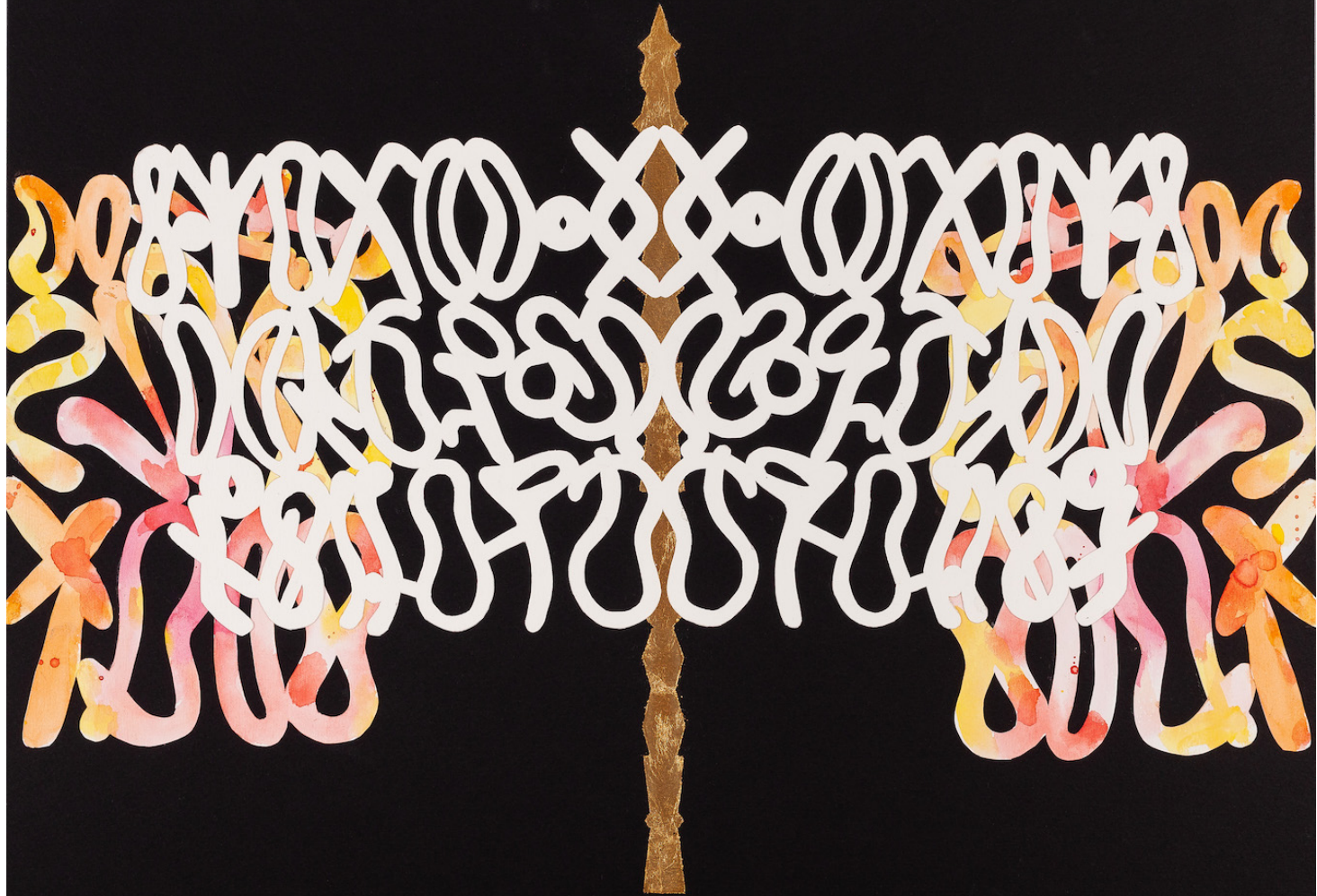
ANA SAMOYLOVA

- Born 1984, Russia
- MFA, Bradley University
- Lives and works in Miami
- Primary media: photography
- Work investigates notions of environmentalism, consumerism, and the picturesque
- Solo and Group exhibits: Aperture Foundation, NY; Griffin Museum of Photography, Boston; Museum of Contemporary Photography, Chicago; among others
- Has exhibited internationally in Belgium, Brazil, and France, and more
- Work has been featured in the New Yorker, Foam, and Wired
- <https://dotfiftyone.com/Anastasia-Samoylova>



ONAJIDE SHABAKA

- Born 1948, Cincinnati, OH
- MFA, Vermont College of Fine Arts
- Lives and works in Miami
- Primary media: photography & mixed media
- Work is concerned with historical/biographical themes and exploration related to geography, geology, gathered objects
- Solo and Group exhibits in: Miami, Fort Lauderdale, Houston, Jamaica, Germany, among others
- Has exhibited at NSU Art Museum, PRIZM Art Fair, Museum of Contemporary Art of North Miami, Emerson Dorsch, among others.
- Recently awarded a sculpture commission for the Carrie Meek Foundation in Opa Locka, Florida
- <https://emersondorsch.com/artist/onajide-shabaka/>





Thank You

CORAL GABLES
HISTORICAL RESOURCES &
CULTURAL ARTS DEPARTMENT

CORAL
GABLES
THE CITY BEAUTIFUL