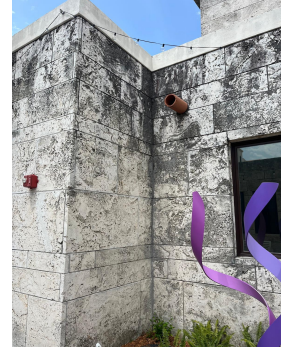


Walls clean up and sealing (Exterior walls)

- Pressure clean stucco and stone surface (3500 PSI)
- Tool out and remove old sealant
- Reseal with Greenock and all Sill and Tuff Stiff
- Apply 2 Coats garland Tuff Coat on stucco surfaces
- Recoat all exterior doors surfaces and frames

The Coral Gables Museum historic building is clad with some of the naturally occurring stones of Miami. Ulight and coral rock witch require their own particular upkeep due to their semi permeable nature and are a challenge to conserve. Preventative measures must be taken in order to stop further damage to the structure and the stone itself .

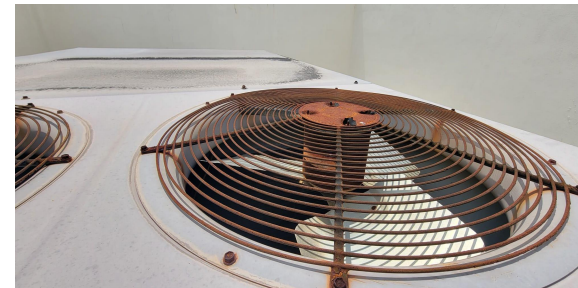
Estimate:
\$342,185



HVAC replacement (All Museum)

Estimate:
\$127,600

- When the building was inaugurated as a museum, a new wing was added to the historic. Since its inception in 2010, the HVAC system has only been maintain but never replaced. All systems are well beyond their life span and are in need or replacement.



Repairs Fewell Gallery

Estimate:
\$69,850

- Roof replacement

The original TPO roof of the CGM new wing is past its life span and requires a full replacement. As of now during heavy rains we are observing leaks in our galleries; this signifies a great issue to anything presented in our galleries spaces for liability reasons.



- Floor replacement

Floors are cracked, chipped and out of level. This is cause for alarm for obvious liability reasons. Additionally, electrical floor outlets are very damaged and they need a replacement.



Repairs Community Meeting Room (CMR)

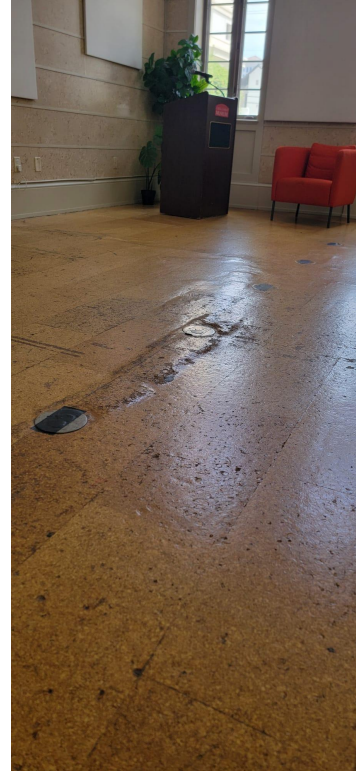
- Hardwood floor installation



- Windows Shades

Floor are dislodged, chipped and out of level. This is a safety hazard in a space with high traffic. Additionally, electrical floor outlets are very damaged and they need a replacement.

Estimate:
\$40,281.85



Emergency Generator (All Museum)

- Currently we do not have any backup generator, and for conservation matters in the museum it is of the utmost importance.

Estimate:
\$12,375

Generac Protector RG06045ANAX 60kW Liquid Cooled 1 Phase 120/240V Standby Generator New

Manufacturer: Generac SKU: RG06045ANAX ★★★★★ 1 review [Share](#)



Renovation Bathrooms and Kitchen

- Permits and Plans
- Materials and Parts
- Architectural
- Mechanical
- Electrical
- Procurement, General Condition & Escalation
- Total Construction Cost
- Trade Contractor Bond
- Plumbing
- Finishes

Estimate:
\$345,956.70



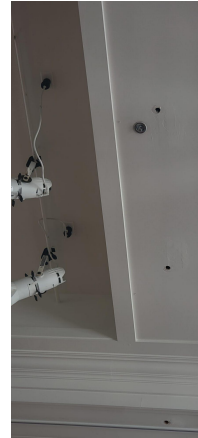
Renovation Bathrooms and Kitchen

Museums, like many other public spaces fall into categories of high human circulation. In light of this, entities such as ourselves take great concern in limiting the spread of disease and pathogens. While our bathrooms are functional, they fall out of contemporary preventive standards of hygiene and health.



Upgrades Fewell Gallery

- Lighting System



- Acoustic panels (Currently we do not have acoustic panels and we need them in order to use the space for rental functions)

Estimate:
\$49,308



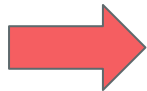
Upgrades Galleries (window shades)

Estimate:
\$19,451.85

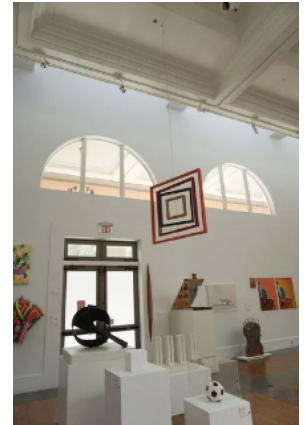
- Motorized roller shades (Abraham Gallery)



- Windows Shades (All Galleries)



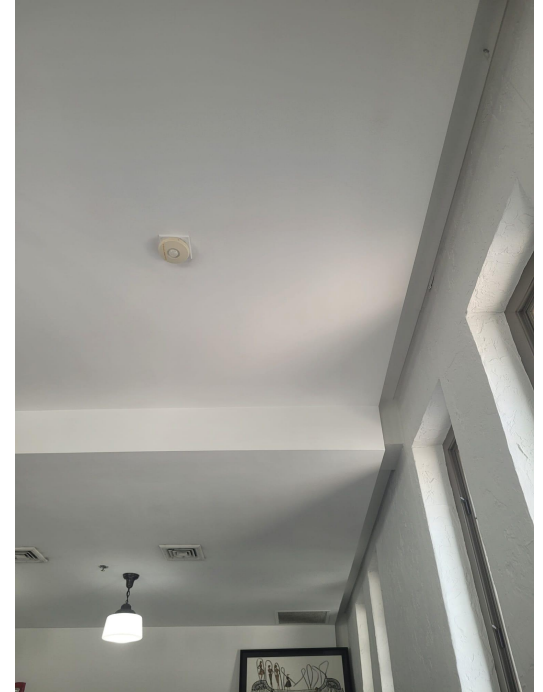
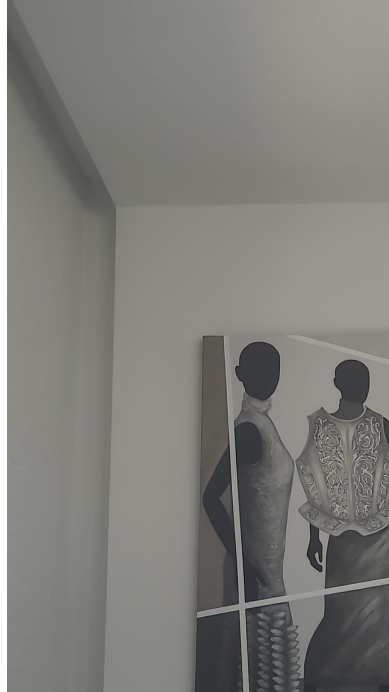
[More Galleries' Views](#)



False walls construction (All Galleries)

In light that we are a historic site in our city we are unable to modify the original building. For this reason the construction of false walls for the use of gallery space is a matter of great interest to us.

Estimate:
\$52,000



Mila Walls (Galleries)

Our Mila walls used in so many of our exhibits are deteriorating and in need of replacement.

Estimate:
\$72,074



Tile floor installation (Offices)

Workspaces such as our staff offices are in need of new floors as they are beginning to come off create hazards from employees.

Estimate:
\$5,780



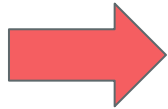
Restoration Loggia Lamps

We strive not only to maintain the overall historic buildings condition but as well as the many artifacts and objects we give home to. These chandeliers are historic and are in need of a full restoration so that they may keep adorning our museum.

Estimate:
\$6,825

FURNITURE & EQUIPMENT

- Mid-Depth Cabinet with Glass Doors (Collection Storage)
- 10-Drawer Flat File (Collection Storage)
- LED Pedestal Exhibit Case (Galleries)
- Freestanding Wall Exhibit Case (Galleries)
- Laminate Pedestal Case with Humidity Control (Galleries)
- Data Loggers (Galleries)
- Painted Freestanding Wall Case (Galleries)
- Data Logger with Display (Collection Storage)



As a Museum entity we uphold the highest possible standards in conservation of documents and other such media. For this reason it is imperative that we maintain and update our means of displaying and storing historic materials.

Estimate:
\$35,709

