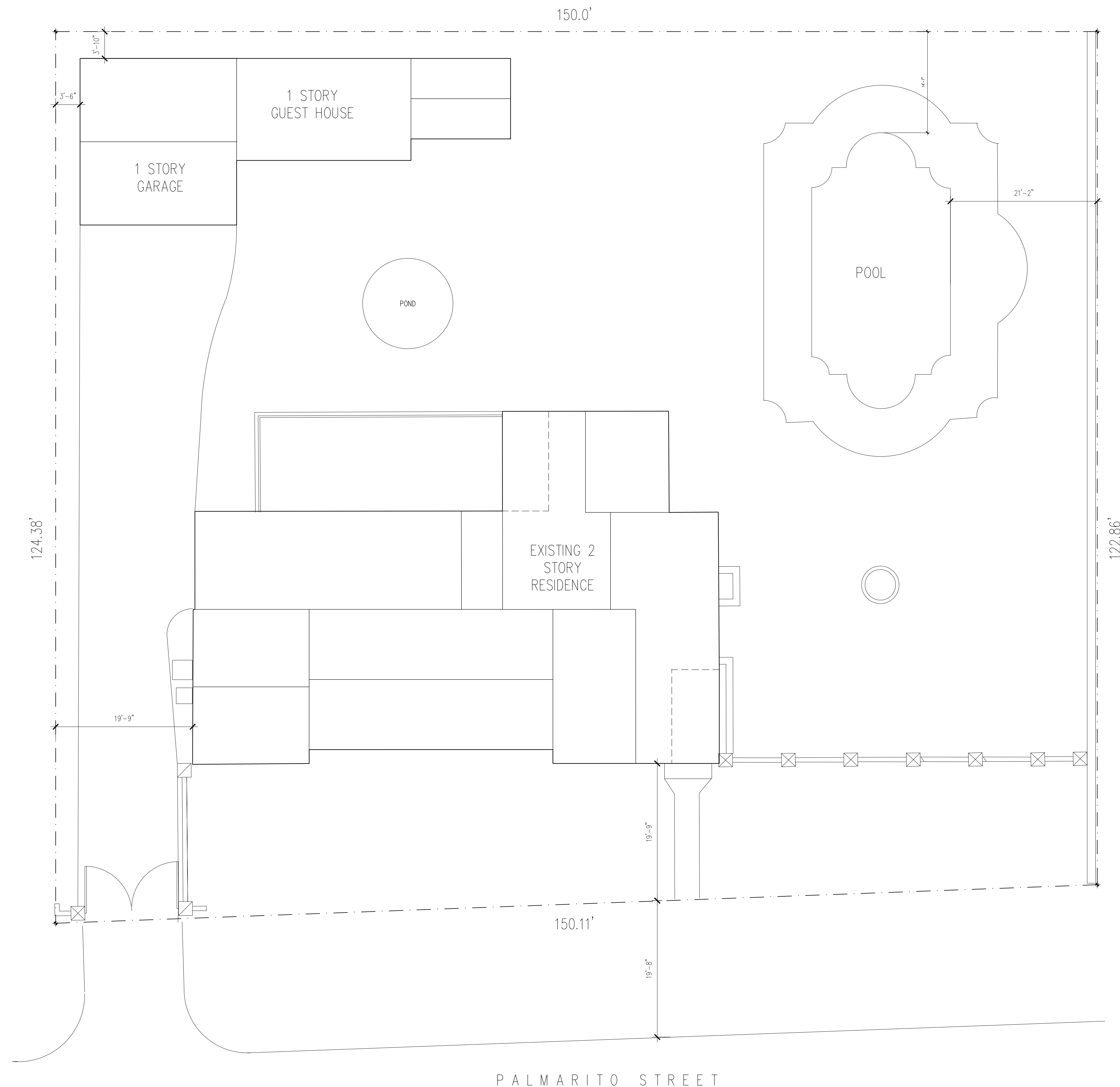


THE
CLEMENTI RESIDENCE
4400 PALMARITO STREET
ADDITION

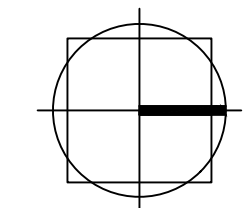


CALLUM GIBB ARCHITECT PA

FEBRUARY 2026



PROPOSED SITE PLAN 1/8"



DRAWING NOTES

DRAWING REVISIONS

THE CLEMENTI RES
4400 PALMARITO STREET
CORAL GABLES FLORIDA 33134

PROJECT NO: 25-101

EXISTING SITE PLAN

SCALE: 1/8"

A.1.1

DATE: 1.30.26

CALLUM GIBB ARCHITECT P.A.
ARCHITECTURE • PLANNING • INTERIORS

353 ALCAZAR AVENUE CORAL GABLES FLORIDA 33134
TEL: 305.445.7083 AR: 14751 callumgibb@architect.com



FRONT



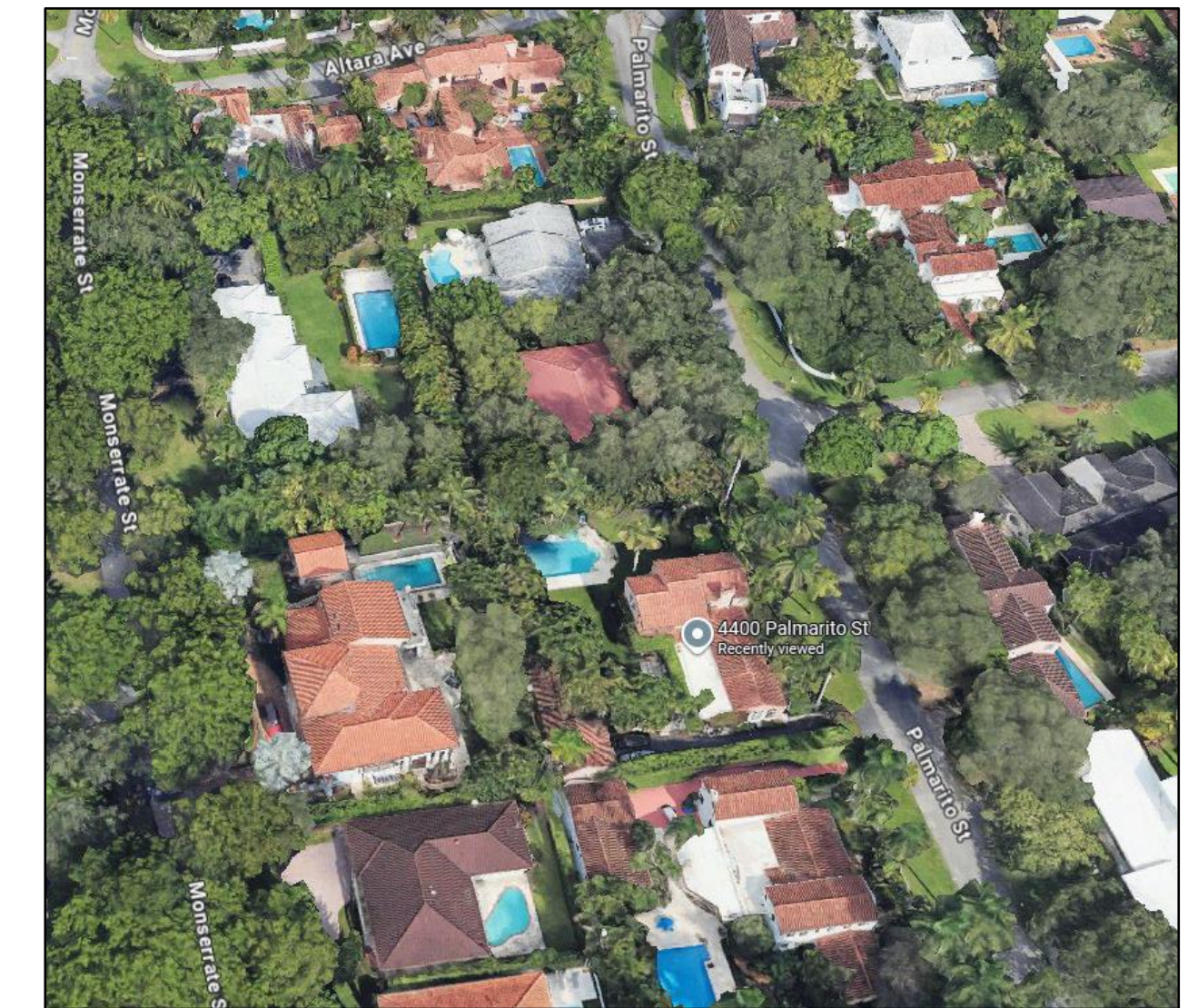
REAR



SOUTH SIDE



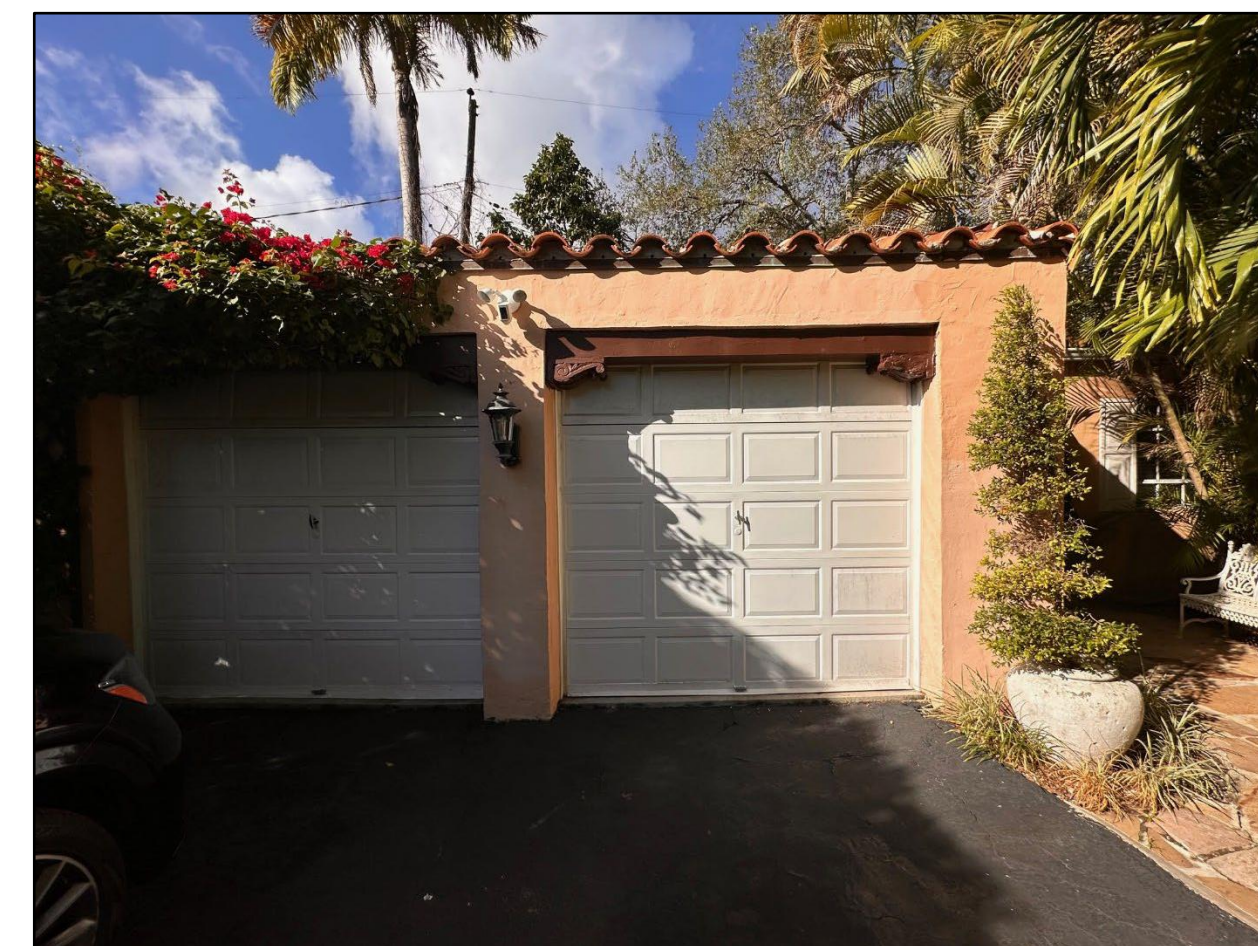
NORTH SIDE



AERIAL



SOUTH SIDE



GARAGE FRONT



FACING NEIGHBOR



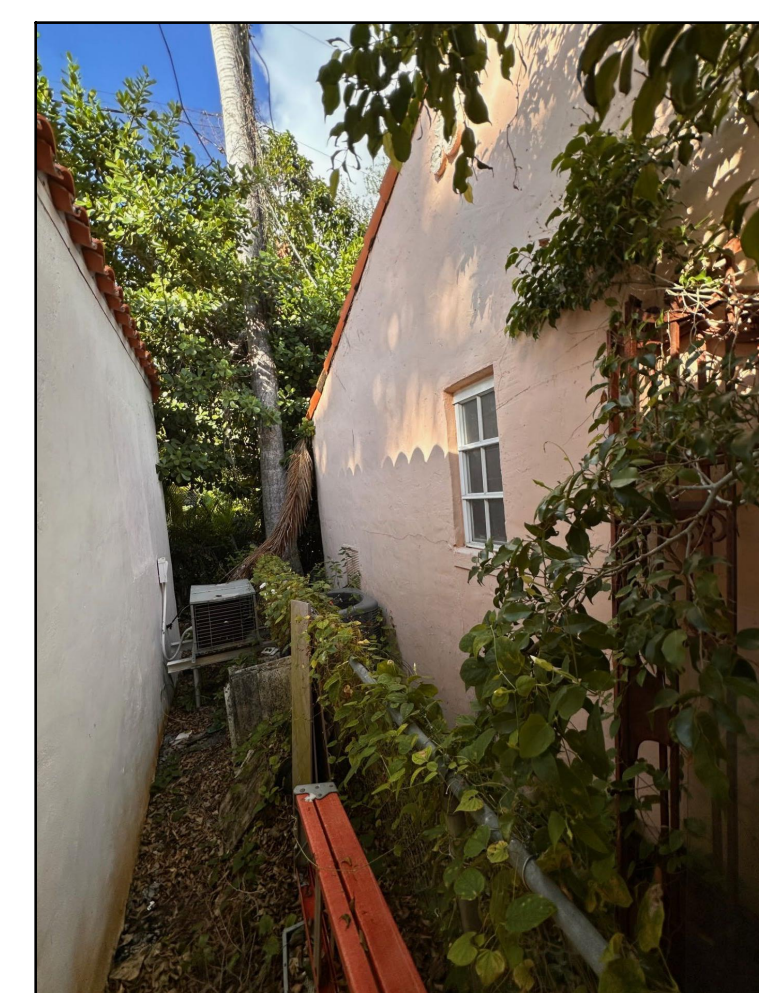
REAR DETAIL



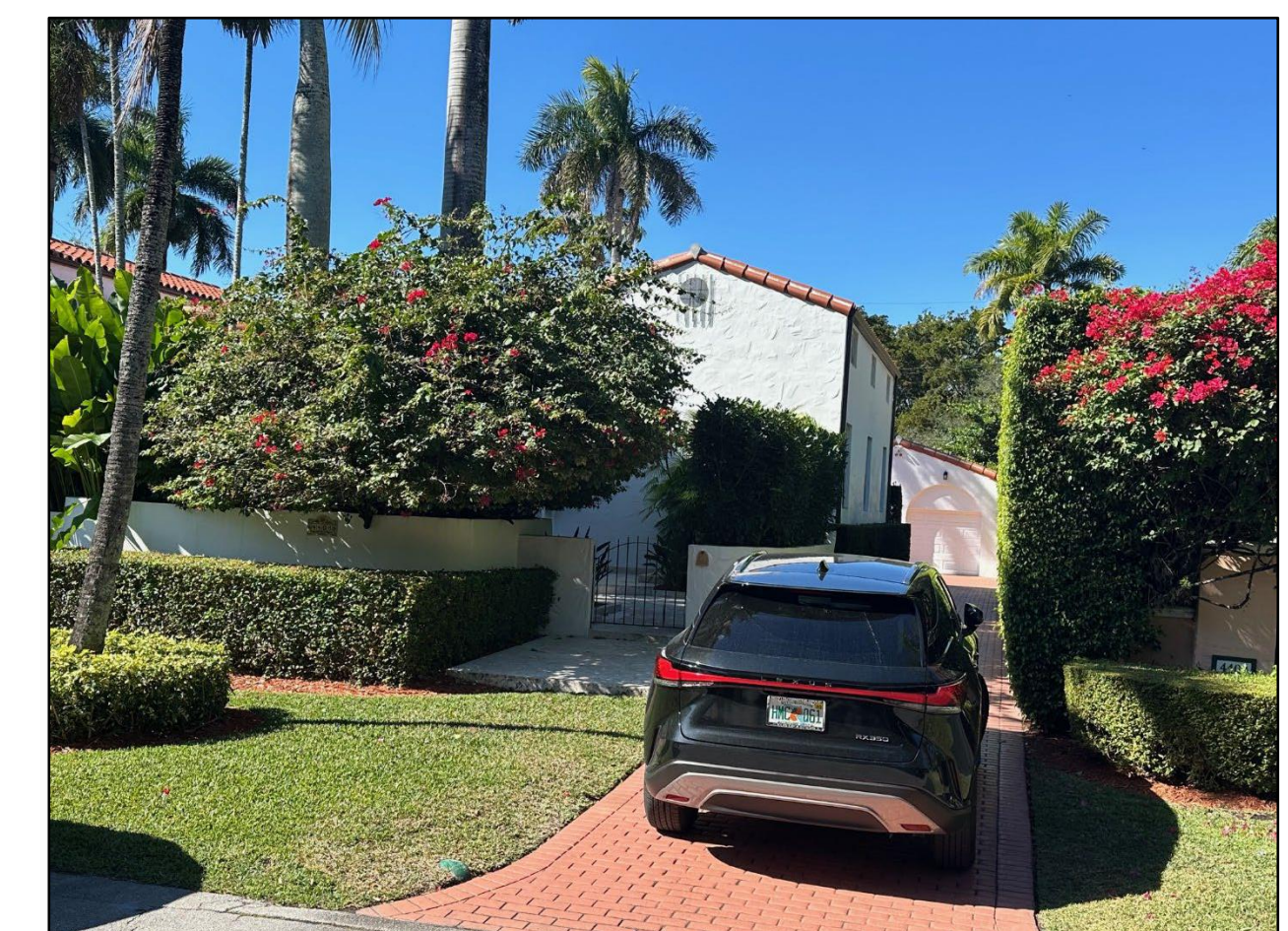
GUEST HOUSE ENTRY



GUEST HOUSE NORTH



GARAGE SOUTH SIDE



SOUTH NEIGHBOR

DRAWING NOTES

DRAWING REVISIONS

THE CLEMENTI RES
4400 PALMARITO STREET
CORAL GABLES FLORIDA 33134

PROJECT NO: 25-101

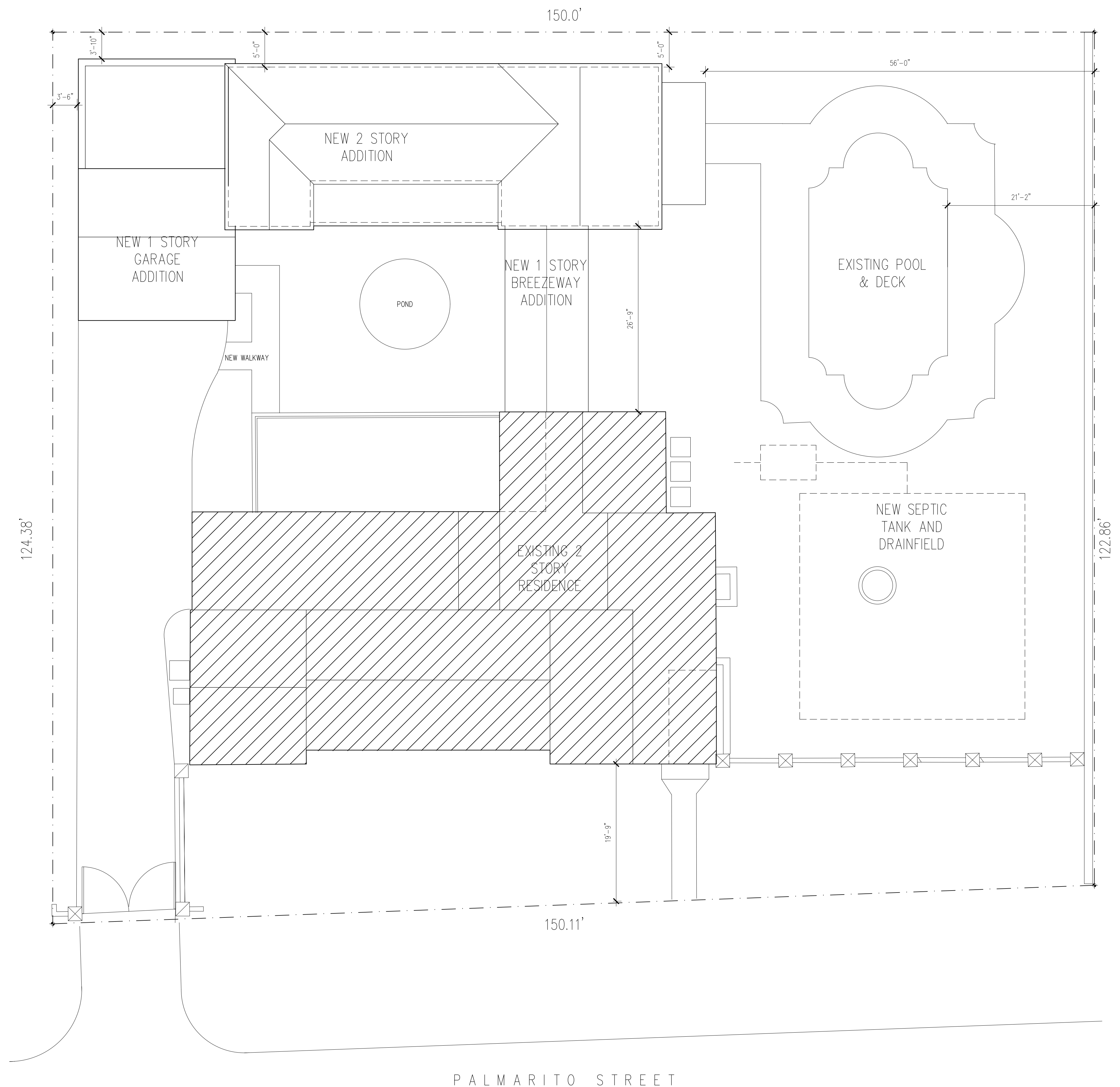
PHOTOGRAPHS

SCALE:

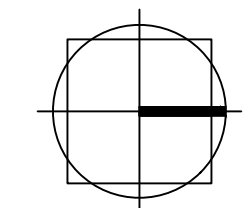
A.1.2

CALLUM GIBB ARCHITECT P.A.
ARCHITECTURE • PLANNING • INTERIORS

353 ALCAZAR AVENUE CORAL GABLES FLORIDA 33134
TEL: 305.445.7083 AR: 14751 callumgibb@architect.com



PROPOSED SITE PLAN 1/8"



DRAWING NOTES

DRAWING REVISIONS

THE CLEMENTI RES
4400 PALMARITO STREET
CORAL GABLES FLORIDA 33134

PROJECT NO: 25-101

SCALE: 1/8"

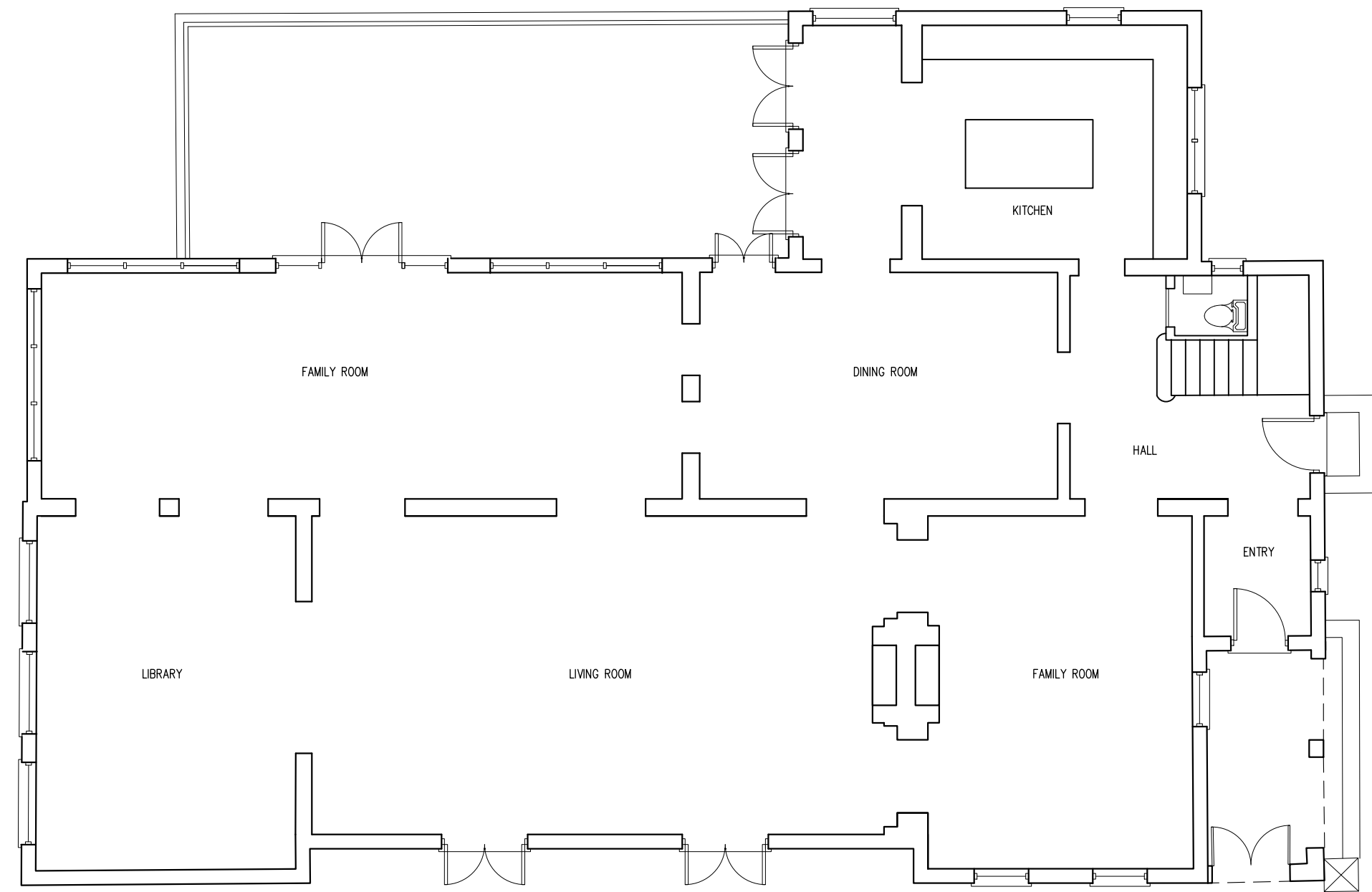
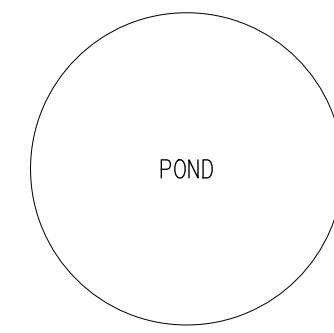
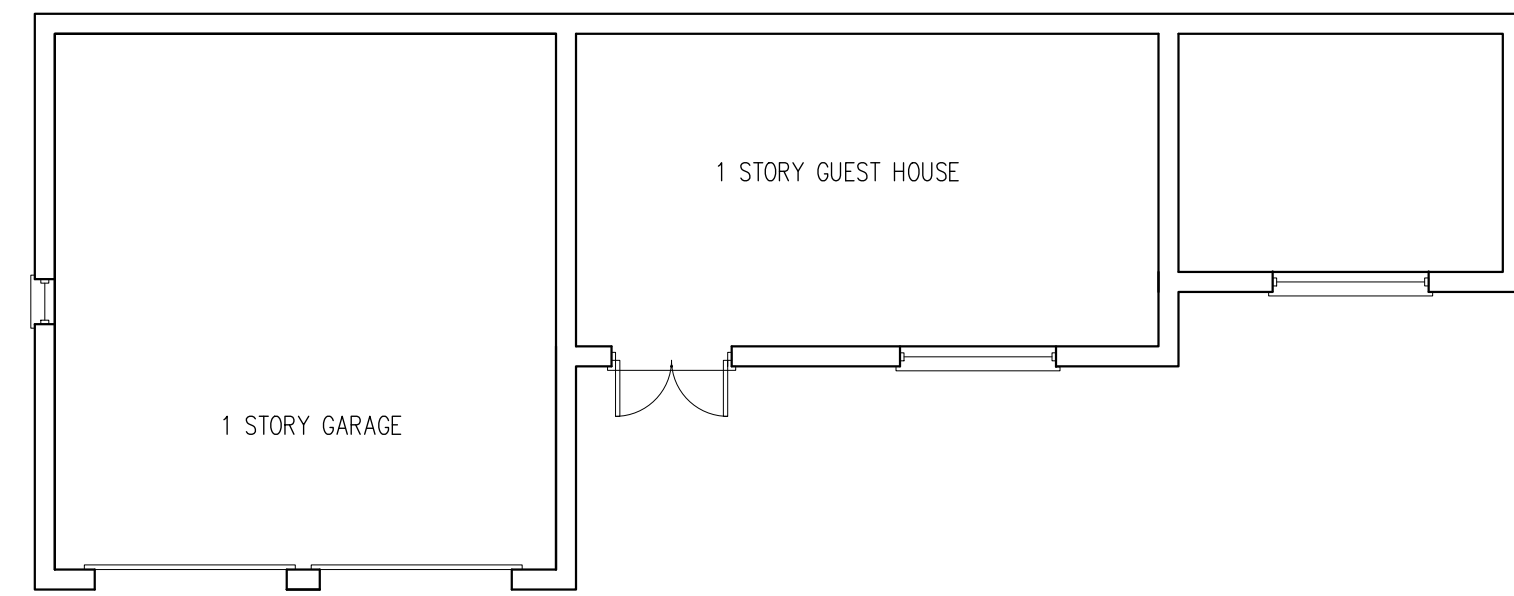
A.1.3

DATE: 1.30.26

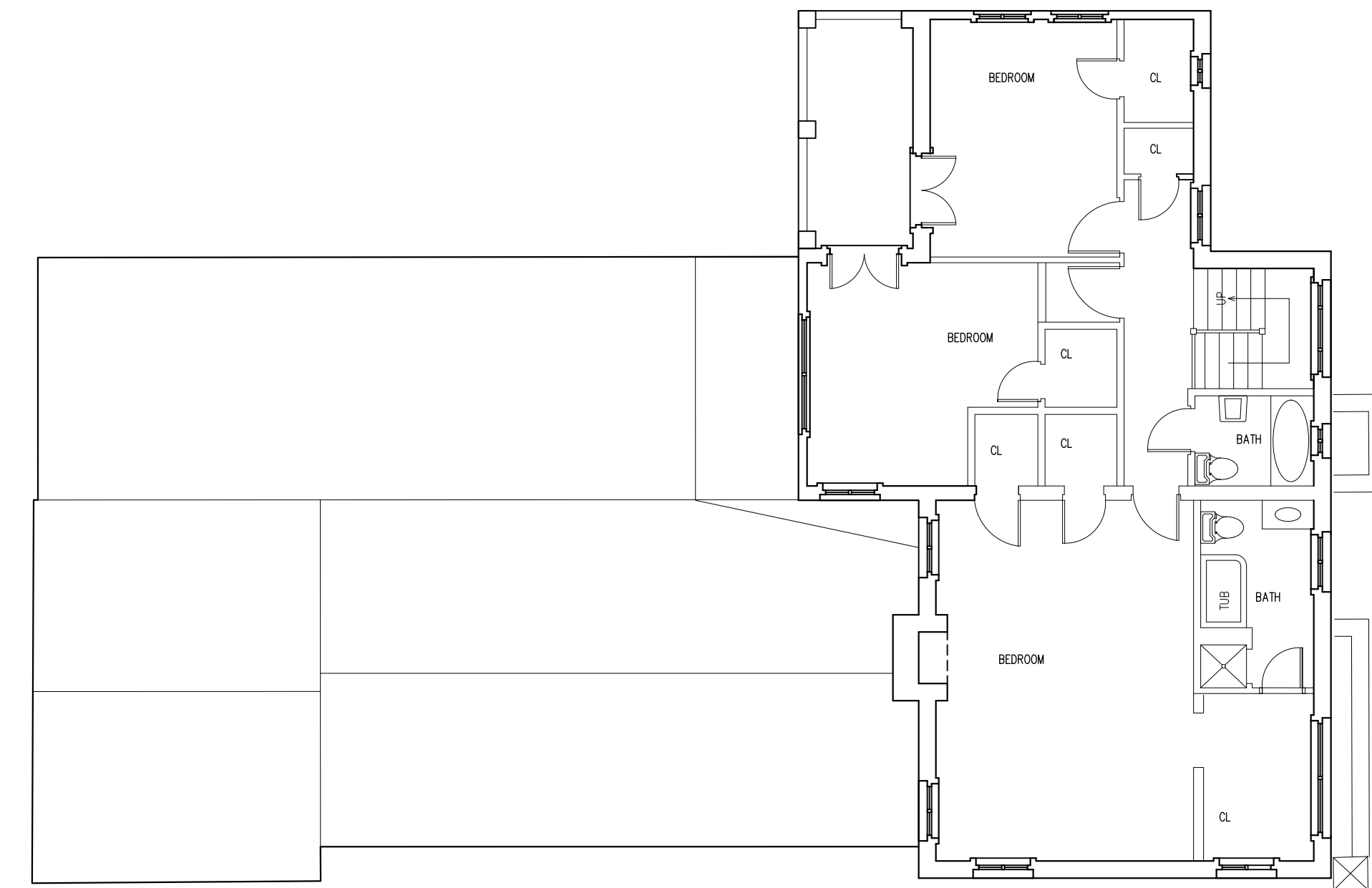
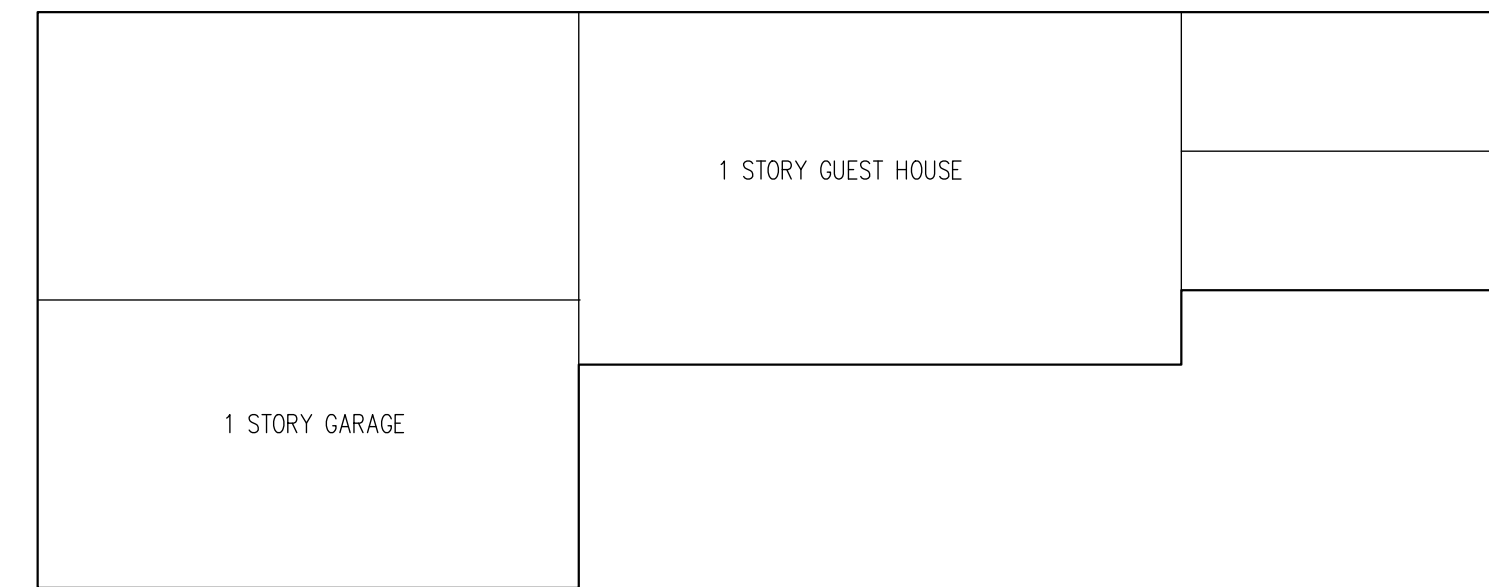
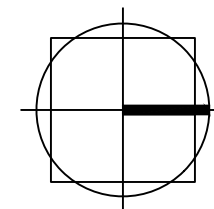
SITE PLAN

CALLUM GIBB ARCHITECT P.A.
ARCHITECTURE • PLANNING • INTERIORS

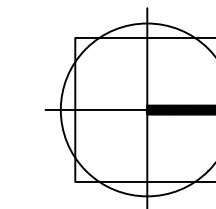
353 ALCAZAR AVENUE CORAL GABLES FLORIDA 33134
TEL: 305.445.7083 AR: 14751 callumgibb@architect.com



EXISTING GROUND FLOOR PLAN 1/8"



EXISTING SECOND FLOOR PLAN 1/8"



DRAWING NOTES

DRAWING REVISIONS

THE CLEMENTI RES
4400 PALMARITO STREET
CORAL GABLES FLORIDA 33134

PROJECT NO: 25-101

EXISTING FLOOR PLANS

SCALE: 1/8"

A.2.0

DATE: 1.30.26

CALLUM GIBB ARCHITECT P.A.
ARCHITECTURE • PLANNING • INTERIORS

353 ALCAZAR AVENUE CORAL GABLES FLORIDA 33134
TEL: 305.445.7083 AR: 14751 callumgibb@architect.com

DRAWING NOTES

DRAWING REVISIONS

THE CLEMENTI RES
4400 PALMARITO STREET
CORAL GABLES FLORIDA 33134

PROJECT NO: 25-101

FLOOR PLANS

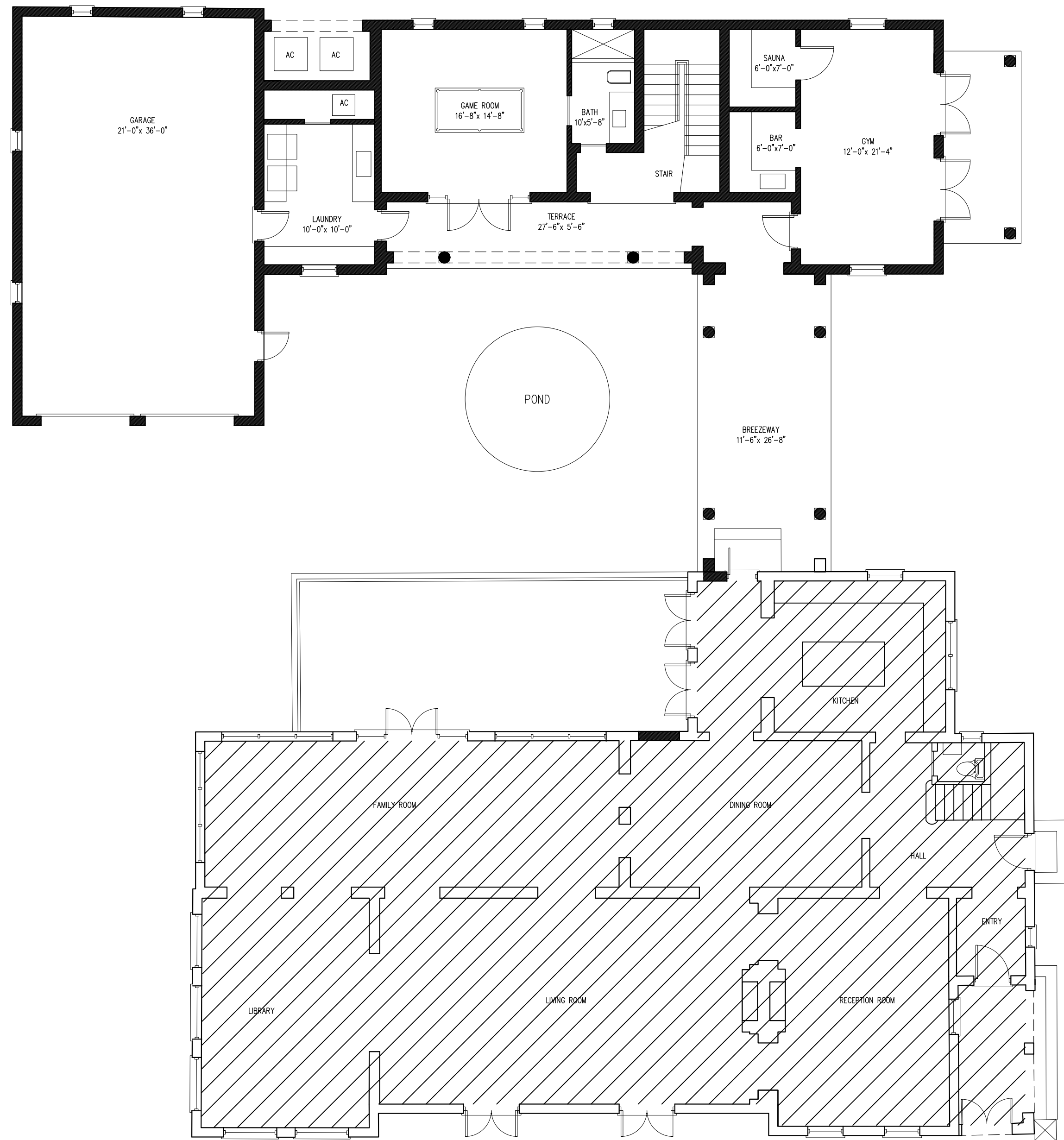
SCALE: 1/4"

A.2.1

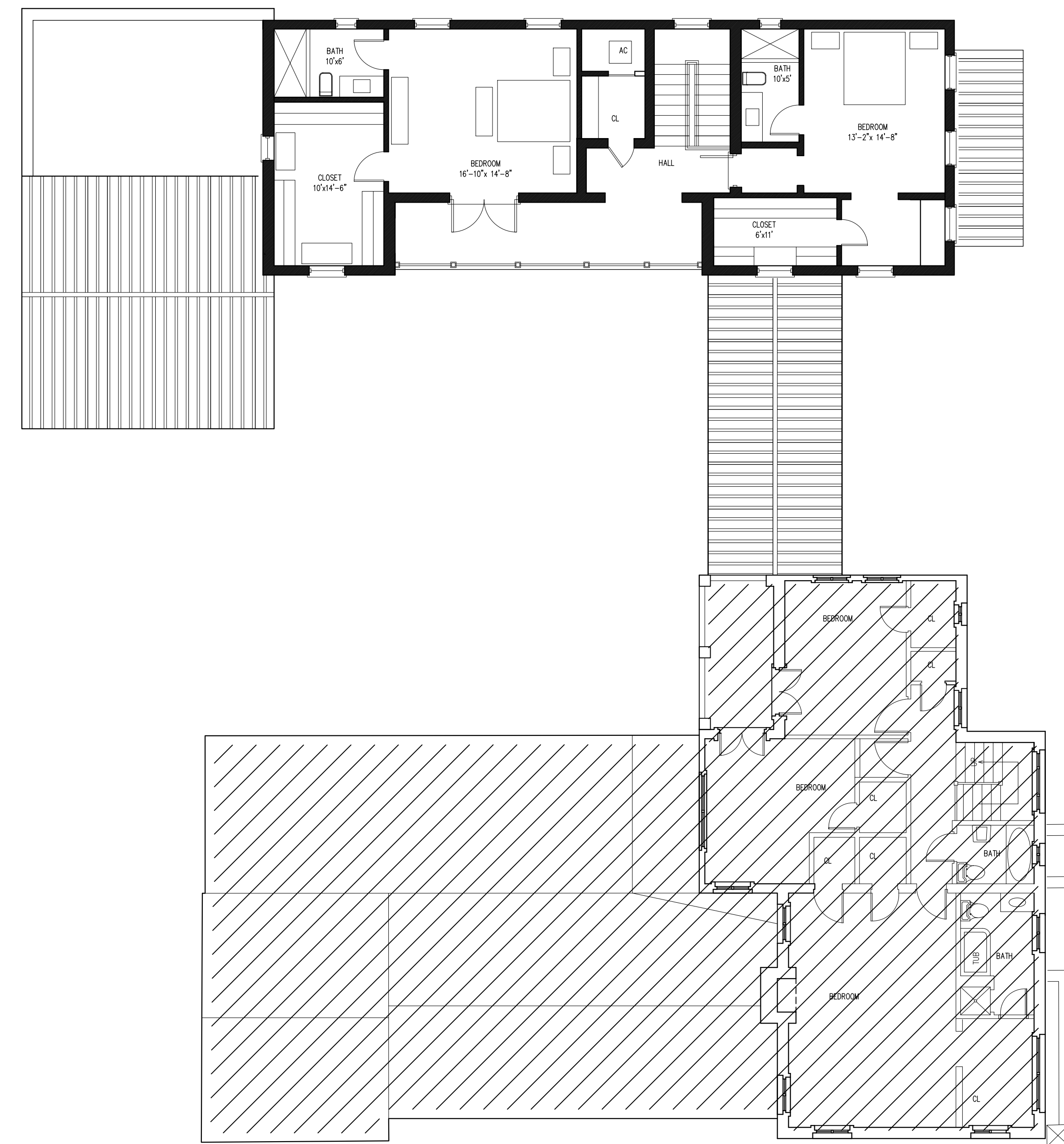
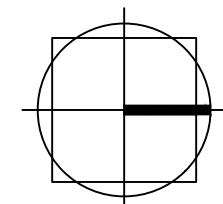
DATE: 1.30.26

CALLUM GIBB ARCHITECT P.A.
ARCHITECTURE • PLANNING • INTERIORS

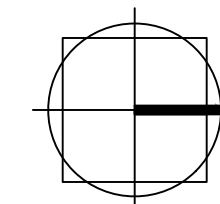
353 ALCAZAR AVENUE CORAL GABLES FLORIDA 33134
TEL: 305.445.7083 AR: 14751 callumgibb@architect.com

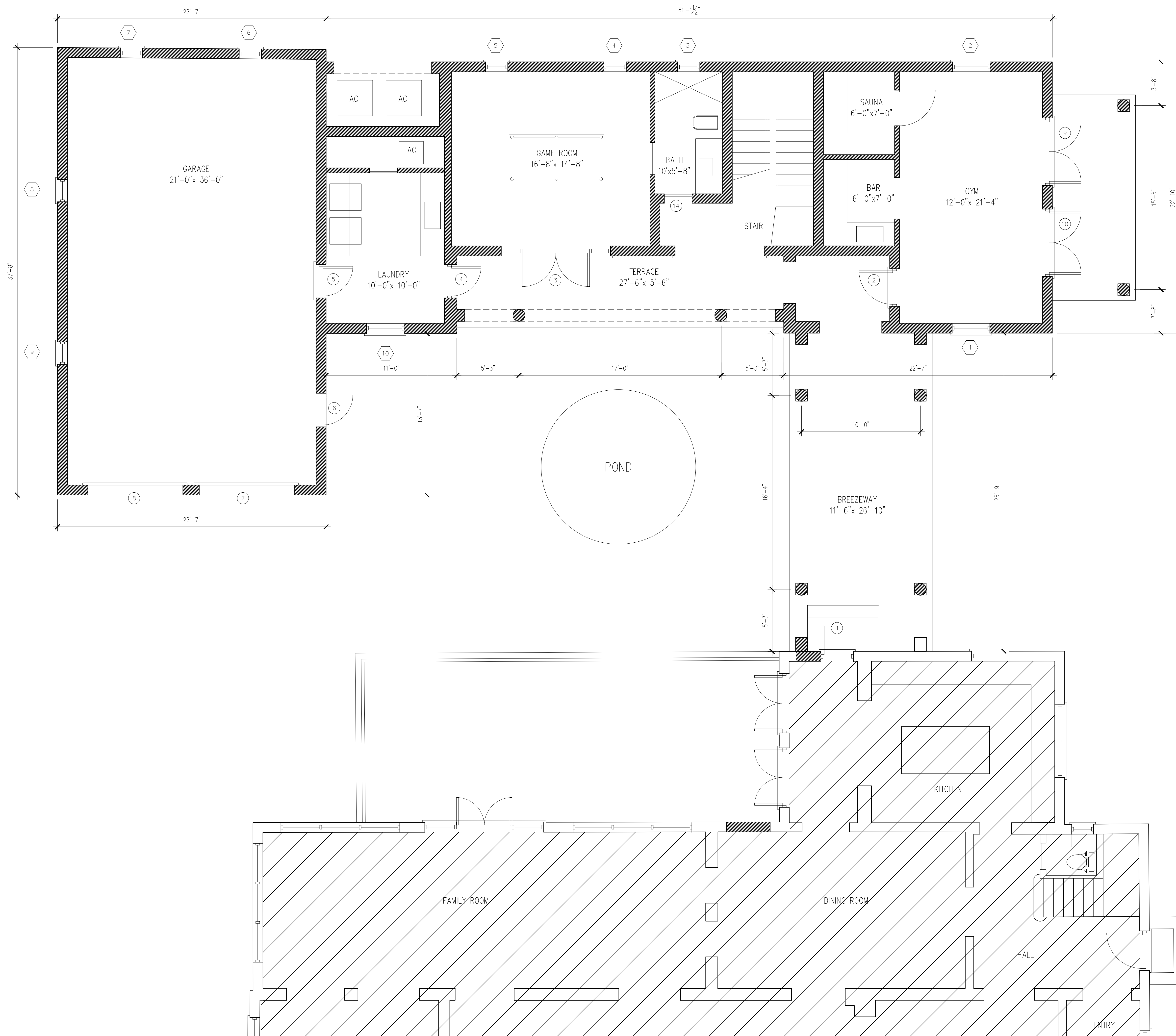


PROPOSED GROUND FLOOR PLAN 1/8"



PROPOSED SECOND FLOOR PLAN 1/8"





PROPOSED GROUND FLOOR PLAN 1/4"

DRAWING NOTES

DRAWING REVISIONS

THE CLEMENTI RES
4400 PALMARITO STREET
CORAL GABLES FLORIDA 33134

PROJECT NO: 25-101

GROUND FLOOR PLAN

SCALE: 1/4"

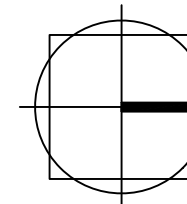
A.2.2

DATE: 1.30.26

CALLUM GIBB ARCHITECT P.A.
ARCHITECTURE • PLANNING • INTERIORS



PROPOSED SECOND FLOOR PLAN 1/4"



DRAWING NOTES

DRAWING REVISIONS

THE CLEMENTI RES
4400 PALMARITO STREET
CORAL GABLES FLORIDA 33134

PROJECT NO: 25-101

SECOND FLOOR PLAN

SCALE: 1/4"

A.2.3

DATE: 1.30.26

CALLUM GIBB ARCHITECT P.A.
ARCHITECTURE • PLANNING • INTERIORS

DRAWING NOTES

DRAWING REVISIONS

THE CLEMENTI RES
4400 PALMARITO STREET
CORAL GABLES FLORIDA 33134

PROJECT NO: 25-101

ELEVATIONS

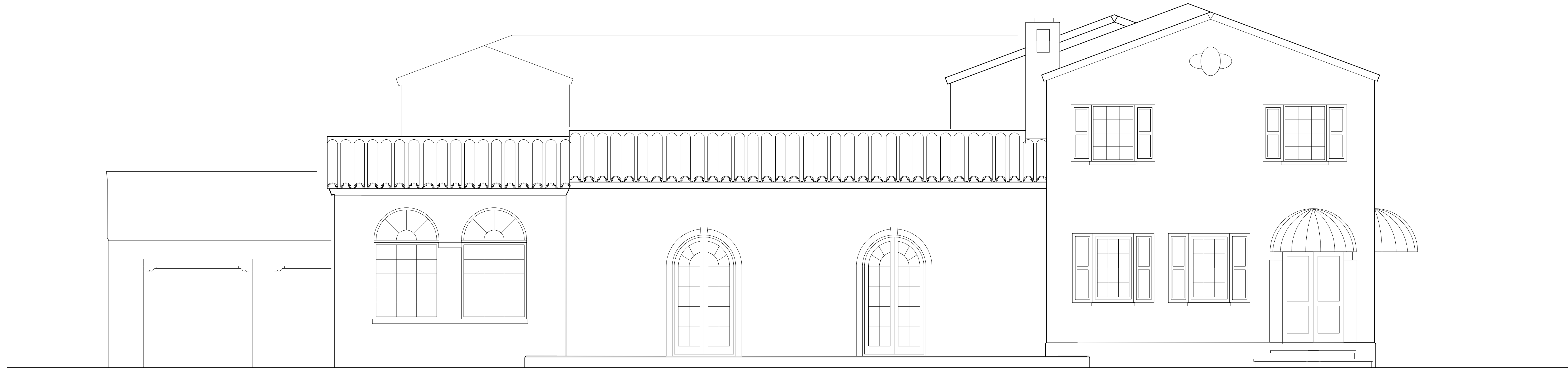
SCALE: 1/4"

A.3.1

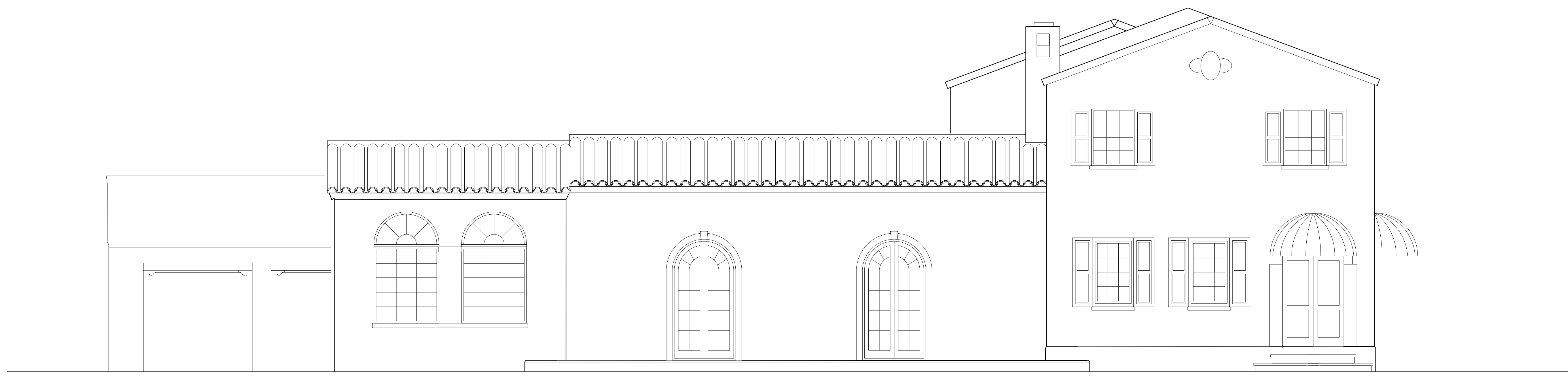
DATE: 1.30.26

CALLUM GIBB ARCHITECT P.A
ARCHITECTURE • PLANNING • INTERIORS

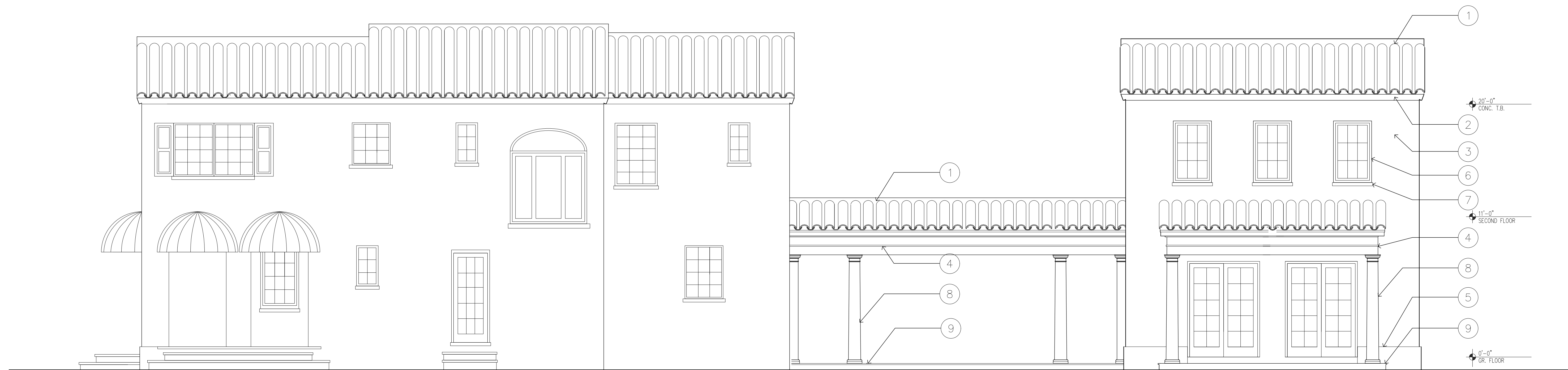
353 ALCAZAR AVENUE CORAL GABLES FLORIDA 33134
TEL: 305.445.7083 AR: 14751 callumgibb@architect.com



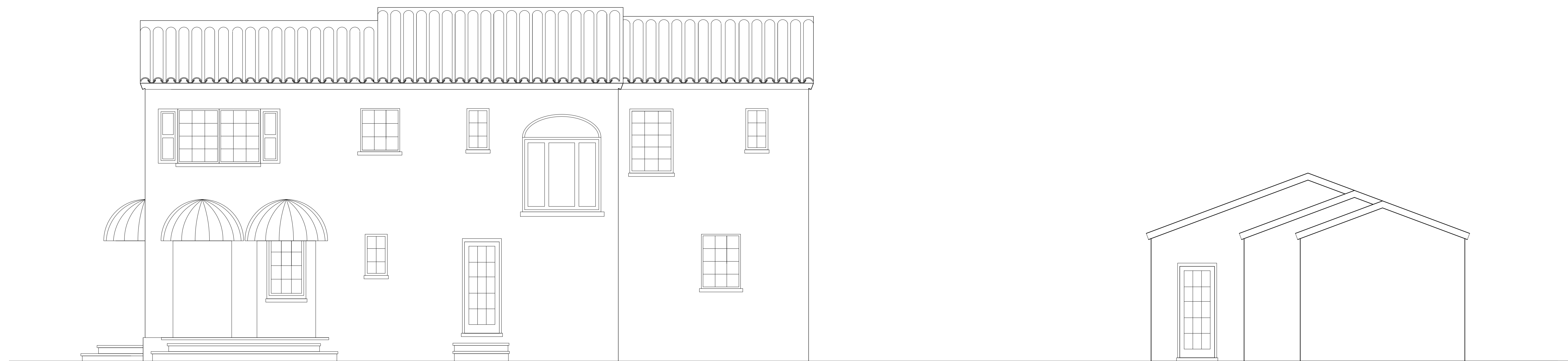
PROPOSED FRONT ELEVATION 1/4"



EXISTING FRONT ELEVATION 1/4"



PROPOSED NORTH ELEVATION 1/4"



EXISTING NORTH ELEVATION 1/4"

DRAWING NOTES

- 1 BARREL TILE ROOF TO MATCH EXISTING
- 2 WOOD SOFFIT
- 3 SMOOTH STUCCO FINISH
- 4 SMOOTH CAST CONC. MOLDINGS WITH PAINTED STUCCO WASH FINISH
- 5 1.5" STUCCO PLINTH
- 6 CASEMENT WINDOWS
- 7 1.25" x 4" PROFILE STUCCO SILL
- 8 SMOOTH PRECAST COLUMNS BY CHADSWORTH COLUMNS
- 9 STONE STEPS

DRAWING REVISIONS

THE CLEMENTI RES
4400 PALMARITO STREET
CORAL GABLES FLORIDA 33134

PROJECT NO: 25-101

ELEVATIONS

SCALE: 1/4"

A.3.2

DATE: 1.30.26

CALLUM GIBB ARCHITECT P.A.
ARCHITECTURE • PLANNING • INTERIORS

DRAWING NOTES



PROPOSED SOUTH ELEVATION 1/4"



EXISTING SOUTH ELEVATION 1/4"

DRAWING REVISIONS

THE CLEMENTI RES
4400 PALMARITO STREET
CORAL GABLES FLORIDA 33134

PROJECT NO: 25-101

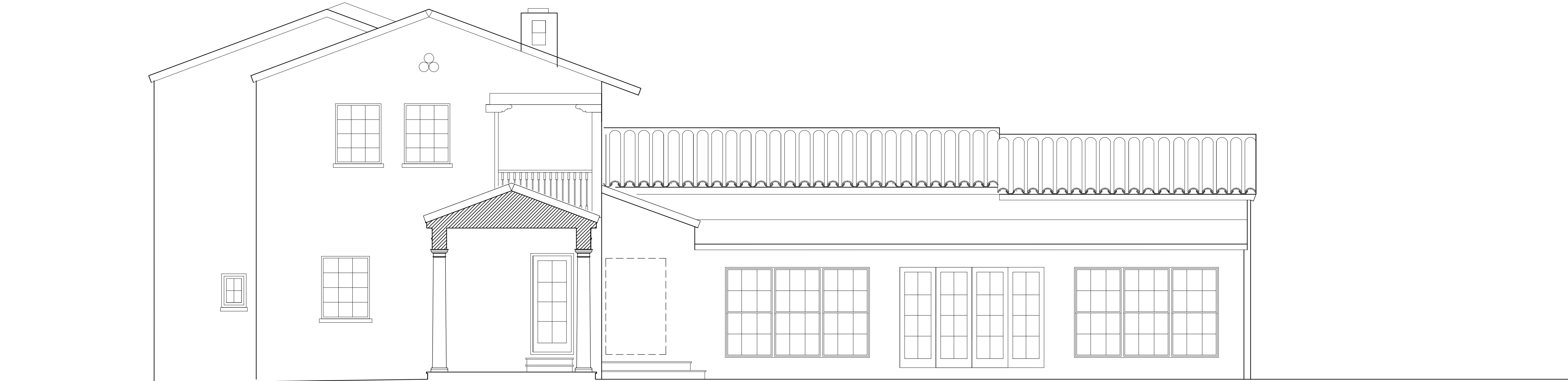
ELEVATIONS

SCALE: 1/4"

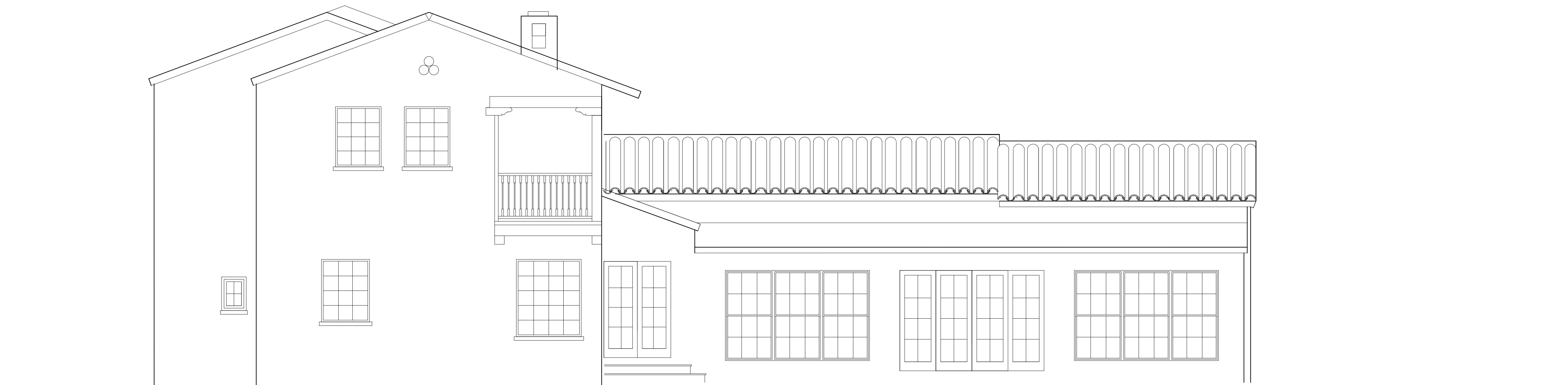
A.3.3

DATE: 1.30.26

CALLUM GIBB ARCHITECT P.A.
ARCHITECTURE • PLANNING • INTERIORS



PROPOSED REAR ELEVATION 1/4"



EXISTING REAR ELEVATION 1/4"

DRAWING NOTES

DRAWING REVISIONS

THE CLEMENTI RES
4400 PALMARITO STREET
CORAL GABLES FLORIDA 33134

PROJECT NO: 25-101

ELEVATIONS

SCALE: 1/4"

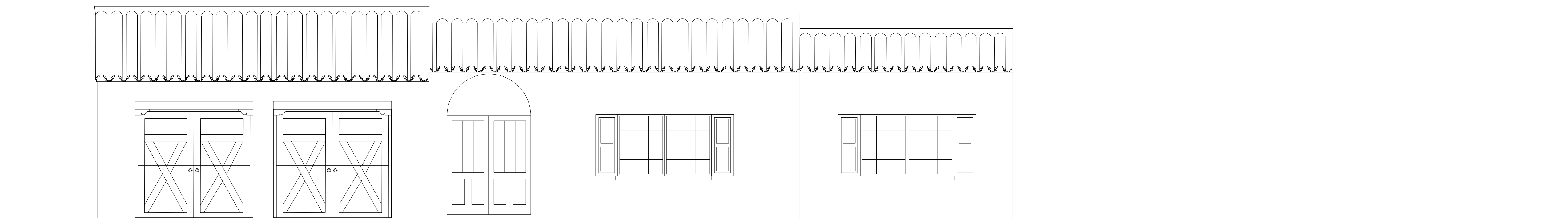
A.3.4

DATE: 1.30.26

CALLUM GIBB ARCHITECT P.A.
ARCHITECTURE • PLANNING • INTERIORS



PROPOSED ADDITION ELEVATION 1/4"



EXISTING GARAGE ELEVATION 1/4"

DRAWING NOTES

- 1 BARREL TILE ROOF TO MATCH EXISTING
- 2 WOOD SOFFIT
- 3 SMOOTH STUCCO FINISH
- 4 SMOOTH CAST CONC. MOLDINGS WITH PAINTED STUCCO WASH FINISH
- 5 1.5" STUCCO PLINTH
- 6 CASEMENT WINDOWS
- 7 1.25" x 4" PROFILE STUCCO SILL
- 8 SMOOTH PRECAST COLUMNS BY CHADSWORTH COLUMNS
- 9 STONE STEPS
- 10 ALUMINUM PICKET RAILINGS

DRAWING REVISIONS

THE CLEMENTI RES
4400 PALMARITO STREET
CORAL GABLES FLORIDA 33134

PROJECT NO: 25-101

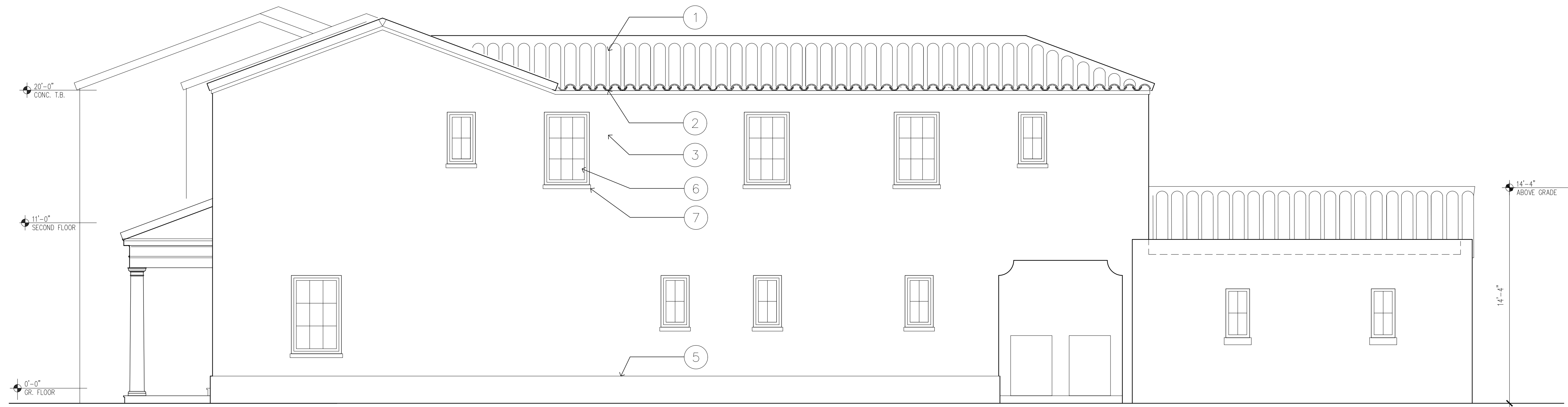
ELEVATIONS

SCALE: 1/4"

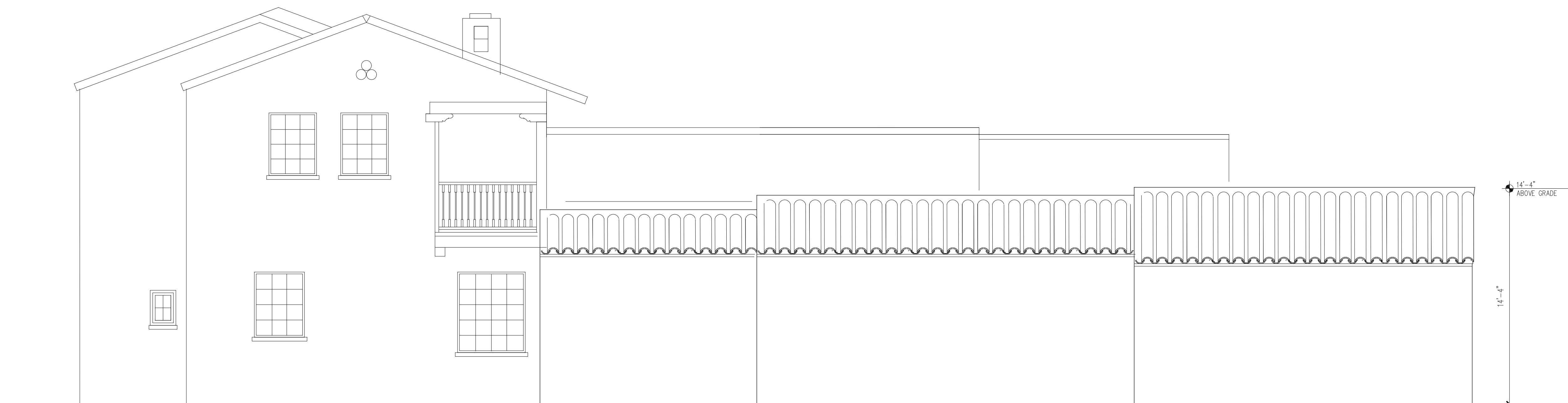
A.3.5

DATE: 1.30.26

CALLUM GIBB ARCHITECT P.A.
ARCHITECTURE • PLANNING • INTERIORS



PROPOSED ADDITION REAR ELEVATION 1/4"



EXISTING GARAGE REAR ELEVATION 1/4"

DRAWING NOTES

- 1 BARREL TILE ROOF TO MATCH EXISTING
- 2 WOOD SOFFIT
- 3 SMOOTH STUCCO FINISH
- 4 SMOOTH CAST CONC. MOLDINGS WITH PAINTED STUCCO WASH FINISH
- 5 1.5" STUCCO PLINTH
- 6 CASEMENT WINDOWS
- 7 1.25" x 4" PROFILE STUCCO SILL
- 8 SMOOTH PRECAST COLUMNS BY CHADSWORTH COLUMNS
- 9 STONE STEPS

DRAWING REVISIONS

THE CLEMENTI RES
4400 PALMARITO STREET
CORAL GABLES FLORIDA 33134

PROJECT NO: 25-101

ELEVATIONS

SCALE: 1/4"

A.3.6

DATE: 1.30.26

CALLUM GIBB ARCHITECT P.A.
ARCHITECTURE • PLANNING • INTERIORS



PROPOSED ADDITION SECTION 1/4"

DRAWING NOTES

DRAWING REVISIONS

THE CLEMENTI RES
4400 PALMARITO STREET
CORAL GABLES FLORIDA 33134

PROJECT NO: 25-101

SECTIONS

SCALE: 1/4"

A.4.1

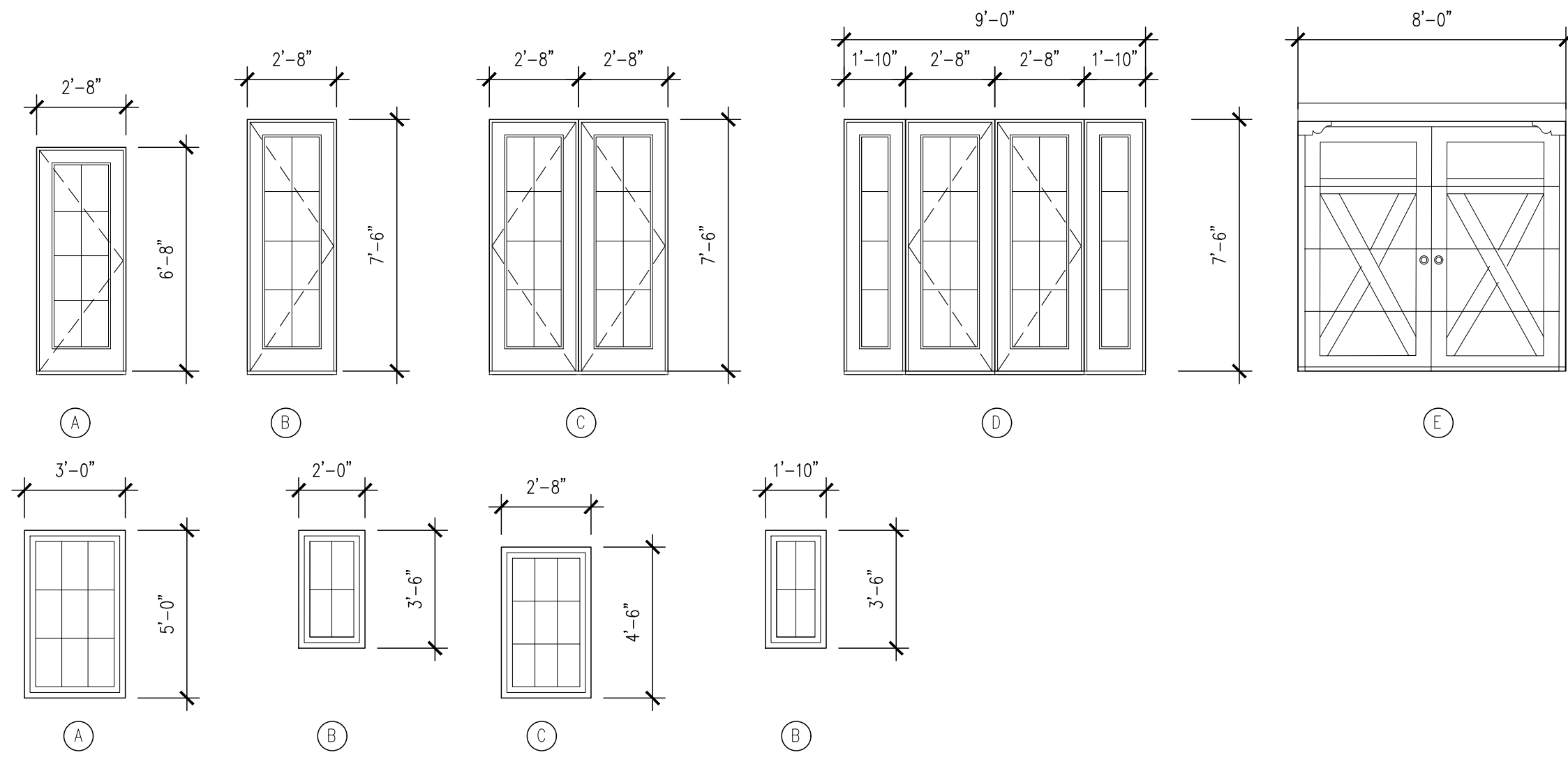
DATE: 1.30.26

CALLUM GIBB ARCHITECT P.A.
ARCHITECTURE • PLANNING • INTERIORS

EXTERIOR DOOR SCHEDULE

WHITE FRAMES AND CLEAR GLASS TO MATCH EXISTING HI PROFILE MUNTINS

NO.	LOCATION	WIDTH	HEIGHT	TYPE	ELEV.	FRAME MAT.	DOOR MAT.	THRESHOLD	WIND LOAD	REMARKS	PROD. APP. NO.
1	KITCHEN	2'-8"	6'-8"	FRENCH DOOR	A	ALUMINUM	ALUMINUM	ALUMINUM			FL 15444
2	GYM	2'-8"	8'-8"	FRENCH DOOR	B	ALUMINUM	ALUMINUM	ALUMINUM			
3	GAME ROOM	9'-0" (2x2'-8" WITH 2 1'-10" SIDELITES)	7'-6"	FRENCH DOOR	D	ALUMINUM	ALUMINUM	ALUMINUM			
4	LAUNDRY	2'-8"	7'-6"	FRENCH DOOR	B	ALUMINUM	ALUMINUM	ALUMINUM			
5	LAUNDRY	2'-8"	7'-6"	FRENCH DOOR	B	ALUMINUM	ALUMINUM	ALUMINUM			
6	GARAGE	2'-8"	7'-6"	FRENCH DOOR	B	ALUMINUM	ALUMINUM	ALUMINUM			
7	GARAGE	8'-0"	7'-6"	FOLD UP GARAGE DOOR	E						
8	GARAGE	8'-0"	7'-6"	FOLD UP GARAGE DOOR	E						
9	GYM	5'-4" (2x2'-8")	7'-6"	FRENCH DOOR	C	ALUMINUM	ALUMINUM	ALUMINUM			
10	GYM	5'-4" (2x2'-8")	7'-6"	FRENCH DOOR	C	ALUMINUM	ALUMINUM	ALUMINUM			
11	BEDROOM 1	5'-4" (2x2'-8")	7'-6"	FRENCH DOOR	C	ALUMINUM	ALUMINUM	ALUMINUM			
12	BEDROOM 2	2'-8"	6'-8"	FRENCH DOOR	B	ALUMINUM	ALUMINUM	ALUMINUM			
13	BATH 2	2'-8"	6'-8"	FRENCH DOOR	B	ALUMINUM	ALUMINUM	ALUMINUM			
14	BATH 3	2'-8"	6'-8"	FRENCH DOOR	B	ALUMINUM	ALUMINUM	ALUMINUM			



WINDOW SCHEDULE

WHITE FRAMES AND CLEAR GLASS HI PROFILE MUNTINS

NO.	LOCATION	WIDTH	HEIGHT	TYPE	ELEV.	FRAME MAT.	REMARKS	PROD. APP. NO.
1	GYM	36"	60"	CASEMENT	A			
2	GYM	36"	60"	CASEMENT	A			
3	BATH 3	24"	42"	CASEMENT	B			
4	GAME ROOM	24"	42"	CASEMENT	B			
5	GAME ROOM	24"	42"	CASEMENT	B			
6	GARAGE	24"	42"	CASEMENT	D			
7	GARAGE	24"	42"	CASEMENT	D			
8	GARAGE (EXISTING OPENING)	22"	42"	CASEMENT	D			
9	GARAGE	24"	42"	CASEMENT	D			
10	LAUNDRY	32"	54"	CASEMENT	C			
11	CLOSET	32"	54"	CASEMENT	A			
12	CLOSET	32"	54"	CASEMENT	C			
13	BEDROOM 2	32"	54"	CASEMENT	C			
14	BEDROOM 2	32"	54"	CASEMENT	C			
15	BEDROOM 2	32"	54"	CASEMENT	C			
16	BEDROOM 2	32"	54"	CASEMENT	C			
17	BATH 2	24"	42"	CASEMENT	B			
18	STAIR	32"	54"	CASEMENT	C			
19	BEDROOM 1	32"	54"	CASEMENT	C			
20	BEDROOM 1	32"	54"	CASEMENT	C			
21	BATHROOM 1	32"	54"	CASEMENT	C			
22	CLOSET	24"	42"	CASEMENT	B			

DRAWING NOTES

DRAWING REVISIONS

THE CLEMENTI RES
4400 PALMARITO STREET
CORAL GABLES FLORIDA 33134

PROJECT NO: 25-101

DOOR AND WINDOW
SCHEDULES

SCALE: 1/4"

A.5.1

DATE: 1.30.26

CALLUM GIBB ARCHITECT P A
ARCHITECTURE • PLANNING • INTERIORS