

PLEASE NOTE:
ALL UNITS NOT MARKED ARE
EXISTING TO REMAIN, NOT IN
SCOPE/CONTRACT, OR BY OTHERS

clearChoice
Windows & Doors
2184 NW 89th Place
Doral, Florida 33172
Tel: (305) 259-6899
Fax: (305) 278-8449
german@cimpact.com

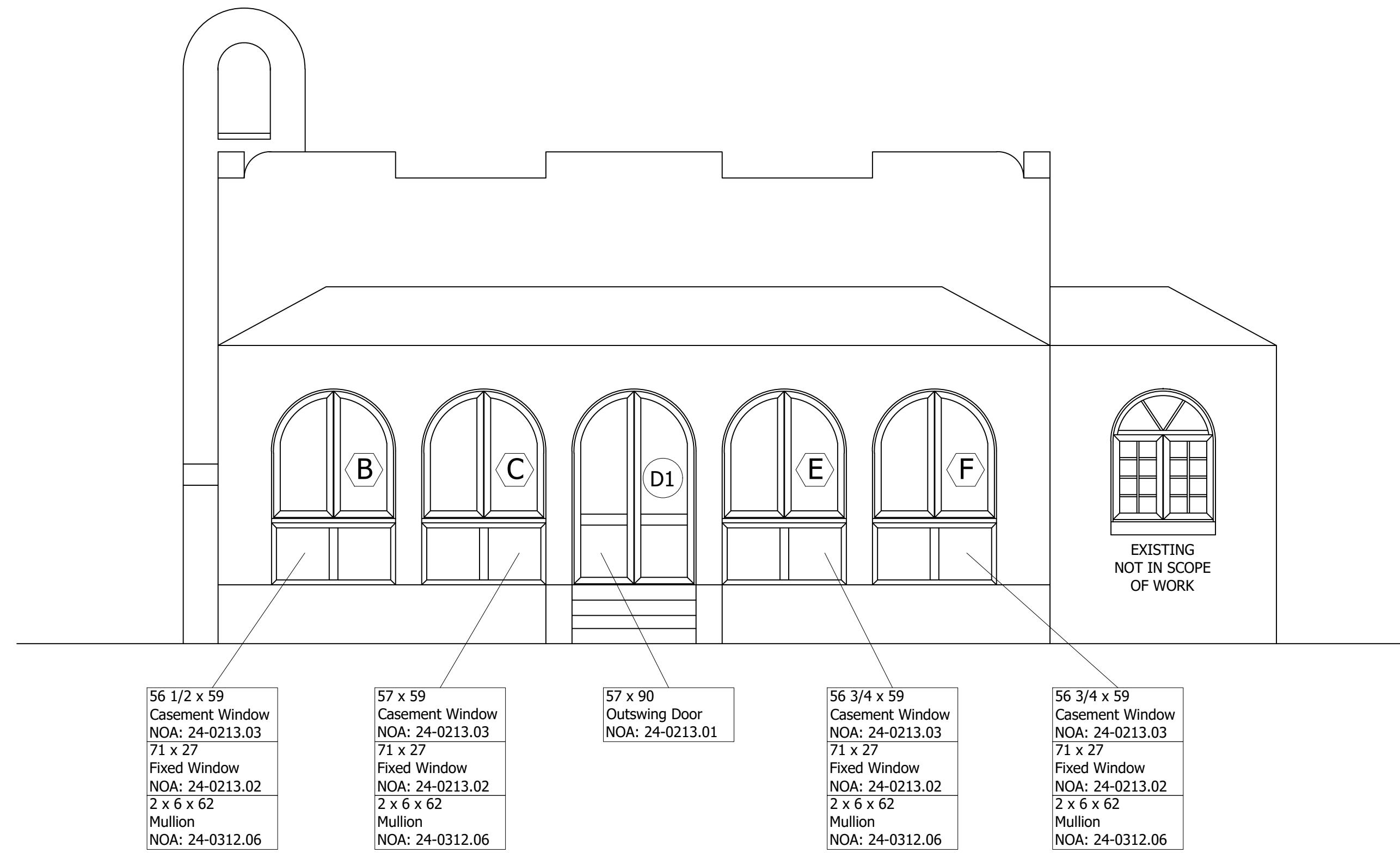
547 Alcazar Residence
547 Alcazar Ave,
Coral Gables, FL 34134

DATE: 03/11/26
SCALE: 1/4"=1'-0"
DRAWN BY: MR
REVISED BY: RA

SHEET NO.

1

1 OF 2

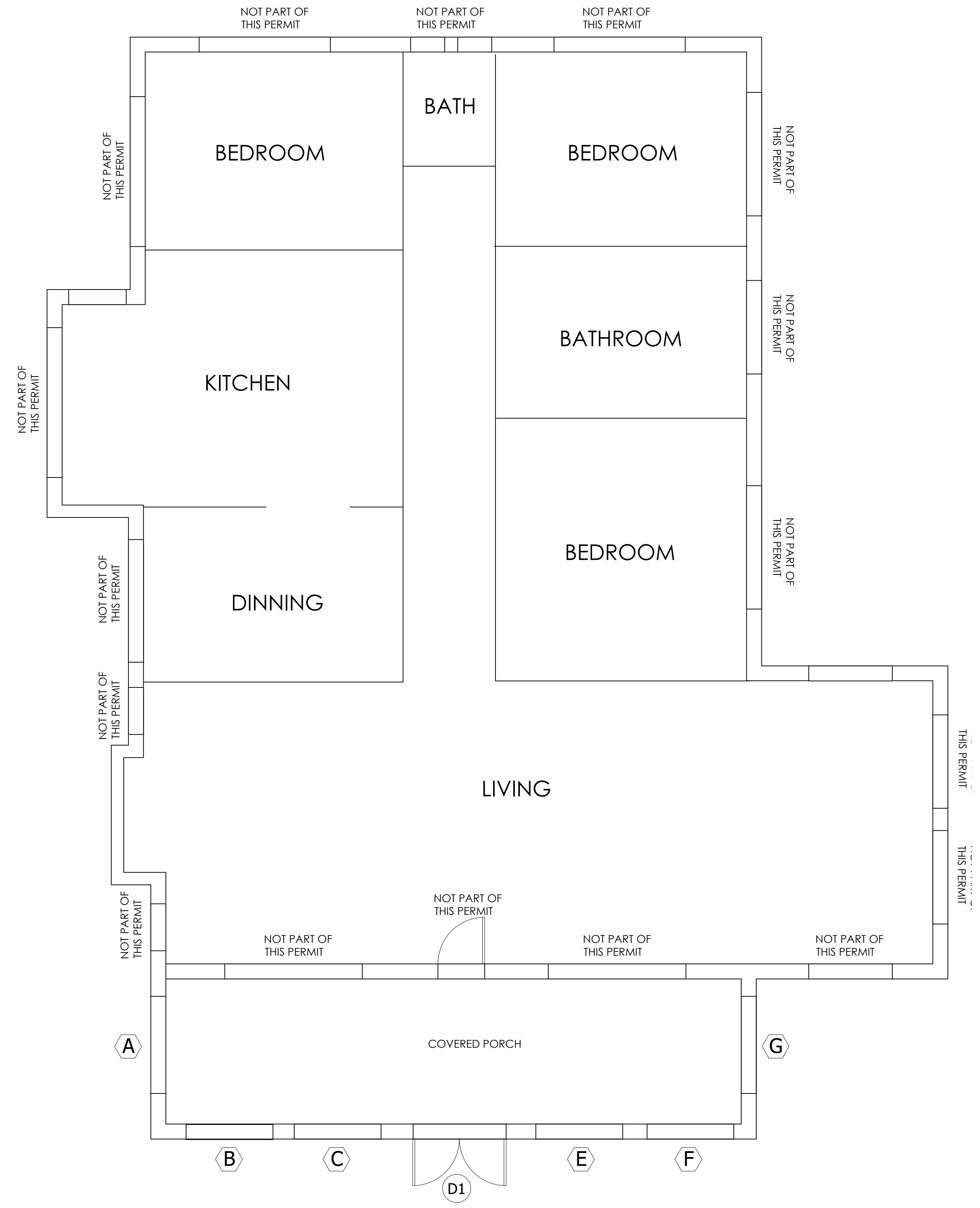


FRONT (SOUTH) ELEVATION

WINDOW & DOOR SCHEDULE

QTY	Mark	Location	Size	Area	Type	Alum. Color Finish	Glass Color	Allowable Wind Loads	Zone	Brand	Approval	Note
1	A	Covered Porch	71 x 59	29	Casement Window	Black	Clear	+75 -75	5	Officina/Korus	NOA: 24-0213.03	
1	A	Covered Porch	71 x 27	13 1/3	Fixed Window	Black	Clear	+80 -80	5	Officina/Korus	NOA: 24-0213.02	
1	A	Covered Porch	2 x 4 x 72	0	Mullion	Black	Clear	+81 -81	5	ESW	NOA: 24-0312.06	
1	B	Covered Porch	56 1/2 x 59	23 1/7	Casement Window	Black	Clear	+75 -75	5	Officina/Korus	NOA: 24-0213.03	
1	B	Covered Porch	71 x 27	13 1/3	Fixed Window	Black	Clear	+80 -80	5	Officina/Korus	NOA: 24-0213.02	
1	B	Covered Porch	2 x 4 x 62	0	Mullion	Black	Clear	+114.3 -114.3	5	ESW	NOA: 24-0312.06	
1	C	Covered Porch	57 x 59	23 1/3	Casement Window	Black	Clear	+75 -75	4	Officina/Korus	NOA: 24-0213.03	
1	C	Covered Porch	71 x 27	13 1/3	Fixed Window	Black	Clear	+80 -80	4	Officina/Korus	NOA: 24-0213.02	
1	C	Covered Porch	2 x 4 x 62	0	Mullion	Black	Clear	+114.3 -114.3	4	ESW	NOA: 24-0312.06	
1	D1	Covered Porch	57 x 90	35 5/8	Outswing French Door	Black	Clear	+60 -60	4	Officina/Korus	NOA: 24-0213.01	
1	E	Covered Porch	56 3/4 x 59	23 1/4	Casement Window	Black	Clear	+75 -75	4	Officina/Korus	NOA: 24-0213.03	
1	E	Covered Porch	71 x 27	13 1/3	Fixed Window	Black	Clear	+80 -80	4	Officina/Korus	NOA: 24-0213.02	
1	E	Covered Porch	2 x 4 x 62	0	Mullion	Black	Clear	+114.3 -114.3	4	ESW	NOA: 24-0312.06	
1	F	Covered Porch	56 3/4 x 59	23 1/4	Casement Window	Black	Clear	+75 -75	5	Officina/Korus	NOA: 24-0213.03	
1	F	Covered Porch	71 x 27	13 1/3	Fixed Window	Black	Clear	+80 -80	5	Officina/Korus	NOA: 24-0213.02	
1	F	Covered Porch	2 x 4 x 62	0	Mullion	Black	Clear	+114.3 -114.3	5	ESW	NOA: 24-0312.06	
1	G	Covered Porch	71 x 59	29	Casement Window	Black	Clear	+75 -75	5	Officina/Korus	NOA: 24-0213.03	
1	G	Covered Porch	71 x 27	13 1/3	Fixed Window	Black	Clear	+80 -80	5	Officina/Korus	NOA: 24-0213.02	
1	G	Covered Porch	2 x 4 x 72	0	Mullion	Black	Clear	+81 -81	5	ESW	NOA: 24-0312.06	

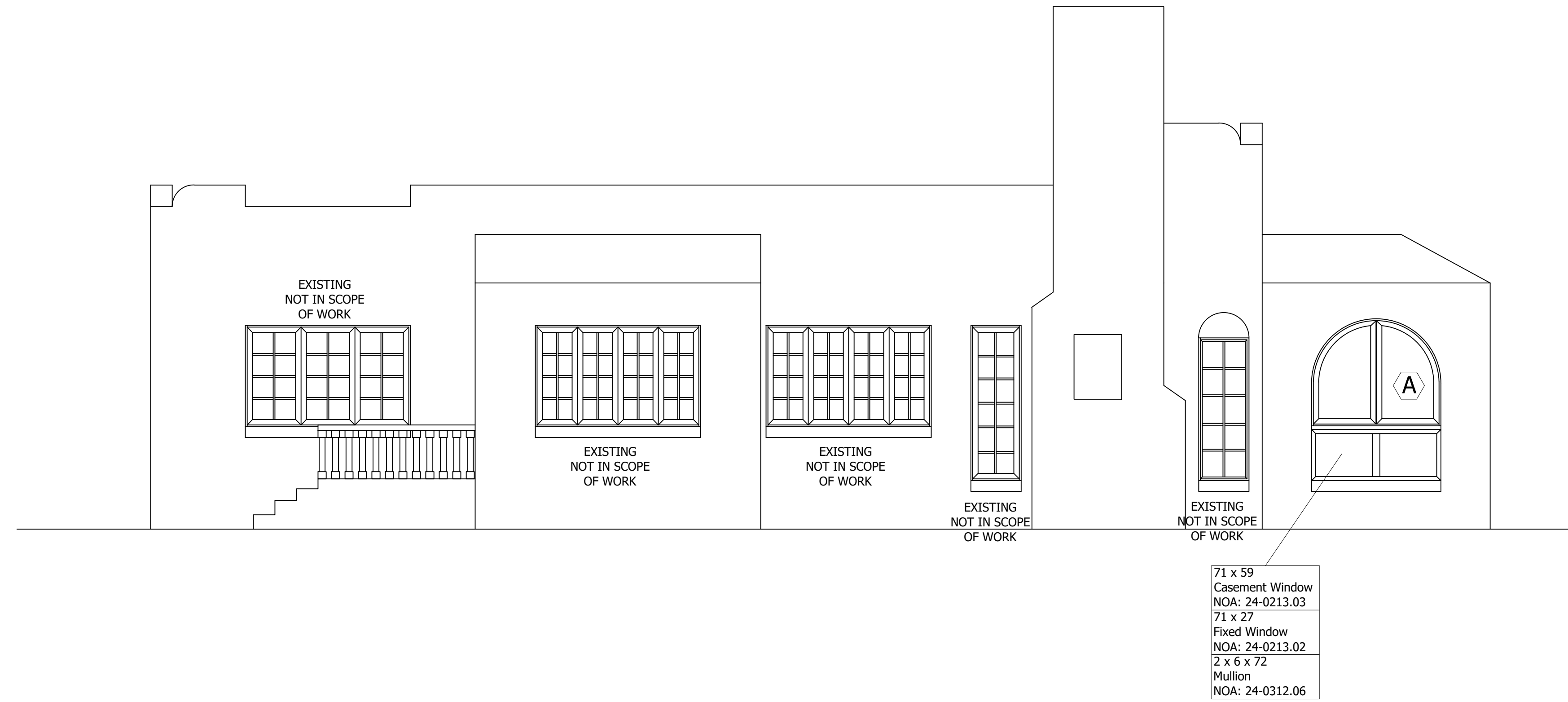
NOTE
- COVERED PORCH IS AN EXISTING ROOM
- CATEGORY III SUNROOM NON-HABITABLE & UNCONDITIONED
- ONLY COVERED PORCHE OPENINGS FACING OUTSIDE ARE PART OF THIS PERMIT



FIRST FLOOR PLAN

PLEASE NOTE:
 ALL UNITS NOT MARKED ARE
 EXISTING TO REMAIN, NOT IN
 SCOPE/CONTRACT, OR BY OTHERS

ClearChoice
 Windows & Doors
 2184 NW 89th Place
 Doral, Florida 33172
 Tel: (305) 259-6899
 Fax: (305) 278-8449
 german@cimpact.com



SIDE (WEST) ELEVATION



SIDE (EAST) ELEVATION

547 Alcazar Residence
547 Alcazar Ave,
Coral Gables, FL 34134

DATE: 03/10/26
 SCALE: 1/4"=1'-0"
 DRAWN BY: MR
 REVISED BY: RA

SHEET NO.

2

2 OF 2