
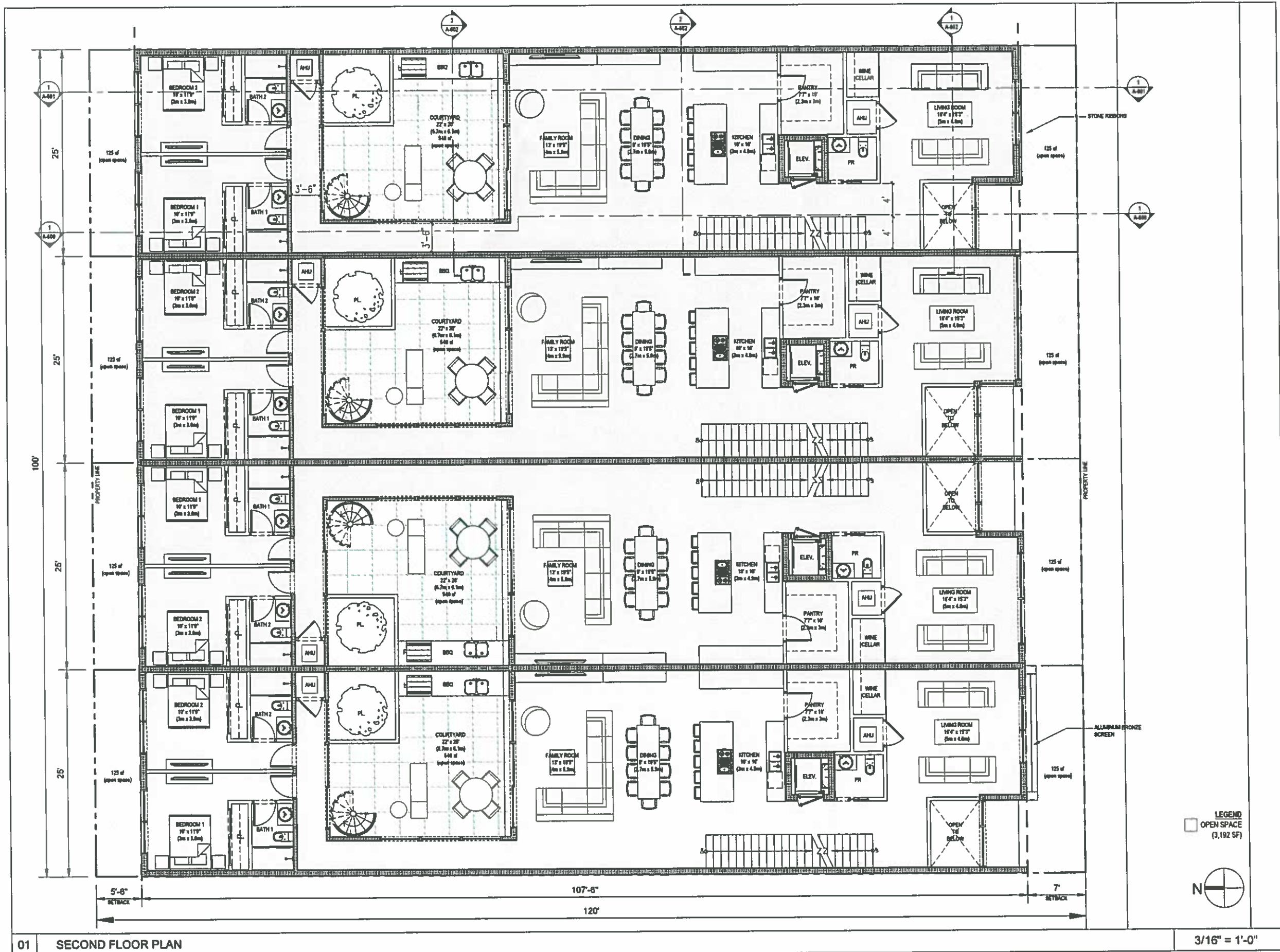
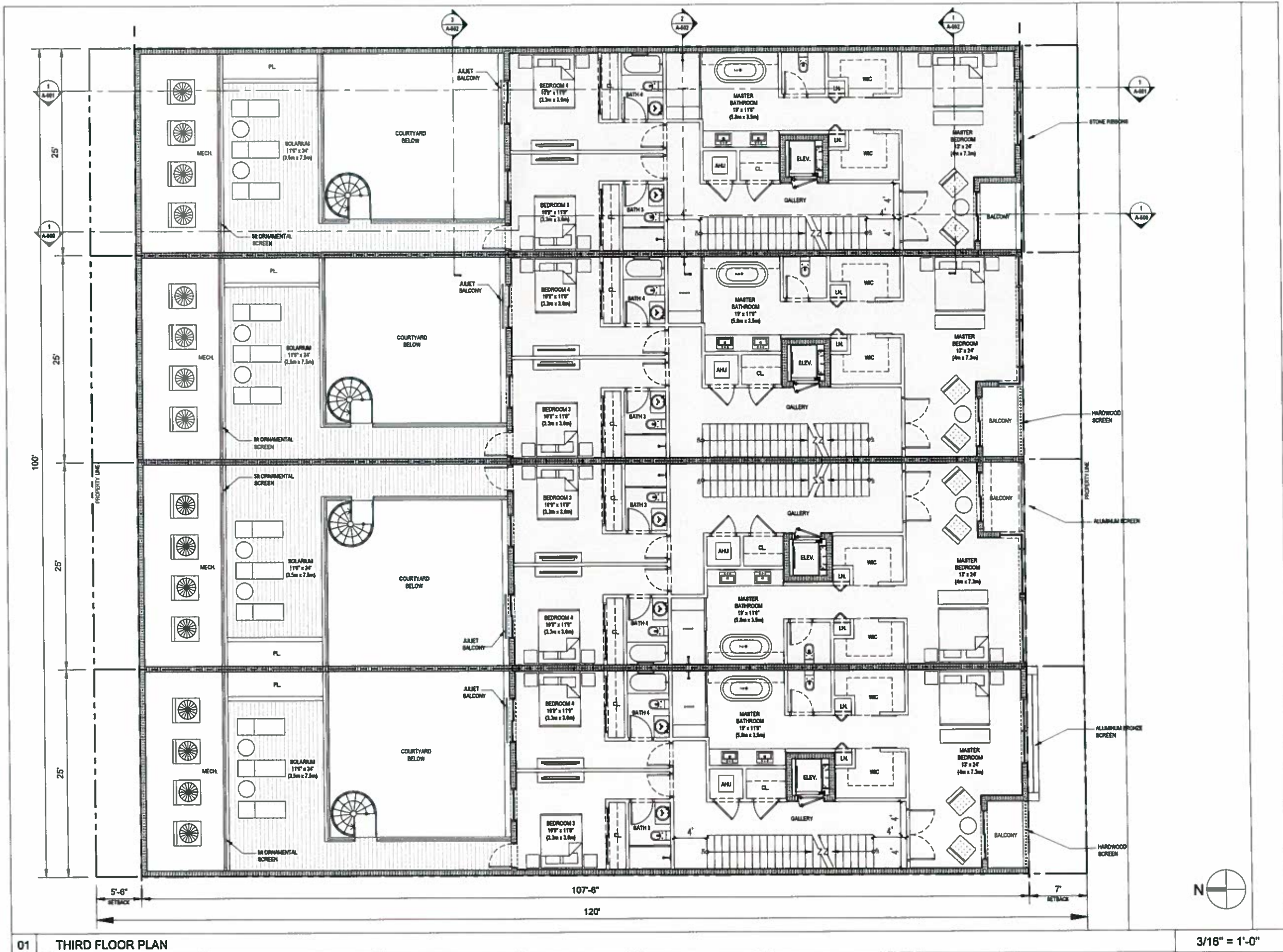


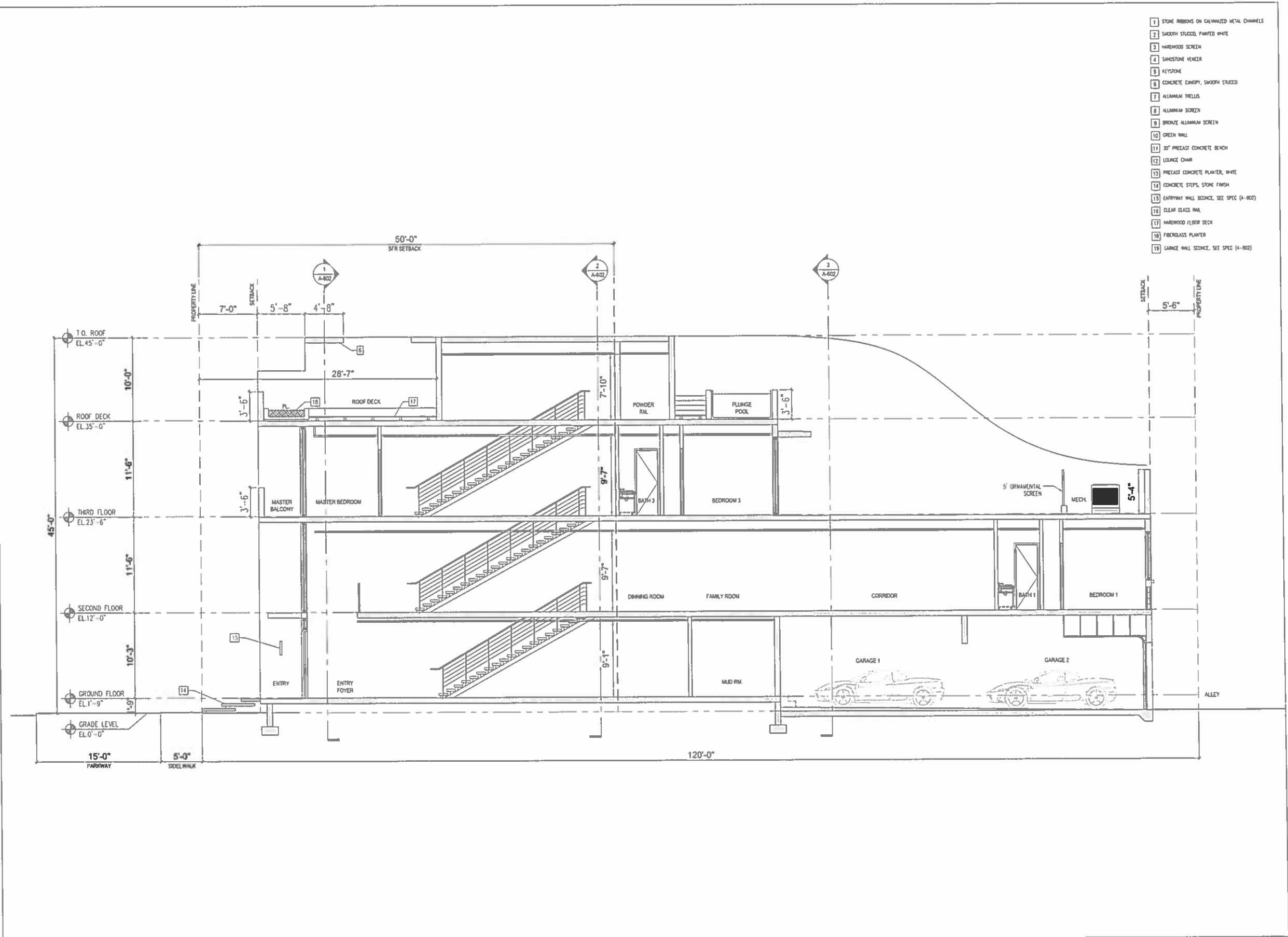
ISSUE DATE: 08.18.15 BOA SUBMITTAL		
No.	DATE	DESCRIPTION
<small>All ideas, designs, arrangements, plans and specifications indicated or represented by the drawing are owned by and are the property of Borges + Associates, P.A., and were created, evolved and developed for use on and in connection with the specified project. No copies, reproductions, reproductions, or electronic manipulation of any portion of these drawings in whole or in part are to be made without the express written permission of Borges + Associates, P.A.</small>		
All copyrights reserved © 2015		
borges architects + associates architecture urban-planning interior-design 1200 Brickell Ave., Suite 1525 Miami, Florida 33131 305.374.9216 phone • 305.374.9217 fax www.borgesarchitects.com		
RENALDO BORGES, ARCHITECT 		
Project Team		
Project Name		
625 ALMERIA TOWNHOUSES 625 Almeria Ave Coral Gables, FL 33134 FOLIO # 03-4117-008-2170		
Project Number 150710		
Drawing Name		
FIRST FLOOR PLAN		
Scale:	Drawing Number	
AS SHOWN	A-200	



ISSUE DATE: 08.18.15 BOA SUBMITTAL		
No.	DATE	DESCRIPTION
<small>All ideas, designs, arrangements, plans and specifications indicated or represented by this drawing are owned by and are the property of Borges + Associates, P.A., and were created, evolved and developed for use on and in connection with the specified project. No copies, transmittals, reproductions or electronic manipulation of any portion of these drawings or whole or in part are to be made without the express written permission of Borges + Associates, P.A.</small>		
<small>All copyrights reserved © 2015</small>		
borges architects + associates <small>architecture urban-planning interior-design</small>		
<small>1200 Brickell Ave., Suite 1825 Miami, Florida 33131 305.374.9218 phone • 305.374.9217 fax www.borgesarchitects.com</small>		
<small>REINALDO BORGES, ARCHITECT</small>		
Project Team		
Project Name		
625 ALMERIA TOWNHOUSES <small>625 Almeria Ave Coral Gables, FL 33134 FOLIO # 03-4117-008-2170</small>		
Project Number 150710		
Drawing Name		
SECOND FLOOR PLAN		
Scale:	Drawing Number	
AS SHOWN	A-201	



ISSUE DATE: 08.18.15 BOA SUBMITTAL		
No.	DATE	DESCRIPTION
<small>All ideas, designs, arrangements, plans and specifications indicated or represented by this drawing are owned by and are the property of Borges + Associates, P.A., and were created, evolved and developed for use on and in connection with the specified project. No copies, reproductions, or electronic manipulation of any portion of these drawings in whole or in part are to be made without the express written permission of Borges + Associates, P.A.</small>		
<small>All copyrights reserved © 2015</small>		
borges architects + associates <small>architecture urban-planning interior-design</small>		
<small>1200 Brickell Ave., Suite 1525 -Miami, Florida 33131 305.374.9218 phone • 305.374.9217 fax www.borgesarchitects.com</small>		
<small>RENALDO BORGES, ARCHITECT</small>		
Project Team		
Project Name		
625 ALMERIA TOWNHOUSES <small>625 Almeria Ave Coral Gables, FL 33134 FOLIO # 03-4117-008-2170</small>		
Project Number 150710		
Drawing Name		
THIRD FLOOR PLAN		
Scale:	Drawing Number	
AS SHOWN	A-202	



- 1 STONE RIBBONS ON GALVANIZED METAL CHANNELS
- 2 SMOOTH STUCCO, PAINTED WHITE
- 3 HARDWOOD SCREEN
- 4 SANDSTONE VENEER
- 5 KEYSTONE
- 6 CONCRETE CANOPY, SMOOTH STUCCO
- 7 ALUMINUM TRELLIS
- 8 ALUMINUM SCREEN
- 9 BRONZE ALUMINUM SCREEN
- 10 GREEN WALL
- 11 30" PRECAST CONCRETE BENCH
- 12 LEANER CHAIR
- 13 PRECAST CONCRETE PLANTER, WHITE
- 14 CONCRETE STEPS, STONE FINISH
- 15 ENTRYWAY WALL SCIENCE, SEE SPEC (A-802)
- 16 CLEAR GLASS RAIL
- 17 HARDWOOD FLOOR DECK
- 18 FIBERGLASS PLANTER
- 19 GARAGE WALL SCIENCE, SEE SPEC (A-802)

ISSUE DATE: 08.18.15 BOA SUBMITTAL

No.	DATE	DESCRIPTION

All ideas, designs, arrangements, plans and specifications indicated or represented by this drawing are owned by and are the property of Borges + Associates, P.A., and were created, evolved and developed for use and in connection with the specified project. No copies, reproductions, reproductions, or alterations of any portion of these drawings in whole or in part are to be made without the express written permission of Borges + Associates, P.A.

All copyright reserved © 2015

borges architects + associates

architecture urban-planning interior-design

1200 Brickell Ave., Suite 1525 Miami, Florida 33131
305.374.9218 phone • 305.374.9217 fax
www.borgesarchitects.com

RENALDO BORGES, ARCHITECT

AA26000765
AR0016290

Project Team

Project Name

625 ALMERIA
TOWNHOUSES

625 Almeria Ave
Coral Gables, FL 33134
FOLIO # 03-4117-008-2170

Project Number 150710

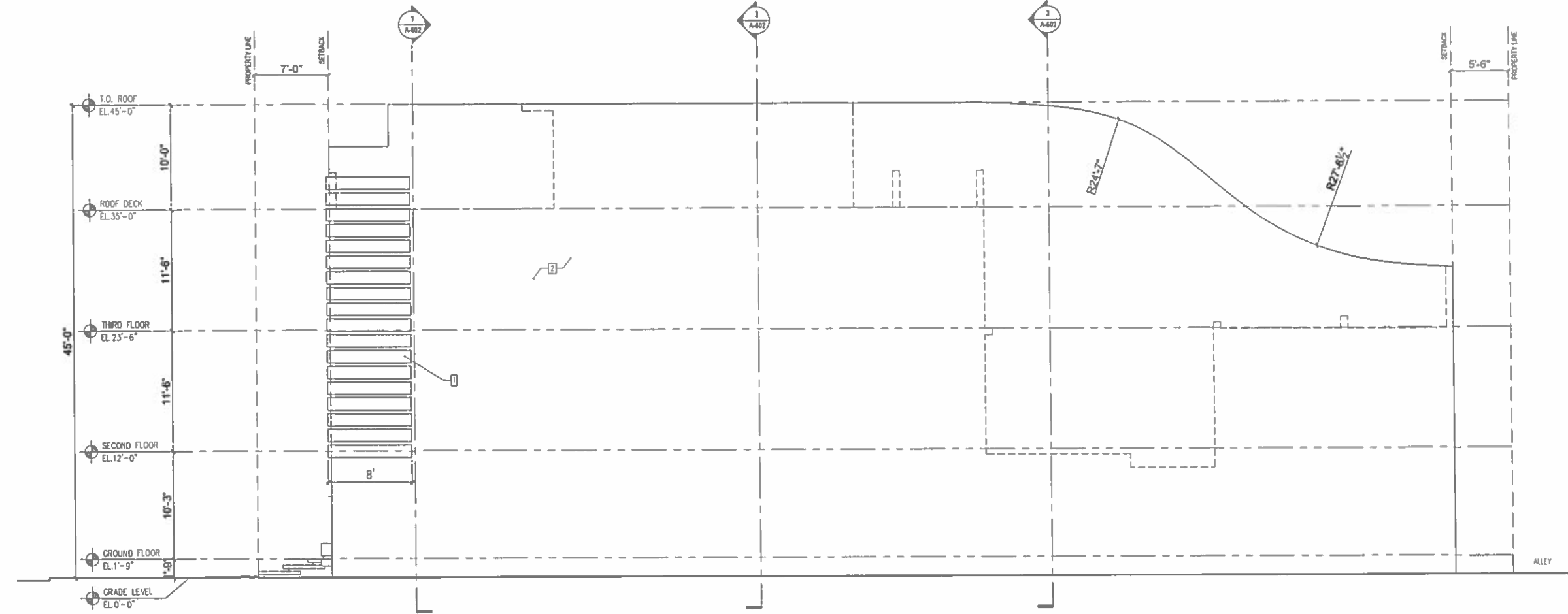
Drawing Name

SECTIONS

Scale:	Drawing Number
AS SHOWN	A-600

01 LONGITUDINAL SECTION 3/16" = 1'-0"

- 1 STONE RIBBONS ON GALVANIZED METAL CHANNELS
- 2 SMOOTH STUCCO, PAINTED WHITE
- 3 HARDWOOD SCREEN
- 4 SANDSTONE VENEER
- 5 KEYSTONE
- 6 CONCRETE CANOPY, SMOOTH STUCCO
- 7 ALUMINUM FRETTS
- 8 ALUMINUM SCREEN
- 9 BRONZE ALUMINUM SCREEN
- 10 GREEN WALL
- 11 30" PRECAST CONCRETE BENCH
- 12 LOUNGE CHAIR
- 13 PRECAST CONCRETE PLANTER, WHITE
- 14 CONCRETE STEPS, STONE FINISH
- 15 ENTRYWAY WALL SOUNICE, SEE SPEC (A-802)
- 16 CLEAR GLASS BAL.
- 17 HARDWOOD FLOOR DECK
- 18 FIBERGLASS PLANTER
- 19 GARAGE WALL SOUNICE, SEE SPEC (A-802)



ISSUE DATE: 08.18.15 BOA SUBMITTAL

No.	DATE	DESCRIPTION

All ideas, designs, arrangements, plans and specifications indicated or represented by this drawing are owned by and are the property of Borges + Associates, P.A., and used in connection with the specified project. No copies, transmissions, reproductions, or electronic manipulation of any portion of these drawings in whole or in part are to be made without the express written permission of Borges + Associates, P.A.

All copyrights reserved © 2015

borges/architects
+ associates

architecture urban-planning interior-design

1200 Brickell Ave., Suite 1525 Miami, Florida 33131
305.374.9216 phone • 305.374.9217 fax
www.borgesarchitects.com

REINALDO BORGES, ARCHITECT

AA26000765
AR0018290

Project Team

Project Name

**625 ALMERIA
TOWNHOUSES**

625 Almeria Ave
Coral Gables, FL 33134
FOLIO # 03-4117-008-2170

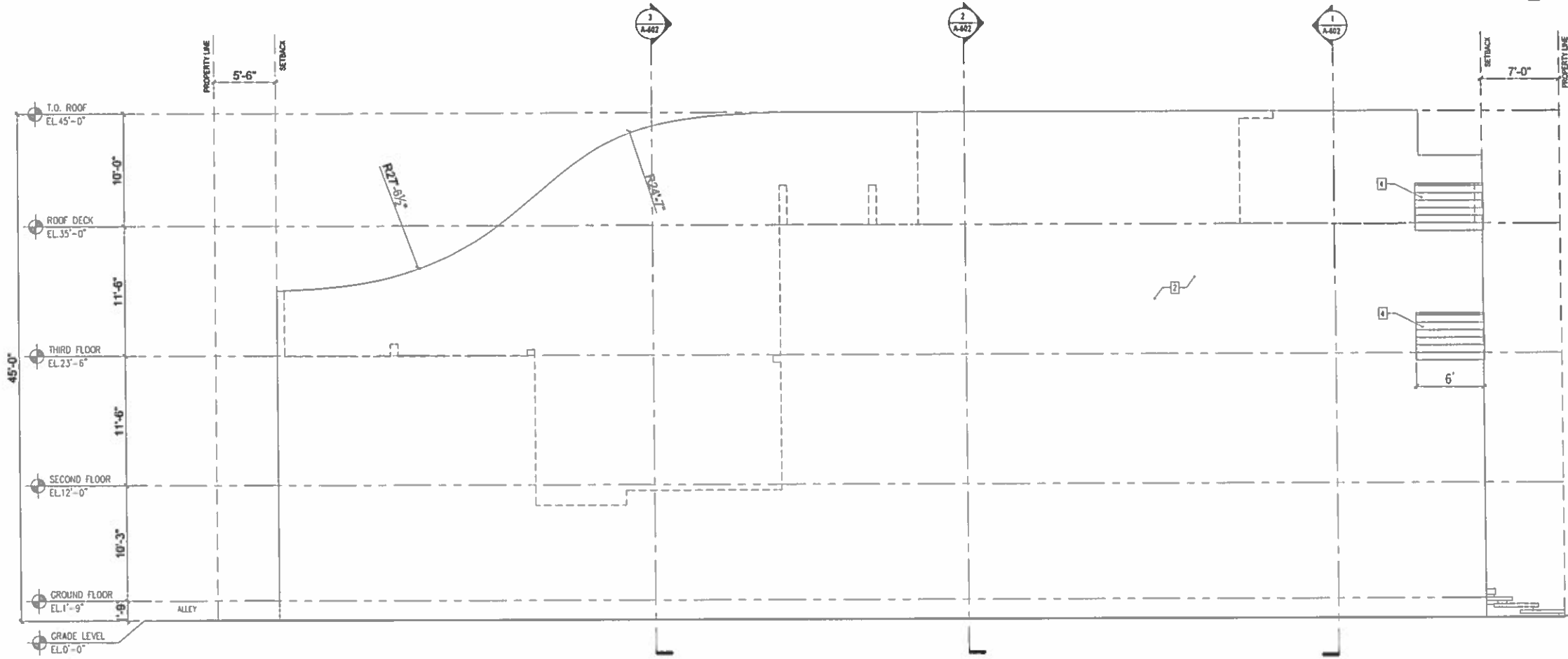
Project Number: 150710

Drawing Name

EXTERIOR ELEVATIONS

Scale:	Drawing Number
AS SHOWN	A-502

- 1 STONE FINISHES ON GALVANIZED METAL CHANNELS
- 2 SMOOTH STUCCO, PAINTED WHITE
- 3 HARDWOOD SCREEN
- 4 SANDSTONE VENEER
- 5 KEYSTONE
- 6 CONCRETE CHIMNEY, SMOOTH STUCCO
- 7 ALUMINUM TRILLOS
- 8 ALUMINUM SCREEN
- 9 BRONZE ALUMINUM SCREEN
- 10 GREEN WALL
- 11 30" PRECAST CONCRETE BENCH
- 12 LOUNGE CHAIR
- 13 PRECAST CONCRETE PLANTER, WHITE
- 14 CONCRETE STEPS, STONE FINISH
- 15 ENTRYWAY WALL SCREEN, SEE SPEC (A-802)
- 16 CLEAR GLASS RAIL
- 17 HARDWOOD FLOOR DECK
- 18 FIBERGLASS PLANTER
- 19 GARAGE WALL SCREEN, SEE SPEC (A-802)



ISSUE DATE: 08.18.15 BOA SUBMITTAL

No.	DATE	DESCRIPTION

All ideas, designs, arrangements, plans and specifications indicated or represented by this drawing are owned by and are the property of Borges + Associates, P.A., and were created, evolved and developed for use on and in connection with the specified project. No copies, transmission, reproduction, or electronic manipulation of any part of these drawings in whole or in part are to be made without the express written permission of Borges + Associates, P.A.

All copyrights reserved © 2015

borges architects + associates
 architecture urban-planning interior-design
 1200 Brickell Ave., Suite 1525 Miami, Florida 33131
 305.374.9216 phone • 305.374.9217 fax
 www.borgesarchitects.com

REINALDO BORGES, ARCHITECT

Project Team

Project Name
625 ALMERIA TOWNHOUSES
 625 Almeria Ave
 Coral Gables, FL 33134
 FOLIO # 03-4117-008-2170

Project Number 150710

Drawing Name
EXTERIOR ELEVATIONS

Scale: AS SHOWN
 Drawing Number
A-503