

March 30, 2018

VIA ELECTRONIC AND HAND DELIVERY

Ms. Catherine Cathers, Arts & Culture Specialist
Historical Resources and Cultural Arts Department
City of Coral Gables
2327 Salzedo Street
Coral Gables, Florida 33134

**Re: Submittal for Arts Advisory Panel for Art in Public Places
Paseo de la Riviera / 1350 S. Dixie Highway, Coral Gables, Florida**

Dear Ms. Cathers:

On behalf of NP International, we present updated documentation for the Art in Public Places (“AiPP”) submittal for consideration of the Paseo de la Riviera project (the “Project”) located at 1350 S. Dixie Highway, Coral Gables. To satisfy the AiPP requirement, the Project proposes the installation of a sculpture by Mr. Jaume Plensa identified as *Storm* (the “Artwork”).

The Artwork was previously reviewed at the February 28, 2018 Arts Advisory Panel meeting, where a unanimous decision to positively recommend Mr. Plensa’s art installation in the Project’s plaza was approved subject to certain conditions. We are enclosing additional documentation to address the comments that were provided by the Panel for consideration by the April 3, 2018 meeting of the Arts Advisory Panel. Specifically, the artistic renderings have been revised to reflect the Artwork on a raised tiled platform, surrounded by river rocks. We believe that this additional contribution to the Artwork will further enhance the display while discouraging any climbing or other disturbances to the sculpture.

Additionally, as to the specific questions discussed at the February Arts Advisory Panel meeting, our responses are as follows:

- *What is the gauge of stainless steel for Mr. Plensa’s sculpture?*
 - Mr. Plensa’s *Storm* is 3/16 grade stainless steel and is approximately 0.160”.
- *How will the sculpture be maintained for cleanliness?*
 - The maintenance will be water and soft towel or sponge. Ensuring the cleanliness of the sculpture will become part of the daily maintenance of

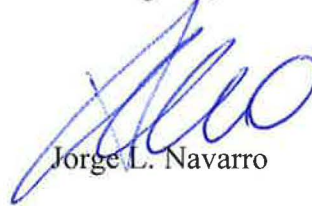
MIA 186435274v2

the property to ensure spot cleaning as needed, with incorporated quarterly professional cleanings. The maintenance will be undertaken by the staff that will be on site and responsible for maintaining of the paseo and overall premises.

- *How will you discourage touching, climbing, and generally protect the piece?*
 - The updated enclosed renderings provide a visual representation to discourage disturbing the Artwork. The river rocks and raised tiled platform will create a physical barrier to create a buffer between the Artwork and the public. We believe these design features will help deter touching and climbing. Additionally, a sign reading “Please Do Not Touch” will be displayed on a small metal plaque that will be installed near the Artwork.

We look forward to continuing to work with you and your staff to add Mr. Plensa’s visionary *Storm* at the Project in the City Beautiful. Should you require any additional information, please do not hesitate to contact us directly.

Best regards,



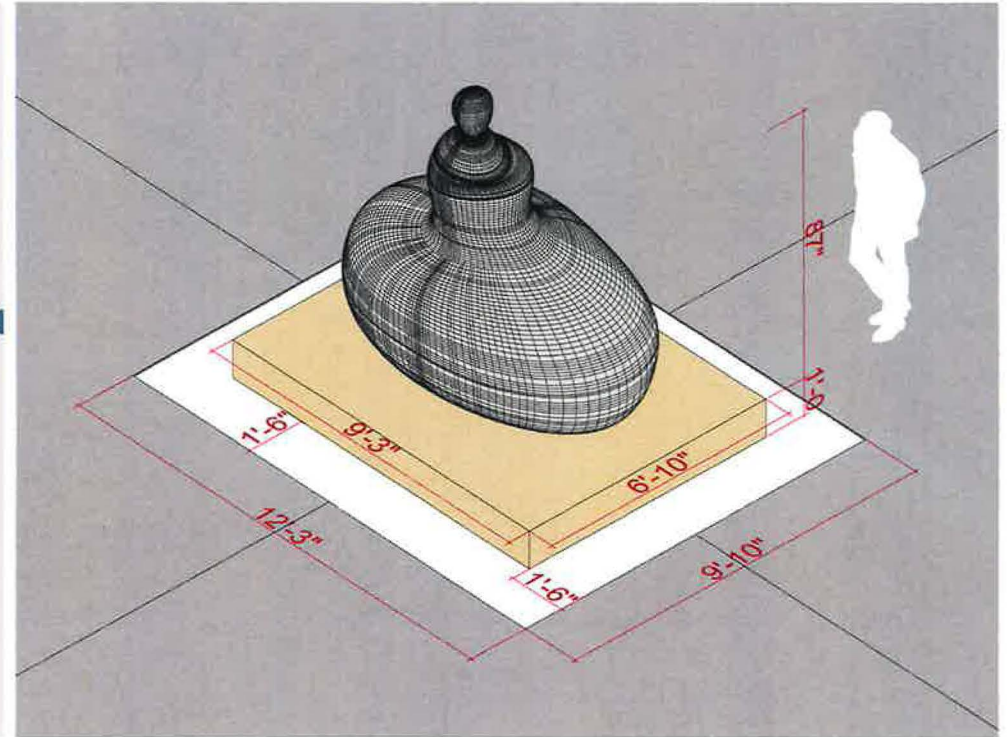
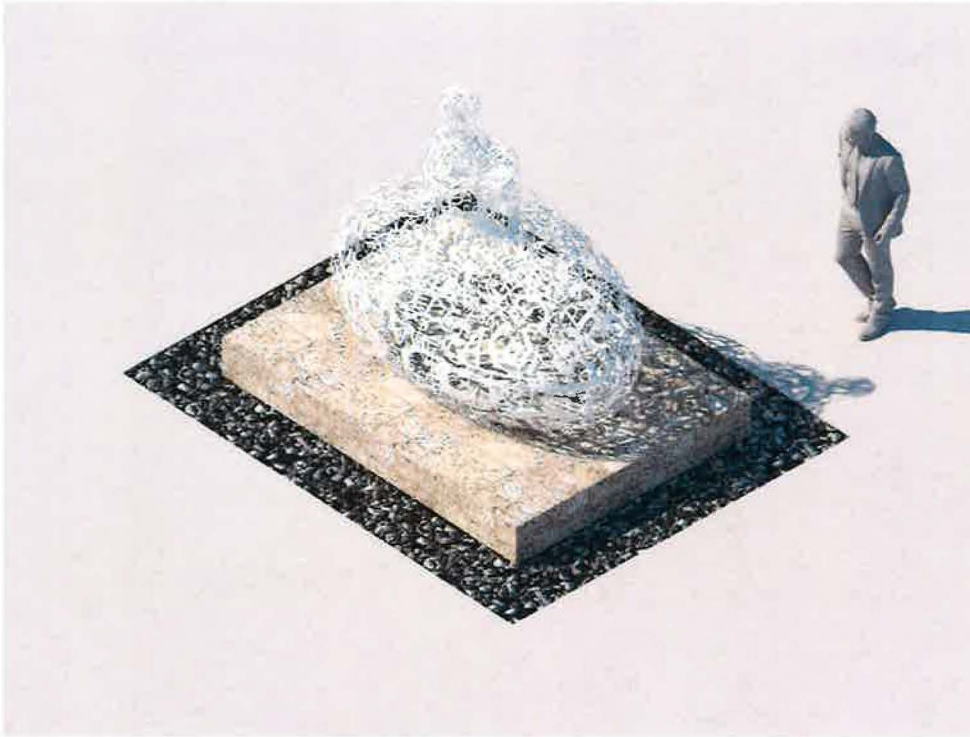
Jorge L. Navarro

Enclosures

RENDERING



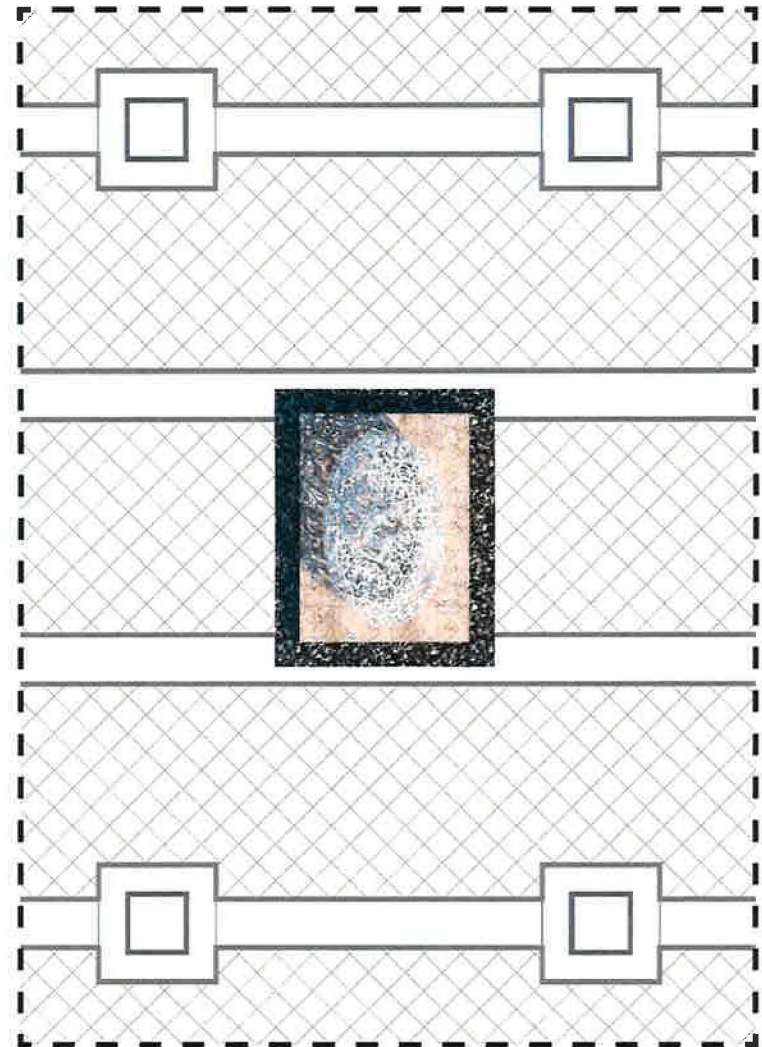
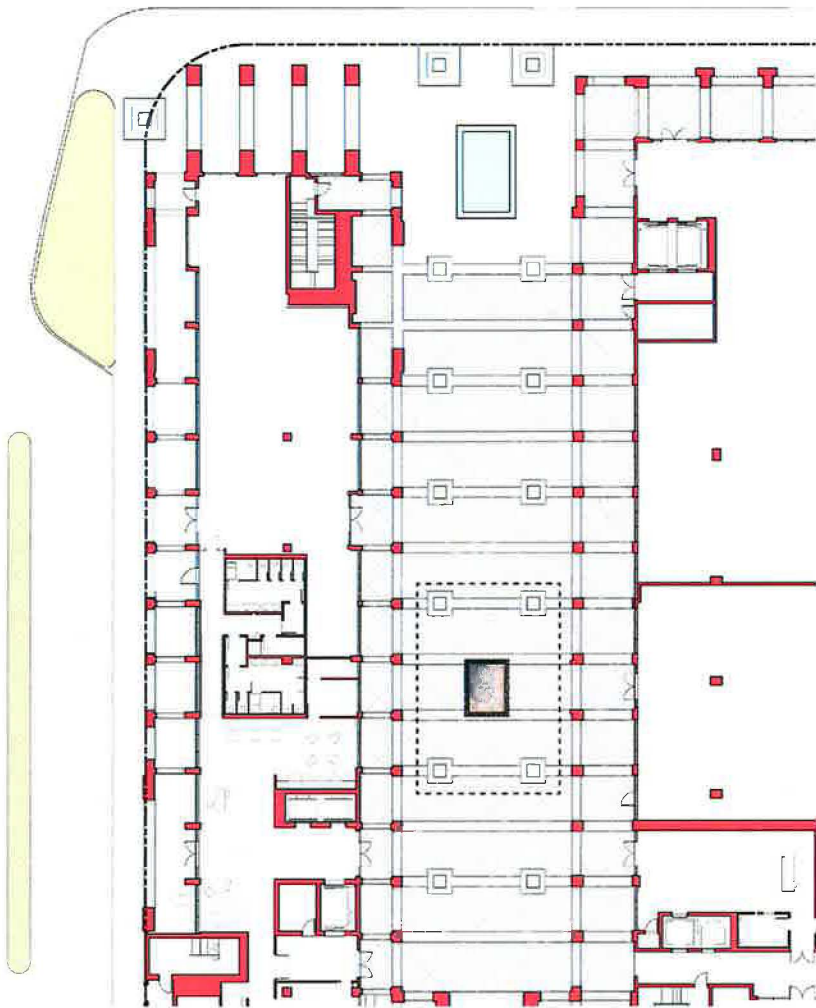
AXONOMETRIC RENDERING & DIMENSION



3'-6" REACH FROM EDGE OF RIVER STONE
TO SCULPTURE ON ALL SIDES

PLAN OPTION.1(RECOMMENDED LOCATION)

 US1 DIXIE HIGHWAY



SECTION



Paseo de la Riviera - Plensa

"Storm" Budget Estimate - Allowable Costs -

Total Project

Artwork Contract Value	\$	483,000
General Conditions - Art Installation	\$	30,000
Sales Tax	\$	28,980
Artwork Platform/Protective Support	\$	25,000
Sub-Total	\$	566,980
3% Artist's Contingency	\$	17,009
1.25% SDI (Insurance)	\$	7,087
Sub-Total	\$	591,077
10% Developer Design & Installation Expenses	\$	59,108
Total Cost	\$	650,184

February 23, 2018

VIA ELECTRONIC AND HAND DELIVERY

Ms. Catherine Cathers, Arts & Culture Specialist
Historical Resources and Cultural Arts Department
City of Coral Gables
2327 Salzedo Street
Coral Gables, Florida 33134

**Re: Submittal for Arts Advisory Panel for Art in Public Places
Paseo de la Riviera**

Dear Ms. Cathers:

We represent the developer of the Paseo de la Riviera project (the "Project") in connection with certain land use and development approval matters. As required by the City of Coral Gables (the "City") Art in Public Places program ("AiPP"), we submit to you the enclosed documentation for your review at the January 24, 2018 Arts Advisory Panel meeting in connection with the Project.

The Project, which is located along US-1 at 1350 S. Dixie Highway (previously occupied by the Holiday Inn), is a transit-oriented mixed-use development. It will be among a handful of new developments raising the bar for what urban-living means in the City. Residents and neighbors alike will be pleased by the high standard of living that will embody the Project. The architecture will incorporate a Mediterranean design, well-manicured public spaces and integration into neighboring parks, public transportation and The Underline. As such, exceptional care was used in selecting the artist to satisfy the City's AiPP requirement.

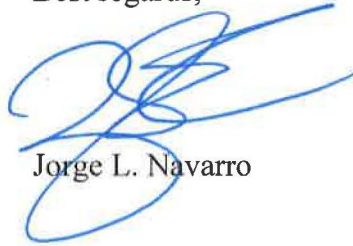
As reflected in the enclosed materials, Mr. Jaime Plensa has been selected for his unique pieces to punctuate the Project's plaza. Mr. Plensa's *Storm* will be the focal point of the Project, combining beauty and thoughtfulness in the busy plaza. As further detailed in the enclosed submittal, his work centers on making connections to unify individuals on a spiritual level using history, literature and biology as inspiration. Originally from Barcelona, Spain, Mr. Plensa's work is exhibited in various public projects and museums throughout the world. It will be an honor to incorporate Mr. Plensa's exceptional work into the Project.

MIA 186289543v1

February 23, 2018
Page 2

We look forward to working with you and your staff to add Mr. Plensa's visionary *Storm* to the Project in the City Beautiful. Should you require any additional information, please do not hesitate to contact us directly.

Best regards,



for:

Jorge L. Navarro

Enclosure

PASEO DE LA RIVIERA

CORAL GABLES

Proposed Artwork by Jaume Plensa

January 2018

Artwork Specifications

Artist: Jaume Plensa

Title: *Storm*

Year: 2013

Dimensions: 87 x 58 x 108 1/4 in (221 x 147 x 275 cm)

Weight: Approx. 900 pounds

Materials: Stainless steel

Description: Storm would be located at Paseo, which is punctuated by a large, open-air plaza. The artwork will be located at the entrance of the plaza along US-1 frontage to serve as a focal point for the project and enhance the sense of place within the plaza. Jaume Plensa, “an acclaimed creator of public art,” creates sculptures and installations that unify individuals through connections of spirituality, the body, and collective memory. Literature, psychology, biology, language, and history have been key guiding elements throughout his career. Using a wide range of materials including steel, cast iron, resin, paraffin wax, glass, light, water, and sound, Plensa lends physical weight and volume to components of the human condition and the ephemeral.

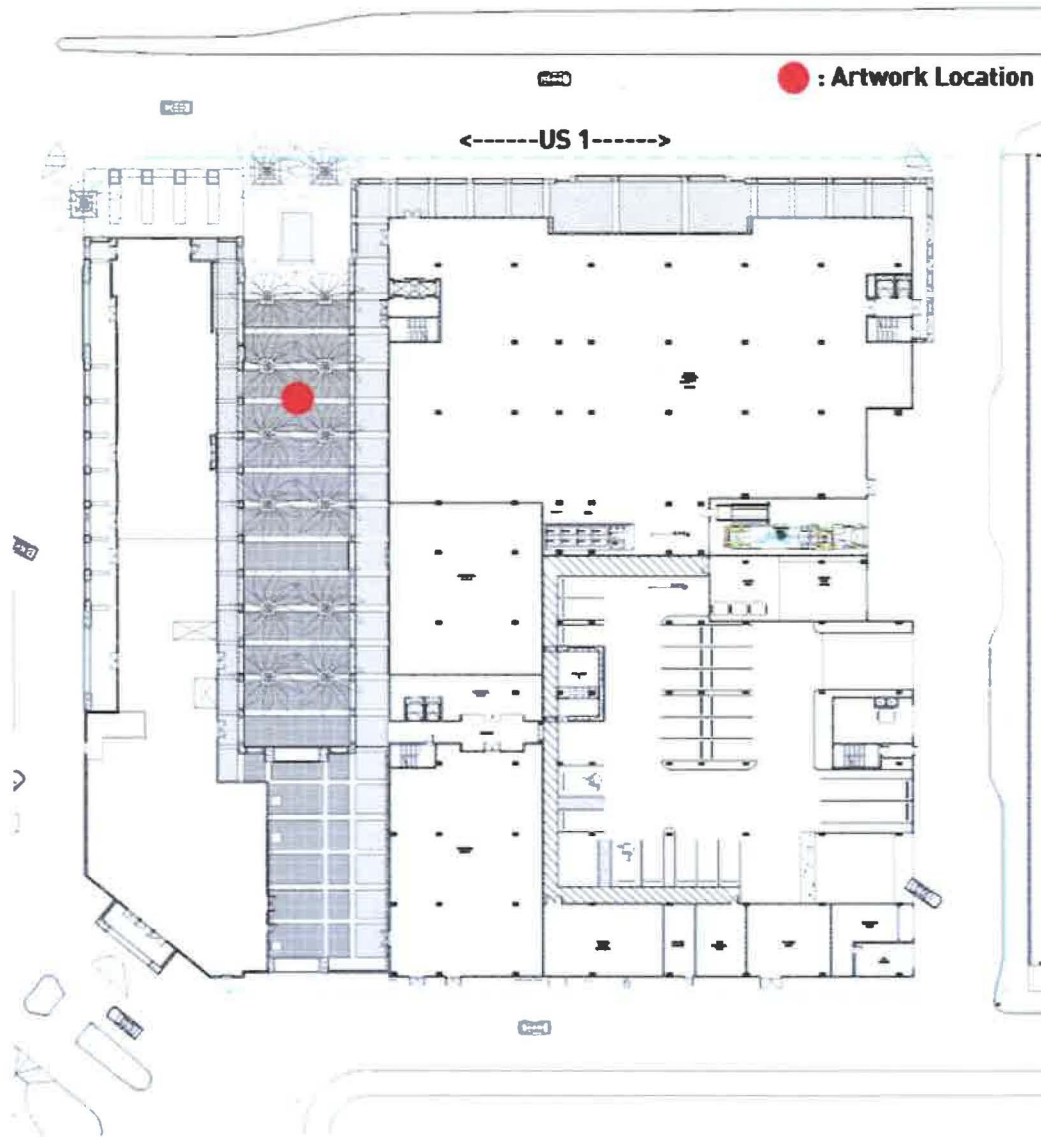
Artwork Specifications

Installation Method: The artwork will be constructed of stainless steel and can either be placed upon concrete or landscaped surface, and secured by steel U-shaped mounting brackets. Upon approval of proposal and prior to installation, construction instructions and specifications will be provided to the City and ownership of the property.

Origin: Paris, France

Maintenance: Spot clean by hand using a mild soap and water with a soft cloth once per month. Cleaning solutions or steel wool should not be used.

Location of artwork



Location of Artwork



Proposed Artwork, *Storm*



Proposed Artwork, *Storm*



Proposed Artwork, *Storm*



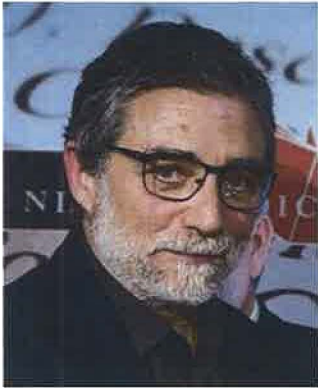
Proposed Artwork, *Storm*



Location of Artwork



About the Artist



Jaume Plensa (b. 1955, Barcelona, Spain) is highly active in projects in public space; his celebrated and sought after works can be seen in Millennium Park, Illinois; Olympic Sculpture Park, Washington; Burj Khalifa, United Arab Emirates; BBC Broadcasting Tower and St. Helens, England; Pearson International Airport, Canada; Daikanyama, Toranomon Hills, and Ogijima Japan; Shanghai IFC Mall, China; Albright Knox Art Gallery, New York; Rice University, Texas; Bastion Saint-Jaume, France; Raoul Wallenberg Square, Sweden; and Pérez Art Museum Miami, Florida, among many other sites worldwide.

The artist has presented solo exhibitions at prestigious institutions around the globe including the Institut Valencia d'Art Moderne, Spain; Nasher Sculpture Center, Dallas, Texas; Musée Picasso, France; Yorkshire Sculpture Park, England; and the Espoo Museum of Modern Art, Finland. Jaume Plensa: Human Landscape recently to the Cheekwood Botanical Garden & Museum of Art, Tennessee; Tampa Museum of Art, Florida; and Toledo Museum of Art, Ohio. Jaume Plensa: Together was presented at the Basilica San Giorgio Maggiore in Italy as a collateral event of the 56th Venice Biennale.

Process Used for Selection of Artist

NP International provided Burnet Fine Art & Advisory material about Coral Gables and the artist selection process. We reviewed the material, including the Coral Gables Art in Public Places website, as well the Non- Municipal Project Guidelines.

Jennifer Phelps flew to Miami on August 7th to meet a representative from NP International who then toured her by car through Coral Gables; residential and commercial areas. She was then taken to the project site; Paseo. At which time she extensively photographed the location. Phelps also observed the traffic flow along the various streets and highways surrounding the project. Phelps was taken to see the various Coral Gables public artworks that were in place at that time. Phelps spent time later in the day walking the area and city to capture the personality of Coral Gables from a pedestrian perspective.

Upon her return to Minnesota, Phelps and an assistant researched each artist on the list of pre-approved artists provided by the City of Coral Gables. The list was narrowed down to Jaume Plensa, an artist with great acclaim. He has public work in Japan, Sweden, Seattle, Brazil, Korea, Montreal, New York, Spain to name a few. As well an artwork at the Perez Museum in Miami. We felt that a Plensa located at Paseo will be an artwork enjoyed by the public.

Information about the suggested artist was submitted (bios, images, details) to NP International for review and discussion. Upon approval of the artist by NP International, Burnet Fine Art & Advisory gathered information about an available artwork.

Burnet Fine Art & Advisory Credentials

Burnet Fine Art & Advisory features original contemporary artwork that is thoughtfully curated to inspire and be enjoyed by all. Functioning also as an art advisory, we emphasize a personalized and client-focused approach to art investment.

Burnet Fine Art & Advisory opened in 2006 as Burnet Gallery and was originally located in Le Meridien Chambers, an award-winning art hotel located in downtown Minneapolis. Considered one of the top boutique art hotels in the world, Le Meridien Chambers featured over 250 pieces of original contemporary art throughout the public areas as well as the hotel's 60 guest rooms. Artists included Damien Hirst, Sam Taylor Wood, Gary Hume, Subdh Gupta, Evan Penny, Gavin Turk, Ashley Bickerton, Ellsworth Kelly, to name a few. The commercial gallery featured artwork by local, national and international artists with over 66 exhibitions, working with over 80 artists. In September 2017, the gallery moved to its current location in Wayzata, MN, 15 minutes west of downtown Minneapolis.



Burnet Fine Art & Advisory has placed artwork in numerous private collections worldwide. As well in public collections including RBC Financial, Minneapolis, MN; Abiitan Mill City, Minneapolis, MN; Peregrine Capital Management, Minneapolis, MN; Weisman Art Museum, Minneapolis, MN; Walker Art Center, Minneapolis, MN; Minnesota History Center, St. Paul, MN; Beth El Synagogue, St. Louis Park, MN; General Mills, Minneapolis, MN; Valspar, Minneapolis, MN; Park Nicollet Women's Center, Methodist Hospital, St. Louis Park, MN; Zimmerman & Reed PLLP, Minneapolis, MN; Bearence Management Group, Mendota Heights, MN, to name a few.

Burnet Fine Art & Advisory Credentials Continued



Ralph Burnet, the owner of Burnet Fine Art & Advisory, is an avid collector of Contemporary Artwork. He has been named numerous times as one of the top 200 Art Collectors in the world by Artnews magazine. Burnet is past chairman and president of The Walker Art Center, Minneapolis, MN and currently an Honorary Trustee. He also has an extensive background in real estate and development.

Jennifer Phelps, the Director of Burnet Fine Art & Advisory, has worked in galleries and for private art dealers in San Francisco and Minneapolis. Over the years, she has also worked on numerous projects at the Walker Art Center in Minneapolis. She served as the Director of the Burnet Gallery, Minneapolis (now Burnet Fine Art & Advisory) for 11 years and concurrently was the Director of the Foshay Museum in Minneapolis for 7 years and the Art Director for Le Meridien Chambers Minneapolis for 9 years. She has been on the Boards of the Weisman Art Museum, Minneapolis, MN; Highpoint Center for Printmaking, Minneapolis, MN; Associates Board, Minneapolis College of Art and Design; and the Co-Chair Collector's Group, Walker Art Center, Minneapolis, MN.

Burnet Fine Art & Advisory: <http://burnetart.com/>

BURNET
FINE ART & ADVISORY

775 Lake Street East, Wayzata, MN 55343
952.473.8333 | info@burnetart.com | www.burnetart.com