

Exhibit A

PROPOSED DONATION

Speedforms in the Garden / by designer Pininfarina

VALUE

Monetary value: pending from donor

City Contribution: de-installation, transportation, and installation in location tbd

MATERIAL

Macael stone from Spain

Machine cut and polished by hand

Initial installation included placement over a bed of unpolished white macael pebbles

DONATION & CULTURAL CONNECTION

Resolution 2011-148, Section 2 excerpt

. . . a donation policy is hereby established, which shall provide a procedure for the review and recommendation by the Cultural Development Board of non-monetary art and cultural donations . . .

Resolution 2011-148, Section 3

That donations of art works, commemorative and/or memorial structures, furniture, furnishings, and other objects of cultural significance that enhance the artistic heritage of the City and possess aesthetic characteristics that contribute positively to the quality of public places, lands, and buildings, as well as items of historical significance and other donations benefitting the City are welcomed by the City.

Staff reviewed the proposal and is of the opinion that the object has cultural significance related to the material, will enhance the artistic heritage of the City, and possesses aesthetic characteristics that contribute positively to the quality of public places.

BACKGROUND

The proposed donation pieces were designed and fabricated for Art Week 2018 and are currently at 700 Brickell Ave., the location of a future development where construction will begin soon.

The forms were inspired by a key moment in design, the conception stage. This element is called a speed form and is what gives birth to a form. The sculptures together represent a growth, starting from the smallest sculpture in a cradled shape, ready to bloom. The next size is higher, appearing strong and secure. The tallest stands assertive and proud. As a whole, they evoke movement and the simple beauty of that which is fashioned by nature.



pininfarina

WE MOVE DREAMS

“ Design is the instrument to
humanize innovation. ”

- Paolo Pininfarina

With the collaboration of



PININFARINA A FAMILY LEGACY



A world leading design house established in 1930 in Turin. Made of skills and know-how, of passion and heroism, of craftsmanship and attention to detail, of aesthetic marks and stylistic features.

A heritage of icons, nobility and men that made the Pininfarina style unmistakable. This is the history of Pininfarina design.

PININFARINA DESIGN VALUES

ELEGANCE

Harmony of proportions and volumes
Fluid surfaces and refinement of details
Materials and production quality



PURITY

Essentiality of shapes
Enhancement of function and ergonomics
Long lasting design expression



INNOVATION

New concepts and forward thinking
Advanced materials and technologies
Creating the future trends





RECOGNITION

Our values of Elegance, Purity, and Innovation have been recognized around the world with some of the most prestigious awards. This international visibility positions us as a key player in the design industry.

Recent awards include:

- The 2018 Good Design Award for Vision, a groundbreaking kitchen designed for Snaidero granted by the Chicago Athenaeum Museum of Architecture and Design.
- The International Architecture Award for the Istanbul New Airport ATC Tower.
- The 2016 iF Design Award for residential tower Cyrela by Pininfarina skyscraper.
- The 2015 American Architecture Award assigned to Vitra, a skyscraper design by Pininfarina for Pasqualotto in Brazil.

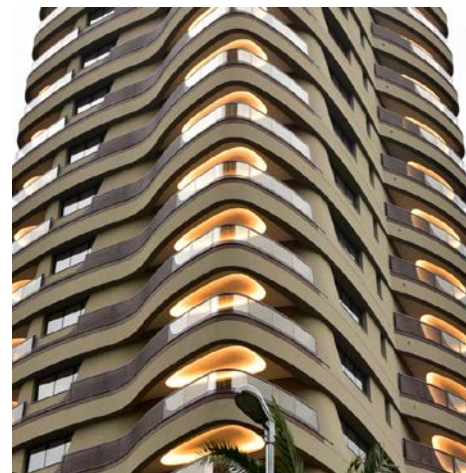


EXPERTISE

We leverage our rich heritage and know-how in car design and manufacturing to provide the best and most creative design solutions across diverse sectors. Our uniqueness lies in our ability to mold the best practices that stem from different industries in cross-fertilization of design disciplines from architecture, to industrial design, to interior design, to transportation.

Our offices are located around the globe with our Headquarters in Turin, Italy and design studios in China, Germany, and the United States.

Our range of services include exterior design, interior design, ergonomics, aerodynamic, engineering, and industrialization support.





EXPLORATION OF THE ARTS

Speed forms and their provocations of emotionality are in the blood of transportation designers, continuously looking to the core sense of their craft. Pininfarina's legacy is tied to these roots, in the artistic sense of proportions, movements, study of volumes and reflections. Marrying aesthetic evocation with functional quality, through pureness of shape and expression of emotion, 'AQUA' was our first exploration into the arts and more specifically into sculpture.

'AQUA' is based and inspired on a speed form and was displayed at Pinta Miami during Art Basel in 2017.

Dimensions:
507mm x 197mm x 152mm



ART BASEL 2018

In 2018, Pininfarina unveiled “Speedforms in the Garden” an outdoor installation at the 2018 Casacor which took place in the heart of Brickell in Miami.

The Pininfarina designed site and landscape spanned different spaces including a sitting area with benches, an entertainment area with a bar, and a sculpture garden titled “Speedform.”

The space invited guests to flow through and enjoy a comfortable and welcoming area in the heart of the city.



PININFARINA SPEEDFORMS IN THE GARDEN

A progression from the natural to the engineered was the theme of the installation. The space invited guests to flow through elements that represented the thematic.

The bar and the benches featured layers of machine cut engineered Dekton® by Cosentino, a compact material that is fully resistant to outdoor weather conditions.

Natural elements are incorporated into the space through the Pininfarina designed landscape as well as through planters featured on some of the benches. These serve to provide shade to those enjoying a moment in the outdoors.

On the opposing side of the garden stood the three dancing sculptures crafted in natural Macael stone from the queries of Spain. Each sculpture is machine cut and polished by hand.





PININFARINA'S SPEEDFORM

The inspiration behind the sculptures come from a key moment in design, the conception stage. This element is called a speed form and it is what gives birth to a form.

In this sense, the three sculptures represent a growth, starting from the "small" sculpture evoking a cradled shape that is ready to bloom.

The "medium" sculpture stands taller, appearing strong and secure.

The tallest of the sculptures, "tall" stands assertive and proud.

The set of sculptures evoke movement and growth. They also evoke the simple beauty of that which is fashioned by nature. Like a natural erosion, the sculptures emulate the precision and power with which nature crafts elements into objects.

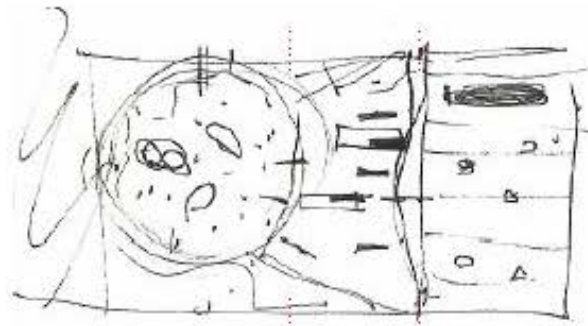
The sculptures are placed over a bed of unpolished white macael pebbles.

SPEEDFORM

CONCEPT

NATURAL MATERIALS

natural stone
vegetation



sculpture

lounge

bar

HYPER TECHNOLOGICAL

performance
dekton





PININFARINA SPEEDFORM

“The Pininfarina design language is strongly driven by functional requirements and the aesthetical solutions are fluid, balanced and dynamic without any need of useless decorations.

Every Pininfarina project has to be innovative, pure, and elegant. The identity of Pininfarina is intriguing as it is somehow a contradiction, similarly artistic and industrial, innovative and traditional, Italian and international.”

Paolo Pininfarina, President Pininfarina

Dimensions:

- “Small” 115 x 115 x 100 CM
- “Medium” 220 x 115 x 128 CM
- “Large” 68 X 79 X 250 CM

SPEEDFORM
SCULPTURES



BOUNDING BOX
2 X 1.2 X 1.1 M
VOLUME
0.839 M³
WEIGHT @ 2800 KG/M³
2349 KG

BOUNDING BOX
2.6 X 0.83 X 0.73 M
VOLUME
0.599 M³
WEIGHT @ 2800 KG/M³
1676 KG

BOUNDING BOX
1.2 X 0.92 X 0.75 M
VOLUME
0.235 M³
WEIGHT @ 2800 KG/M³
658 KG

BEHIND THE SCENES

The sculptures' natural white Macael marble was extracted directly from Cosentino's quarries in Spain.

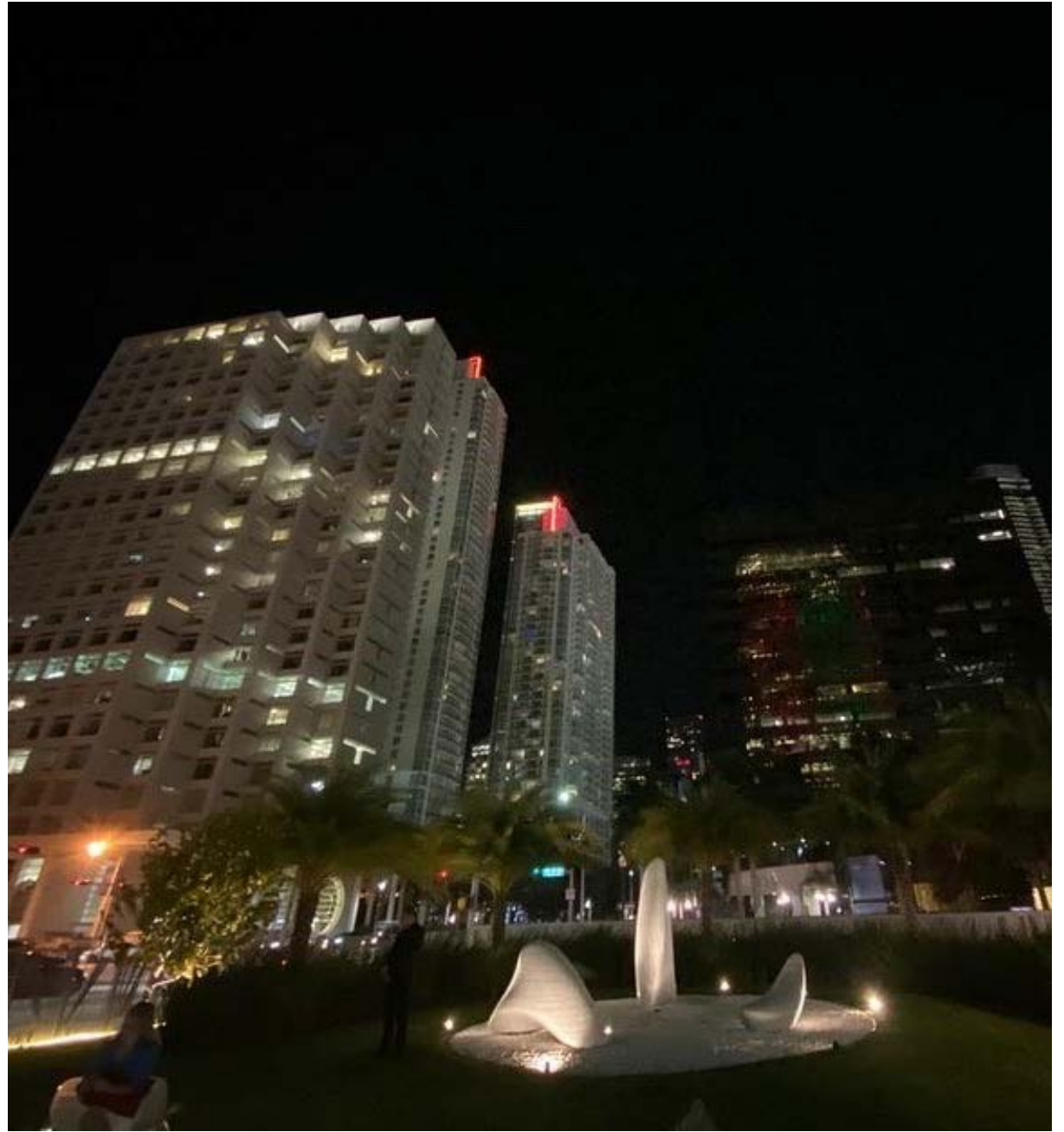
The design of the landscape and the elements including the sculptures is designed by Pininfarina.

The production of the sculptures including the molding, BLA, ABL AMD BLA the was done at Cosentino's factory in Spain.

The sculptures were transported from Spain to Miami and staged on site.

The rest of the elements including the benches and the bar were also transported from Spain and assembled on site.





For additional information please contact:

america@pininfarina.it



pininfarina



Macael Marble

The History of the Marble in the Village of Macael

<https://macaelturismo.com/en/the-marble-of-macael/>

Macael is inexorably linked to the word Marble. The quarries very close to the urban area have been exploited since ancient times, constituting the most important ornamental rock exploitation center in the national territory.

During the Recent Neolithic and Chalcolithic, the populations of the Almanzora Valley took advantage of the white marble stones that dragged the water courses to make small schematic figures called “cruciform idols” or “Almeria idols” that they deposited in collective tombs. In ancient archaeological research they were considered one of the characteristic elements of the “Culture of Almería”.

With the Romans, the Macael quarries began to be exploited on a larger scale, but it is in the Muslim era when there is greater continuity in the extraction.

With the Christian repopulation of Macael, after the expulsion of the Moors, the activity of the marble sector resurfaces. Macael’s “Libro de Apeo” (1573) records that the settlers of that time were taking advantage of the marble from the mountains without restrictions. It is considered that here is the basis of the traditional right of the inhabitants of Macael to freely exploit marble. Through a complex and long process, this right ended up being managed by the city council.

By a complex and long process called “The Lawsuit of the Quarries” (1919-1945) this right ended up being managed by the city council.

The commissioning of the Almanzora railway from 1895 marked the beginning of the takeoff of the Macael marble industry and the possibility of distributing its products to the rest of Spain and Europe.

In 1978, after the approval of the new General Regulations for the Mining Regime, the Macael City Council requested to legalize the status of mining concessions. It is in 1981 when the rights of the mining concessions were granted to the Macael City Council,

agreeing to renew them for periods of 30 years, renovations that have been happening to date. At present, Macael is the largest marble producer in Spain, which in turn holds second place in the world.

Currently, we want to take another step in terms of the recognition and prestige. This doesn't just involve the environment of the quarries, but this culture so deeply rooted and its know-how transmitted from generation to generation, through the recent candidacy of the Macael marble stonework to intangible heritage of humanity of UNESCO.



THE MARBLE QUARRIES

The Macael quarries are located in the central part of the Almería province, on the northern edge of the Sierra de los Filabres, between 1.5 and 6 km. from the town of Macael. They occupy an area of 6,192 hectares, with estimated reserves of 40 million cubic meters.

Come and discover the different places where the different extraction areas are known locally: "Australia", "Barranco Arispe- Cerro Arispe", "Polonia", "Cerro Pelao", "Rambla Orica", "Horcajos- Plantones", "Carretera Alta- Hoyos", "Canteras de Río", "Cañaila- Azules", "Macael Viejo" "Jotatell", "Puntilla- Barranco Puntilla", "Umbría del Marchal", "Culebrón", "Gran Parada", "La Reina", "Polvorín", "Pozo- Umbría del Pozo" o "Umbría Pila".

In the Quarries de Macael we find different types of marbles that we can classify by color according to the trade names registered by the "Macael Brand".



The marble of Macael in the world

Since a long time ago, Macael marble, it is considered a luxurious and majestic material that exceptionally withstands the passage of time, it has been used by ancient civilizations, going through the most important periods in our history to the present day.

Do you want to know that they have in common such important places as the Alhambra of Granada, town hall of Cartagena, the Central Library of Kansas or the Ralli museum of Israel? They all have a common denominator: Macael marble.



History of our work

Did you know that in Macael the stonemason's trade is passed down from father to son, at least from the 10th century to the present day?

In the Prehistory, they were made idols and ornaments mainly carved on marble stones collected from the streams and they were part of the funerary trousseuses.

In Roman times, the quarries were imperial property. From them, *they extracted the whitest and highest quality marble for works such as the Roman Theater of Mérida*, the mosaics in Itálica (Seville), the sculpture of good shepherd of Gador, the head of Vespasiano of Écija or the Mercury of the Museum of Sevilla.

But it doesn't end there...In Arab times, Macael marble was frequently used in his civil and religious works. Floors, capitals, baths and columns of Medina Azahara; The Cordoba's mosque; the Alcazaba of Almería or the Alhambra of Granada, within which it is worth highlighting the 124 columns with their different capitals and the fountain that gives its name to the Patio de los Leones. In addition, marble blocks were exported to Africa for use in multiple constructions.

In the Modern Age, there was a resurgence in the marble extraction sector, this being the preferred material for the construction of cathedrals and other architectural monuments of the time.

Where were they used?

The most representative works are: the Royal Chapel of the Catholic Monarchs, the Palace of Carlos V, the Cathedral of Granada, the Monastery of Escorial in Madrid, the Cathedral of Seville, the Cathedral of Almería, the Castillo del Marqués de los Vélez, currently exhibited in the Metropolitan Museum of New York, the Royal Palace of Madrid or the Monument to the Coloraos of Almería.

Passion, innovation, creativity and design, together with the experience of its professionals, have made Macael and its marble currently have a significant presence both nationally and internationally.

The beauty and uniqueness of this natural stone and the "know-how" of Macael artisans are reflected in recognized works worldwide.

Do you want to know more about it? Come and we'll tell you.

<https://macaelmarmol.com/quienes-somos/historia/>

From Archinect Firms (excerpted):



Pininfarina

Miami, FL



Speedforms in the Garden

Speedforms in the Garden, the Pininfarina installation located in CASACOR at Brickell City Centre in Miami, Florida, spans different spaces united by one underlying theme: the progression from the natural to the engineered. The outdoor exhibit features a sculpture garden, five benches, and a deck area with a bar. (This donation is for the sculptural pieces only.) Speedforms in the Garden sees Pininfarina playing with the opposing forces of nature and technology, blending craftsmanship

with engineering to create objects that are both beautiful and functional for everyday use.

Cosentino, the Spain-based global leader in the production and distribution of innovative surfaces for architecture and design, provided the materials and expertise of natural elements to bring the vision to life.

Three sculptures, representing the natural in form and material, were crafted from Cuellar's natural stone product, Marble Blanco Macael. The sculptures stand against the Miami urban background evoking a sense of freedom, growth, and nature. Much like naturally-occurring erosion, the sculptures emulate the precision and power with which nature crafts elements into objects.

The three pieces composing Speedforms in the Garden present themselves in the form of a sculptural ensemble, and invite the spectator to interact with the spaces, forming an ideal meeting place for the community.

Status: Built

Location: Miami, FL, US





From Cosentino Website (excerpted):

«Speedforms in the Garden» by Cosentino and Pininfarina

Tags: [Design](#), [Outdoor](#) | 4 años ago | Written by: Cosentino



Cosentino announces its collaboration with **Pininfarina**, the internationally renowned design house and emblem of Italian style. Together at **CASACOR Miami** they debut the outdoor project "Speedforms in the Garden".

The installation spans three different spaces including a **sculpture garden, benches, and a deck with a bar.** (This donation is for the sculptural pieces only.)



The spaces illustrate **the progression from the natural to the engineered**. Each of its **nine pieces, prodigious in both scale and impact, highlight the opposing forces of nature and technology** through a blend of world-class craftsmanship and engineering.

Paolo Pininfarina, Chairman of Pininfarina: "Pininfarina has designed a space where each element of the installation is a protagonist in the story of progression from the natural to the engineered. Cosentino materials played an integral role in bringing Pininfarina's vision to life, while also speaking to the brands' shared passion for family heritage and innovation."



Three sculptures, representing the natural in form and material, were crafted from Cosentino's natural stone product **Marble Blanco Macael** -- a homage to Cosentino's beginnings with its very first quarry in Almeria, Spain.

"Speedforms in the Garden" will be located outside **CASACOR Miami** from November 30th to December 16th, 2018. PR Cosentino x Pininfarina_Speedforms in the Garden