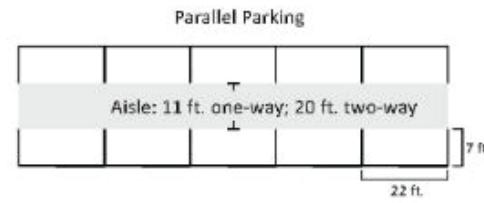


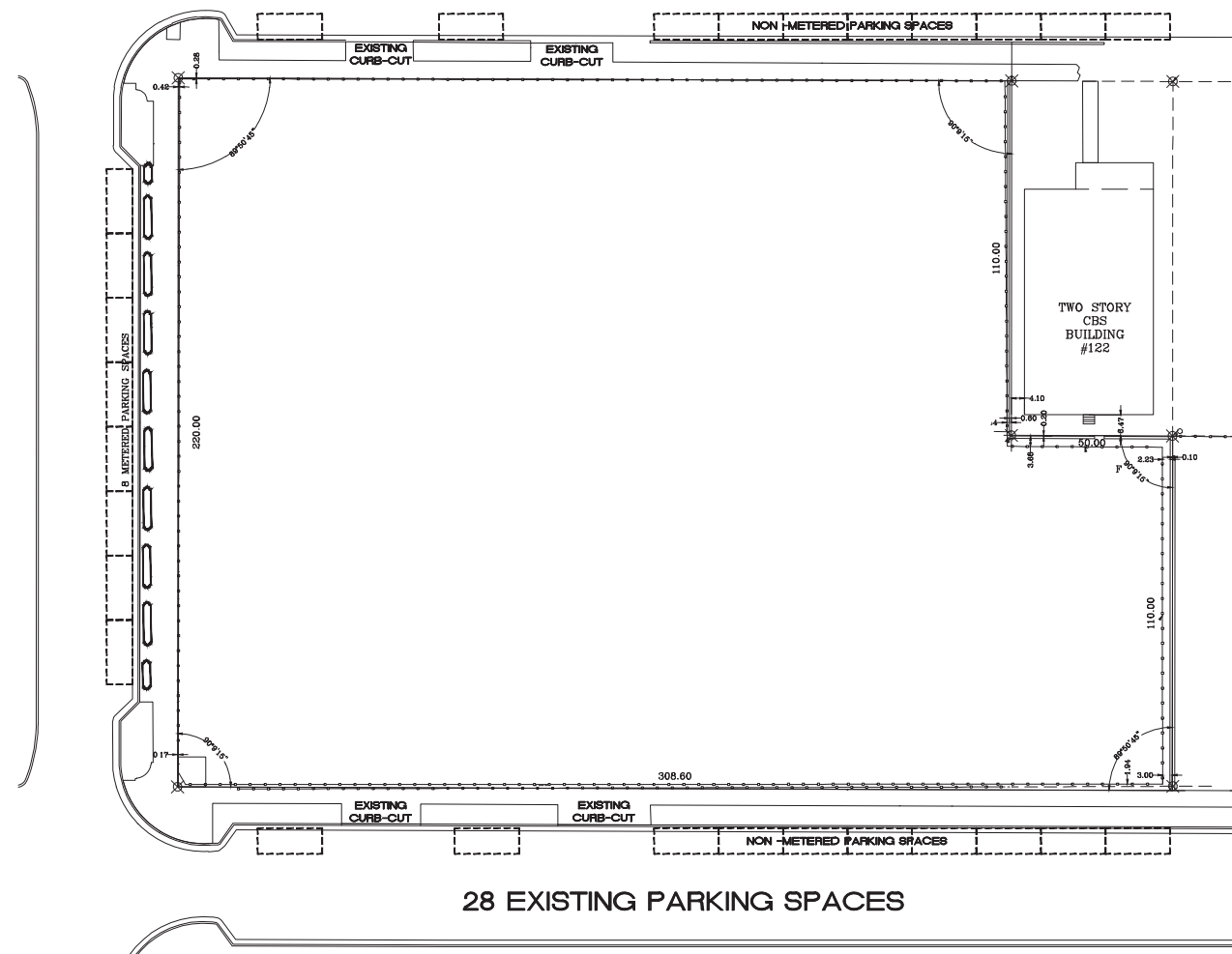
(a)\*



CORAL GABLES ZONING CODE:  
ARTICLE 10. PARKING AND ACCESS,  
SECTION 10-102.3 (a)

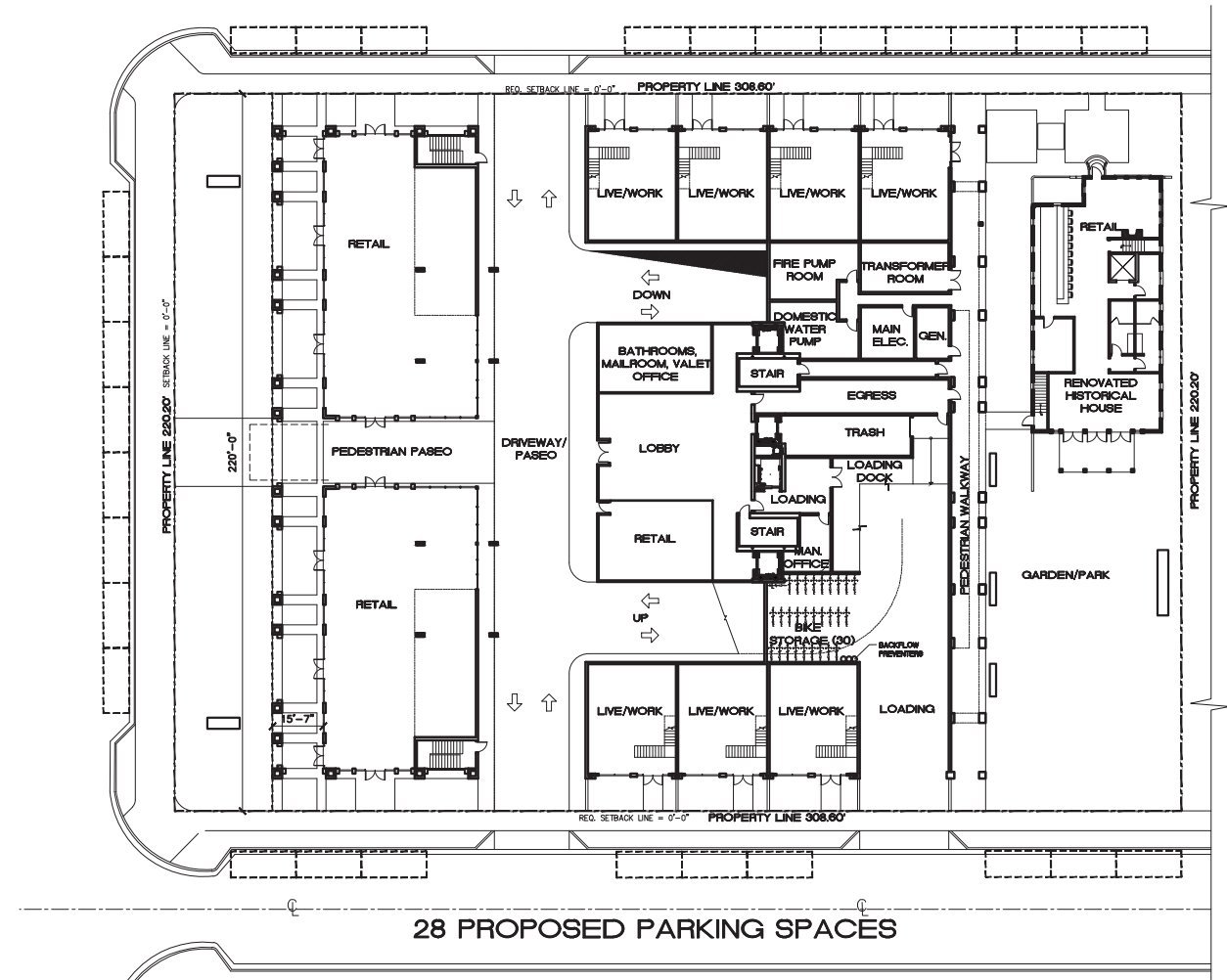


PICTURE OF EXISTING CURB-CUT ON SITE



28 EXISTING PARKING SPACES

EXISTING



28 PROPOSED PARKING SPACES

PROPOSED



PONCE DE LEON BLVD  
112'-0" DEDICATED  
PUBLIC RIGHT-OF-WAY

