

3081 Salzedo St. Third Floor
Coral Gables, FL 33134
Phone: (305) 444-0413

TLC ENGINEERING SOLUTIONS

255 South Orange Ave.
Suite 1600
Orlando, FL 32801
PHONE: (407) 841-9050
PE-17285



DOCTORS HOSPITAL
5000 UNIVERSITY DRIVE
CORAL GABLES, FL. 33146

VALET PARKING SITE USABILITY STUDY

CORPORATE OFFICE
BAPTIST HEALTH SOUTH FL.
6855 RED ROAD
CORAL GABLES, FL. 33146

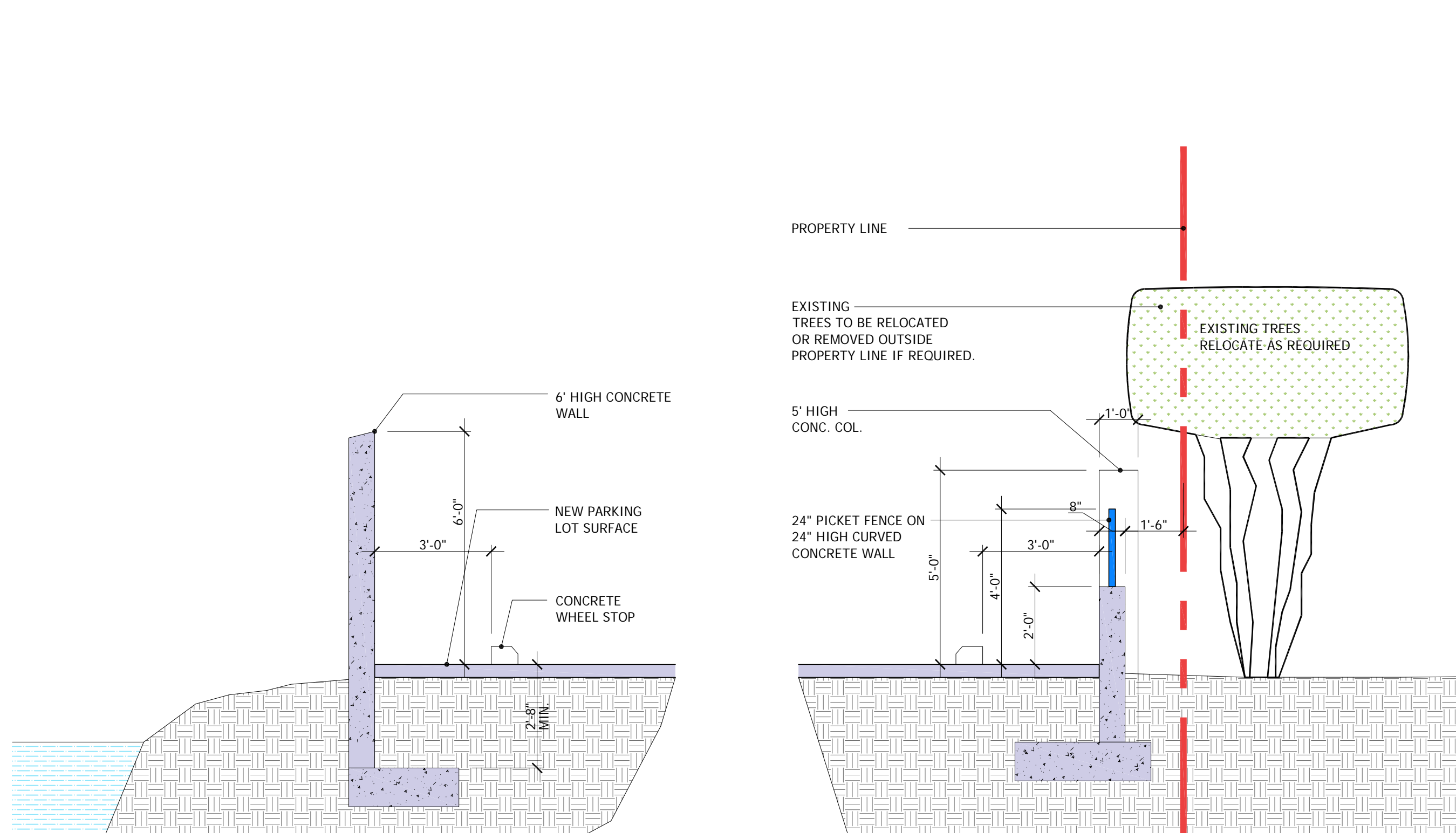
No.	Description	Date
1	BLDG. DEPT MARK UPS	9/24/20
2	FINAL COORDINATION	12/10/20
3	ADJUSTED PICKET FENCE ELEVATION	4/29/21

Proj. No: MG.0015038.01
AHCA SUBMISSION No.
Date: 09/17/2019
Project Manager: LP

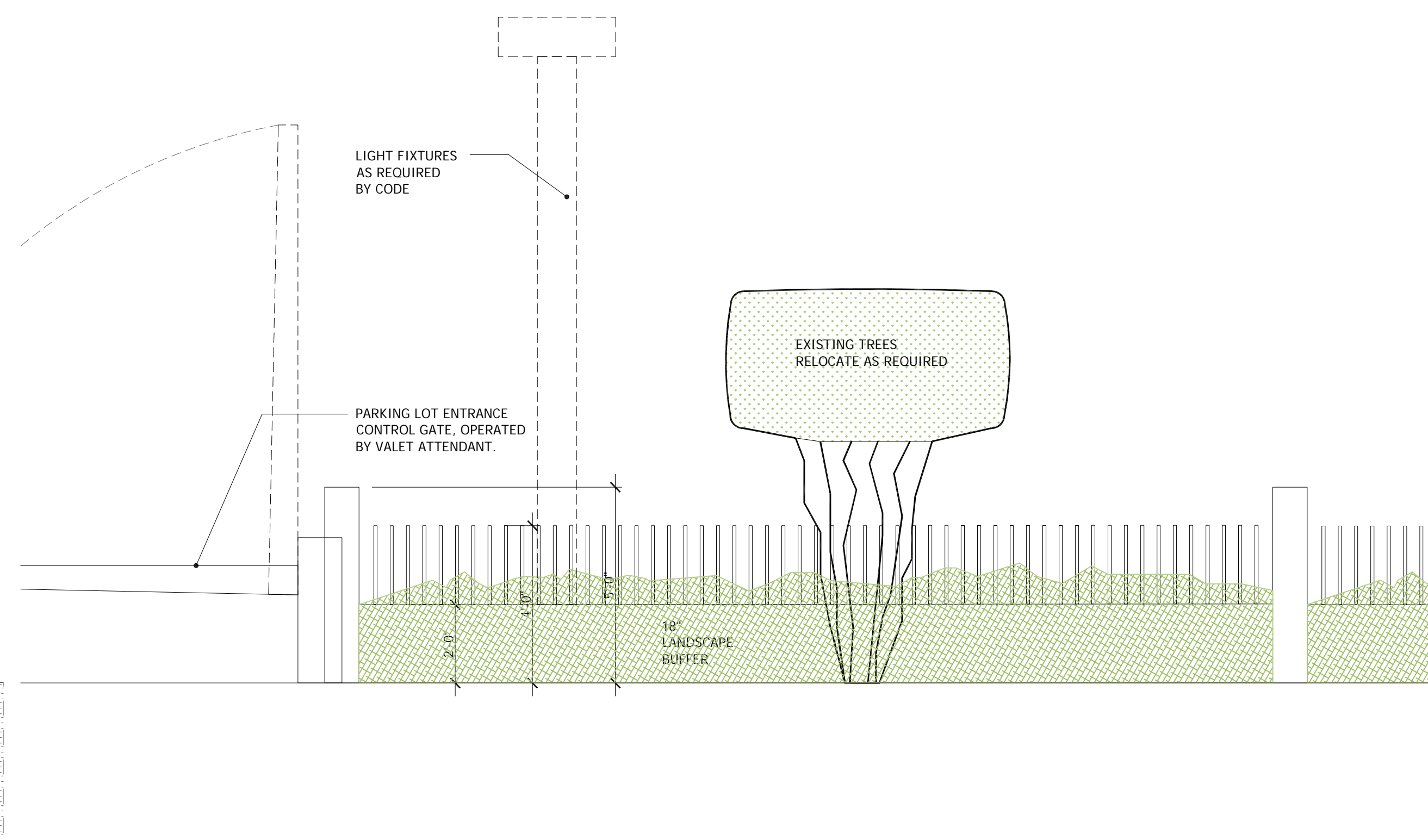
PROPOSED VALET PARKING LOT PLAN

PLAN LEGEND

- PROPERTY LINE ---
- RIGHT OF WAY
- LANDSCAPE GREEN AREA
- VEHICULAR SURFACE
- CONCRETE CURB
- LOW WALL WITH PICKETS UNIVERSITY DRIVE
- 6 FOOT HIGH PERIMETER



3 VALET PARKING LOT STUDY- PARTIAL CROSS SECTION DIAGRAM
SCALE: 3/8"=1'-0"

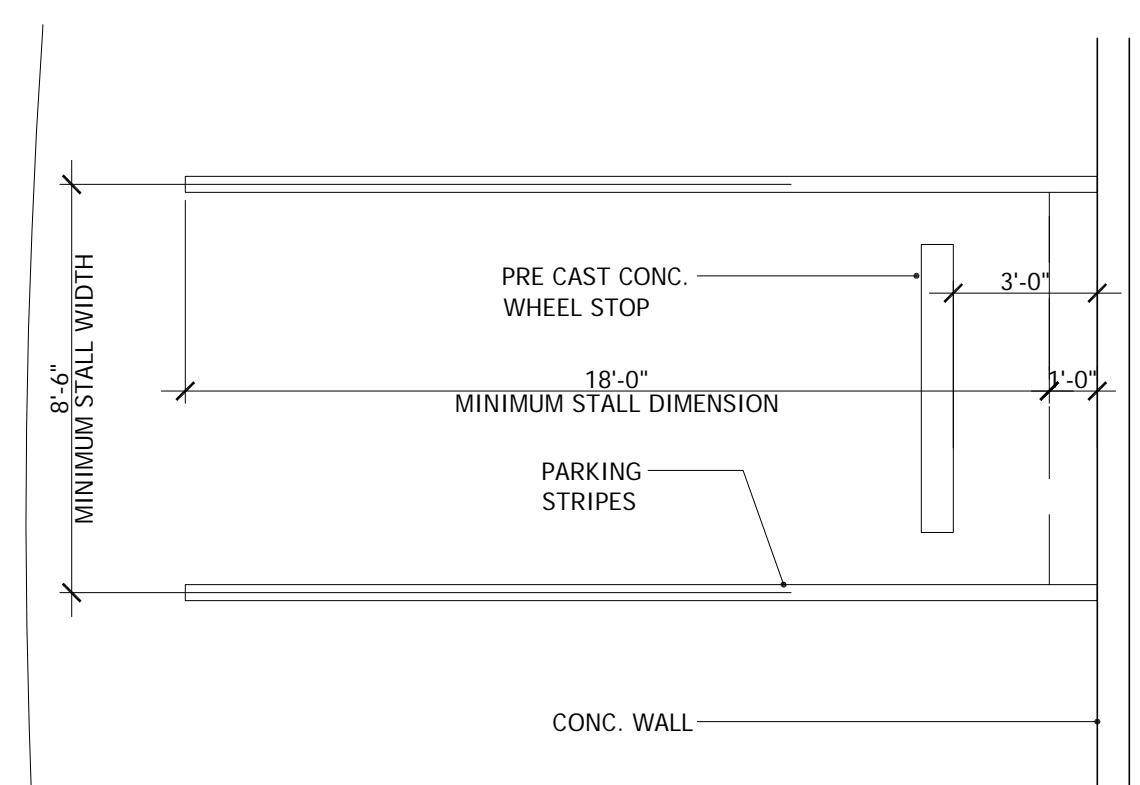


2 VALET PARKING LOT STUDY- PARTIAL STREET ELEVATION DIAGRAM
SCALE: 3/8"=1'-0"

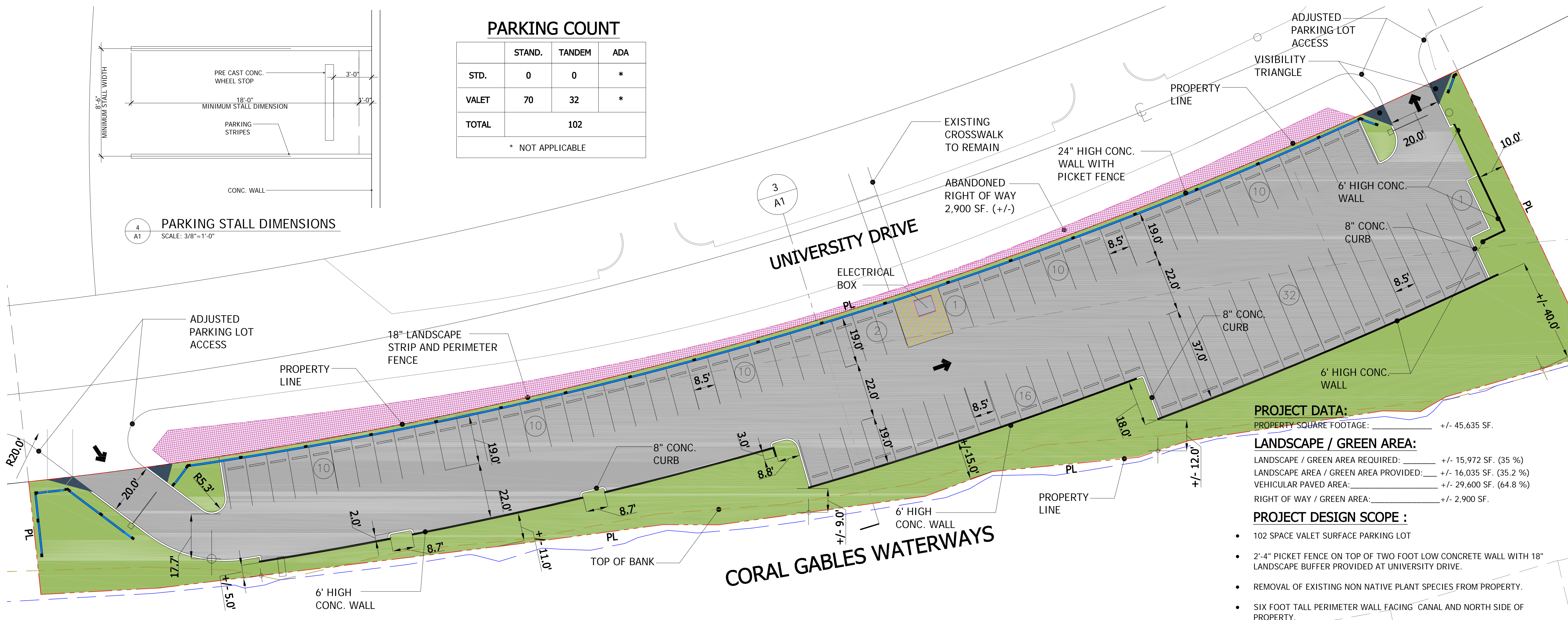
PARKING COUNT

	STAND.	TANDEM	ADA
STD.	0	0	*
VALET	70	32	*
TOTAL	102		

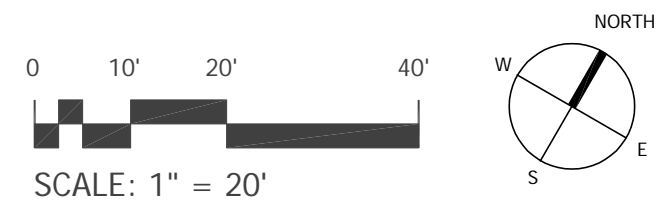
* NOT APPLICABLE



4 PARKING STALL DIMENSIONS
SCALE: 3/8"=1'-0"



1 PROPOSED VALET PARKING LOT PLAN
SCALE: 1"=20'



PROJECT DATA:
PROPERTY SQUARE FOOTAGE: +/- 45,635 SF.
LANDSCAPE / GREEN AREA:
LANDSCAPE / GREEN AREA REQUIRED: +/- 15,972 SF. (35.2%)
LANDSCAPE AREA / GREEN AREA PROVIDED: +/- 16,035 SF. (35.2%)
VEHICULAR PAVED AREA: +/- 29,600 SF. (64.8%)
RIGHT OF WAY / GREEN AREA: +/- 2,900 SF.

- PROJECT DESIGN SCOPE :**
- 102 SPACE VALET SURFACE PARKING LOT
 - 2'-4" PICKET FENCE ON TOP OF TWO FOOT LOW CONCRETE WALL WITH 18" LANDSCAPE BUFFER PROVIDED AT UNIVERSITY DRIVE.
 - REMOVAL OF EXISTING NON NATIVE PLANT SPECIES FROM PROPERTY.
 - SIX FOOT TALL PERIMETER WALL FACING CANAL AND NORTH SIDE OF PROPERTY.
 - PERIMETER LANDSCAPE BUFFER, MAXIMIZED TO HIDE PARKING LOT FROM CANAL SIDE AND ADJACENT PROPERTY.
 - REFER TO CONCEPTUAL LANDSCAPE PLANS FOR ADDITIONAL INFORMATION.



DISPOSITION LEGEND

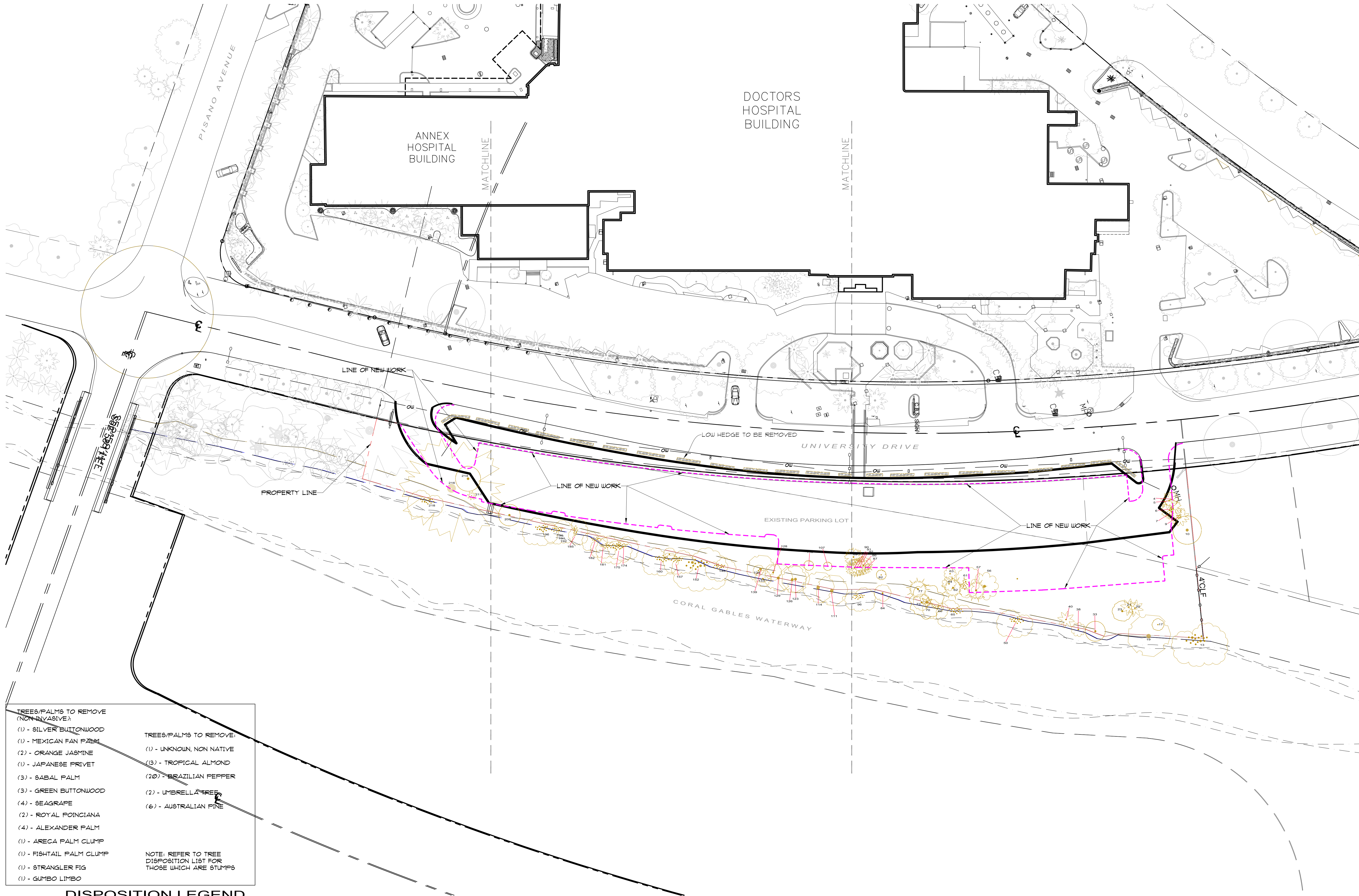
	EXISTING TO REMAIN		TO BE TRANSPLANTED		TO BE REMOVED
--	--------------------	--	--------------------	--	---------------

CONCEPTUAL OVERALL DISPOSITION

0 10' 30' 50' SCALE: 1"=30.0'

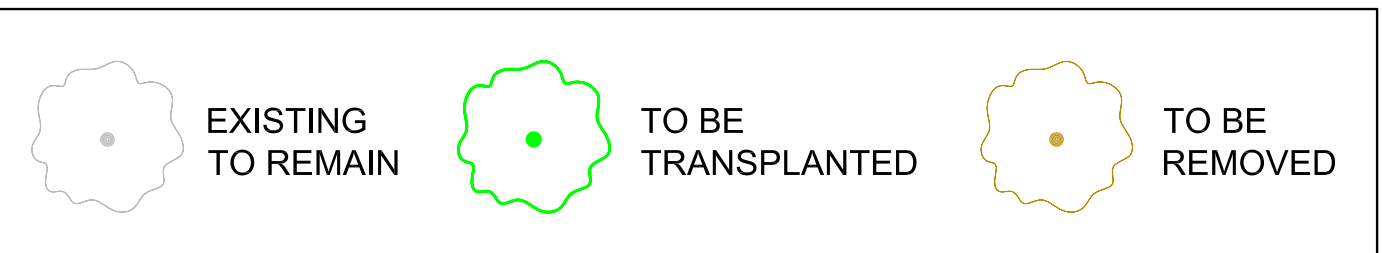
THIS DRAWING IS TO BE USED FOR THE PROJECT AND SITE ONLY. THE DRAWINGS ARE THE PROPERTY OF THE LANDSCAPE ARCHITECT AND ARE NOT TO BE REPRODUCED, COPIED, OR ALTERED IN WHOLE OR IN PART. IT IS ONLY TO BE SPECIFICALLY IDENTIFIED HEREIN AND IS NOT TO BE USED IN ANY OTHER PROJECT. THESE PLANS ARE TO BE SUBMITTED FOR REVIEW, APPROVAL, AND PERMIT BY THE APPROPRIATE BUILDING DEPARTMENT AND ANY OTHER REQUIRED GOVERNMENTAL AUTHORITIES PRIOR TO COMMENCEMENT OF ANY WORK. WRITTEN PERMISSIONS SHALL HAVE PRECEDENCE OVER SCALE. © COPYRIGHT BY GEOMANTIC DESIGN, INC.

<p>PROJECT TITLE</p> <p>DOCTORS HOSPITAL VALET PARKING AREA 5000 UNIVERSITY DRIVE CORAL GABLES, FL</p>	<p>LANDSCAPE ARCHITECT</p> <p>GEOMANTIC DESIGNS, INC. LANDSCAPE ARCHITECTURE</p> <p>ROBERT PARSLEY A.S.L.A. CORAL GABLES, FL PHONE: 305-665-6868 FAX: 305-665-6825</p>
<p>REVISION DATE(S)</p>	<p>DATE</p> <p>5/5/2021</p>
<p>SHEET TITLE</p> <p>LANDSCAPE CONCEPTUAL OVERALL DISPOSITION</p>	
<p>LD-1</p>	



- TREES/PALMS TO REMOVE (NON-INVASIVE):**
- (1) - SILVER BUTTWOOD
 - (1) - MEXICAN FAN PALM
 - (2) - ORANGE JASMINE
 - (1) - JAPANESE PRIVET
 - (3) - SABAL PALM
 - (3) - GREEN BUTTWOOD
 - (4) - SEAGRAPE
 - (2) - ROYAL POINCIANA
 - (4) - ALEXANDER PALM
 - (1) - ARECA PALM CLUMP
 - (1) - FISHTAIL PALM CLUMP
 - (1) - STRANGLER FIG
 - (1) - GUMBO LIMBO
- TREES/PALMS TO REMOVE:**
- (1) - UNKNOWN, NON NATIVE
 - (13) - TROPICAL ALMOND
 - (20) - BRAZILIAN PEPPER
 - (2) - UMBRELLA TREE
 - (6) - AUSTRALIAN PINE
- NOTE: REFER TO TREE DISPOSITION LIST FOR THOSE WHICH ARE STUMPS**

DISPOSITION LEGEND



CONCEPTUAL DISPOSITION - TREES/PALMS TO BE REMOVED

0 10' 30' 50' SCALE: 1"=30.0'

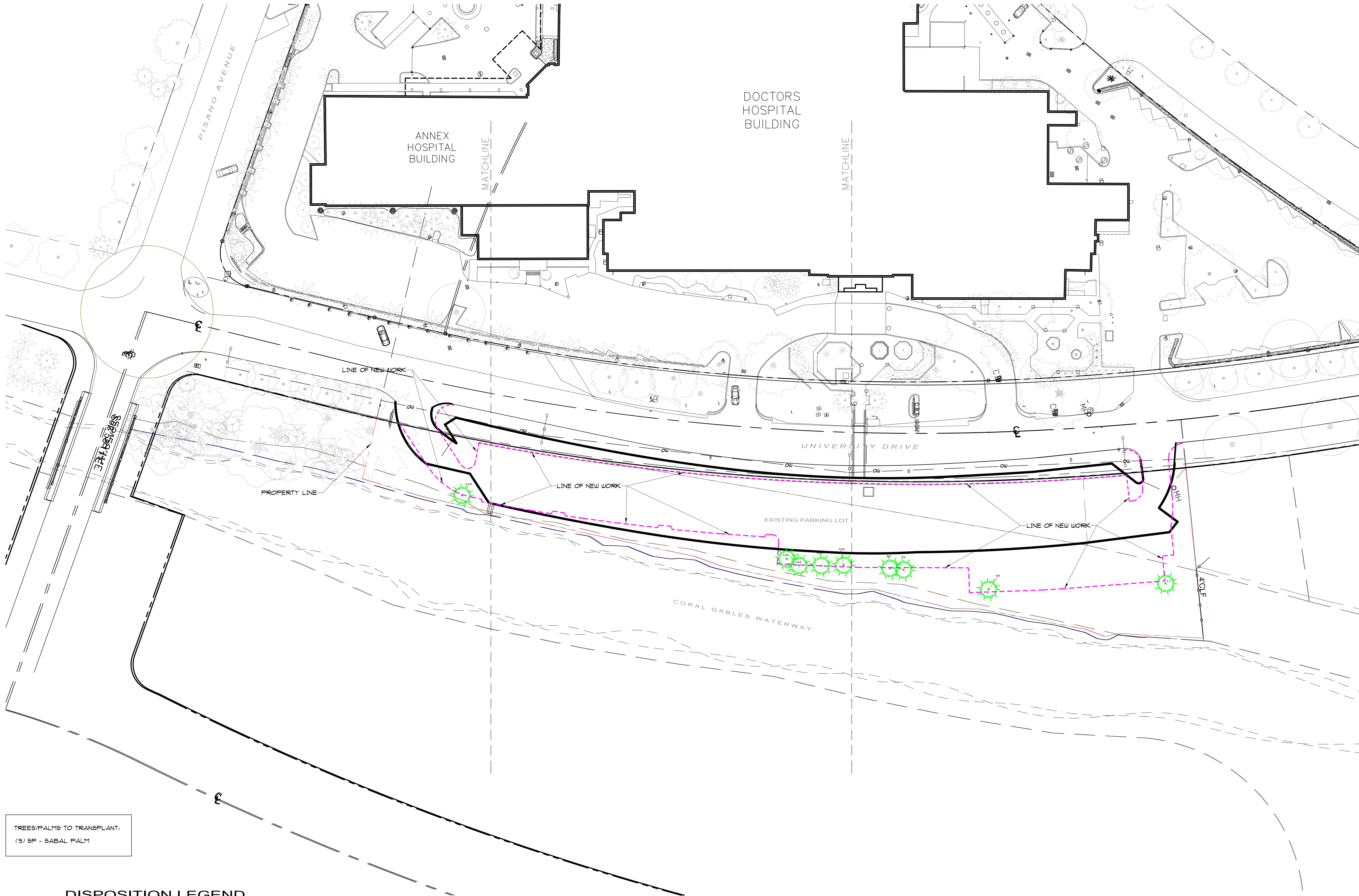
THIS DRAWING IS TO BE USED FOR THE PROJECT AND SITE ONLY. THE DRAWINGS ARE THE PROPERTY OF THE LANDSCAPE ARCHITECT AND ARE NOT TO BE REPRODUCED, COPIED, OR ALTERED IN WHOLE OR IN PART. IT IS ONLY TO BE SPECIALLY IDENTIFIED HEREIN AND NOT TO BE USED IN ANY OTHER PROJECT. THESE PLANS ARE TO BE SUBMITTED FOR REVIEW, APPROVAL, AND PERMIT BY THE APPROPRIATE BUILDING DEPARTMENT AND ANY OTHER REQUIRED GOVERNMENTAL AUTHORITIES PRIOR TO COMMENCEMENT OF ANY WORK. WRITTEN PERMISSIONS SHALL HAVE PRECEDENCE OVER SCALE. © COPYRIGHT BY GEOMANTIC DESIGN, INC.

GEOMANTIC DESIGN, INC.
 LANDSCAPE ARCHITECTURE
 ROBERT PARSLEY A.S.L.A.
 2325 GALLERIA DRIVE, CORAL GABLES, FL 33134
 PHONE: 305-565-6888 FAX: 305-565-6825

LANDSCAPE CONCEPTUAL DISPOSITION TREES/PALMS TO BE REMOVED

DOCTORS HOSPITAL VALET PARKING AREA
 5000 UNIVERSITY DRIVE CORAL GABLES, FL

SHEET TITLE
 PROJECT TITLE
 REVISION DATE(S)
 DATE: 5/5/2021
LD-2



TREES/PALMS TO TRANSPLANT:
 (9) 8P - SABAL PALM

DISPOSITION LEGEND

	EXISTING TO REMAIN		TO BE TRANSPLANTED		TO BE REMOVED
--	--------------------	--	--------------------	--	---------------

CONCEPTUAL DISPOSITION - PALMS TO BE TRANSPLANTED

0 10' 30' 50' SCALE: 1"=30.0'

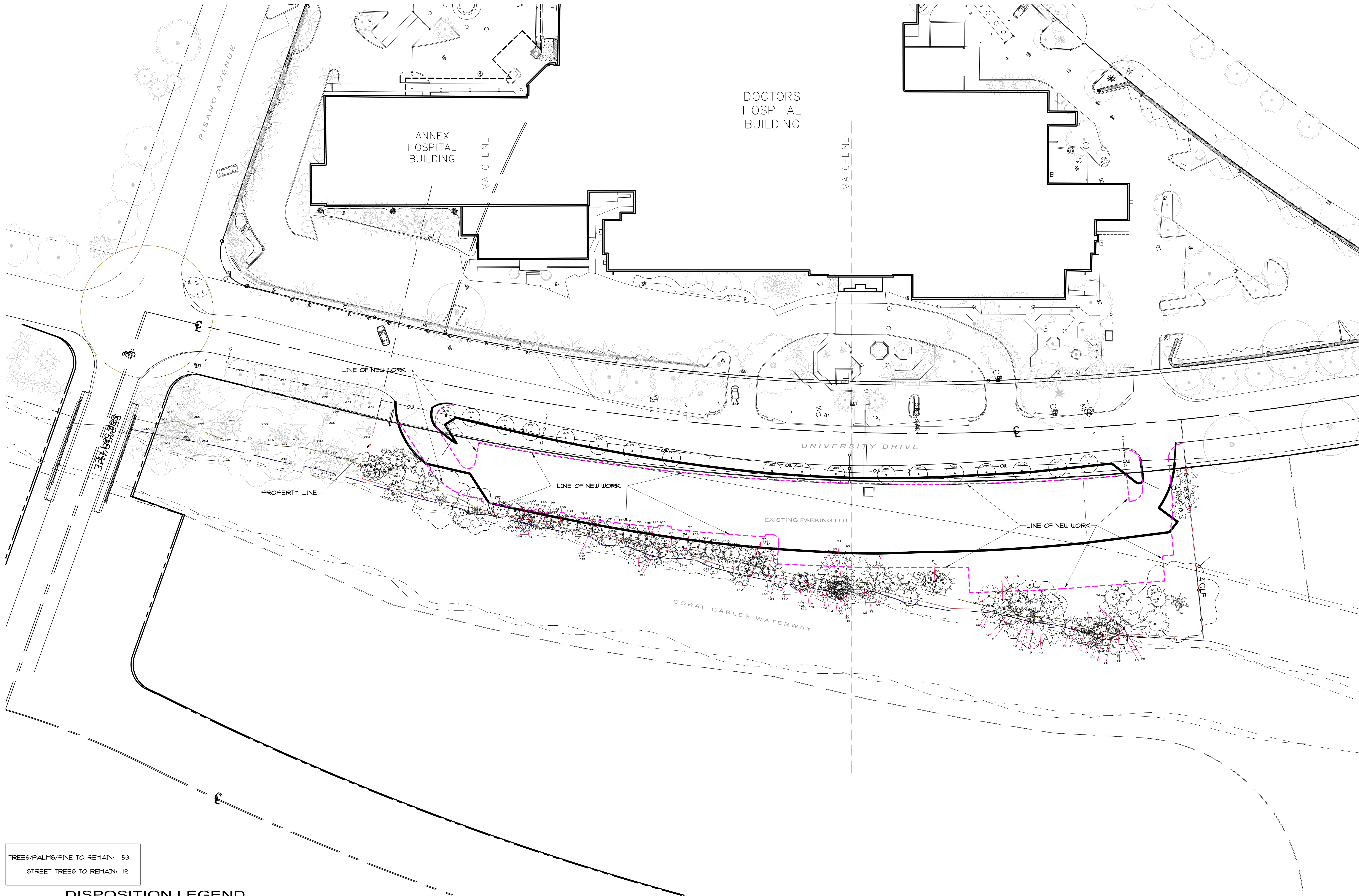
THIS DRAWING IS TO BE USED FOR THE PROJECT AND SITE ONLY. THE DRAWINGS ARE THE PROPERTY OF THE LANDSCAPE ARCHITECT AND ARE NOT TO BE REPRODUCED, COPIED, OR ALTERED IN WHOLE OR IN PART. IT IS ONLY TO BE SPECIFICALLY IDENTIFIED HEREIN AND NOT TO BE USED IN ANY OTHER PROJECT. THESE PLANS ARE TO BE SUBMITTED FOR REVIEW, APPROVAL, AND PERMIT BY THE APPROPRIATE BUILDING DEPARTMENT AND ANY OTHER REQUIRED GOVERNMENTAL AUTHORITIES PRIOR TO COMMENCEMENT OF ANY WORK. WRITTEN PERMISSIONS SHALL HAVE PRECEDENCE OVER SCALE. © COPYRIGHT BY GEOMANTIC DESIGN, INC.

GEOMANTIC DESIGN, INC.
 LANDSCAPE ARCHITECTURE
 ROBERT PARSLEY A.S.L.A.
 2325 GALLERIA DRIVE, CORAL GABLES, FL 33134
 PHONE: 305-565-6688 FAX: 305-565-6425

LANDSCAPE CONCEPTUAL DISPOSITION PALMS TO BE TRANSPLANTED

DOCTORS HOSPITAL VALET PARKING AREA
 5000 UNIVERSITY DRIVE CORAL GABLES, FL

SHEET TITLE: _____
 PROJECT TITLE: _____
 REVISION DATE(S): _____
 DATE: 5/5/2021
LD-3



TREES/PALMS/PINE TO REMAIN: 153
 STREET TREES TO REMAIN: 19

DISPOSITION LEGEND

	EXISTING TO REMAIN		TO BE TRANSPLANTED		TO BE REMOVED
--	--------------------	--	--------------------	--	---------------

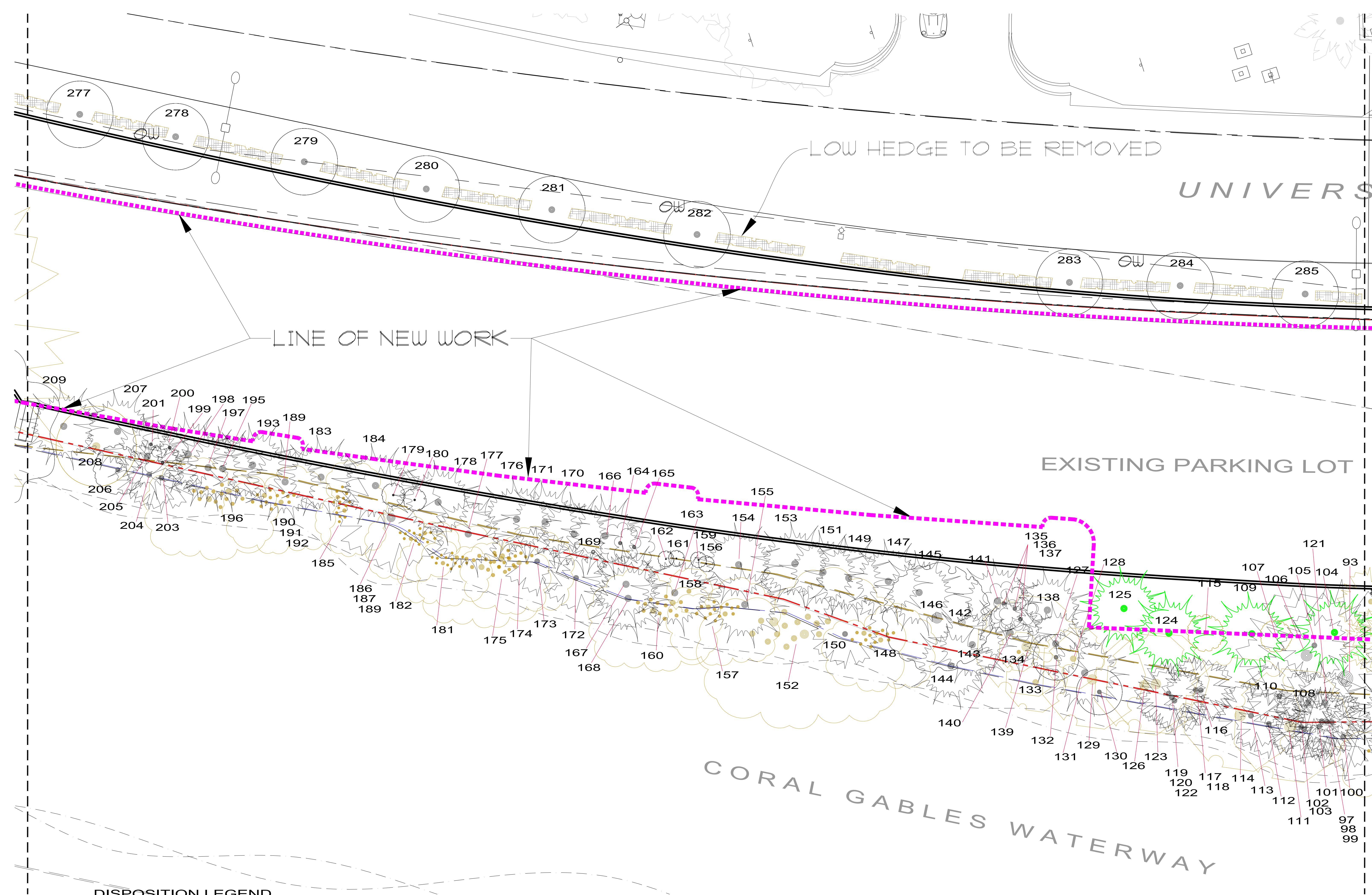
CONCEPTUAL DISPOSITION - TREES/PALMS TO REMAIN

0 10' 30' 50' SCALE: 1"=30.0'

THIS DRAWING IS TO BE USED FOR THE PROJECT AND SITE ONLY. THE DRAWINGS ARE THE PROPERTY OF THE LANDSCAPE ARCHITECT AND ARE NOT TO BE REPRODUCED, COPIED, OR ALTERED IN WHOLE OR IN PART. IT IS ONLY TO BE SPECIFICALLY IDENTIFIED HEREIN AND IS NOT TO BE USED IN ANY OTHER PROJECT. THESE PLANS ARE TO BE SUBMITTED FOR REVIEW, APPROVAL, AND PERMIT BY THE APPROPRIATE BUILDING DEPARTMENT AND ANY OTHER REQUIRED GOVERNMENTAL AGENCIES PRIOR TO COMMENCEMENT OF ANY WORK. WRITTEN PERMISSIONS SHALL HAVE PRECEDENCE OVER SCALE. © COPYRIGHT BY GEOMANTIC DESIGN, INC.

PROJECT TITLE	LANDSCAPE CONCEPTUAL DISPOSITION TREES/PALMS TO REMAIN
REVISION DATE(S)	
DATE	5/5/2021
SHEET TITLE	LD-4

GEOMANTIC DESIGN, INC.
 LANDSCAPE ARCHITECTURE
 ROBERT PARSLEY A.S.L.A.
 2325 GARDEN LANE, CORAL GABLES, FL 33134
 PHONE: 305-665-6888 FAX: 305-665-6825



LINE OF NEW WORK

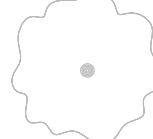
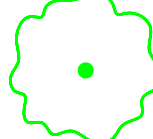
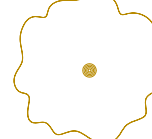
LOW HEDGE TO BE REMOVED

UNIVERSITY

EXISTING PARKING LOT

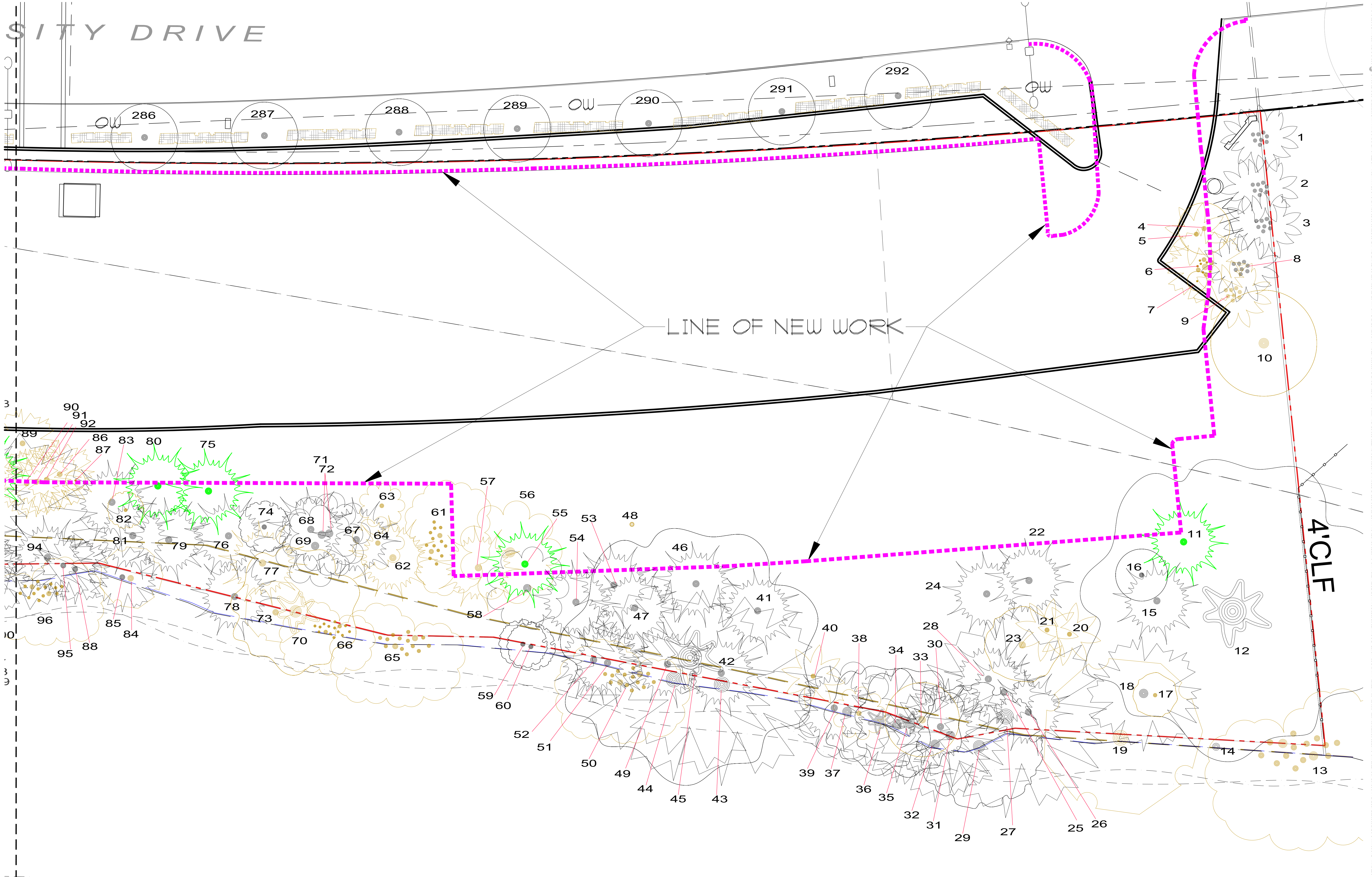
CORAL GABLES WATERWAY

DISPOSITION LEGEND

	EXISTING TO REMAIN		TO BE TRANSPLANTED		TO BE REMOVED
--	--------------------	---	--------------------	---	---------------

DISPOSITION - AREA 2
 SCALE: 1/8" = 1'-0"





SITY DRIVE



LINE OF NEW WORK

4' CLF

DISPOSITION LEGEND

 EXISTING TO REMAIN
  TO BE TRANSPLANTED
  TO BE REMOVED

DISPOSITION - AREA 3
 SCALE: 1/8" = 1'-0"


THIS DRAWING IS TO BE USED FOR THE PROJECT AND SITE ONLY. THE DRAWING IS THE PROPERTY OF THE LANDSCAPE ARCHITECT AND IS NOT TO BE REPRODUCED, COPIED, OR ALTERED IN WHOLE OR IN PART. IT IS ONLY TO BE SPECIFICALLY REFERENCED HEREIN AND NOT TO BE USED IN ANY OTHER PROJECT. THESE PLANS ARE TO BE SUBMITTED FOR REVIEW, APPROVAL, AND PERMIT BY THE APPROPRIATE BUILDING DEPARTMENT AND ANY OTHER REQUIRED GOVERNMENTAL AUTHORITIES PRIOR TO COMMENCEMENT OF ANY WORK. WRITTEN PERMISSION SHALL BE REQUIRED FOR ANY REVISIONS. © COPYRIGHT BY GEOMANTIC DESIGN, INC.

GEOMANTIC DESIGN, INC.
 LANDSCAPE ARCHITECTURE
 ROBERT PARSLEY A.S.L.A.
 2325 GALANDESS BL. CORAL GABLES, FL 33134
 PHONE: 305-665-6868 FAX: 305-665-6425

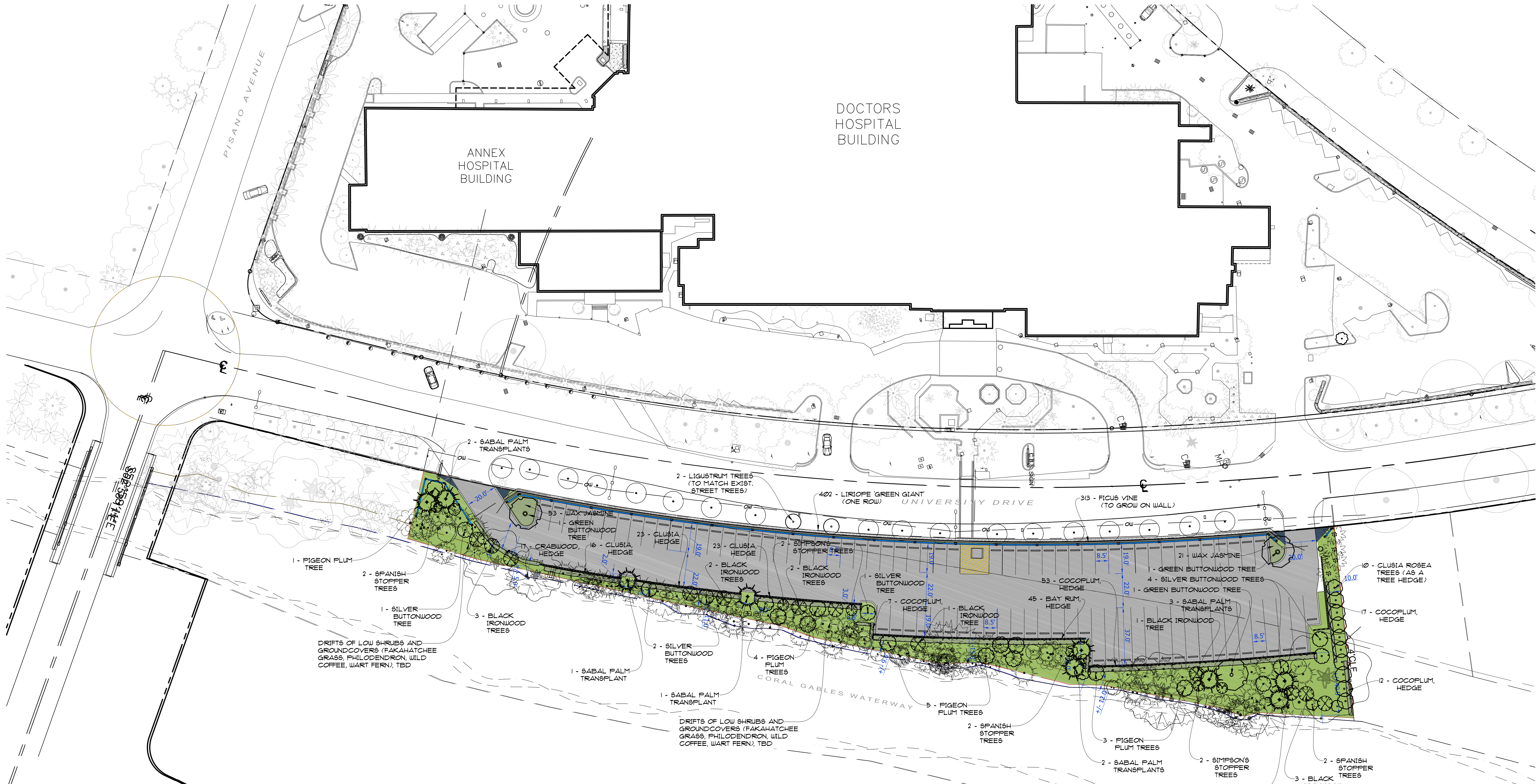
PROJECT TITLE: **DOCTORS HOSPITAL VALET PARKING AREA**
 5000 UNIVERSITY DRIVE CORAL GABLES, FL

SHEET TITLE: **LANDSCAPE DISPOSITION - AREA 3**

REVISION DATE(S):
 DATE: 5/5/2021
LD-7

Tree #	Common Name	Botanical Name	Trunk DBH (in)	Overall Height (ft)	Canopy Spread (ft)	Condition	Disposition	Comments (per arborist Lisa Hammer's Tree Evaluation)
1	Areca Palm	<i>Dypsis lutescens</i>	multi	20	15	Fair	Remain	nutritional deficiencies
2	Areca Palm	<i>Dypsis lutescens</i>	multi	22	15	Fair	Remain	nutritional deficiencies
3	Areca Palm	<i>Dypsis lutescens</i>	multi	22	15	Fair	Remain	nutritional deficiencies
4	Orange Jasmine	<i>Murraya paniculata</i>	7 @ 1-3	15	12	Fair	Remove (proposed parking lot)	topped
5	Solitaire/Alexander Palm	<i>Ptychosperma elegans</i>	3	25	10	Good	Remove (proposed parking lot)	
6	Fishtail Palm	<i>Caryota mitis</i>	multi	25	15	Fair-Good	Remove (proposed parking lot)	monocarpic species fruiting
7	Orange Jasmine	<i>Murraya paniculata</i>	3.5	4	2	Poor	Remove (proposed parking lot)	topped
8	Areca Palm	<i>Dypsis lutescens</i>	multi	20	12	Fair	Remain	some stems topped; nutritional deficiencies
9	Areca Palm	<i>Dypsis lutescens</i>	multi	20	10	Fair	Remove (proposed parking lot)	nutritional deficiencies
10	Queensland Umbrella	<i>Schefflera actinophylla</i>	26	35	25	Fair	Remove	invasive exotic species
11	Cabbage Palm	<i>Sabal palmetto</i>	18	25	12	Good	Transplant	DBH includes boots
12	Strangler Fig	<i>Ficus aurea</i>	32 + 30 + 18	40	50	Fair-Good	Remain	old storm damage
13	Brazilian Pepper	<i>Schinus terebinthifolius</i>	cluster	25	30	Poor	Remove	invasive exotic species
14	Non-Existent							old dead Australian pine stump
15	Cabbage Palm	<i>Sabal palmetto</i>	12	25	10	Good	Remain	
16	Gumbo Limbo	<i>Bursera simaruba</i>	3.5	18	10	Good	Remain	
17	Royal Poinciana	<i>Delonix regia</i>	2.5	12	8	Poor	Remove	topped
18	Australian Pine	<i>Casuarina equisetifolia</i>	32	75	50	Fair-Poor	Remain	damaged; invasive exotic species
19	Tropical Almond	<i>Terminalia catappa</i>	9.5	30	25	Good	Remove	invasive exotic species
20	Solitaire/Alexander Palm	<i>Ptychosperma elegans</i>	4	20	10	Good	Remove	
21	Solitaire/Alexander Palm	<i>Ptychosperma elegans</i>	3	18	10	Good	Remove	
22	Cabbage Palm	<i>Sabal palmetto</i>	13	25	10	Good	Remain	
23	Royal Poinciana	<i>Delonix regia</i>	4.5	25	15	Fair	Remove	
24	Cabbage Palm	<i>Sabal palmetto</i>	13.5	30	12	Good	Remain	
25	Cabbage Palm	<i>Sabal palmetto</i>	13	18	10	Good	Remain	DBH includes boots
26	Cabbage Palm	<i>Sabal palmetto</i>	17	10	10	Good	Remain	DBH includes boots
27	Australian Pine	<i>Casuarina equisetifolia</i>	39	80	75	Fair	Remain	damaged; invasive exotic species
28	Cabbage Palm	<i>Sabal palmetto</i>	14	8	10	Good	Remain	DBH includes boots
29	Green Buttonwood	<i>Conocarpus erectus</i>	8.5 + 8.5	25	35	Good	Remain	
30	Cabbage Palm	<i>Sabal palmetto</i>	13	8	8	Fair-Good	Remain	DBH includes boots
31	Australian Pine	<i>Casuarina equisetifolia</i>	13	40	30	Fair	Remain	invasive exotic species
32	Australian Pine	<i>Casuarina equisetifolia</i>	20	50	30	Fair	Remain	invasive exotic species
33	Queensland Umbrella	<i>Schefflera actinophylla</i>	9	30	30	Good	Remove	invasive exotic species
34	Australian Pine	<i>Casuarina equisetifolia</i>	7	18	50	Fair	Remain	invasive exotic species
35	Strangler Fig	<i>Ficus aurea</i>	18	25	25	Fair-Good	Remain	
36	Strangler Fig	<i>Ficus aurea</i>	6	25	20	Fair-Good	Remain	
37	Seagrape	<i>Coccoloba uvifera</i>	8	20	20	Fair	Remain	pruning and storm damage
38	Seagrape	<i>Coccoloba uvifera</i>	5	5	0	Poor	Remove	topped
39	Cabbage Palm	<i>Sabal palmetto</i>	10	4	6	Fair	Remain	trunk less than 4.5' in height; DBH measured at 2.5' above grade
40	Mexican Fan Palm	<i>Washingtonia robusta</i>	0	4	8	Good	Remove	too small to relocate
41	Cabbage Palm	<i>Sabal palmetto</i>	14	25	12	Good	Remain	DBH includes boots
42	Cabbage Palm	<i>Sabal palmetto</i>	8	12	10	Good	Remain	
43	Australian Pine	<i>Casuarina equisetifolia</i>	22	50	50	Fair	Remain	1 leader damaged; invasive exotic species
44	Australian Pine	<i>Casuarina equisetifolia</i>	18	60	40	Fair	Remain	invasive exotic species
45	Strangler Fig	<i>Ficus aurea</i>	32	40	60	Good	Remain	
46	Cabbage Palm	<i>Sabal palmetto</i>	12	12	2	Fair	Remain	stressed
47	Cabbage Palm	<i>Sabal palmetto</i>	14	12	3	Fair	Remain	stressed; DBH includes boots
48	Non-Existent							
49	Cabbage Palm	<i>Sabal palmetto</i>	8	30	8	Good	Remain	in canopy of tree #45
50	Brazilian Pepper	<i>Schinus terebinthifolius</i>	multi	20	40	Good	Remove	invasive exotic species
51	Cabbage Palm	<i>Sabal palmetto</i>	9	25	6	Good	Remain	
52	Cabbage Palm	<i>Sabal palmetto</i>	8	28	10	Good	Remain	
53	Cabbage Palm	<i>Sabal palmetto</i>	16	30	10	Good	Remain	DBH includes boots
54	Cabbage Palm	<i>Sabal palmetto</i>	14	25	10	Good	Remain	DBH includes boots
55	Cabbage Palm	<i>Sabal palmetto</i>	14	25	10	Good	Transplant	DBH includes boots
56	Seagrape	<i>Coccoloba uvifera</i>	4 + 3	10	12	Fair-Poor	Remove (proposed parking lot)	cut back
57	Cabbage Palm	<i>Sabal palmetto</i>	stump	0	0	Dead	Remove	
58	Seagrape	<i>Coccoloba uvifera</i>	3.5	10	8	Fair-Poor	Remain	cut back
59	Green Buttonwood	<i>Conocarpus erectus</i>	3	25	6	Good	Remain	
60	Green Buttonwood	<i>Conocarpus erectus</i>	2.5	15	6	Good	Remain	
61	Brazilian Pepper	<i>Schinus terebinthifolius</i>	stump	0	0	Poor	Remove	
62	Cabbage Palm	<i>Sabal palmetto</i>	stump	0	0	Dead	Remove	
63	Seagrape	<i>Coccoloba uvifera</i>	stump	0	0	Poor	Remove	
64	Seagrape	<i>Coccoloba uvifera</i>	stump	0	0	Poor	Remove	
65	Brazilian Pepper	<i>Schinus terebinthifolius</i>	multi	25	25	Fair	Remove	invasive exotic species
66	Brazilian Pepper	<i>Schinus terebinthifolius</i>	multi	25	25	Fair	Remove	invasive exotic species
67	Cabbage Palm	<i>Sabal palmetto</i>	15	25	10	Good	Remain	DBH includes boots
68	Cabbage Palm	<i>Sabal palmetto</i>	15	25	10	Good	Remain	DBH includes boots
69	Seagrape	<i>Coccoloba uvifera</i>	8 @ 1-2	10	10	Poor	Remain	#69, 71, 72 part of same cluster - all cut back
70	Strangler Fig	<i>Ficus aurea</i>	24	25	20	Very Poor	Remove	main leader decayed/broken; nearly dead
71	Seagrape	<i>Coccoloba uvifera</i>	8 @ 1-2	10	10	Poor	Remain	#69, 71, 72 part of same cluster - all cut back
72	Seagrape	<i>Coccoloba uvifera</i>	8 @ 1-2	10	10	Poor	Remain	#69, 71, 72 part of same cluster - all cut back
73	Tropical Almond	<i>Terminalia catappa</i>	4	25	12	Good	Remove	invasive exotic species
74	Green Buttonwood	<i>Conocarpus erectus</i>	6.5	18	0	Poor	Remain	topped but flushing back
75	Cabbage Palm	<i>Sabal palmetto</i>	12	22	10	Good	Transplant	
76	Cabbage Palm	<i>Sabal palmetto</i>	15	25	10	Good	Remain	DBH includes boots
77	Cabbage Palm	<i>Sabal palmetto</i>	stump	0	0	Dead	Remove	
78	Cabbage Palm	<i>Sabal palmetto</i>	15	12	10	Good	Remain	DBH includes boots
79	Cabbage Palm	<i>Sabal palmetto</i>	15	25	10	Good	Remain	DBH includes boots
80	Cabbage Palm	<i>Sabal palmetto</i>	16	25	10	Good	Transplant	DBH includes boots
81	Cabbage Palm	<i>Sabal palmetto</i>	17	25	10	Good	Remain	DBH includes boots
82	Green Buttonwood	<i>Conocarpus erectus</i>	stump	0	0	Poor	Remove	
83	Cabbage Palm	<i>Sabal palmetto</i>	15	25	10	Good	Remain	DBH includes boots
84	Tropical Almond	<i>Terminalia catappa</i>	3.5	10	10	Good	Remove	invasive exotic species
85	Australian Pine	<i>Casuarina equisetifolia</i>	7	30	10	Good	Remain	invasive exotic species
86	Australian Pine	<i>Casuarina equisetifolia</i>	9	40	25	Good	Remove (proposed parking lot)	invasive exotic species
87	Gumbo Limbo	<i>Bursera simaruba</i>	stump	0	0	Poor	Remove	
88	Australian Pine	<i>Casuarina equisetifolia</i>	8.5	40	12	Good	Remain	invasive exotic species
89	Australian Pine	<i>Casuarina equisetifolia</i>	4.5	40	10	Good	Remove (proposed parking lot)	invasive exotic species
90	Australian Pine	<i>Casuarina equisetifolia</i>	5.5	40	10	Good	Remove (proposed parking lot)	invasive exotic species
91	Australian Pine	<i>Casuarina equisetifolia</i>	3.5	40	10	Good	Remove (proposed parking lot)	invasive exotic species
92	Australian Pine	<i>Casuarina equisetifolia</i>	3	15	3	Poor	Remove (proposed parking lot)	topped; invasive exotic species
93	Australian Pine	<i>Casuarina equisetifolia</i>	35	70	40	Fair-Good	Remain	invasive exotic species
94	Cabbage Palm	<i>Sabal palmetto</i>	8	16	10	Fair-Good	Remain	thin trunk
95	Australian Pine	<i>Casuarina equisetifolia</i>	9	40	12	Good	Remain	invasive exotic species
96	Brazilian Pepper	<i>Schinus terebinthifolius</i>	multi	15	25	Fair	Remove	invasive exotic species
97	Australian Pine	<i>Casuarina equisetifolia</i>	4	30	12	Fair	Remain	invasive exotic species
98	Australian Pine	<i>Casuarina equisetifolia</i>	4	30	12	Fair	Remain	invasive exotic species
99	Australian Pine	<i>Casuarina equisetifolia</i>	4	30	12	Fair	Remain	invasive exotic species
100	Australian Pine	<i>Casuarina equisetifolia</i>	4	30	12	Fair	Remain	invasive exotic species

101	Australian Pine	<i>Casuarina equisetifolia</i>	8	30	12	Fair	Remain		invasive exotic species
102	Australian Pine	<i>Casuarina equisetifolia</i>	3	30	12	Fair	Remain		invasive exotic species
103	Australian Pine	<i>Casuarina equisetifolia</i>	3	30	12	Fair	Remain		invasive exotic species
104	Cabbage Palm	<i>Sabal palmetto</i>	15	22	10	Good	Transplant		DBH includes boots
105	Australian Pine	<i>Casuarina equisetifolia</i>	4	30	6	Fair	Remain		invasive exotic species
106	Australian Pine	<i>Casuarina equisetifolia</i>	31	80	40	Fair	Remain		trunk galls; invasive exotic species
107	Green Buttonwood	<i>Conocarpus erectus</i>	4	10	4	Fair	Remove (proposed parking lot)		cut back
108	Australian Pine	<i>Casuarina equisetifolia</i>	4.5	40	10	Good	Remain		invasive exotic species
109	Cabbage Palm	<i>Sabal palmetto</i>	15	28	12	Good	Transplant		DBH includes boots
110	Australian Pine	<i>Casuarina equisetifolia</i>	5	25	20	Good	Remain		invasive exotic species
111	Tropical Almond	<i>Terminalia catappa</i>	8	22	12	Good	Remove		invasive exotic species
112	Australian Pine	<i>Casuarina equisetifolia</i>	8	25	15	Good	Remain		invasive exotic species
113	Australian Pine	<i>Casuarina equisetifolia</i>	4	15	10	Good	Remain		invasive exotic species
114	Tropical Almond	<i>Terminalia catappa</i>	4 + 4.5	22	20	Good	Remove		invasive exotic species
115	Green Buttonwood	<i>Conocarpus erectus</i>	7	12	8	Fair-Poor	Remove (proposed parking lot)		topped, cut back, trunk damage
116	Non-Existent								
117	Australian Pine	<i>Casuarina equisetifolia</i>	4	20	10	Fair	Remain		invasive exotic species
118	Australian Pine	<i>Casuarina equisetifolia</i>	4	20	10	Fair	Remain		invasive exotic species
119	Australian Pine	<i>Casuarina equisetifolia</i>	8	25	10	Fair	Remain		invasive exotic species
120	Australian Pine	<i>Casuarina equisetifolia</i>	6	25	10	Fair	Remain		invasive exotic species
121	Cabbage Palm	<i>Sabal palmetto</i>	8.5	12	10	Fair	Remain		
122	Australian Pine	<i>Casuarina equisetifolia</i>	3	15	10	Fair	Remain		invasive exotic species
123	Tropical Almond	<i>Terminalia catappa</i>	4	20	10	Good	Remove		invasive exotic species
124	Cabbage Palm	<i>Sabal palmetto</i>	16	25	12	Good	Transplant		DBH includes boots
125	Cabbage Palm	<i>Sabal palmetto</i>	15	12	12	Good	Transplant		DBH includes boots
126	Tropical Almond	<i>Terminalia catappa</i>	4.5	20	10	Good	Remove		invasive exotic species
127	Cabbage Palm	<i>Sabal palmetto</i>	15	10	10	Good	Remain		DBH includes boots
128	Tropical Almond	<i>Terminalia catappa</i>	1.5 + 2 + 2.5	15	12	Good	Remove		invasive exotic species
129	Tropical Almond	<i>Terminalia catappa</i>	8	20	12	Good	Remove		invasive exotic species
130	Gumbo Limbo	<i>Bursera simaruba</i>	3	18	8	Fair	Remain		
131	Cabbage Palm	<i>Sabal palmetto</i>	7	12	8	Fair	Remain		
132	West Indies Mahogany	<i>Swietenia mahagoni</i>	3	20	8	Good	Remain		
133	Tropical Almond	<i>Terminalia catappa</i>	8	30	10	Good	Remove		invasive exotic species
134	Tropical Almond	<i>Terminalia catappa</i>	2.5	20	5	Good	Remove		invasive exotic species
135	Seagrape	<i>Coccoloba uvifera</i>	3	10	5	Fair	Remain		cut back
136	Seagrape	<i>Coccoloba uvifera</i>	3.5 + 4	10	5	Fair	Remain		cut back
137	Seagrape	<i>Coccoloba uvifera</i>	3 + 4.5 + 2.5	10	5	Fair	Remain		cut back
138	Cabbage Palm	<i>Sabal palmetto</i>	14	8	8	Fair	Remain		
139	Tropical Almond	<i>Terminalia catappa</i>	8	30	10	Good	Remove		invasive exotic species
140	Cabbage Palm	<i>Sabal palmetto</i>	15	20	8	Fair-Good	Remain		listed on survey as seagrape; no seagrape present in this location
141	Cabbage Palm	<i>Sabal palmetto</i>	15	22	10	Good	Remain		listed on survey as seagrape; no seagrape present in this location
142	Non-Existent								
143	Cabbage Palm	<i>Sabal palmetto</i>	11	25	10	Fair-Good	Remain		
144	Cabbage Palm	<i>Sabal palmetto</i>	10	18	6	Fair	Remain		
145	Cabbage Palm	<i>Sabal palmetto</i>	13	30	12	Good	Remain		
146	Green Buttonwood	<i>Conocarpus erectus</i>	11	30	20	Fair	Remain		2 leaders cut
147	Cabbage Palm	<i>Sabal palmetto</i>	13	16	10	Good	Remain		
148	Brazilian Pepper	<i>Schinus terebinthifolius</i>	multi	20	20	Fair	Remove		invasive exotic species
149	Cabbage Palm	<i>Sabal palmetto</i>	15	25	12	Good	Remain		
150	Australian Pine	<i>Casuarina equisetifolia</i>	8	20	10	Poor	Remain		leaning; invasive exotic species
151	Cabbage Palm	<i>Sabal palmetto</i>	12	25	12	Good	Remain		shoestring fern on trunk
152	Brazilian Pepper	<i>Schinus terebinthifolius</i>	multi	25	25	Fair	Remove		invasive exotic species
153	Cabbage Palm	<i>Sabal palmetto</i>	14	25	12	Good	Remain		
154	Cabbage Palm	<i>Sabal palmetto</i>	16	25	10	Good	Remain		
155	Cabbage Palm	<i>Sabal palmetto</i>	10	25	10	Fair	Remain		crowded
156	Silver Buttonwood	<i>Conocarpus erectus-sericeus</i>	3 + 2	8	4	Fair	Remain		topped
157	Brazilian Pepper	<i>Schinus terebinthifolius</i>	8	20	20	Fair	Remove		invasive exotic species
158	Tropical Almond	<i>Terminalia catappa</i> </							



Doctors Hospital Valet Parking Area - Plant List

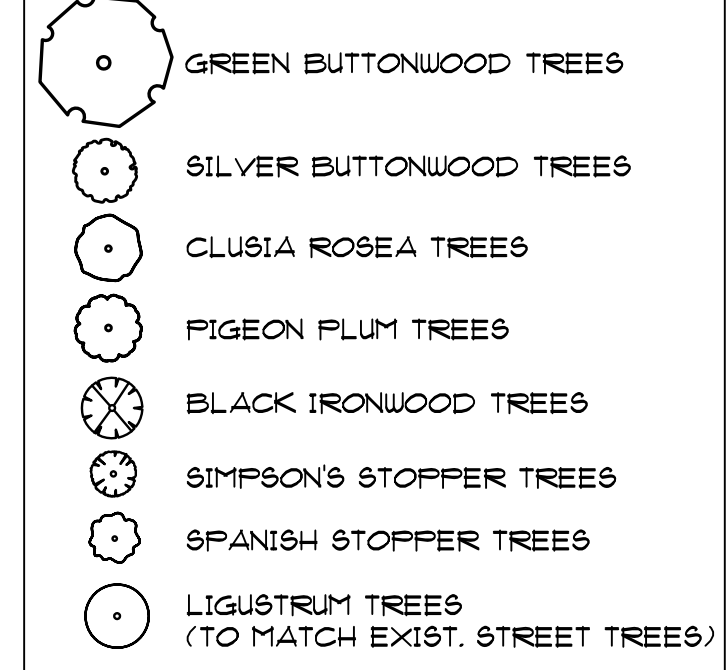
Qty.	Common Name	Botanical Name	Specs	
Trees				
12	Black Ironwood Trees	<i>Krugiodendron ferreum</i>	12' ht x 4" spr, 2" cal.	
10	Clusia Rosea Trees	<i>Clusia rosea</i>	12' ht x 4" spr, 2" cal.	standard
3	Green Buttonwood Trees	<i>Conocarpus erectus</i>	12' ht x 4" spr, 2" cal.	standard
13	Pigeon Plum Trees	<i>Coccoloba diversifolia</i>	12' ht x 4" spr, 2" cal.	
8	Silver Buttonwood Trees	<i>Conocarpus erectus 'Sericeus'</i>	12' ht x 4" spr, 2" cal.	multi
4	Simpson's Stopper Trees	<i>Myrcianthes fragrans</i>	12' ht x 4" spr, 2" cal.	multi
6	Spanish Stopper Trees	<i>Eugenia foetida</i>	12' ht x 4" spr, 2" cal.	multi
56	Total Trees			
Street Trees				
2	Ligustrum Trees	<i>Ligustrum japonicum</i>	10' ht x 5' spr, trimmed to 4' CT, to match existing	multi
2	Total Street Trees			
Screening Shrubs				
89	Cocoplum	<i>Chrysobalanus icaco 'Red Tip'</i>	6-7' ht, 25 gal.	bush, full 36" o.c. Spacing
45	Bay Rum	<i>Pimenta racemosa</i>	8' ht, 25 gal.	bush, full 36" o.c.
62	Dwarf Clusia	<i>Clusia guttifera</i>	8' ht, 25 gal.	bush, full 36" o.c.
17	Crabwood	<i>Gymnanthes lucida</i>	8' ht, 25 gal.	bush, full 36" o.c.
Groundcovers & Vines				
313	Ficus vine	<i>Ficus pumila</i>	14" x 14", 1 gal.	18" o.c.
402	Liriope 'Green Giant'	<i>Liriope muscari 'Green Giant'</i>	12" x 12", 1 gal.	15" o.c.
74	Wax Jasmine	<i>Jasminum volubile</i>	18" x 18", 3 gal.	24" o.c.
Additional Shrubs & Groundcovers				
• Drifts of low understory planting (Fakahatchee Grass, Philodendron, Wild Coffee, Wart Fern), T.B.D.				

Note: All plant material must be approved by L.A. prior to installation, no exceptions.

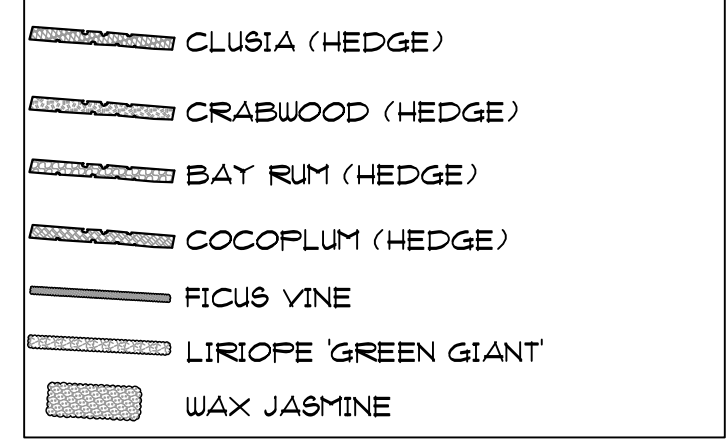
PLANTING LEGEND



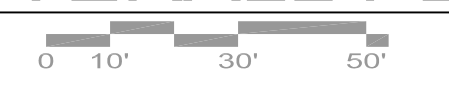
NEW PLANTING SYMBOL LEGEND



TRANSPLANTED TREES SYMBOL LEGEND



CONCEPTUAL OVERALL PLANTING PLAN
SCALE: 1"=30.0'





BLACK IRONWOOD TREE



SIMPSON'S STOPPER TREE



CRABWOOD, BUSH



SILVER SAW PALMETTO



FICUS VINE



LIRIOPE



CLUSIA GUTTIFERA HEDGE



BAY RUM TREE HEDGE



SPANISH STOPPER TREE



SILVER BUTTONWOOD TREE



CLUSIA ROSEA TREE HEDGE



WAX JASMINE



GREEN BUTTONWOOD TREE



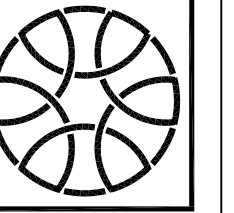
COCOPLUM HEDGE



GREEN BUTTONWOOD, BUSH



PIGEON PLUM TREE



SHEET

LANDSCAPE
CONCEPT PLANTING IMAGES

SHEET TITLE

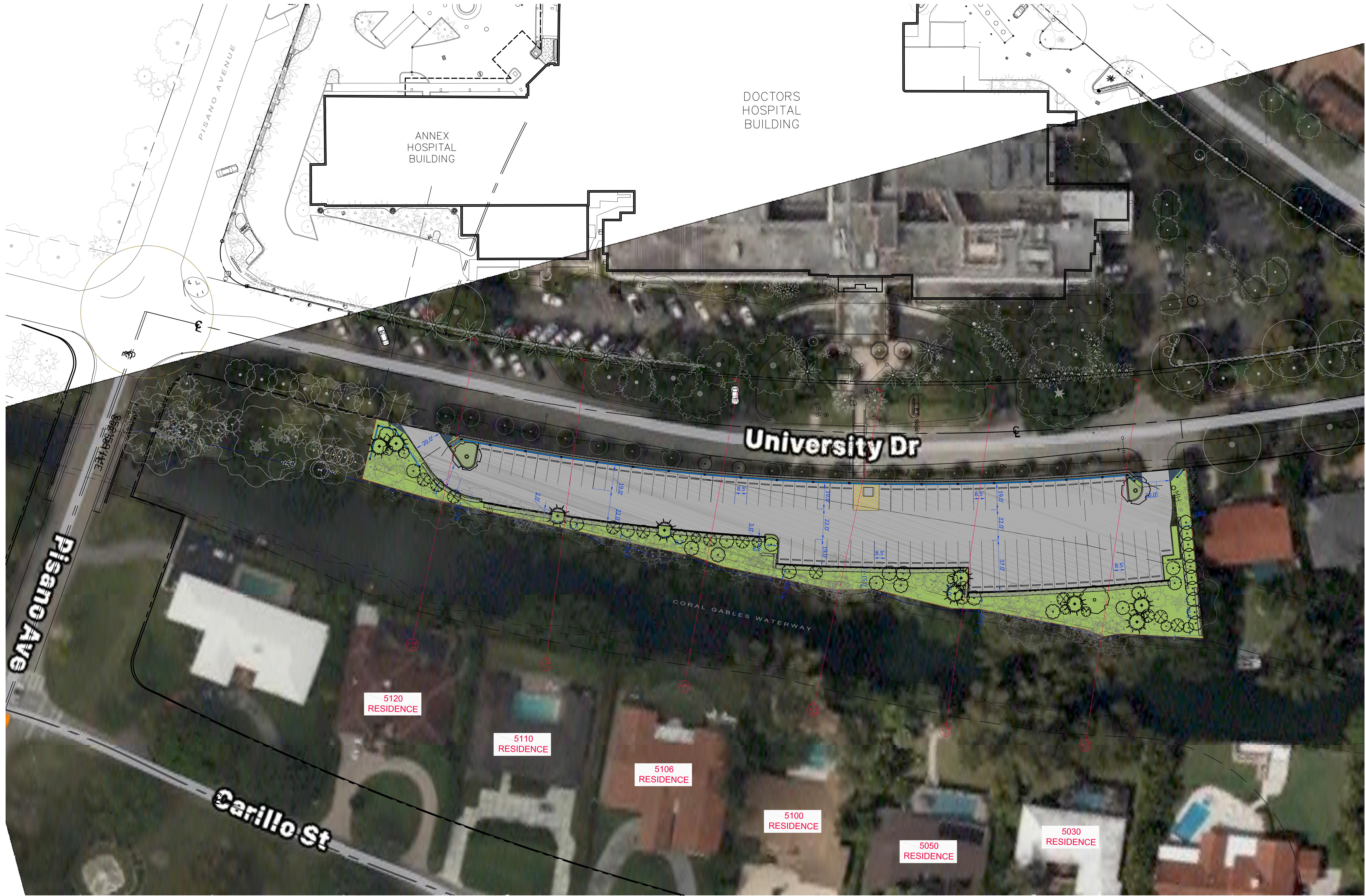
DOCTORS HOSPITAL
VALET PARKING AREA
5000 UNIVERSITY DRIVE CORAL GABLES, FL

PROJECT TITLE

REVISION DATE(S)

DATE:
4/28/2021

THIS DRAWING IS TO BE USED FOR THIS PROJECT AND SEE ONLY. THIS DRAWING IS THE PROPERTY OF THE LANDSCAPE ARCHITECT AND IS NOT TO BE REPRODUCED, COPIED, CHANGED IN WHOLE OR IN PART. IT IS ONLY TO BE SPECIFICALLY IDENTIFIED HEREIN AND IS NOT TO BE USED ON ANY OTHER PROJECT. THESE PLANS ARE TO BE SUBMITTED FOR REVIEW, APPROVAL, AND PERMIT BY THE APPROPRIATE BUILDING DEPARTMENT AND ANY OTHER REQUIRED GOVERNMENTAL AUTHORITIES PRIOR TO COMMENCEMENT OF ANY WORK. WRITTEN DIMENSIONS SHALL HAVE PRECEDENCE OVER SCALE. © COPYRIGHT BY GEOMANTIC DESIGNS, INC.



DOCTORS
HOSPITAL
BUILDING

ANNEX
HOSPITAL
BUILDING

University Dr

Pisano Ave

Carillo St

CORAL GABLES WATERWAY

5120
RESIDENCE

5110
RESIDENCE

5106
RESIDENCE

5100
RESIDENCE

5050
RESIDENCE

5030
RESIDENCE

OVERALL KEY PLAN
 0 10' 30' 50' SCALE: 1"=30.0'

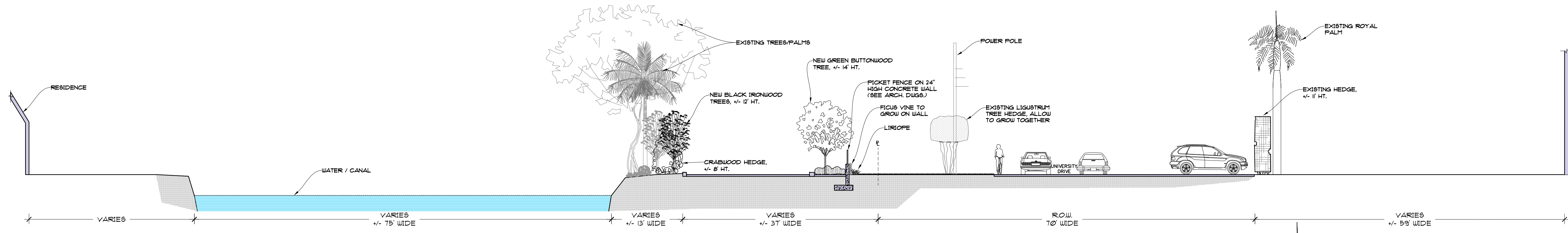
THIS DRAWING IS TO BE USED FOR THE PROJECT AND SITE ONLY. THE DRAWINGS ARE THE PROPERTY OF THE LANDSCAPE ARCHITECT AND ARE NOT TO BE REPRODUCED, COPIED, OR ALTERED IN WHOLE OR IN PART. IT IS ONLY TO BE SPECIALLY KEPT FOR REFERENCE AND NOT TO BE USED IN ANY OTHER PROJECT. THESE PLANS ARE TO BE SUBMITTED FOR REVIEW, APPROVAL, AND PERMIT BY THE APPROPRIATE BUILDING DEPARTMENT AND ANY OTHER REQUIRED GOVERNMENTAL AGENCIES PRIOR TO COMMENCEMENT OF ANY WORK. WRITTEN PERMISSIONS SHALL HAVE PRECEDENCE OVER SCALE. © COPYRIGHT BY GEOMETRIC DESIGN INC.

PROJECT TITLE: **DOCTORS HOSPITAL VALET PARKING AREA**
 UNIVERSITY DRIVE CORAL GABLES, FL
 5000 UNIVERSITY DRIVE CORAL GABLES, FL

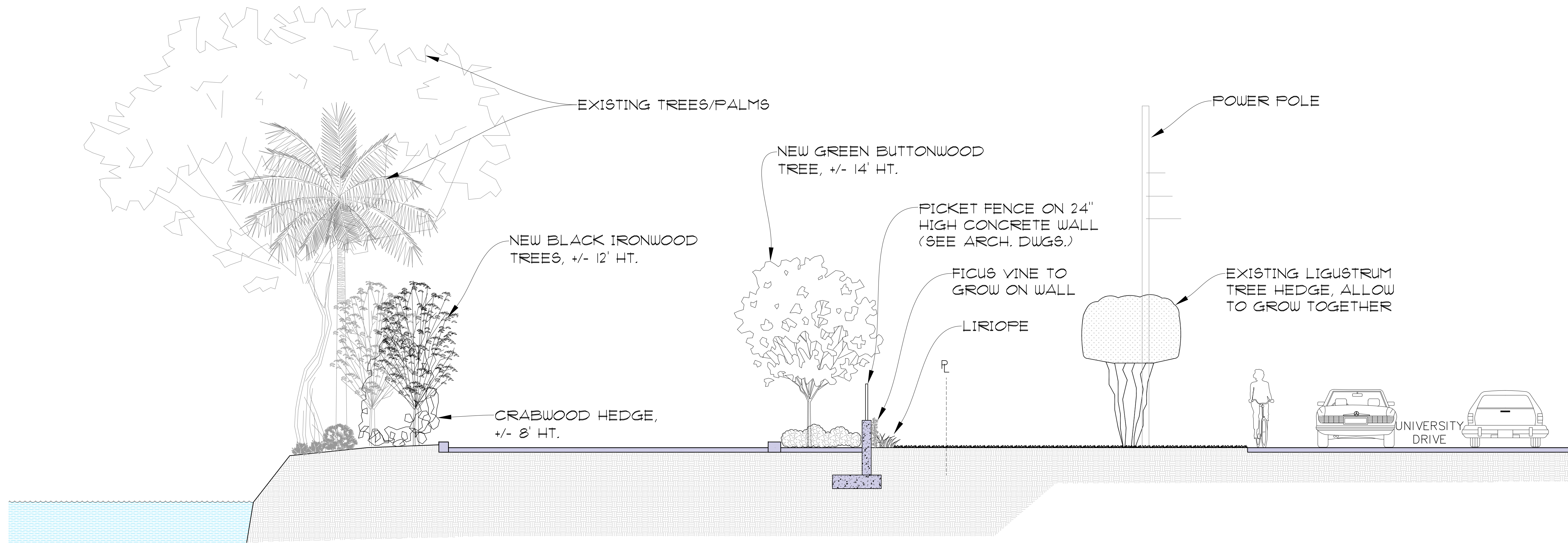
SHEET TITLE: **LANDSCAPE OVERALL KEY PLAN**

REVISION DATE(S):
 DATE: 5/5/2021
 L-4

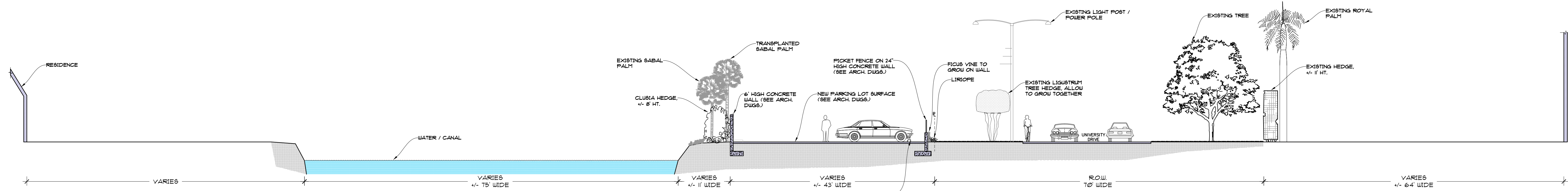
GEOMETRIC DESIGN INC.
 LANDSCAPE ARCHITECTURE
 ROBERT PARSLEY A.S.L.A.
 3325 CALANCA ST. CORAL GABLES, FL
 PHONE: 305-665-6668 FAX: 305-665-6625



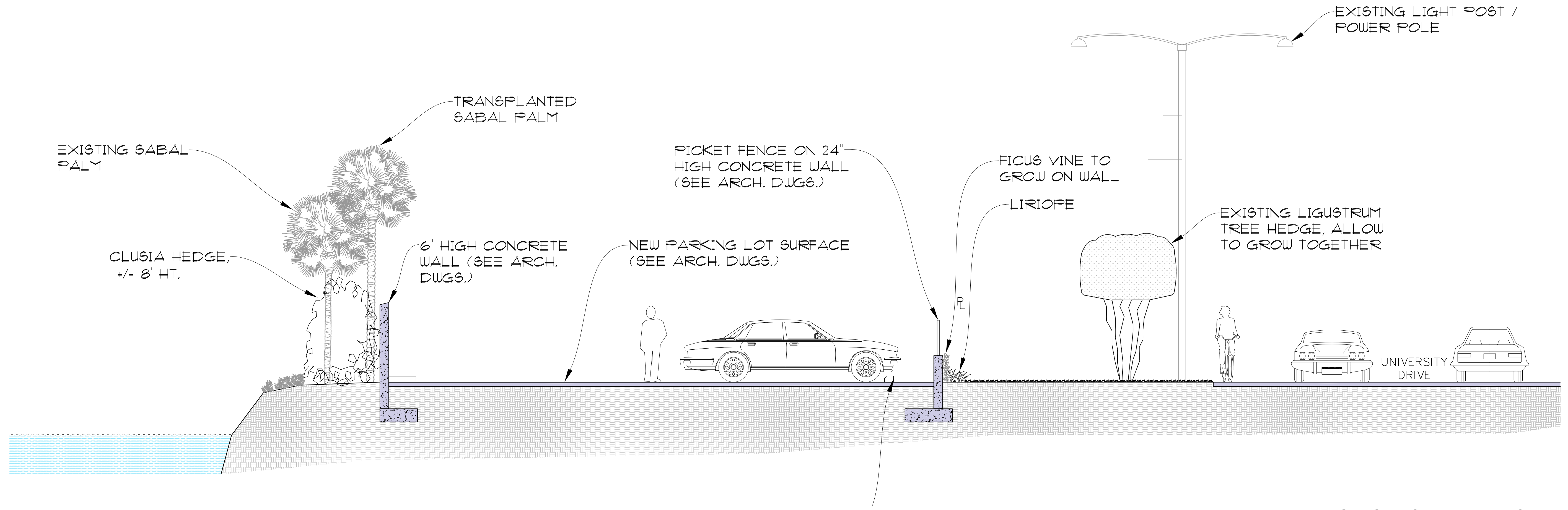
SECTION 1
5120 RESIDENCE
 SCALE: 3/32"=1'-0"



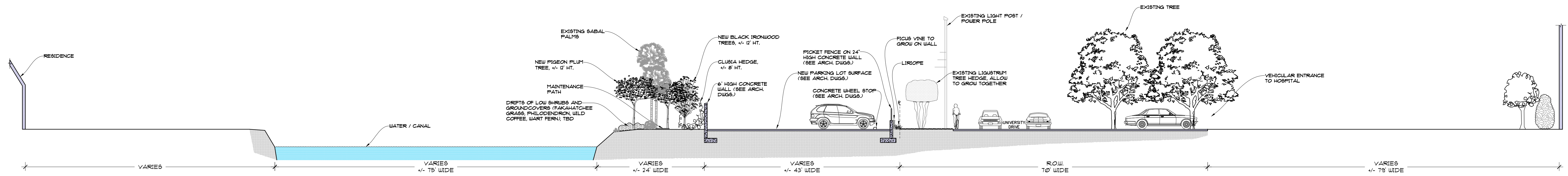
SECTION 1 - BLOWUP
5120 RESIDENCE
 SCALE: 1/4"=1'-0"



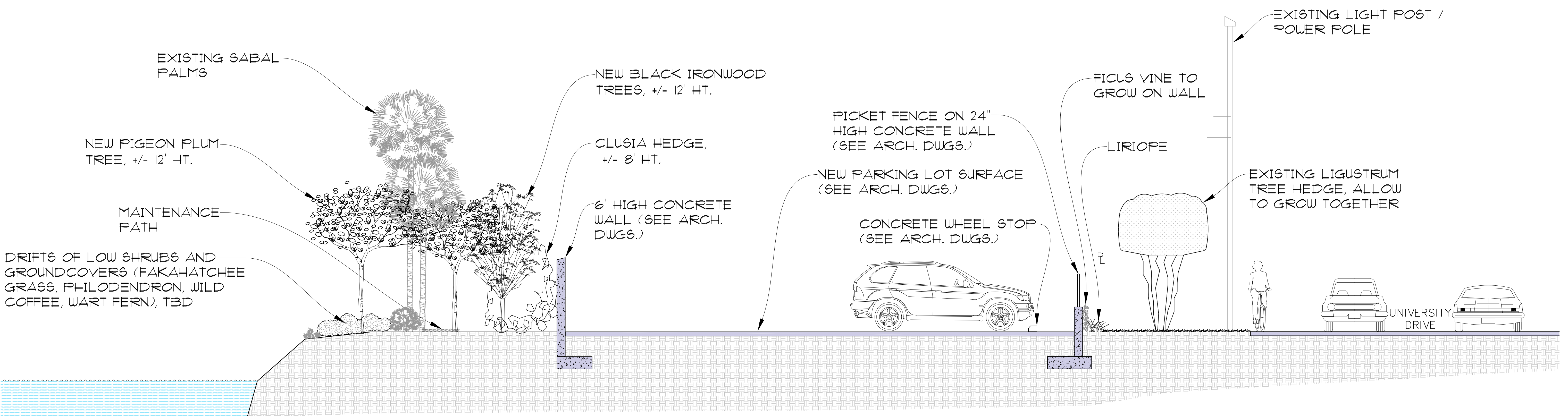
SECTION 2
5110 RESIDENCE
 SCALE: 3/32"=1'-0"



SECTION 2 - BLOWUP
5110 RESIDENCE
 SCALE: 1/4"=1'-0"



SECTION 3
5106 RESIDENCE
 SCALE: 3/32"=1'-0"



SECTION 3 - BLOWUP
5106 RESIDENCE
 SCALE: 1/4"=1'-0"

THE DRAWING IS TO BE USED FOR THE PROJECT AND SITE ONLY. THE DRAWINGS ARE THE PROPERTY OF THE LANDSCAPE ARCHITECT AND ARE NOT TO BE REPRODUCED, COPIED, OR ALTERED IN WHOLE OR IN PART. IT IS ONLY TO BE SPECIALLY IDENTIFIED HEREIN AND NOT TO BE USED IN ANY OTHER PROJECT. THESE PLANS ARE TO BE SUBMITTED FOR REVIEW, APPROVAL AND PERMIT BY THE APPROPRIATE BUILDING DEPARTMENT AND ANY OTHER REQUIRED GOVERNMENTAL AGENCIES PRIOR TO COMMENCEMENT OF ANY WORK. ALL DIMENSIONS SHALL HAVE PRECEDENCE OVER SCALE. © COPYRIGHT BY GEOMANTIC DESIGN, INC.

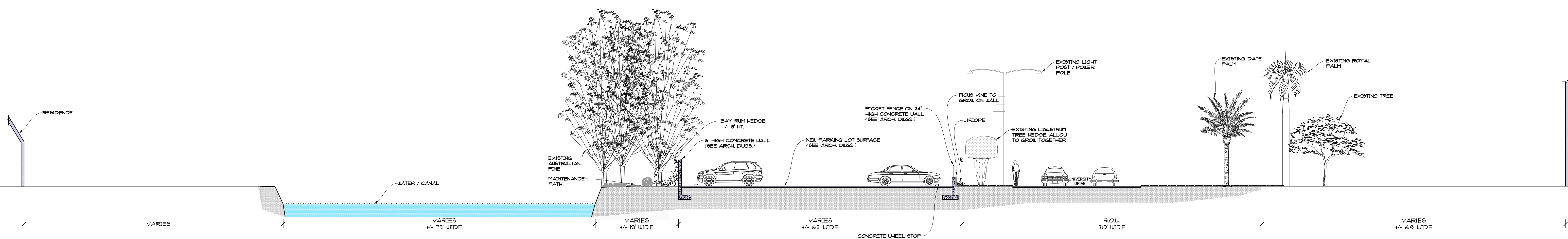
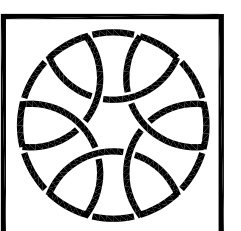
GEOMANTIC DESIGN, INC.
 LANDSCAPE ARCHITECTURE
 ROBERT PARSLEY A.S.L.A.
 2325 CALANDRE
 CORAL GABLES, FL
 PHONE: 305-665-6868 FAX: 305-665-6825

LANDSCAPE SECTION 3

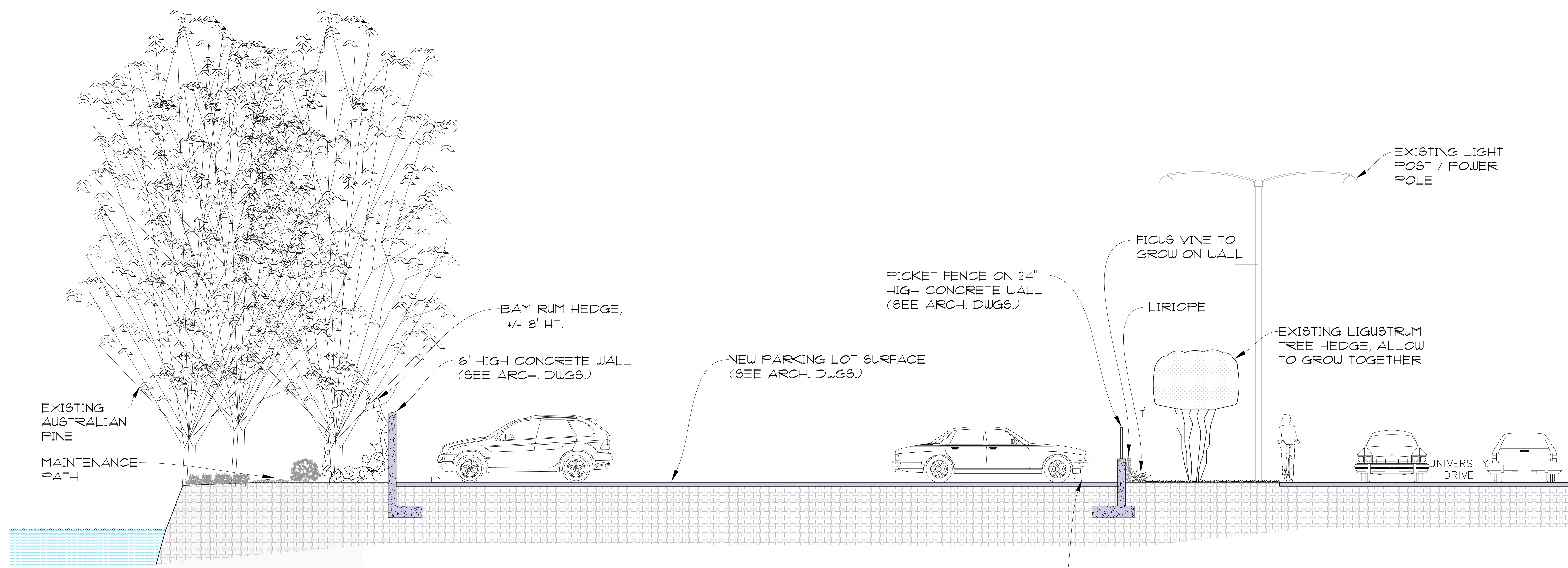
DOCTORS HOSPITAL VALET PARKING AREA
 UNIVERSITY DRIVE CORAL GABLES, FL
 5000

PROJECT TITLE
REVISION DATE(S)
DATE
5/5/2021

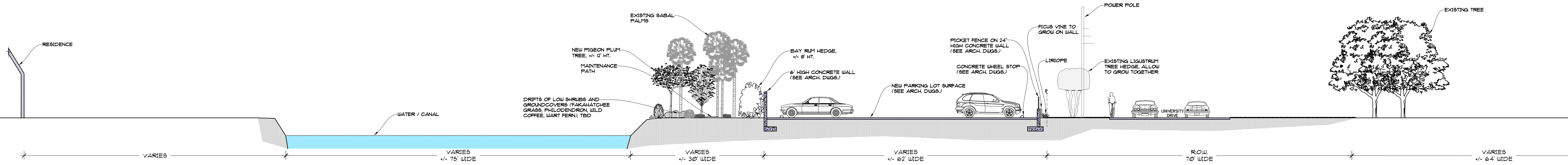
L-7



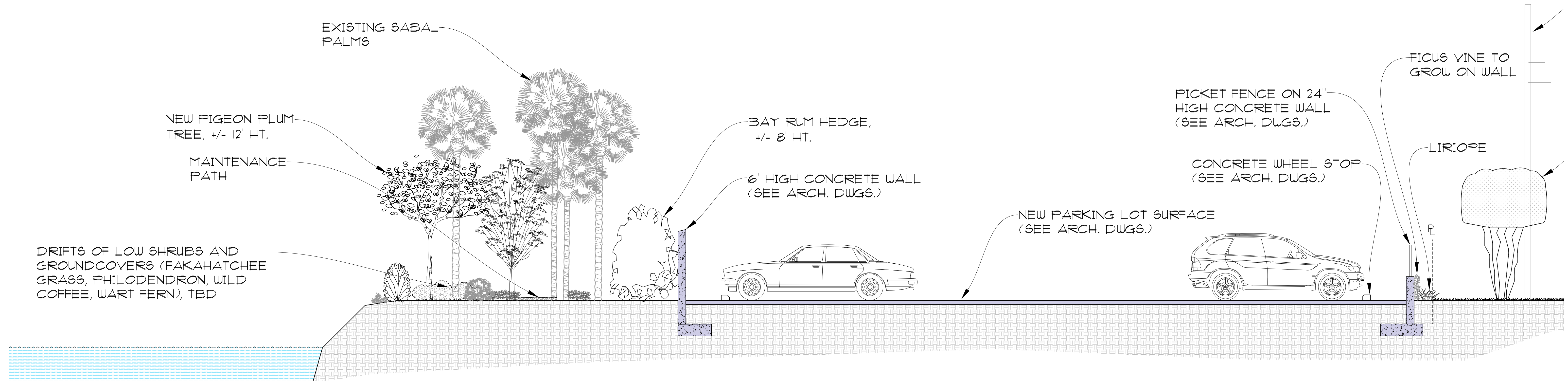
SECTION 4
5100 RESIDENCE
 SCALE: 3/32"=1'-0"



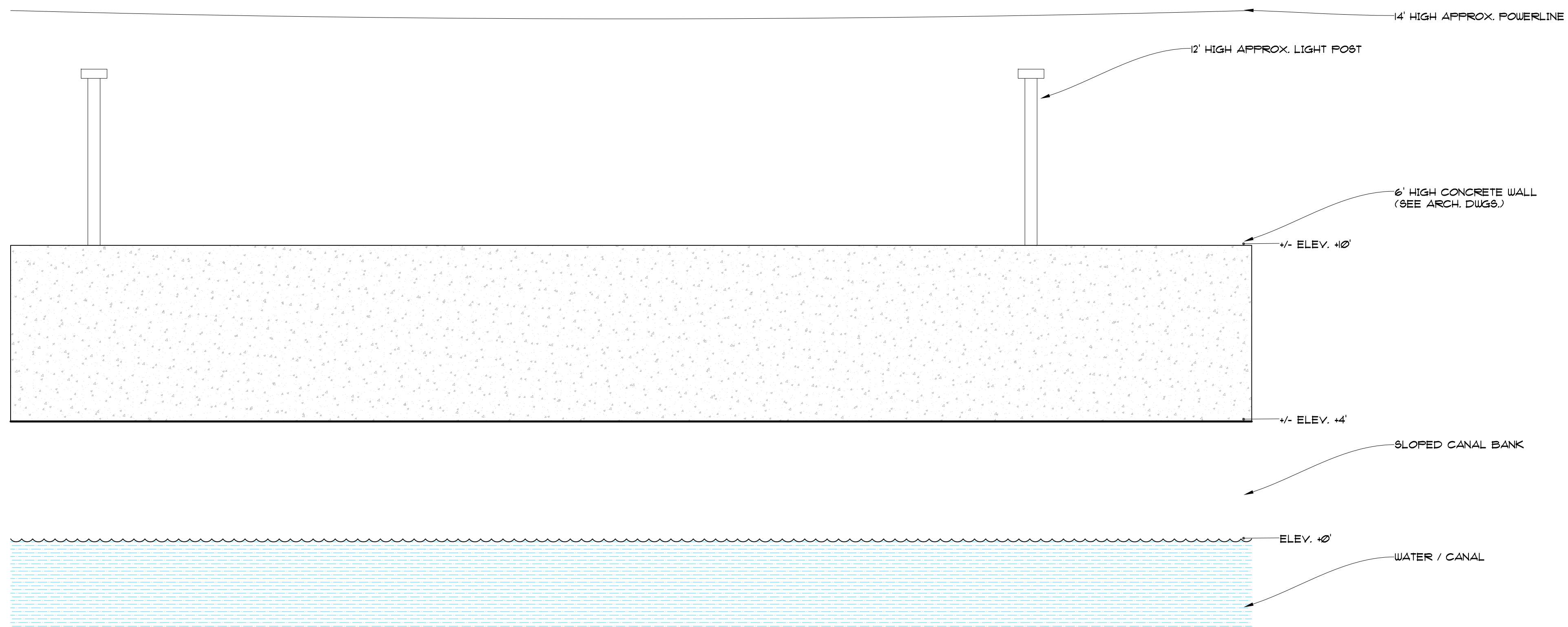
SECTION 4 - BLOWUP
5100 RESIDENCE
 SCALE: 1/4"=1'-0"



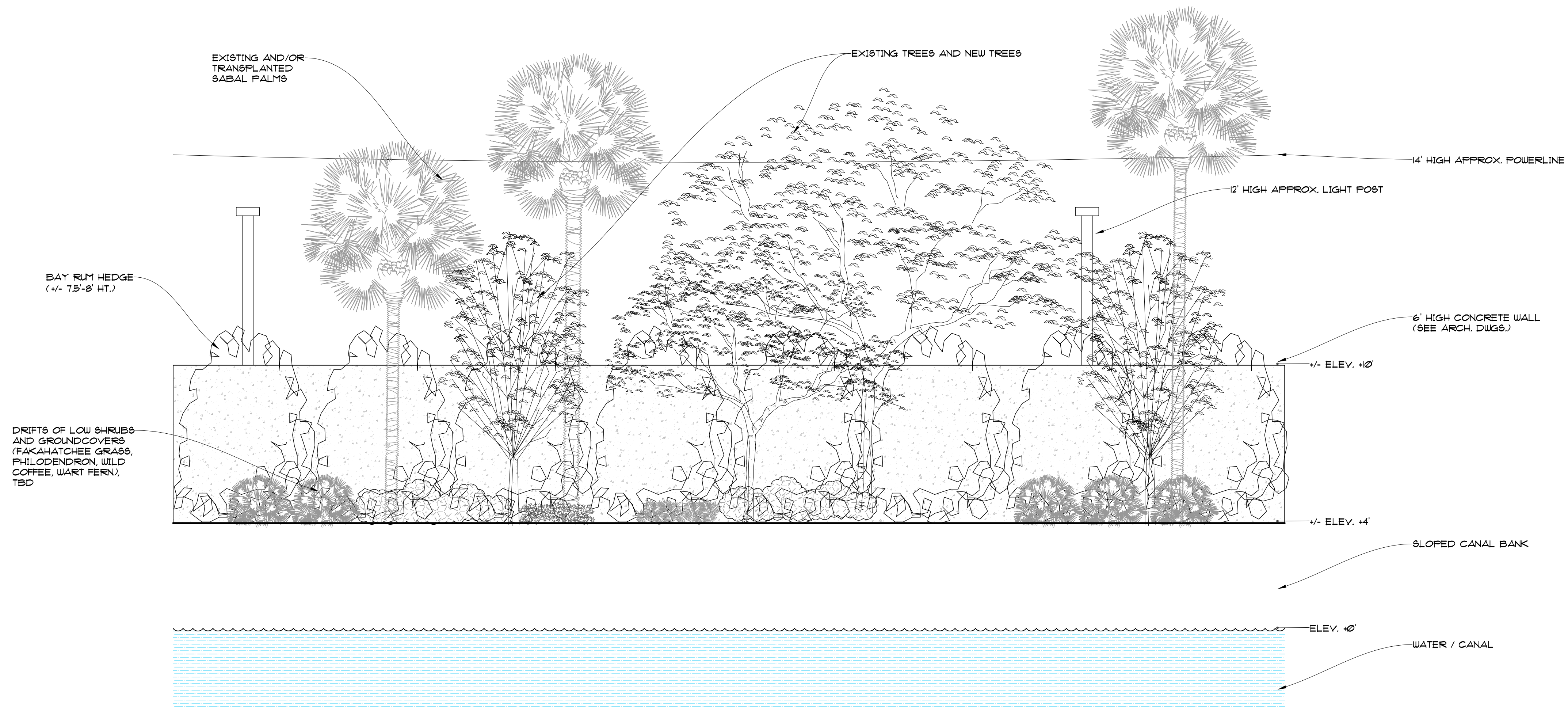
SECTION 5
5050 RESIDENCE
 SCALE: 3/32"=1'-0"



SECTION 5 - BLOWUP
5050 RESIDENCE
 SCALE: 1/4"=1'-0"



BARE ELEVATION
SCALE: 3/8"=1'-0"



CONCEPTUAL PLANTING ELEVATION
SCALE: 3/8"=1'-0"

THIS DRAWING IS TO BE USED FOR THE PROJECT AND SITE ONLY. THE DRAWING IS THE PROPERTY OF THE LANDSCAPE ARCHITECT AND IS NOT TO BE REPRODUCED, COPIED, OR ALTERED IN WHOLE OR IN PART. IT IS ONLY TO BE SPECIFICALLY IDENTIFIED HEREIN AND NOT TO BE USED ON ANY OTHER PROJECT. THESE PLANS ARE TO BE SUBMITTED FOR REVIEW, APPROVAL AND PERMIT BY THE APPROPRIATE BUILDING DEPARTMENT AND ANY OTHER REQUIRED GOVERNMENTAL AGENCIES PRIOR TO COMMENCING OF ANY WORK. WRITTEN DIMENSIONS SHALL TAKE PRECEDENCE OVER SCALE. © COPYRIGHT BY GEOMANTIC DESIGN, INC.

PROJECT TITLE

REVISION DATE(S)

DATE:

5/5/2021

DOCTORS HOSPITAL
VALET PARKING AREA
UNIVERSITY DRIVE CORAL GABLES, FL
5000

SHEET TITLE

LANDSCAPE
CONCEPTUAL PLANTING ELEVATIONS

GEOMANTIC
DESIGNS, INC.
LANDSCAPE ARCHITECTURE

ROBERT PARSLEY A.S.L.A.
2325 GALLANTRY CORAL GABLES, FL
PHONE: 305-465-6868 FAX: 305-465-6426



Doctors Hospital Valet Parking Lot
Conceptual Rendering
15 to 25 Year Growth
Canal View - Middle

NELSON



Doctors Hospital Valet Parking Lot
Conceptual Rendering
15 to 25 Year Growth
Canal View - Northeast

NELSON



Doctors Hospital Valet Parking Lot
Conceptual Rendering
15 to 25 Year Growth
Canal View - Southwest

NELSON



Doctors Hospital Valet Parking Lot
Conceptual Rendering
15 to 25 Year Growth
Plan View



Doctors Hospital Valet Parking Lot
Conceptual Rendering
15 to 25 Year Growth
Aerial View - Southwest





Doctors Hospital Valet Parking Lot
Conceptual Rendering
15 to 25 Year Growth
Street View - Southwest



Doctors Hospital Valet Parking Lot
Conceptual Rendering
15 to 25 Year Growth
Street View - Northeast